

LBSS5250Y3T1G

S-LBSS5250Y3T1G

Midium Power PNP Transistors

1. FEATURES

- Low saturation voltage, typically
- High speed switching
- We declare that the material of product compliance with RoHS requirements and Halogen Free.
- S- prefix for automotive and other applications requiring unique site and control change requirements; AEC-Q101 qualified and PPAP capable.

2. APPLICATIONS

- Driver

3. DEVICE MARKING AND ORDERING INFORMATION

| Device | Marking | Shipping |
|---------------|---------|----------------|
| LBSS5250Y3T1G | H | 1000/Tape&Reel |

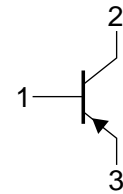
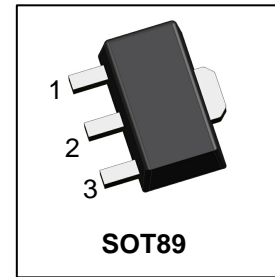
4. MAXIMUM RATINGS(Ta = 25°C)

| Parameter | Symbol | Limits | Unit |
|---------------------------|--------|--------|------|
| Collector–Emitter Voltage | VCEO | -50 | V |
| Collector–Base Voltage | VCBO | -50 | V |
| Emitter–Base Voltage | VEBO | -6 | V |
| Collector Current | IC | -2 | A |
| Collector Current(Pulse) | ICP | -4 | A |

5. THERMAL CHARACTERISTICS

| Parameter | Symbol | Limits | Unit |
|---|---------|------------|-------------|
| Total Device Dissipation, FR-4 Board (Note 1) @ TA = 25°C Derate above 25°C | PD | 550 4.4 | mW mW/°C |
| Thermal Resistance, Junction–to–Ambient | RθJA | 225 | °C/W |
| Junction and Storage temperature | TJ,Tstg | -55~+150 | °C |

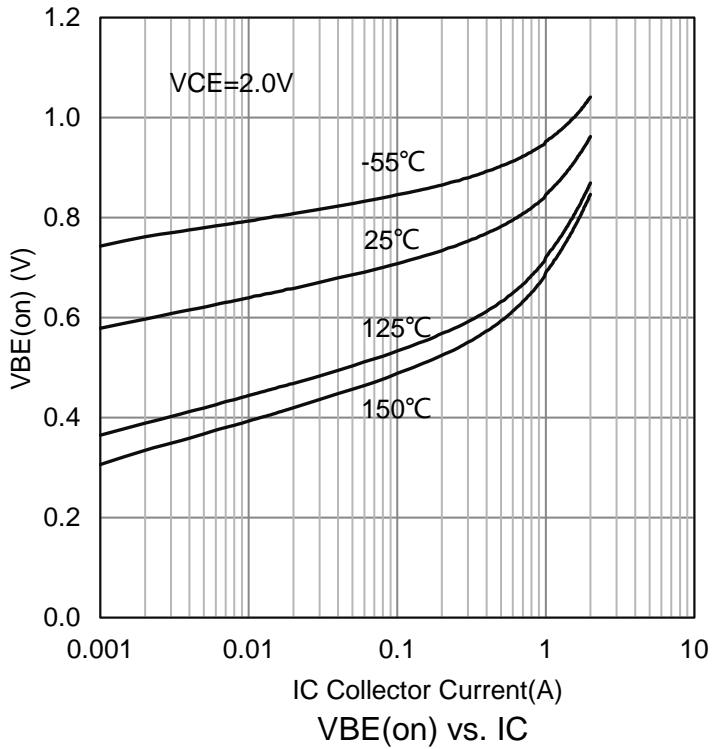
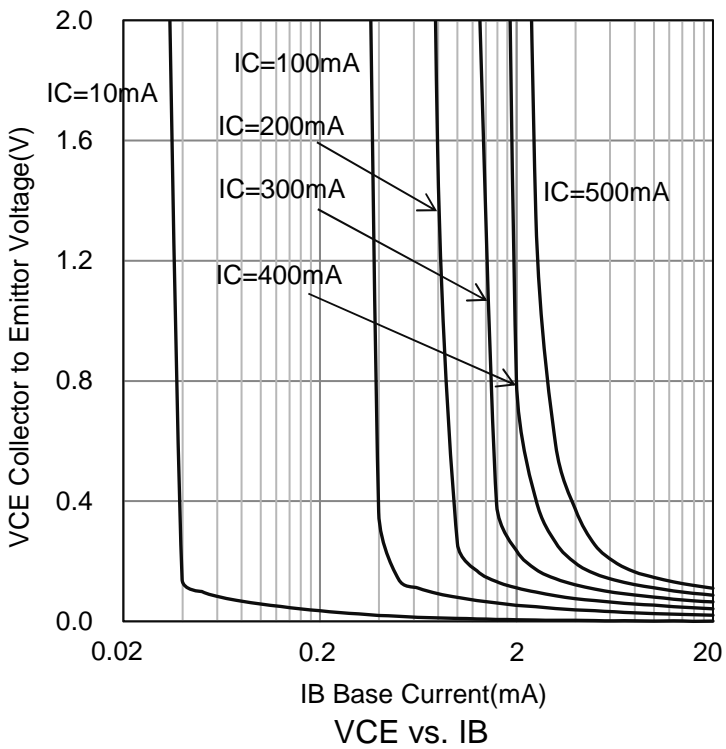
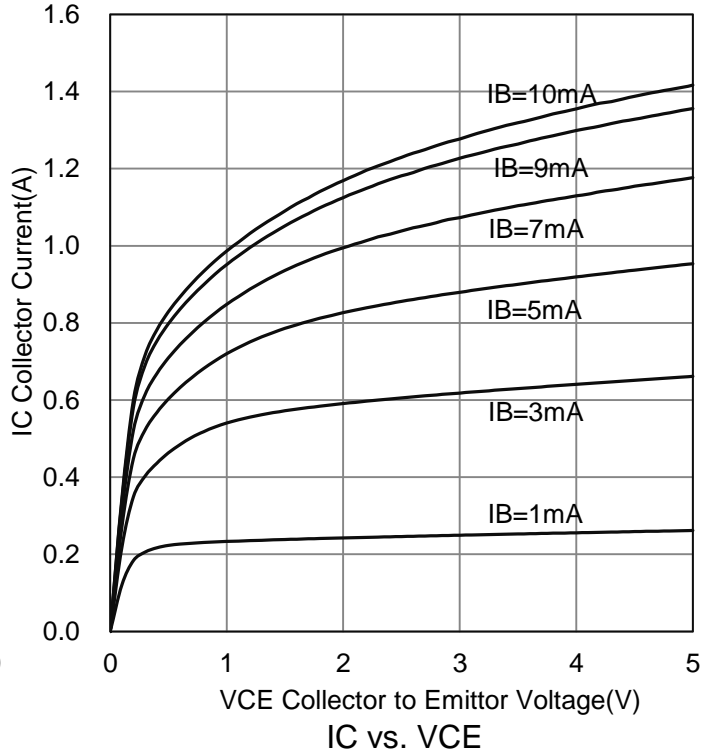
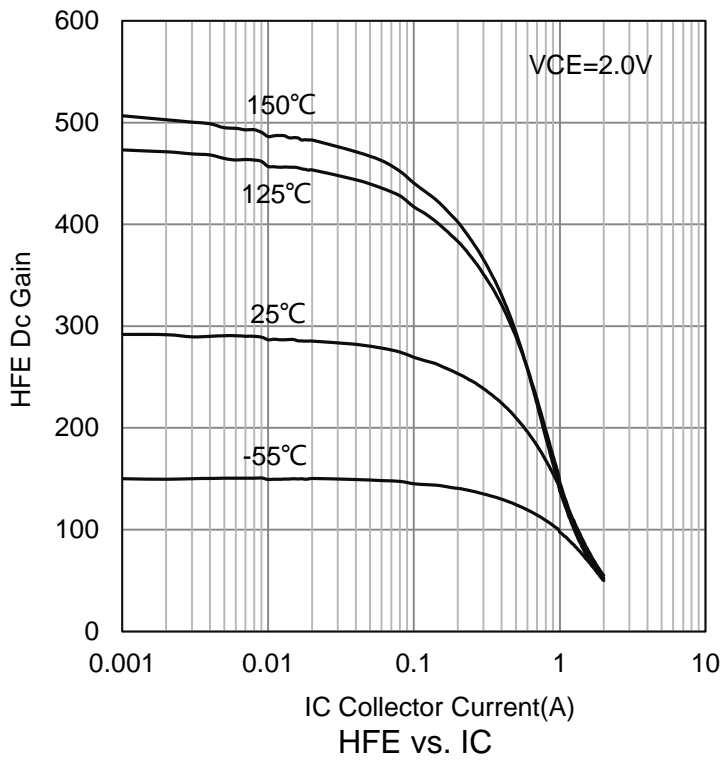
1.PCB Size:30.0mm×25.0mm×1.6mm,FR-4 Board;



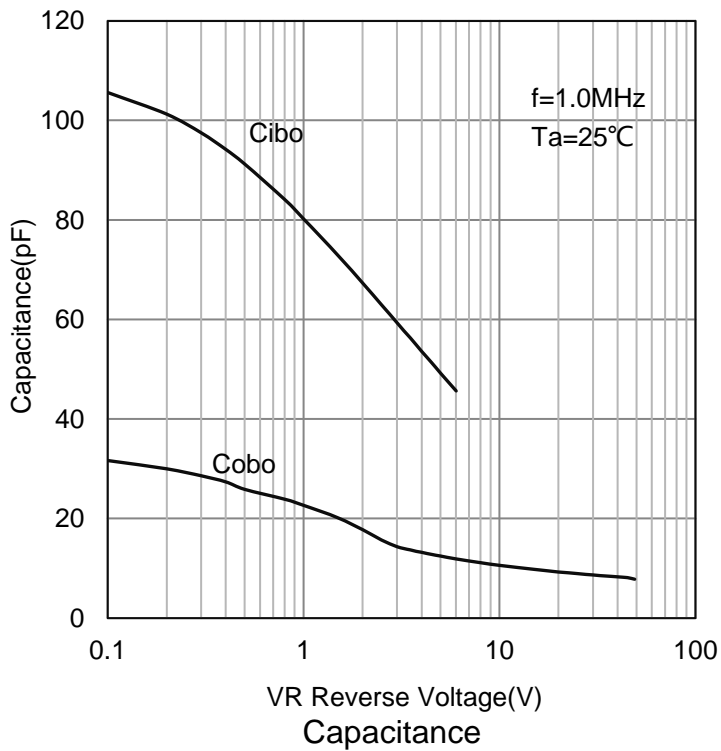
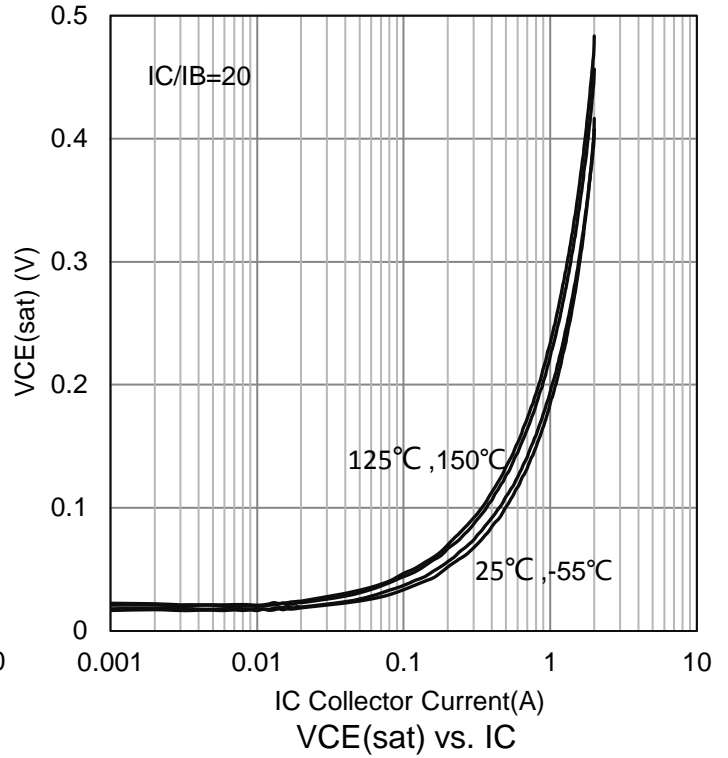
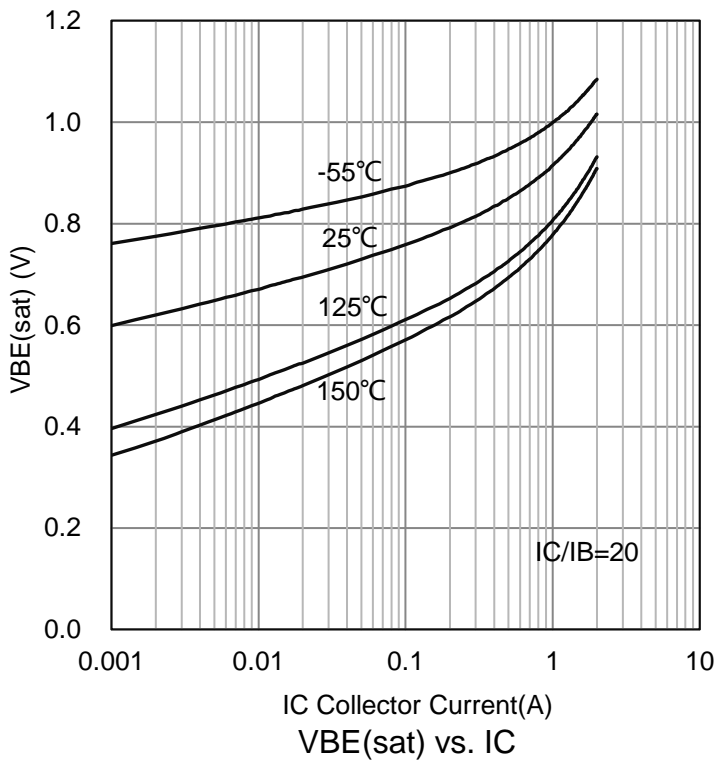
6. ELECTRICAL CHARACTERISTICS (Ta= 25°C)

| Characteristic | Symbol | Min. | Typ. | Max. | Unit |
|--|----------|------|------|------|------|
| Collector-emitter breakdown voltage (IC = -1mA) | BVCEO | -50 | - | - | V |
| Collector-base breakdown voltage (IC = -100μA) | BVCBO | -50 | - | - | V |
| Emitter-base breakdown voltage (IE = -100μA) | BVEBO | -6 | - | - | V |
| Collector Cutoff Current (VCB = -50V, IE = 0) | ICBO | - | - | -1 | μA |
| Emitter Cut-off Current (VEB = -4V, IC = 0) | IEBO | - | - | -1 | μA |
| DC Current Gain (VCE = -2V, IC = -50mA) | HFE | 180 | - | 450 | |
| Collector–Emitter Saturation Voltage (IC = -700mA, IB = -35mA) | VCE(sat) | - | -200 | -400 | mV |
| Transition Frequency(Note 1) (VCE = -10V, IE = 300mA, f=100MHz) | fT | - | 320 | - | MHz |
| Collector Output Capacitance (VCB = -10V, IE = 0A, f=1MHz) | Cob | - | 22 | - | pF |

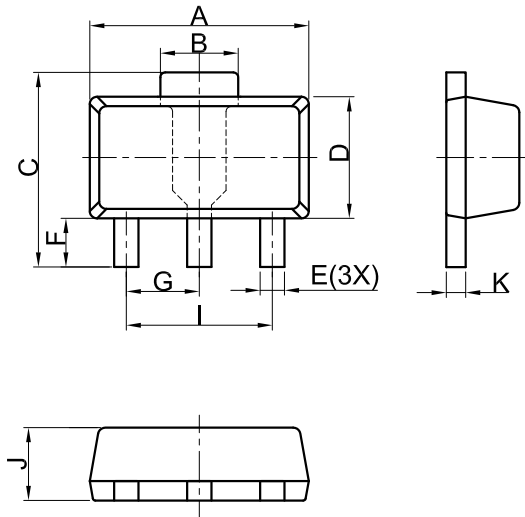
7. ELECTRICAL CHARACTERISTICS CURVES



7.ELECTRICAL CHARACTERISTICS CURVES(Con.)



8.OUTLINE AND DIMENSIONS

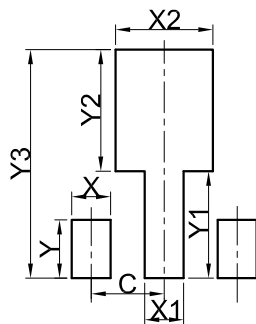


| SOT89 | | | |
|----------------------|----------|------|------|
| DIM | MIN | NOR | MAX |
| A | 4.30 | 4.50 | 4.70 |
| B | 1.40 | 1.60 | 1.80 |
| C | 3.90 | 4.00 | 4.25 |
| D | 2.30 | 2.50 | 2.70 |
| E | 0.40 | 0.50 | 0.58 |
| F | 0.90 | 1.00 | 1.20 |
| G | 1.50 BSC | | |
| I | 3.00 BSC | | |
| J | 1.40 | 1.50 | 1.60 |
| K | 0.34 | 0.40 | 0.50 |
| All Dimensions in mm | | | |

GENERAL NOTES

1. Top package surface finish Ra0.4±0.2um
2. Bottom package surface finish Ra0.7±0.2um
3. Side package surface finish Ra0.4±0.2um
4. Protrusion or Gate Burrs shall not exceed 0.10mm per side.

9.SOLDERING FOOTPRINT



| SOT89 | |
|-------|------|
| DIM | (mm) |
| X | 0.80 |
| Y | 1.20 |
| X1 | 0.80 |
| Y1 | 2.20 |
| X2 | 2.00 |
| Y2 | 2.50 |
| C | 1.50 |
| Y3 | 4.70 |

DISCLAIMER

- Before you use our Products, you are requested to carefully read this document and fully understand its contents. LRC shall not be in any way responsible or liable for failure, malfunction or accident arising from the use of any LRC's Products against warning, caution or note contained in this document.
- All information contained in this document is current as of the issuing date and subject to change without any prior notice. Before purchasing or using LRC's Products, please confirm the latest information with a LRC sales representative.

单击下面可查看定价，库存，交付和生命周期等信息

[>>LRC\(乐山无线电\)](#)