

# LBA277T1G

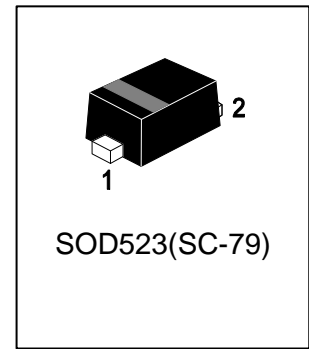
## Band Switching Diode

### 1. FEATURES

- We declare that the material of product compliance with RoHS requirements and Halogen Free.
- Small surface mounting type.
- High reliability.

### 2. APPLICATIONS

- High frequency switching



### 3. DEVICE MARKING AND ORDERING INFORMATION

Device	Marking	Shipping
LBA277T1G	1	3000/Tape&Reel
LBA277T5G	1	8000/Tape&Reel

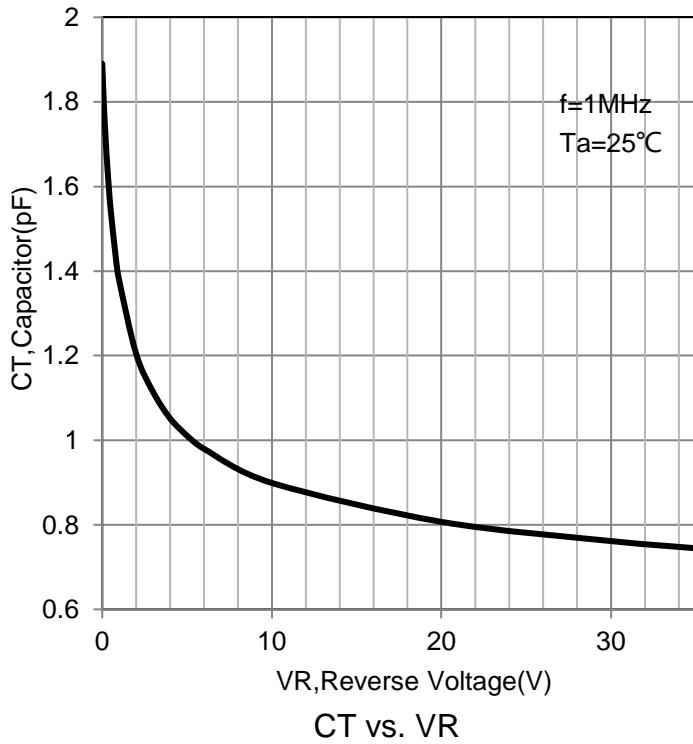
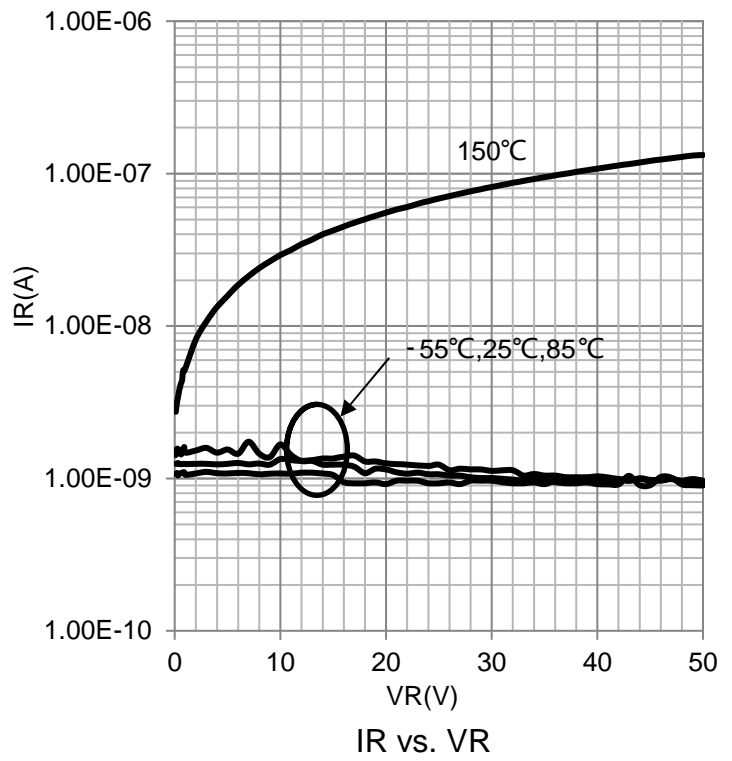
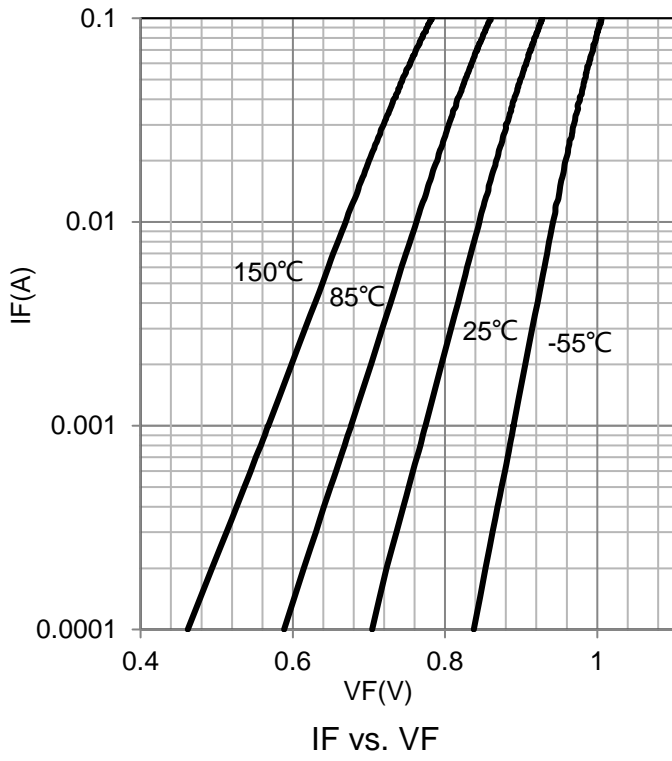
### 4. MAXIMUM RATINGS(Ta = 25°C)

Parameter	Symbol	Limits	Unit
DC reverse voltage	VR	35	V
DC forward current	IF	100	mA
Junction temperature	TJ	125	°C
Storage temperature	Tstg	-55~+125	°C

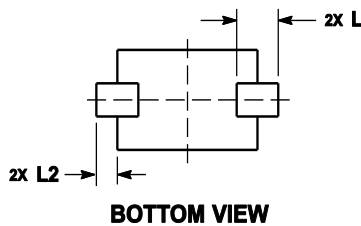
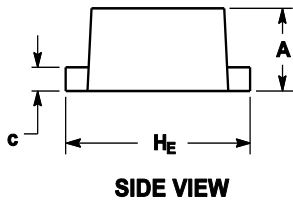
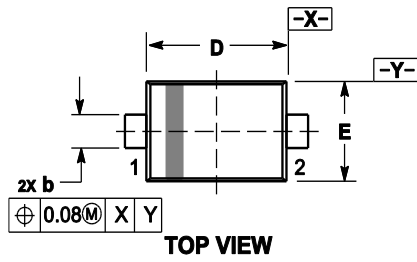
### 5. ELECTRICAL CHARACTERISTICS (Ta= 25°C)

CHARACTERISTICS	Symbol	Min	Typ	Max	Unit
Forward voltage (IF=10mA)	VF	-	-	1	V
Reverse current (VR=25V)	IR	-	-	50	nA
Capacitance between terminals (VR=6V,f=1MHz)	CT	-	-	1.2	pF
Forward operating resistance (IF=2mA,f=100MHz)	rF	-	-	0.9	Ω

**6.ELECTRICAL CHARACTERISTICS CURVES**



## 7. OUTLINE AND DIMENSIONS

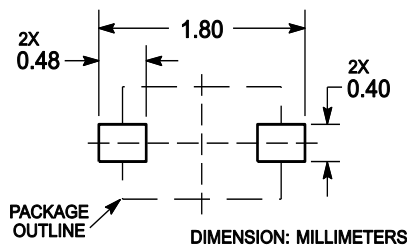


Notes:

1. DIMENSIONING AND TOLERANCING PER ANSI Y14.5M, 1982.
2. CONTROLLING DIMENSION: MILLIMETERS.
3. MAXIMUM LEAD THICKNESS INCLUDES LEAD FINISH. MINIMUM LEAD THICKNESS IS THE MINIMUM THICKNESS OF BASE MATERIAL.
4. DIMENSIONS D AND E DO NOT INCLUDE MOLD FLASH, PROTRUSIONS OR GATE BURRS.

DIM	MILLIMETERS			INCHES		
	MIN	NOM	MAX	MIN	NOM	MAX
A	0.50	0.60	0.70	0.020	0.024	0.028
b	0.25	0.30	0.35	0.010	0.012	0.014
c	0.07	0.14	0.20	0.003	0.006	0.008
D	1.10	1.20	1.30	0.043	0.047	0.051
E	0.70	0.80	0.90	0.028	0.031	0.035
H <sub>E</sub>	1.50	1.60	1.70	0.059	0.063	0.067
L	0.30 REF			0.012 REF		
L <sub>2</sub>	0.15	0.20	0.25	0.006	0.008	0.010

## 8. SOLDERING FOOTPRINT



单击下面可查看定价，库存，交付和生命周期等信息

[>>LRC\(乐山无线电\)](#)