

# LTVS16D18H7.0T5G

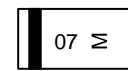
**LTVS16D18H7.0T5G**

## Features

- 7V uni-directional ESD diode
- Ultra low leakage: nA level
- Low clamping voltage
- Complies with IEC 61000-4-2 standards:
  - Air discharge:  $\pm 15\text{kV}$
  - Contact discharge:  $\pm 8\text{kV}$
- RoHS Compliant



### MARKING DIAGRAM



**cathode**

07 = Specific Device Code  
M = Month Code

## Ordering information

Device	Marking	Shipping
LTVS16D18H7.0T5G	07	8000/Tape&Reel

## Absolute Maximum Ratings ( $T_A=25^\circ\text{C}$ unless otherwise specified)

Parameter	Symbol	Value	Unit
Peak Pulse Power (8/20 $\mu\text{s}$ )	Ppk	1800	W
Peak Pulse Current (8/20 $\mu\text{s}$ )	I <sub>PP</sub>	100	A
Operating Temperature Range	T <sub>J</sub>	-55 to +125	$^\circ\text{C}$
Storage Temperature Range	T <sub>stg</sub>	-55 to +150	$^\circ\text{C}$

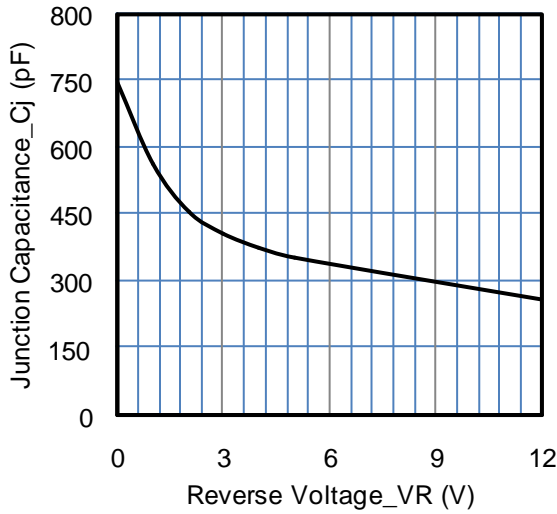
## Electrical Characteristics ( $T_A=25^\circ\text{C}$ unless otherwise specified)

Parameter	Symbol	Min	Typ	Max	Unit	Test Condition
Reverse Working Voltage	V <sub>RWM</sub>			7.0	V	
Breakdown Voltage	V <sub>BR</sub>	7.5			V	I <sub>T</sub> = 1mA
Reverse Leakage Current	I <sub>R</sub>			2	$\mu\text{A}$	V <sub>RWM</sub> = 7.0V
Clamping Voltage	V <sub>C</sub>			12	V	I <sub>PP</sub> = 10A (8 x 20 $\mu\text{s}$ pulse)
Clamping Voltage	V <sub>C</sub>			15	V	I <sub>PP</sub> = 100A (8 x 20 $\mu\text{s}$ pulse)
Junction Capacitance	C <sub>J</sub>			750	pF	V <sub>R</sub> = 0V, f = 1MHz

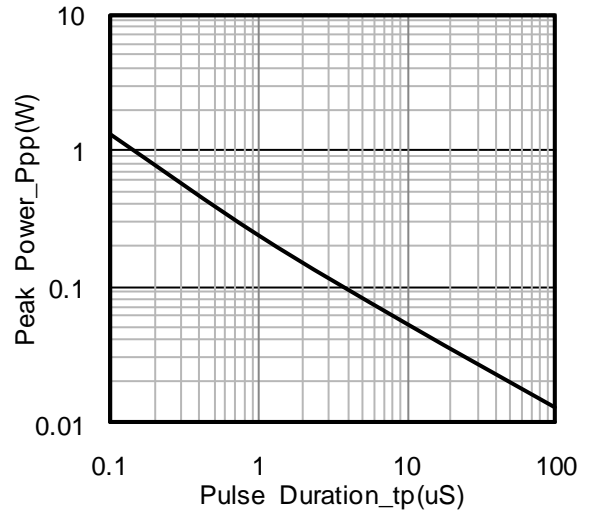
**Note:** Electrical parameters are only for die, performance may alter after assembly.

# LTVS16D18H7.0T5G

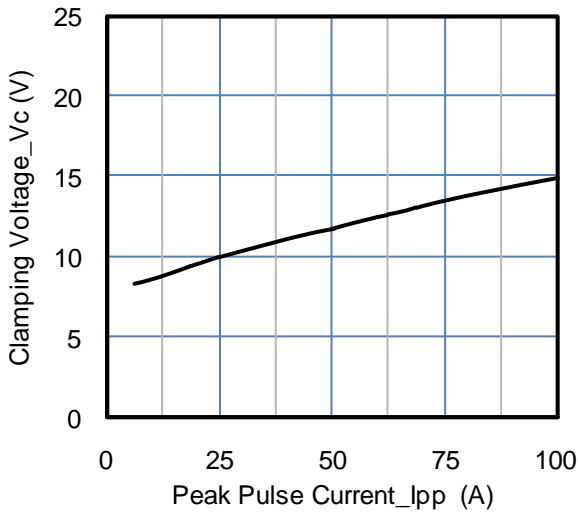
## Typical Performance Characteristics ( $T_A=25^\circ\text{C}$ unless otherwise Specified)



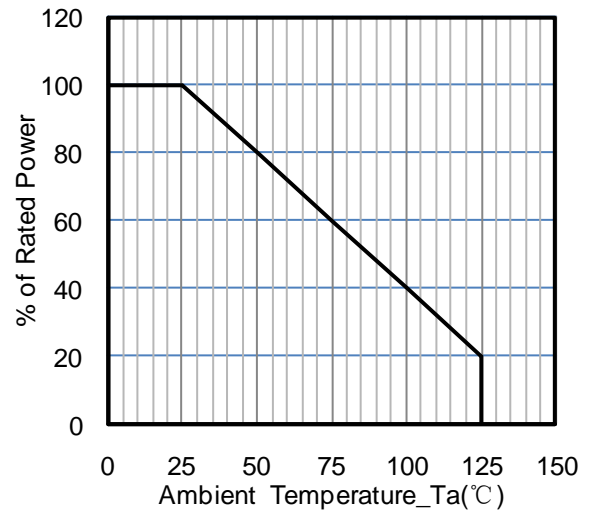
**Fig1. Junction Capacitance vs. Reverse Voltage**



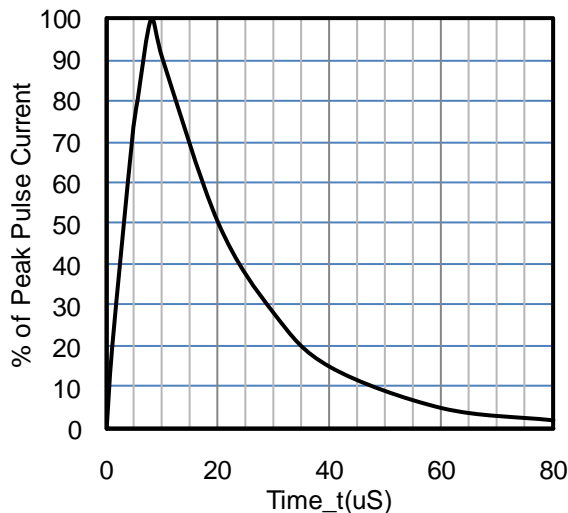
**Fig2. Peak Pulse Power vs. Pulse Time**



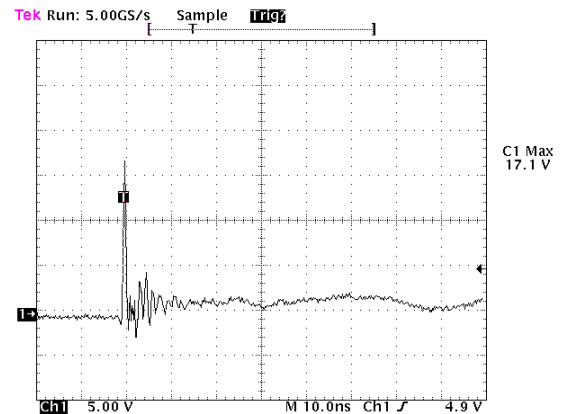
**Fig3. Clamping Voltage vs. Peak Pulse Current**



**Fig4. Power Derating Curve**



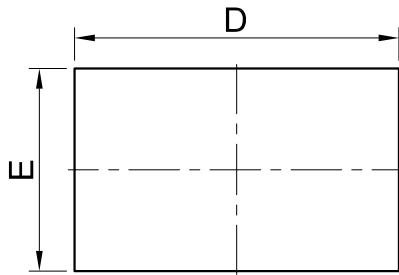
**Fig 5. 8 X 20uS Pulse Waveform**



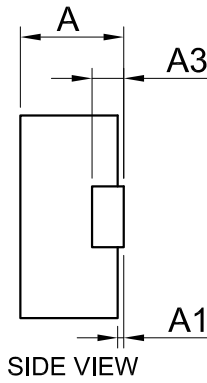
**Fig 6. ESD Clamping Voltage  
8 kV Contact per IEC61000-4-2**

# LTVS16D18H7.0T5G

## OUTLINE AND DIMENSIONS

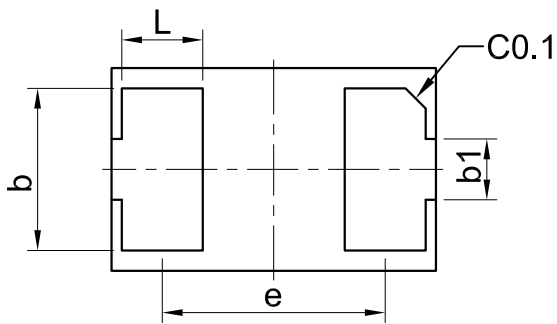


TOP VIEW



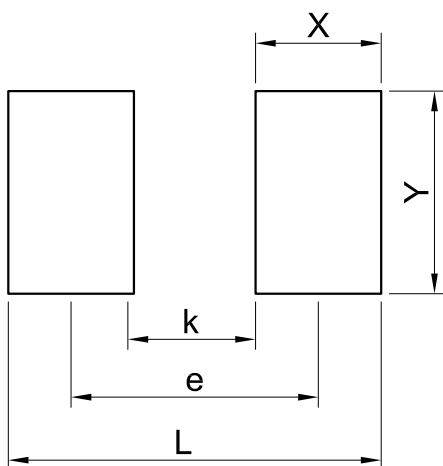
SIDE VIEW

DFN1610			
DIM	MIN	NOR	MAX
A	0.46	0.51	0.56
A1	0.01	0.03	0.05
b	0.75	0.80	0.85
b1	0.25	0.30	0.35
D	1.55	1.60	1.65
E	0.95	1.00	1.05
e	1.10BSC		
L	0.35	0.40	0.45
A3	0.127REF.		
All Dimensions in mm			



BOTTOM VIEW

## SOLDERING FOOTPRINT



DFN1610	
DIM	(mm)
X	0.62
Y	1.00
L	1.84
e	1.22
K	0.60

单击下面可查看定价，库存，交付和生命周期等信息

[>>LRC\(乐山无线电\)](#)

[>>点击查看相关商品](#)