

SS15U60

Schottky Barrier Rectifiers

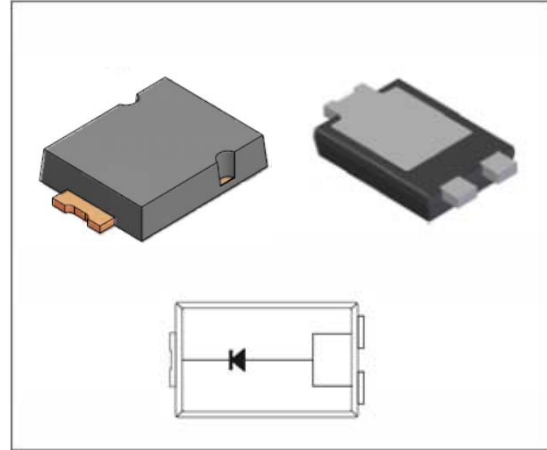
Reverse Voltage 60V Forward Current 15A

FEATURES

- * Plastic package has Underwriters Laboratory Flammability Classification 94V-0
- * Low power loss,high efficiency
- * For use in low voltage high frequency inverters, free wheeling,and polarity protection applications
- * Guardring for over voltage protection
- * High temperature soldering guaranteed: 260°C/10 seconds at terminals

Mechanical Data

Case: JEDEC TO-277A,
molded plastic over SKY body
Terminals: Plated leads, solderable per MIL-STD-750, Method 2026
Mounting Position: Any
Weight: 0.108 g
Handling precaution:None



We declare that the material of product is Halogen free (green epoxy compound)

1.Electrical Characteristic

Maximum & Thermal Characteristics Ratings at 25°C ambient temperature unless otherwise specified.

Parameter Symbol	symbol	SS15U60	Unit
device marking code		SS15U60	
Maximum repetitive peak reverse voltage	V_{RRM}	60	V
Maximum RMS voltage	V_{RMS}	42	V
Maximum DC blocking voltage	V_{DC}	60	V
Maximum average forward rectified current at $T_c = 110^\circ\text{C}$	$I_{F(AV)}$	15.0	A
Peak forward surge current 8.3ms single half sine-wave superimposed on rated load (JEDEC Method)	I_{FSM}	300	A
Typical thermal resistance (Note 1)	R θ JC	8	°C/W
	R θ JL	15	
	R θ JA	31	
Typical thermal resistance (Note 3)	R θ JA	135	°C/W
Operating junction temperature range	T_J	-55 to +150	°C
Storage temperature range	T_{STG}	-55 to +175	°C

Electrical Characteristics Ratings at 25°C ambient temperature unless otherwise specified.

Parameter Symbol	symbol	SS15U60	Unit
Maximum instantaneous forward voltage at 15A at 25°C	V_F	0.50	V
Maximum DC reverse current $T_A = 25^\circ\text{C}$ at rated DC blocking voltage $T_A = 100^\circ\text{C}$ (note2) at rated DC blocking voltage $T_A = 125^\circ\text{C}$ (note2)	IR	0.50	mA
		15.0	
		80	
Typical junction capacitance at 4.0V, 1MHz	CJ	500	PF

NOTES:

1. Polyimide PCB, 2oz. Copper. Cathode pad dimensions 18.8mm x 14.4mm. Anode pad dimensions 5.6mm x 14.4mm.
- 2.Short duration pulse test used to minimize self-heating sffect .
- 3.FR-4 PCB, 2oz.Copper.

SS15U60

2. Ratings and Characteristic Curves (TA = 25°C unless otherwise noted)

Fig. 1 - Forward Current Derating Curve

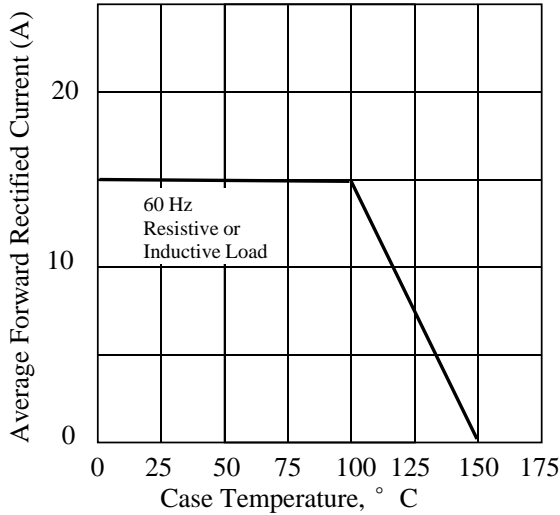


Fig. 2 - Maximum Non-repetitive Peak Forward Surge Current

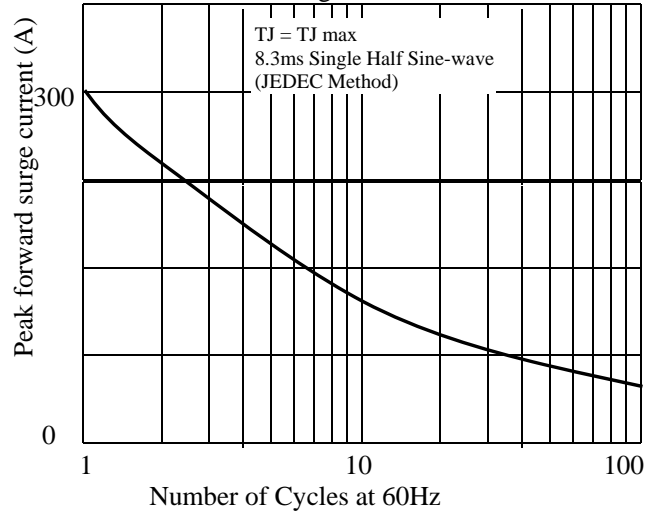


Fig. 3. - Typical Instantaneous Forward Characteristics

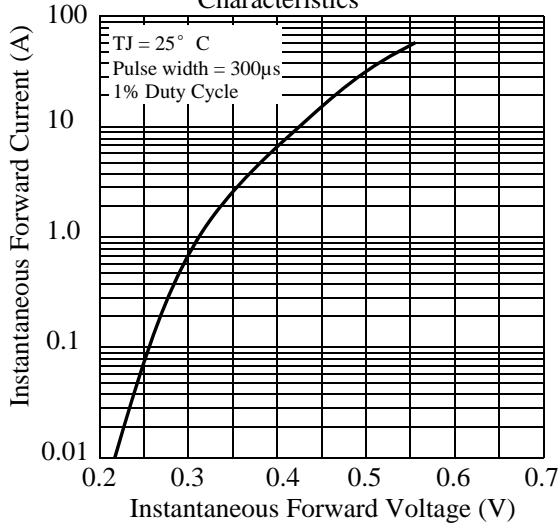


Fig 4. - Typical Reverse Characteristics

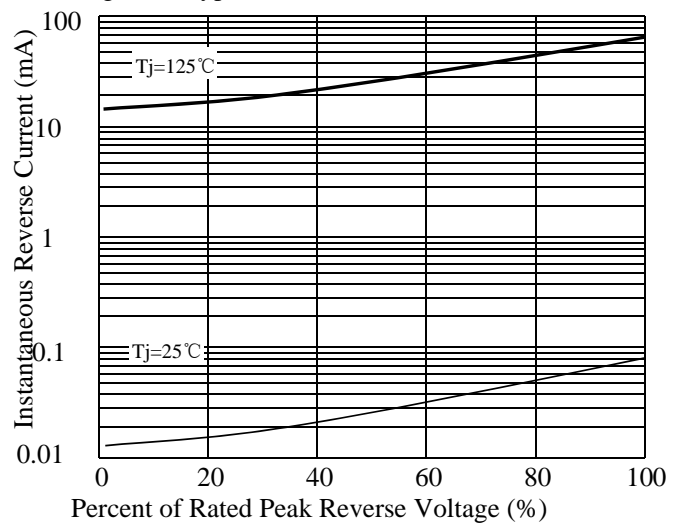


Fig 5. - typical transient thermal impedance(Note 3)

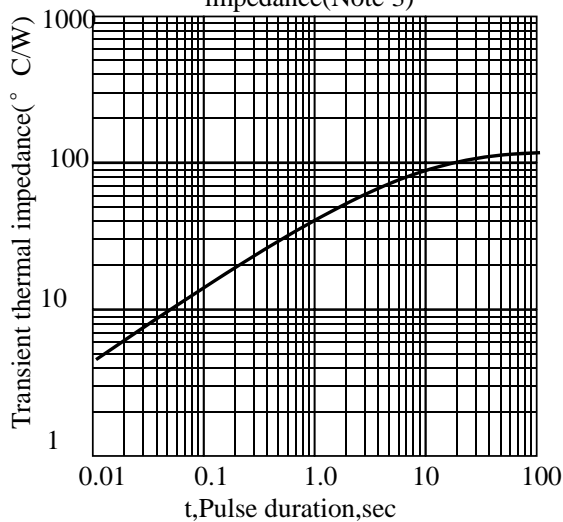
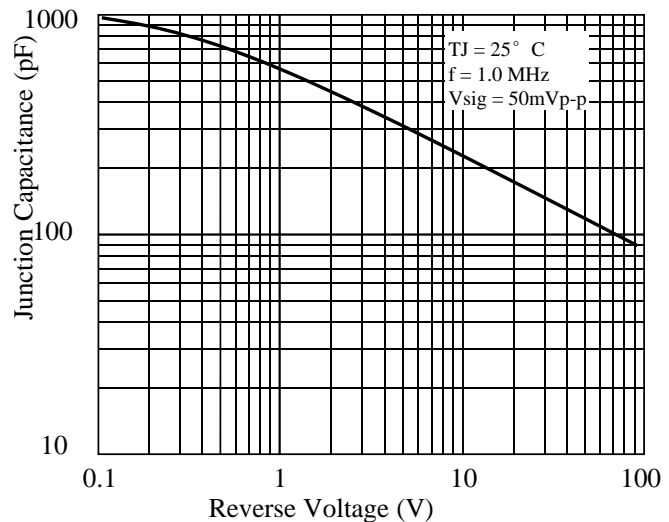


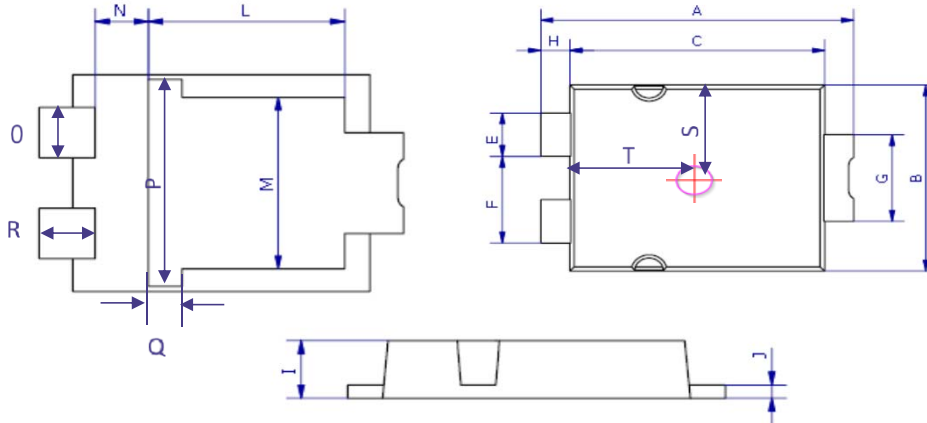
Fig 6. - Typical Junction Capacitance



SS15U60

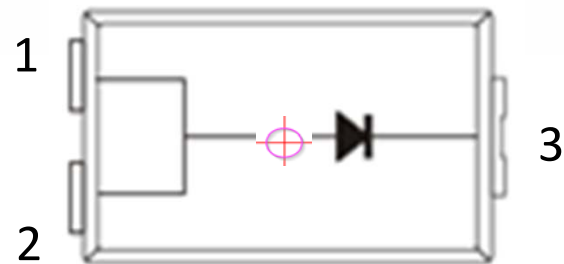
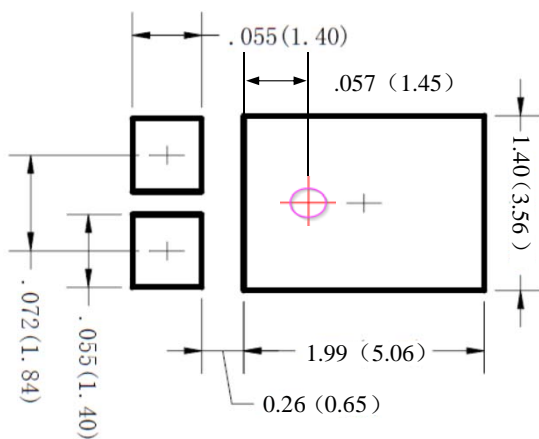
3. dimension:

TO-277A



DIM	MILLIMETERS		INCHES	
	MIN	MAX	MIN	MAX
A	6.3	6.7	0.248	0.264
B	4.1	4.5	0.161	0.177
C	5.1	5.5	0.201	0.217
E	0.9	1.1	0.035	0.043
F	1.9	2.1	0.075	0.083
G	1.9	2.1	0.075	0.083
H	0.50	0.70	0.020	0.028
I	1.00	1.20	0.039	0.047
J	0.15	0.35	0.006	0.014
L	3.30	3.70	0.130	0.146
M	3.20	3.60	0.126	0.142
N	0.80	1.10	0.033	0.043
O	0.90	1.10	0.035	0.043
P	3.90	4.30	0.154	0.169
Q	0.50	0.80	0.020	0.031
R	0.85	1.15	0.033	0.045
S	2.00	2.30	0.079	0.091
T	2.50	2.80	0.098	0.110

Mounting PAD layout



- 1: Anode
- 2: Anode
- 3: Cathode

SS15U60

4. Update Record

版次	更新记录	更新作者	更新日期
1	第一版	谭志伟	2016-6-29

单击下面可查看定价，库存，交付和生命周期等信息

[>>LRC\(乐山无线电\)](#)