

S-SMB10J*** CA Series

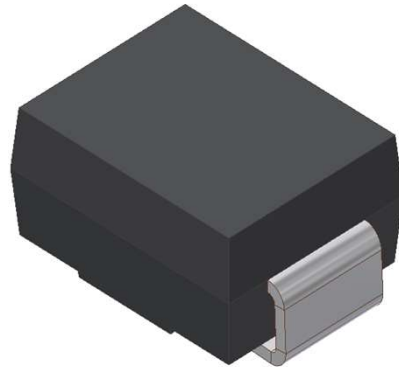
SURFACE MOUNT TRANSIENT VOLTAGE SUPPRESSOR

VOLTAGE 5.0 TO 250 Volts, 1000 Watt Peak Pulse Power

1. FEATURES

- We declare that the material of product compliance with RoHS requirements and Halogen Free.
- Plastic package has Underwriters Laboratory Flammability Classification 94V-O
- For surface mounted applications in order to optimize board space
- Low profile package
- Built-in strain relief
- Glass passivated junction
- Low inductance
- Excellent clamping capability
- Repetition Rate (duty cycle):0.01%
- Fast response time: typically less than 1.0ps
- Typical IR less than 1mA above 10V
- High temperature soldering guaranteed: 260°C/10 seconds,
- S- prefix for automotive and other applications requiring unique site and control change requirements; AEC-Q101 qualified and PPAP capable.
- Weight: 0.088g

SMB
(JEDEC DO-214AA)



2.MECHANICAL DATA

Case: Epoxy, Molded

Terminals: Plated leads, solderable per MIL-STD-202, Method 208

Polarity: Without Color band denoted cathode

Mounting Position: Any

3. MAXIMUM RATINGS(Ta = 25°C)

Ratings at 25°C ambient temperature unless otherwise specified.

Single phase, half wave, 60Hz, resistive or inductive load.

For capacitive load, derate current by 20%.

RATING	VALUE	UNITS
Peak Power Dissipation at T _A =25°C, T _P =1ms(Note 1)	Minimum1000	Watts
Steady State Power Dissipation at T _L =75°C(Note 2)	3.0	Watts
Operating Temperature Range	-55 to +150	°C
Storage Temperature Range	-55 to +150	°C

NOTES:

1. Non-repetitive current pulse, per Fig. 3 and derated above TA=25°C per Fig. 2.

S-SMB10J*** CA Series

Bi-Directional Part Number	Device marking code	Reverse Stand-off Voltage VRWM (V)	Breakdown Voltage VBR (V) Min. @IT	Breakdown Voltage VBR (V) Max. @IT	Test Current IT (mA)	Maximum Clamping Voltage @IPP VC (V)	Peak Pulse Current Ipp (A)	Reverse Leakage @VRWM IR (uA)
S-SMB10J5.0CA	SMB10J5.0CA	5.00	6.40	7.00	10.00	9.20	108.7	800
S-SMB10J6.0CA	SMB10J6.0CA	6.00	6.67	7.37	10.00	10.30	97.1	800
S-SMB10J6.5CA	SMB10J6.5CA	6.50	7.22	7.98	10.00	11.20	89.3	500
S-SMB10J7.0CA	SMB10J7.0CA	7.00	7.78	8.60	10.00	12.00	83.3	200
S-SMB10J7.5CA	SMB10J7.5CA	7.50	8.33	9.21	1.00	12.90	77.5	100
S-SMB10J8.0CA	SMB10J8.0CA	8.00	8.89	9.83	1.00	13.60	73.5	50
S-SMB10J8.5CA	SMB10J8.5CA	8.50	9.44	10.40	1.00	14.40	69.4	20
S-SMB10J9.0CA	SMB10J9.0CA	9.00	10.00	11.10	1.00	15.40	64.9	10
S-SMB10J10CA	SMB10J10CA	10.00	11.10	12.30	1.00	17.00	58.8	1
S-SMB10J11CA	SMB10J11CA	11.00	12.20	13.50	1.00	18.20	54.9	1
S-SMB10J12CA	SMB10J12CA	12.00	13.30	14.70	1.00	19.90	50.3	1
S-SMB10J13CA	SMB10J13CA	13.00	14.40	15.90	1.00	21.50	46.5	1
S-SMB10J14CA	SMB10J14CA	14.00	15.60	17.20	1.00	23.20	43.1	1
S-SMB10J15CA	SMB10J15CA	15.00	16.70	18.50	1.00	24.40	41.0	1
S-SMB10J16CA	SMB10J16CA	16.00	17.80	19.70	1.00	26.00	38.5	1
S-SMB10J17CA	SMB10J17CA	17.00	18.90	20.90	1.00	27.60	36.2	1
S-SMB10J18CA	SMB10J18CA	18.00	20.00	22.10	1.00	29.20	34.2	1
S-SMB10J20CA	SMB10J20CA	20.00	22.20	24.50	1.00	32.40	30.9	1
S-SMB10J22CA	SMB10J22CA	22.00	24.40	26.90	1.00	35.50	28.2	1
S-SMB10J24CA	SMB10J24CA	24.00	26.70	29.50	1.00	38.90	25.7	1
S-SMB10J26CA	SMB10J26CA	26.00	28.90	31.90	1.00	42.10	23.8	1
S-SMB10J28CA	SMB10J28CA	28.00	31.10	34.40	1.00	45.40	22.0	1
S-SMB10J30CA	SMB10J30CA	30.00	33.30	36.80	1.00	48.40	20.7	1
S-SMB10J33CA	SMB10J33CA	33.00	36.70	40.60	1.00	53.30	18.8	1
S-SMB10J36CA	SMB10J36CA	36.00	40.00	44.20	1.00	58.10	17.2	1
S-SMB10J40CA	SMB10J40CA	40.00	44.40	49.10	1.00	64.50	15.5	1
S-SMB10J43CA	SMB10J43CA	43.00	47.80	52.80	1.00	69.40	14.4	1
S-SMB10J45CA	SMB10J45CA	45.00	50.00	55.30	1.00	72.70	13.8	1
S-SMB10J48CA	SMB10J48CA	48.00	53.30	58.90	1.00	77.40	12.9	1
S-SMB10J51CA	SMB10J51CA	51.00	56.70	62.70	1.00	82.40	12.1	1
S-SMB10J54CA	SMB10J54CA	54.00	60.00	66.30	1.00	87.10	11.5	1
S-SMB10J58CA	SMB10J58CA	58.00	64.40	71.20	1.00	93.60	10.7	1
S-SMB10J60CA	SMB10J60CA	60.00	66.70	73.70	1.00	96.80	10.3	1
S-SMB10J64CA	SMB10J64CA	64.00	71.10	78.60	1.00	103.00	9.7	1
S-SMB10J70CA	SMB10J70CA	70.00	77.80	86.00	1.00	113.00	8.8	1
S-SMB10J75CA	SMB10J75CA	75.00	83.30	92.10	1.00	121.00	8.3	1
S-SMB10J78CA	SMB10J78CA	78.00	86.70	95.80	1.00	126.00	7.9	1
S-SMB10J80CA	SMB10J80CA	80.00	88.80	97.60	1.00	129.00	7.8	1
S-SMB10J85CA	SMB10J85CA	85.00	94.40	104.00	1.00	137.00	7.3	1
S-SMB10J90CA	SMB10J90CA	90.00	100.00	111.00	1.00	146.00	6.8	1
S-SMB10J100CA	SMB10J100CA	100.00	111.00	123.00	1.00	162.00	6.2	1
S-SMB10J110CA	SMB10J110CA	110.00	122.00	135.00	1.00	177.00	5.6	1
S-SMB10J120CA	SMB10J120CA	120.00	133.00	147.00	1.00	193.00	5.2	1
S-SMB10J130CA	SMB10J130CA	130.00	144.00	159.00	1.00	209.00	4.8	1
S-SMB10J150CA	SMB10J150CA	150.00	167.00	185.00	1.00	243.00	4.1	1
S-SMB10J160CA	SMB10J160CA	160.00	178.00	197.00	1.00	259.00	3.9	1
S-SMB10J170CA	SMB10J170CA	170.00	189.00	209.00	1.00	275.00	3.6	1
S-SMB10J180CA	SMB10J180CA	180.00	198.00	221.00	1.00	291.00	3.4	1
S-SMB10J190CA	SMB10J190CA	190.00	209.00	233.00	1.00	307.00	3.3	1
S-SMB10J200CA	SMB10J200CA	200.00	220.00	246.00	1.00	324.00	3.1	1
S-SMB10J220CA	SMB10J220CA	220.00	246.00	272.00	1.00	356.00	2.8	1
S-SMB10J250CA	SMB10J250CA	250.00	279.00	309.00	1.00	405.00	2.5	1

5. ELECTRICAL CHARACTERISTICS CURVES

Fig. 1-Peak Pulse Power Rating Curve

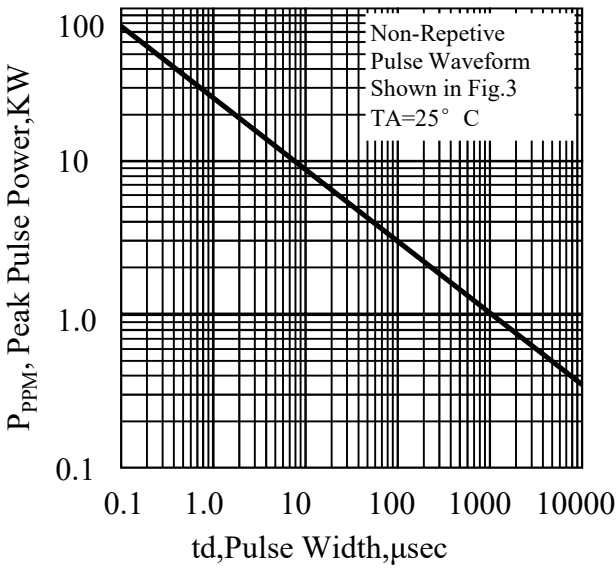


Fig. 2-Pulse Derating Curve

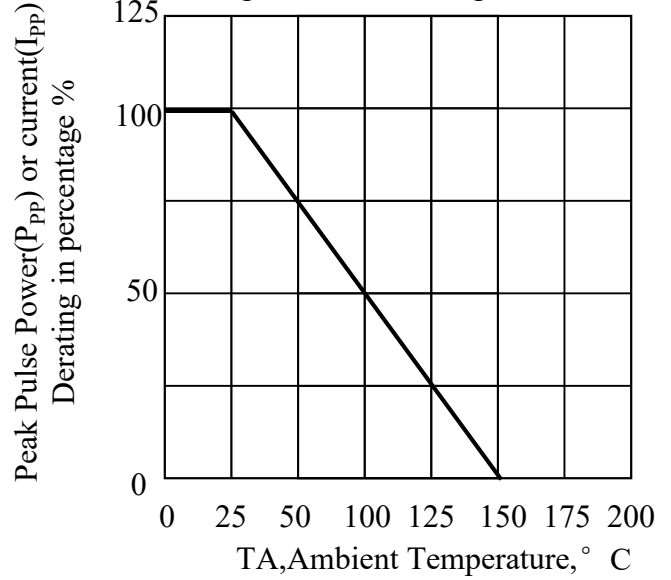


Fig. 3-Pulse Waveform

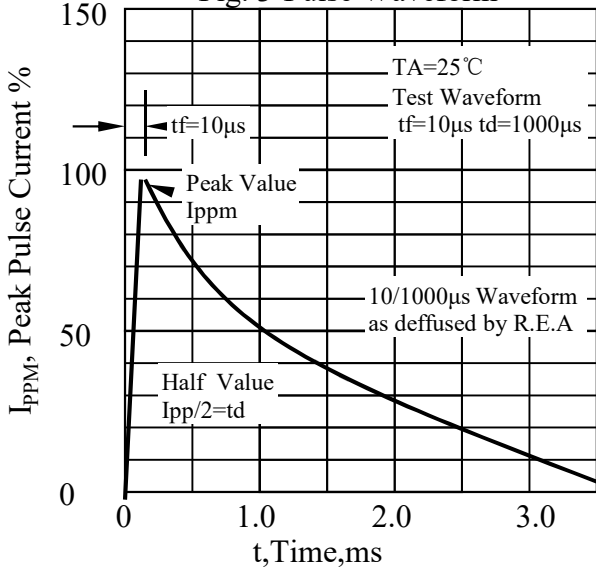
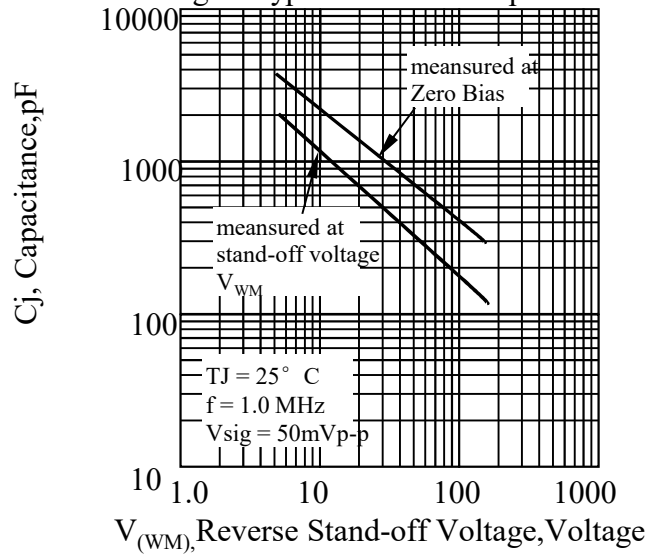
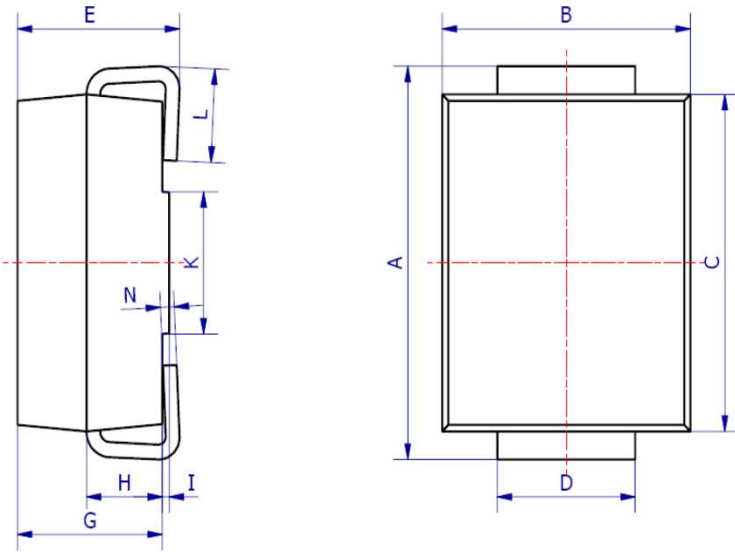


Fig. 4-Typical Junction Capacitance

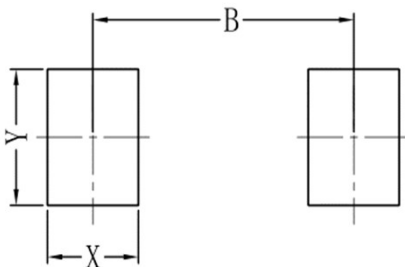


6. OUTLINE AND DIMENSIONS



SMB			
DIM	Min	Max	Typ.
A	5.00	5.45	5.25
B	3.20	4.00	3.60
C	4.30	4.70	4.50
D	1.80	2.20	2.00
E	2.20	2.50	2.35
G	1.90	2.30	2.10
H	0.95	1.25	1.10
I	0.05	0.15	0.10
K	1.70	2.10	1.90
L	0.90	1.50	1.20
N	0.10	0.30	0.20
All Dimensions in mm			

7. SOLDERING FOOTPRINT



SMB	
DIM	(mm)
X	1.60
Y	2.20
B	4.60

单击下面可查看定价，库存，交付和生命周期等信息

[>>LRC\(乐山无线电\)](#)