

LTVS16D18H5.0T5G

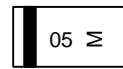
LTVS16D18H5.0T5G

Features

- 5V uni-directional ESD diode
- Low clamping voltage
- Complies with IEC 61000-4-2 standards:
 - Air discharge: $\pm 30\text{kV}$
 - Contact discharge: $\pm 30\text{kV}$
- RoHS Compliant



MARKING DIAGRAM



cathode

05 = Specific Device Code
M = Month Code

Ordering information

| Device | Marking | Shipping |
|------------------|---------|----------------|
| LTVS16D18H5.0T5G | 05 | 8000/Tape&Reel |

Absolute Maximum Ratings ($T_A=25^\circ\text{C}$ unless otherwise specified)

| Parameter | Symbol | Value | Unit |
|--|------------------|-------------|------------------|
| Peak Pulse Power (8/20 μs) | Ppk | 1500 | W |
| Peak Pulse Current (8/20 μs) | I _{PP} | 100 | A |
| Operating Temperature Range | T _J | -55 to +125 | $^\circ\text{C}$ |
| Storage Temperature Range | T _{stg} | -55 to +150 | $^\circ\text{C}$ |

Electrical Characteristics ($T_A=25^\circ\text{C}$ unless otherwise specified)

| Parameter | Symbol | Min | Typ | Max | Unit | Test Condition |
|-------------------------|------------------|-----|-----|-----|---------------|--|
| Reverse Working Voltage | V _{RWM} | | | 5 | V | |
| Breakdown Voltage | V _{BR} | 6 | | 7.8 | V | I _T = 1mA |
| Reverse Leakage Current | I _R | | | 2 | μA | V _R = 5V |
| Clamping Voltage | V _C | | | 8.5 | V | I _{PP} = 10A (8 x 20 μs pulse) |
| Clamping Voltage | V _C | | | 17 | V | I _{PP} = 80A (8 x 20 μs pulse) |
| Junction Capacitance | C _J | | | 800 | pF | V _R = 0V, f = 1MHz |

Note: Electrical parameters are only for die, performance may alter after assembly.

LTVS16D18H5.0T5G

Typical Performance Characteristics (T_A=25°C unless otherwise Specified)

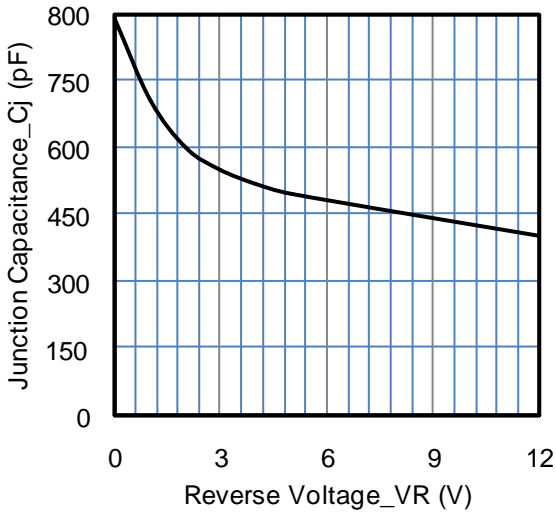


Fig1. Junction Capacitance vs. Reverse Voltage

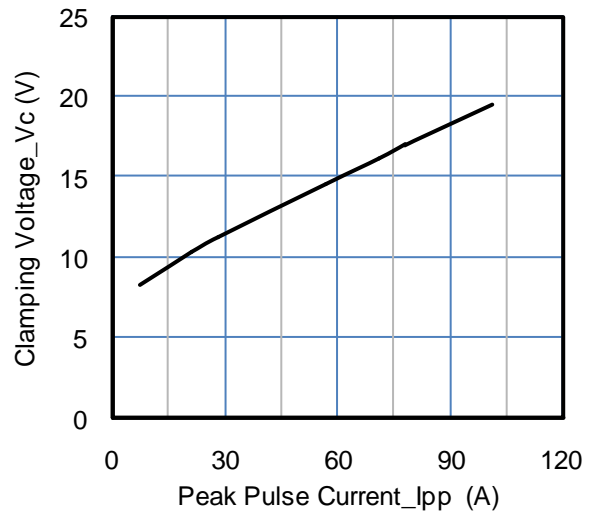


Fig2. Clamping Voltage vs. Peak Pulse Current

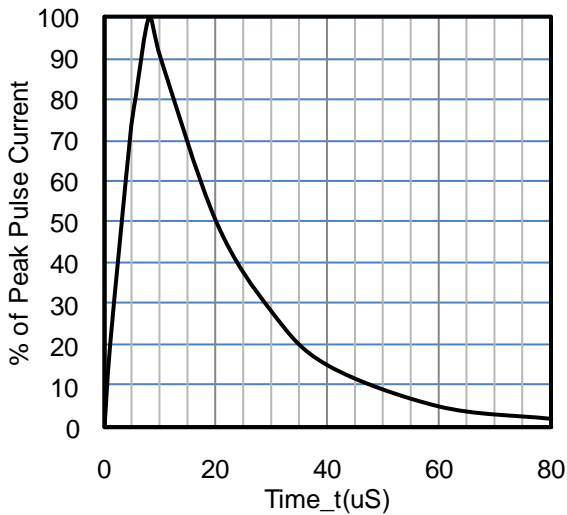


Fig3. 8 X 20uS Pulse Waveform

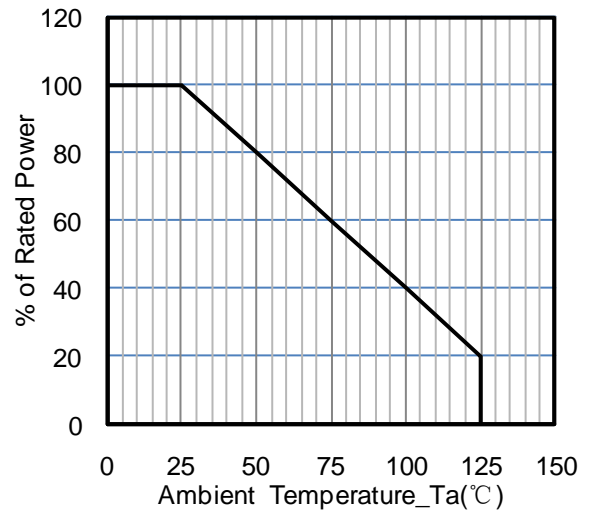


Fig4. Power Derating Curve

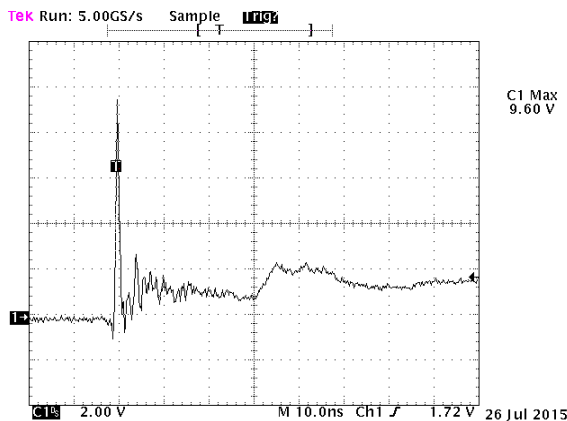


Fig 5. ESD Clamping Voltage
Positive 8 kV Contact per IEC61000-4-2

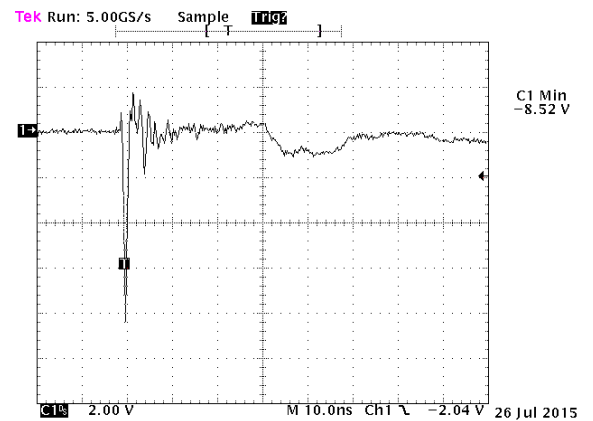
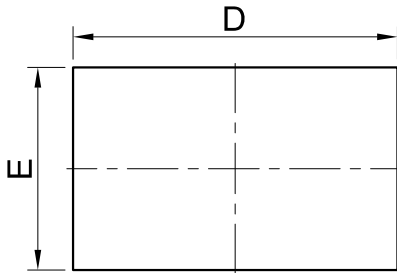


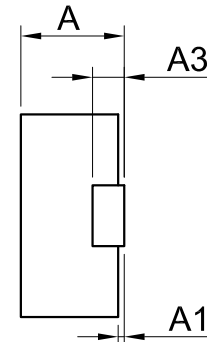
Fig 6. ESD Clamping Voltage
Negative 8 kV Contact per IEC61000-4-2

LTVS16D18H5.0T5G

OUTLINE AND DIMENSIONS

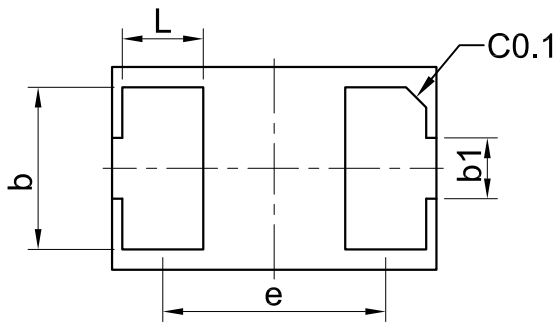


TOP VIEW



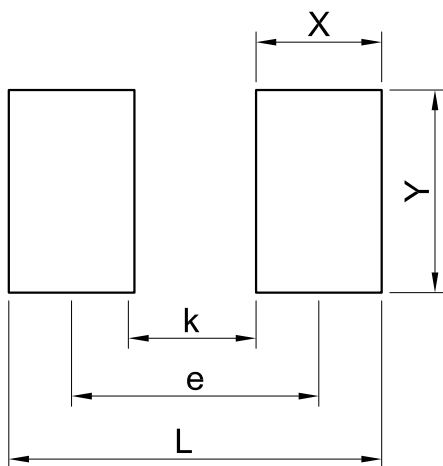
SIDE VIEW

| DFN1610 | | | |
|----------------------|-----------|------|------|
| DIM | MIN | NOR | MAX |
| A | 0.46 | 0.51 | 0.56 |
| A1 | 0.01 | 0.03 | 0.05 |
| b | 0.75 | 0.80 | 0.85 |
| b1 | 0.25 | 0.30 | 0.35 |
| D | 1.55 | 1.60 | 1.65 |
| E | 0.95 | 1.00 | 1.05 |
| e | 1.10BSC | | |
| L | 0.35 | 0.40 | 0.45 |
| A3 | 0.127REF. | | |
| All Dimensions in mm | | | |



BOTTOM VIEW

SOLDERING FOOTPRINT



| DFN1610 | |
|---------|------|
| DIM | (mm) |
| X | 0.62 |
| Y | 1.00 |
| L | 1.84 |
| e | 1.22 |
| K | 0.60 |

单击下面可查看定价，库存，交付和生命周期等信息

[>>LRC\(乐山无线电\)](#)

[>>点击查看相关商品](#)