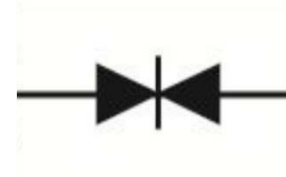


S-SMCJ*** CA Series

SURFACE MOUNT TRANSIENT VOLTAGE SUPPRESSOR
VOLTAGE 5 TO 250 Volts, 1500 Watt Peak Pulse Power

1. FEATURES

- We declare that the material of product compliance with RoHS requirements and Halogen Free.
- Plastic package has Underwriters Laboratory Flammability Classification 94V-O
- For surface mounted applications in order to optimize board space
- Low profile package
- Built-in strain relief
- Glass passivated junction
- Low inductance
- Excellent clamping capability
- Repetition Rate (duty cycle):0.01%
- Fast response time: typically less than 1.0ps
- High temperature soldering guaranteed:
260°C/10 seconds,
- Weight: 0.26g
- S- prefix for automotive and other applications requiring unique site and control change requirements; AEC-Q101 qualified and PPAP capable.



2. MECHANICAL DATA

Case: JEDEC DO-214AB (SMC)

Terminals: Plated leads, solderable per MIL-STD-202, Method 208

Polarity: Without Color band denoted cathode

Mounting Position: Any

3. MAXIMUM RATINGS(Ta = 25°C)

Ratings at 25°C ambient temperature unless otherwise specified.

Single phase, half wave, 60Hz, resistive or inductive load.

For capacitive load, derate current by 20%.

RATING	Symbol	VALUE	UNITS
Peak Power Dissipation at T _A =25°C, T _P =1ms(Note 1)	P _{PPM}	Minimum 1500	Watts
Steady State Power Dissipation at T _L =75°C(Note 2)	P _{M(AV)}	6.5	Watts
Operating Temperature Range	T _J	-55 to +150	°C
Storage Temperature Range	T _{STG}	-55 to +150	°C

NOTES:

1. Non-repetitive current pulse, per Fig. 3 and derated above TA=25°C per Fig. 2.
2. Mounted on 0.31 x 0.31" (8.0 x 8.0mm) copper pads to each terminal.

S-SMCJ*** CA Series

Bi-Directional Part Number	Device marking code	Reverse Stand-off Voltage VRWM (V)	Breakdown Voltage VBR (V) Min. @IT	Breakdown Voltage VBR (V) Max. @IT	Test Current IT (mA)	Maximum Clamping Voltage @IPP VC (V)	Peak Pulse Current Ipp (A)	Reverse Leakage @VRWM IR (uA)
S-SMCJ5.0CA	SMCJ5.0CA	5.00	6.40	7.07	10.0	9.20	163.0	1000
S-SMCJ6.0CA	SMCJ6.0CA	6.00	6.67	7.37	10.0	10.30	145.6	1000
S-SMCJ6.5CA	SMCJ6.5CA	6.50	7.22	7.98	10.0	11.20	133.9	500
S-SMCJ7.0CA	SMCJ7.0CA	7.00	7.78	8.60	10.0	12.00	125.0	200
S-SMCJ7.5CA	SMCJ7.5CA	7.50	8.33	9.21	1.0	12.90	116.3	100
S-SMCJ8.0CA	SMCJ8.0CA	8.00	8.89	9.83	1.0	13.60	110.3	50
S-SMCJ8.5CA	SMCJ8.5CA	8.50	9.44	10.40	1.0	14.40	104.2	20
S-SMCJ9.0CA	SMCJ9.0CA	9.00	10.00	11.10	1.0	15.40	97.4	10
S-SMCJ10CA	SMCJ10CA	10.00	11.10	12.30	1.0	17.00	88.2	5
S-SMCJ11CA	SMCJ11CA	11.00	12.20	13.50	1.0	18.20	82.4	5
S-SMCJ12CA	SMCJ12CA	12.00	13.30	14.70	1.0	19.90	75.4	5
S-SMCJ13CA	SMCJ13CA	13.00	14.40	15.90	1.0	21.50	69.8	1
S-SMCJ14CA	SMCJ14CA	14.00	15.60	17.20	1.0	23.20	64.7	1
S-SMCJ15CA	SMCJ15CA	15.00	16.70	18.50	1.0	24.40	61.5	1
S-SMCJ16CA	SMCJ16CA	16.00	17.80	19.70	1.0	26.00	57.7	1
S-SMCJ17CA	SMCJ17CA	17.00	18.90	20.90	1.0	27.60	54.3	1
S-SMCJ18CA	SMCJ18CA	18.00	20.00	22.10	1.0	29.20	51.4	1
S-SMCJ20CA	SMCJ20CA	20.00	22.20	24.50	1.0	32.40	46.3	1
S-SMCJ22CA	SMCJ22CA	22.00	24.40	26.90	1.0	35.50	42.3	1
S-SMCJ24CA	SMCJ24CA	24.00	26.70	29.50	1.0	38.90	38.6	1
S-SMCJ26CA	SMCJ26CA	26.00	28.90	31.90	1.0	42.10	35.6	1
S-SMCJ28CA	SMCJ28CA	28.00	31.10	34.40	1.0	45.40	33.0	1
S-SMCJ30CA	SMCJ30CA	30.00	33.30	36.80	1.0	48.40	31.0	1
S-SMCJ33CA	SMCJ33CA	33.00	36.70	40.60	1.0	53.30	28.1	1
S-SMCJ36CA	SMCJ36CA	36.00	40.00	44.20	1.0	58.10	25.8	1
S-SMCJ40CA	SMCJ40CA	40.00	44.40	49.10	1.0	64.50	23.3	1
S-SMCJ43CA	SMCJ43CA	43.00	47.80	52.80	1.0	69.40	21.6	1
S-SMCJ45CA	SMCJ45CA	45.00	50.00	55.30	1.0	72.70	20.6	1
S-SMCJ48CA	SMCJ48CA	48.00	53.30	58.90	1.0	77.40	19.4	1
S-SMCJ51CA	SMCJ51CA	51.00	56.70	62.70	1.0	82.40	18.2	1
S-SMCJ54CA	SMCJ54CA	54.00	60.00	66.30	1.0	87.10	17.2	1
S-SMCJ58CA	SMCJ58CA	58.00	64.40	71.20	1.0	93.60	16.0	1
S-SMCJ60CA	SMCJ60CA	60.00	66.70	73.70	1.0	96.80	15.5	1
S-SMCJ64CA	SMCJ64CA	64.00	71.10	78.60	1.0	103.00	14.6	1
S-SMCJ70CA	SMCJ70CA	70.00	77.80	86.00	1.0	113.00	13.3	1
S-SMCJ75CA	SMCJ75CA	75.00	83.30	92.10	1.0	121.00	12.4	1
S-SMCJ78CA	SMCJ78CA	78.00	86.70	95.80	1.0	126.00	11.9	1
S-SMCJ85CA	SMCJ85CA	85.00	94.40	104.00	1.0	137.00	10.9	1
S-SMCJ90CA	SMCJ90CA	90.00	100.00	111.00	1.0	146.00	10.3	1
S-SMCJ100CA	SMCJ100CA	100.00	111.00	123.00	1.0	162.00	9.3	1
S-SMCJ110CA	SMCJ110CA	110.00	122.00	135.00	1.0	177.00	8.5	1
S-SMCJ120CA	SMCJ120CA	120.00	133.00	147.00	1.0	193.00	7.8	1
S-SMCJ130CA	SMCJ130CA	130.00	144.00	159.00	1.0	209.00	7.2	1
S-SMCJ150CA	SMCJ150CA	150.00	167.00	185.00	1.0	243.00	6.2	1
S-SMCJ160CA	SMCJ160CA	160.00	178.00	197.00	1.0	259.00	5.8	1
S-SMCJ170CA	SMCJ170CA	170.00	189.00	209.00	1.0	275.00	5.5	1
S-SMCJ180CA	SMCJ180CA	180.00	198.00	221.00	1.0	291.00	5.2	1
S-SMCJ190CA	SMCJ190CA	190.00	209.00	233.00	1.0	307.00	4.9	1
S-SMCJ200CA	SMCJ200CA	200.00	220.00	246.00	1.0	324.00	4.6	1
S-SMCJ220CA	SMCJ220CA	220.00	246.00	272.00	1.0	356.00	4.2	1
S-SMCJ250CA	SMCJ250CA	250.00	279.00	309.00	1.0	405.00	3.7	1

5. ELECTRICAL CHARACTERISTICS CURVES

Fig. 1-Peak Pulse Power Rating Curve

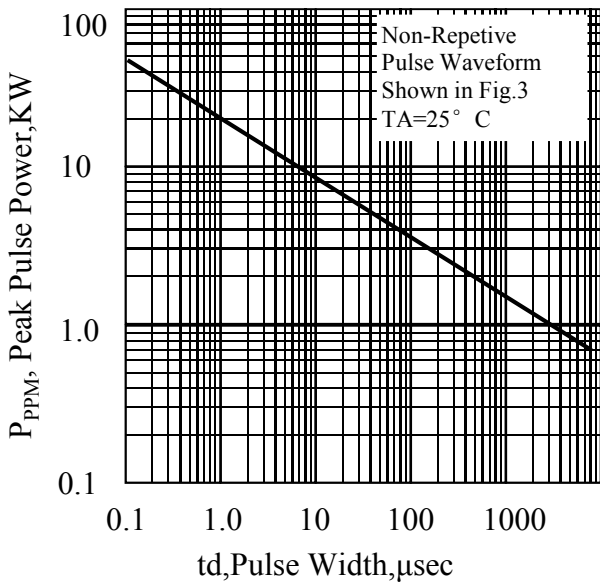


Fig. 2-Pulse Derating Curve

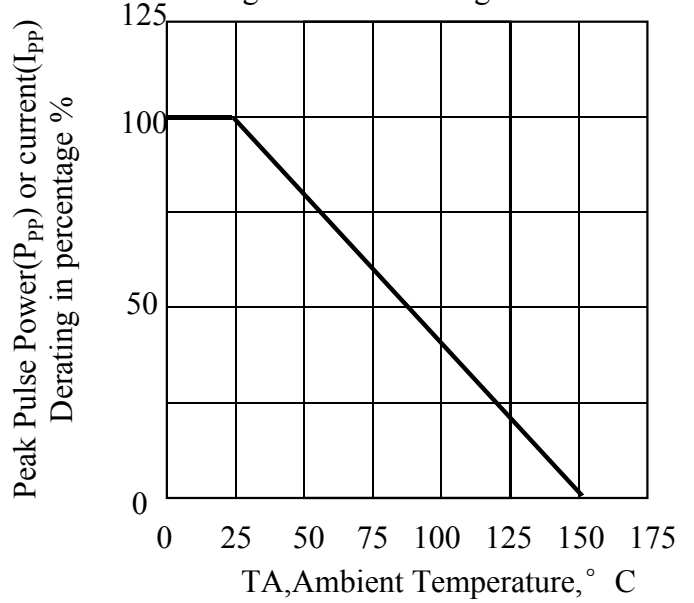


Fig. 3-Pulse Waveform

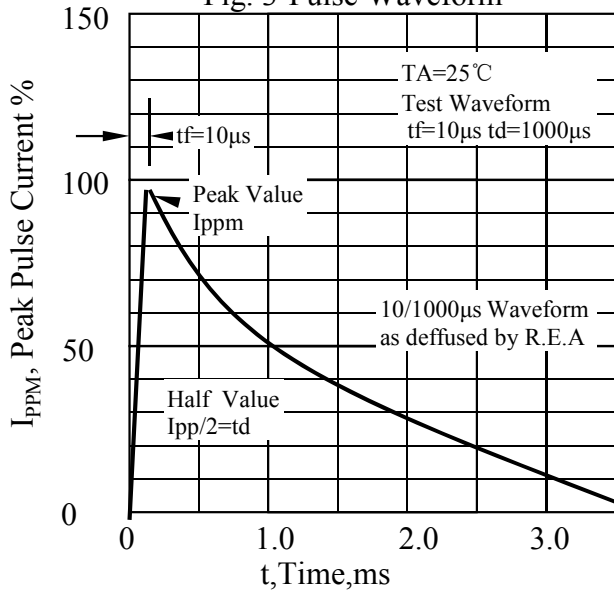
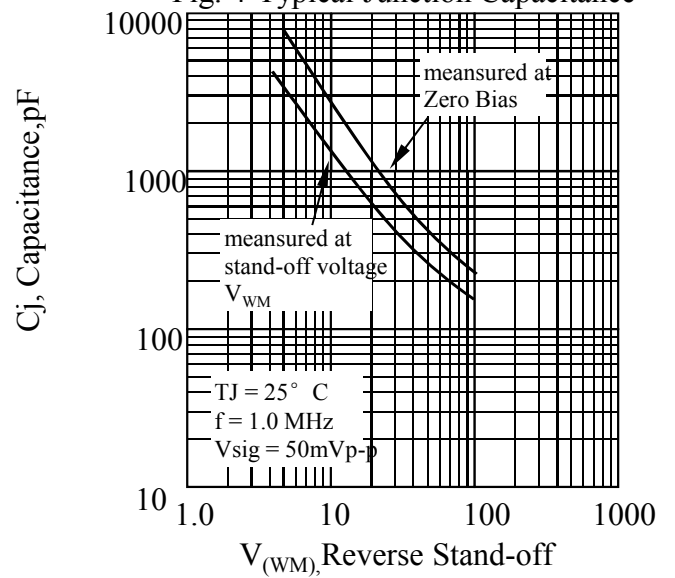
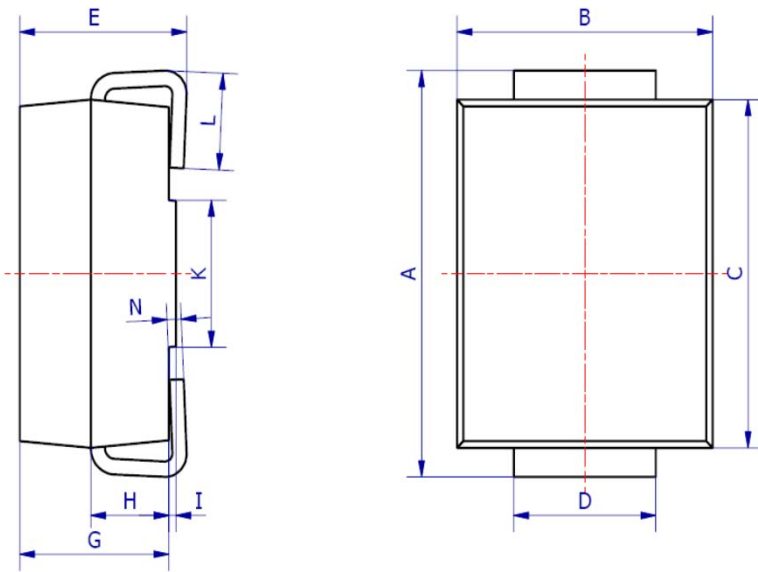


Fig. 4-Typical Junction Capacitance

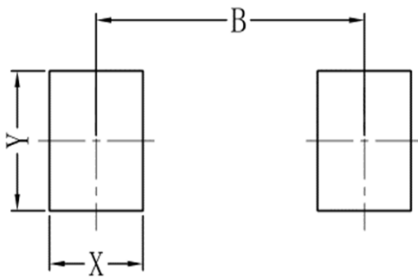


6. OUTLINE AND DIMENSIONS



SMC			
DIM	Min	Max	Typ.
A	7.70	8.30	8.00
B	5.85	6.25	6.05
C	6.65	7.05	6.85
D	2.80	3.20	3.00
E	2.45	2.85	2.65
G	2.10	2.50	2.30
H	1.00	1.40	1.20
I	0.05	0.15	0.10
K	4.30	4.70	4.50
L	1.00	1.50	1.25
N	0.10	0.30	0.20
All Dimensions in mm			

7. SOLDERING FOOTPRINT



SMC	
DIM	(mm)
X	1.60
Y	3.30
B	6.60

单击下面可查看定价，库存，交付和生命周期等信息

[>>LRC\(乐山无线电\)](#)