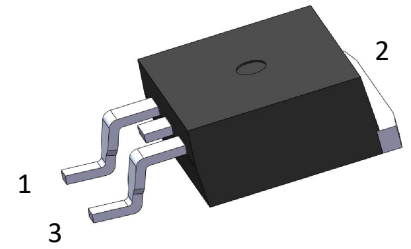


S-LMBR40S60DE2

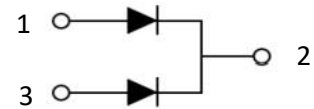
Schottky Rectifier

1. FEATURES

- We declare that the material of product compliance with RoHS requirements and Halogen Free.
- Plastic package has Underwriters Laboratory Flammability Classification 94 V-0
- For use in low voltage high frequency inverters, free wheeling, and polarity protection applications
- Low power loss, high efficiency



D²PAK (TO263)



2. DEVICE MARKING AND ORDERING INFORMATION

Device	Marking	Shipping
S-LMBR40S60DE2	LMBR40S60D	800pcs/Tape&Reel

3. MAXIMUM RATINGS(T_c=25°C, per diode)

Parameter	Symbol	Limit	Unit
Maximum Repetitive Peak Reverse Voltage	VRRM	60	V
Maximum RMS Voltage	VRMS	42	V
Maximum DC Blocking Voltage	VR	60	V
Average Forward Current (T _c =100°C, Duty Cycle=0.5)	I _{F(AV)}	Per device: 40 Per diode: 20	A
Peak Forward Surge Current 8.3ms Single Half Sine Wave Superimposed On Rated Load	I _{FSM}	300	A
Thermal Resistance, Junction-to-Case (per diode)	R _{θJC}	1.5	°C/W
Thermal Resistance, Junction-to-Case (per device)	R _{θJC}	0.8	°C/W
Operation Junction And Storage Temperature Range	T _J ,T _{STG}	-55 ~ +150	°C

4. ELECTRICAL CHARACTERISTICS(per diode)

Characteristic	Symbol	Conditions	Min	Typ	Max	Unit
Forward Voltage	V _F	I _F =20A, T _j =25°C			0.8	V
		I _F =20A, T _j =125°C			0.7	V
		I _F =40A, T _j =25°C			1.0	V
		I _F =40A, T _j =125°C			0.9	V
Reverse Leakage Current	I _R	VR=60V, T _j =25°C			0.1	mA
		VR=60V, T _j =125°C			20	mA

5. ELECTRICAL CHARACTERISTICS CURVES (per diode)

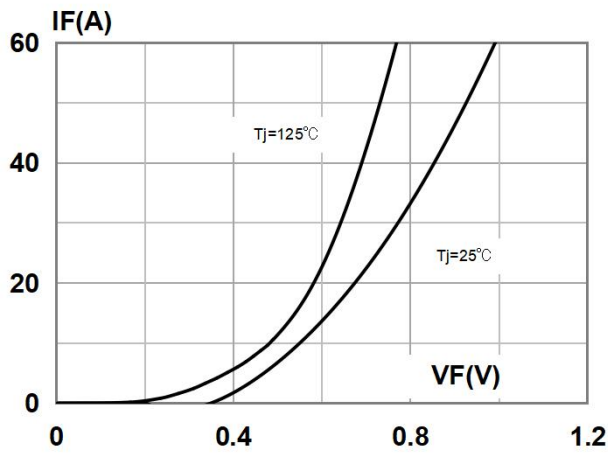


Fig1- Forward Current Versus Forward Voltage (Typical Values)

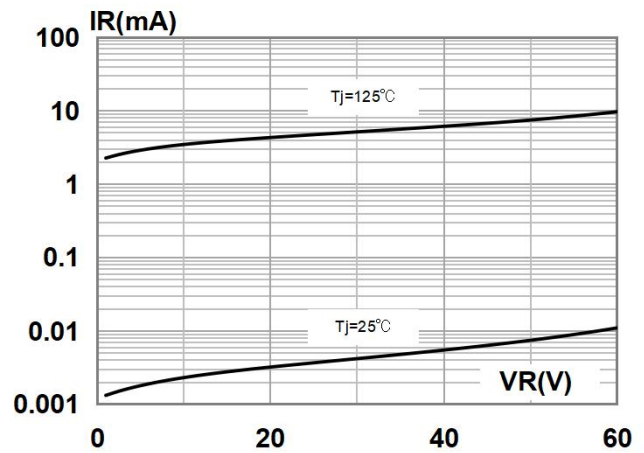


Fig2- Reverse Leakage Current Versus Reverse Voltage Applied (Typical Values)

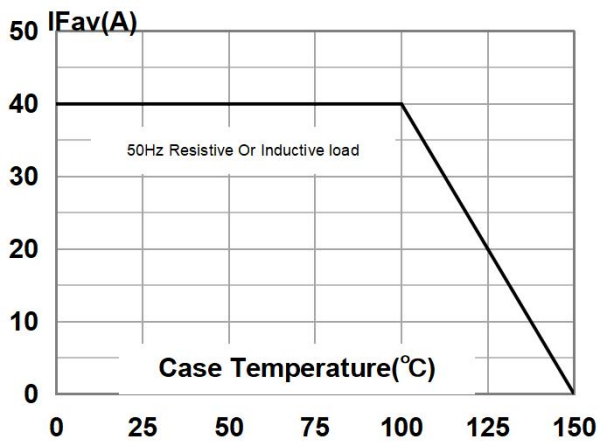


Fig3- Forward Current Derating Curve (per device)

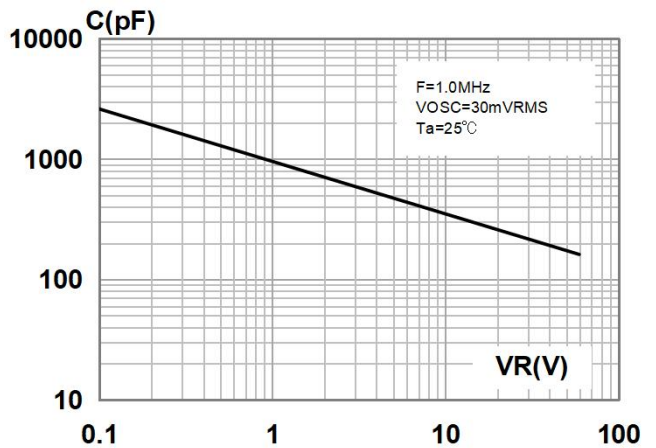
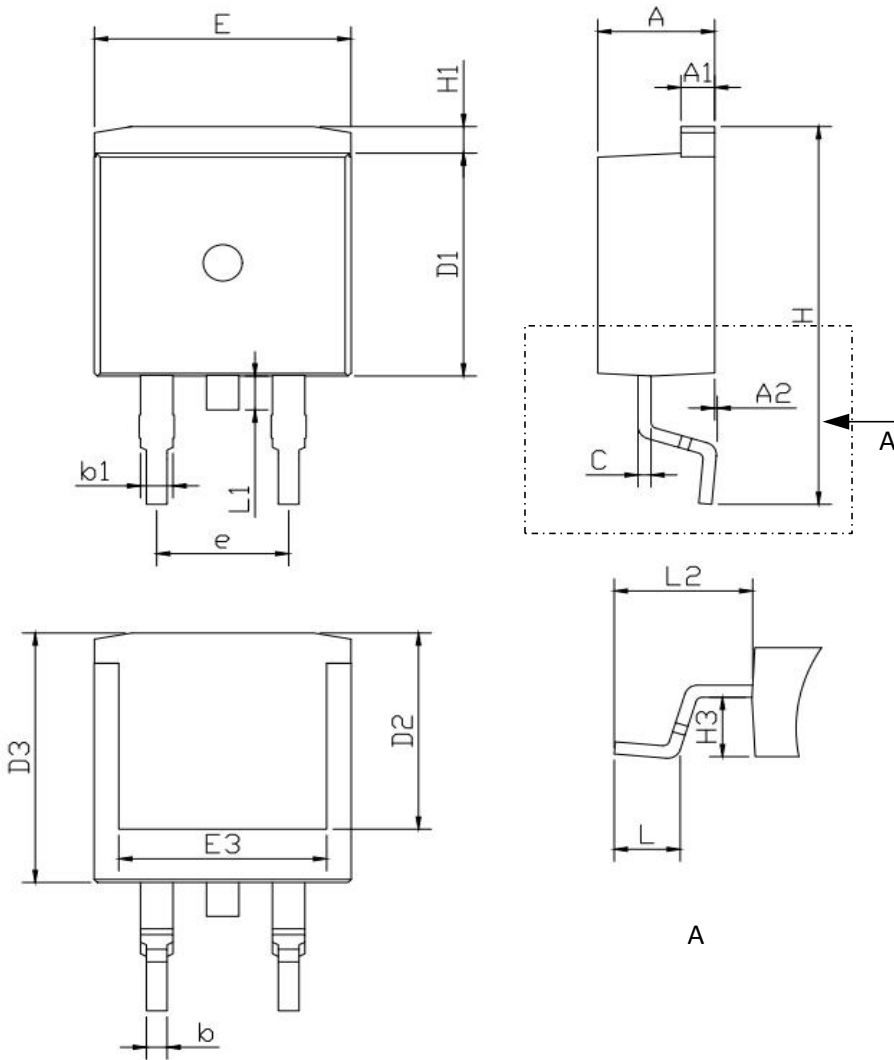


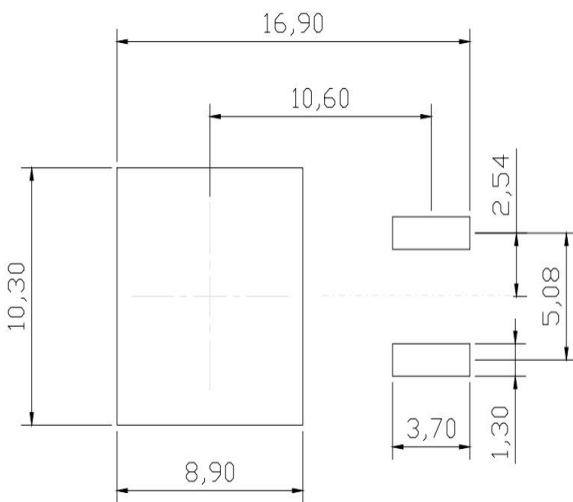
Fig4- Junction Capacitance Versus Reverse Voltage Applied (Typical Value)

6. OUTLINE AND DIMENSIONS



D ² PAK/TO-263			
DIM	MIN	NOR	MAX
A	4.40	4.50	4.60
A1	1.20	1.30	1.40
A2	0.00	-	0.20
b	0.70	0.80	0.90
b1	1.05	1.25	1.45
C	0.40	0.50	0.60
D1	9.00	9.20	9.40
D2	8.1REF		
D3	10.10	10.40	10.70
E	9.70	9.90	10.10
E3	8.0REF		
e	4.88	5.08	5.28
H	15.20	15.50	15.80
H1	1.00	1.20	1.40
H3	2.20	2.40	2.60
L	2.34	2.54	2.74
L1	1.10	1.40	1.70
L2	5.10	5.30	5.50
Dimensions are in mm			

7. SOLDERING FOOTPRINT



DISCLAIMER

- Curve guarantee in the specification. The curve of test items with electric parameter is used as quality guarantee. The curve of test items without electric parameter is used as reference only.
- Before you use our Products for new Project, you are requested to carefully read this document and fully understand its contents. LRC shall not be in any way responsible or liable for failure, malfunction or accident arising from the use of any LRC's Products against warning, caution or note contained in this document.
- All information contained in this document is current as of the issuing date and subject to change without any prior notice. Before purchasing or using LRC's Products, please confirm the latest information with a LRC sales representative.

单击下面可查看定价，库存，交付和生命周期等信息

[>>LRC\(乐山无线电\)](#)