



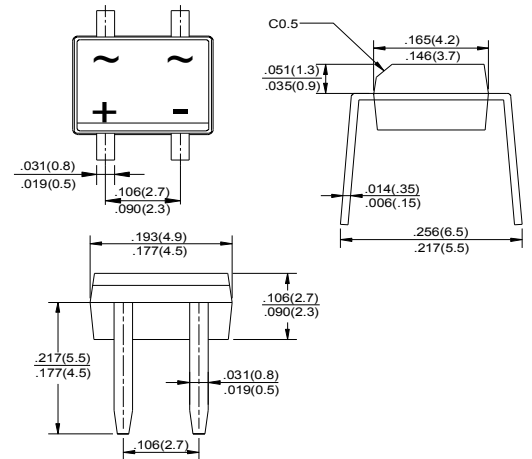
# MB2M THRU MB10M

Voltage Range - 200 to 1000 Volts Current - 0.5/0.8 Ampere

## SINGLE PHASE GLASS PASSIVATED BRIDGE RECTIFIERS

### Features

- ◆ Ideal for printed circuit board
- ◆ Reliable low cost construction utilizing molded plastic technique
- ◆ High temperature soldering guaranteed: 260°/10 seconds at 5 lbs., (2.3kg) tension
- ◆ Small size, simple installation
- ◆ High surge current capability
- ◆ Glass passivated chip junction



Dimensions in inches and (millimeters)

### Mechanical Data

**Case :** JEDEC MBM Molded plastic body

**Terminals :** Solder plated, solderable per MIL-STD-750, Method 2026

**Polarity :** Polarity symbol marking on body

**Mounting Position :** Any

**Weight :** 0.0044 ounce, 0.125 grams

### Maximum Ratings And Electrical Characteristics

Ratings at 25°C ambient temperature unless otherwise specified.

Single phase half-wave 60Hz, resistive or inductive load, for capacitive load current derate by 20%.

Parameter	SYMBOLS	MB2M	MB4M	MB6M	MB8M	MB10M	UNITS
		MDD MB2M	MDD MB4M	MDD MB6M	MDD MB8M	MDD MB10M	
Maximum repetitive peak reverse voltage	$V_{RRM}$	200	400	600	800	1000	V
Maximum RMS voltage	$V_{RMS}$	140	280	420	560	700	V
Maximum DC blocking voltage	$V_{DC}$	200	400	600	800	1000	V
Maximum average forward rectified current at $T_C=30^\circ C$ On glass-epoxy P.C.B. On aluminum substrate	$I_{F(AV)}$			0.5 0.8			A
Peak forward surge current, 8.3ms single half sine-wave superimposed on rated load (JEDEC Method)	$I_{FSM}$			30			A
Maximum instantaneous forward voltage drop per leg at 1A	$V_F$			1.0			V
Maximum DC reverse current at rated DC blocking voltage $T_A=25^\circ C$ $T_A=100^\circ C$	$I_R$			5 500			$\mu A$ $\mu A$
Typical junction capacitance	$C_J$			15			pF
Typical thermal resistance	$R_{\theta JA}$			75			$^\circ C/W$
Operating temperature range	$T_J$			-55 to +150			$^\circ C$
storage temperature range	$T_{STG}$			-55 to +150			$^\circ C$

Note: 1. Measured at 1MHz and applied reverse voltage of 4 V D.C.

2. Mounted on glass epoxy PC board with 4x1.5"x1.5" ( 3.81x3.81 cm ) copper pad.



# MB2M THRU MB10M

Voltage Range - 200 to 1000 Volts Current - 0.5/0.8 Ampere

## Ratings And Characteristic Curves

FIG. 1- DERATING CURVE OUTPUT RECTIFIED CURRENT FOR

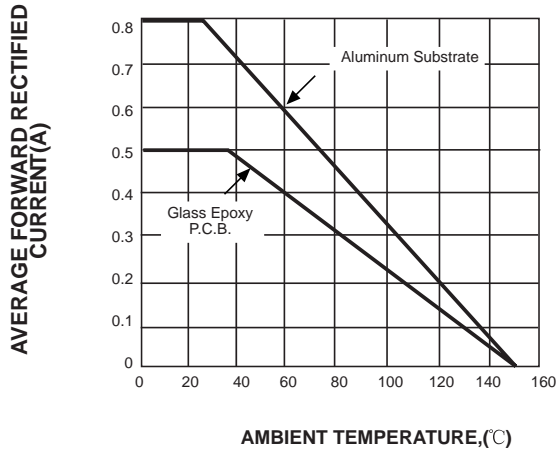


FIG. 2-MAXIMUM NON-REPETITIVE PEAK FORWARD SURGE CURRENT PER LEG

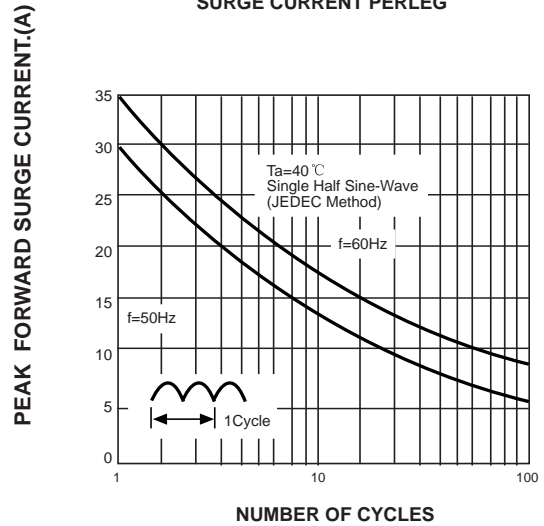


FIG. 3-TYPICAL FORWARD VOLTAGE CHARACTERISTICS PER LEG

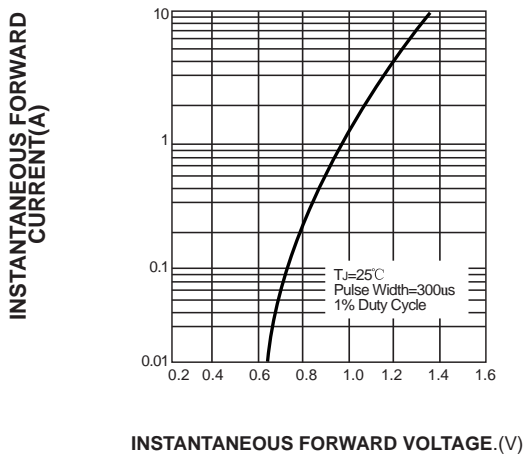


FIG. 4-TYPICAL REVERSE LEAKAGE CHARACTERISTICS PER LEG

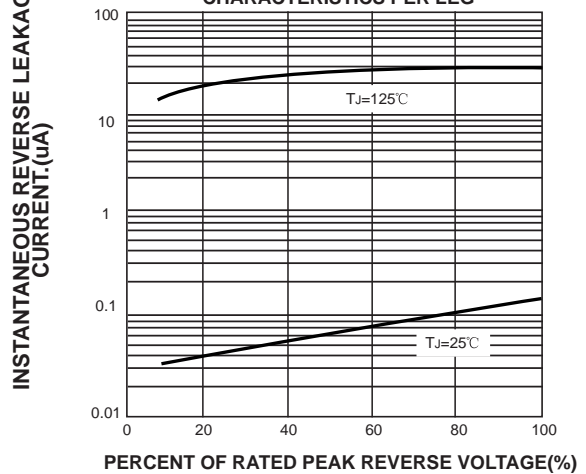
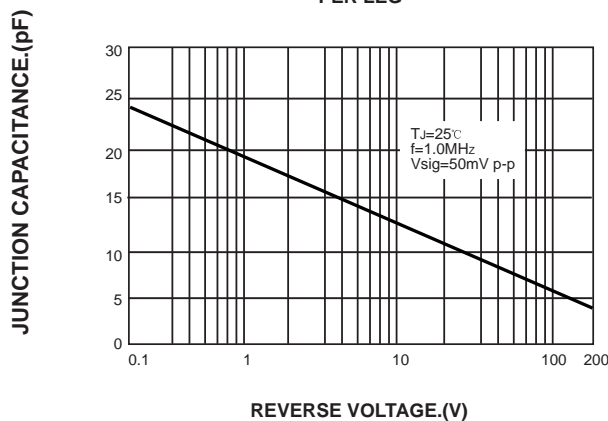


FIG. 5-TYPICAL JUNCTION CAPACITANCE PER LEG



The curve above is for reference only.

单击下面可查看定价，库存，交付和生命周期等信息

[>>MDD\(辰达行\)](#)