

FEATURES

- ▶ Industrial Standard SIP-7 Package
- ▶ I/O Isolation 1000 VDC
- ▶ Operating Ambient Temp. Range -40°C to +85°C
- ▶ For Semi-regulated Type : MA03 Series


PRODUCT OVERVIEW

The MINMAX MAU300 series is a range of 2W DC/DC converters in a small SIP Package featuring an I/O-isolation of 1000VDC. An excellent efficiency allows an operating temperature range of -40°C to +85°C.

These converters offer an economical solution for many applications where a voltage has to be isolated i.e for noise reduction, ground loop elimination, digital interfaces or for board level power distribution with isolated voltages.

Model Selection Guide

Model Number	Input Voltage (Range) VDC	Output Voltage VDC	Output Current		Input Current		Load Regulation % (max.)	Max. capacitive Load μF	Efficiency (typ.)
			Max.	Min.	@Max. Load	@No Load			@Max. Load
			mA	mA	mA(typ.)	mA(typ.)			%
MAU301	5 (4.5 ~ 5.5)	3.3	500	10	452	60	11	470	73
MAU302		5	400	8	526		11		76
MAU303		12	165	3	495		7		80
MAU304		15	133	2.5	499		7		80
MAU305		±5	±200	±4	519		10	77	
MAU306		±12	±83	±1.5	504		7	390#	79
MAU307		±15	±66	±1	501		7	79	
MAU311	12 (10.8 ~ 13.2)	3.3	500	10	185	30	8	470	74
MAU312		5	400	8	212		8		78
MAU313		12	165	3	200		5		82
MAU314		15	133	2.5	200		5		83
MAU315		±5	±200	±4	210		8	79	
MAU316		±12	±83	±1.5	201		5	390#	82
MAU317		±15	±66	±1	200		5	82	
MAU321	24 (21.6 ~ 26.4)	3.3	500	10	92	15	8	470	74
MAU322		5	400	8	108		8		77
MAU323		12	165	3	101		5		81
MAU324		15	133	2.5	101		5		82
MAU325		±5	±200	±4	105		8	79	
MAU326		±12	±83	±1.5	102		5	390#	81
MAU327		±15	±66	±1	100		5	82	

For each output

Input Specifications

Parameter	Model	Min.	Typ.	Max.	Unit
Input Voltage Range	5V Input Models	4.5	5	5.5	VDC
	12V Input Models	10.8	12	13.2	
	24V Input Models	21.6	24	26.4	
Input Surge Voltage (1 sec. max.)	5V Input Models	-0.7	---	9	VDC
	12V Input Models	-0.7	---	18	
	24V Input Models	-0.7	---	30	
Input Filter	All Models	Internal Pi Type			

Output Specifications

Parameter	Conditions	Min.	Typ.	Max.	Unit
Output Voltage Accuracy		---	±1.0	±3.0	%Vnom.
Output Voltage Balance	Dual Output, Balanced Loads	---	±0.1	±1.0	%
Line Regulation	For Vin Change of 1%	---	±1.2	±1.5	%
Load Regulation	Io=20% to 100%	See Model Selection Guide			
Ripple & Noise	0-20 MHz Bandwidth	---	100	150	mV _{P-P}
Temperature Coefficient		---	±0.01	±0.02	%/°C
Short Circuit Protection	0.5 Second Max., Automatic Recovery				

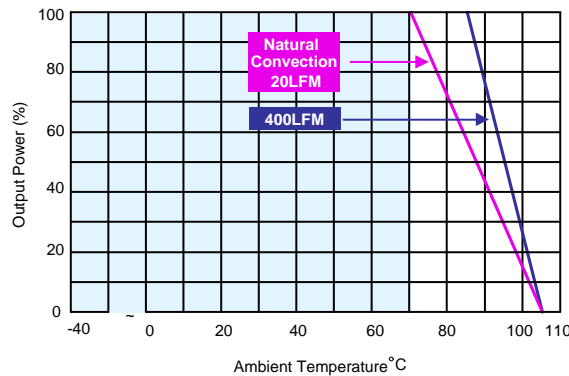
General Specifications

Parameter	Conditions	Min.	Typ.	Max.	Unit
I/O Isolation Voltage	60 Seconds	1000	---	---	VDC
	1 Second	1200	---	---	VDC
I/O Isolation Resistance	500 VDC	1000	---	---	MΩ
I/O Isolation Capacitance	100KHz, 1V	---	80	120	pF
Switching Frequency		50	80	100	KHz
MTBF (calculated)	MIL-HDBK-217F@25°C, Ground Benign	2,000,000			Hours

Environmental Specifications

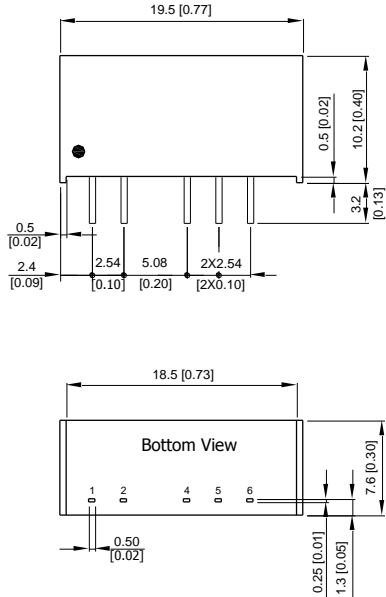
Parameter	Conditions	Min.	Max.	Unit
Operating Ambient Temperature Range (See Power Derating Curve)	Natural Convection	-40	+85	°C
Case Temperature		---	+90	°C
Storage Temperature Range		-50	+125	°C
Humidity (non condensing)		---	95	% rel. H
Cooling	Natural Convection			
Lead Temperature (1.5mm from case for 10Sec.)		---	260	°C

Power Derating Curve



Notes

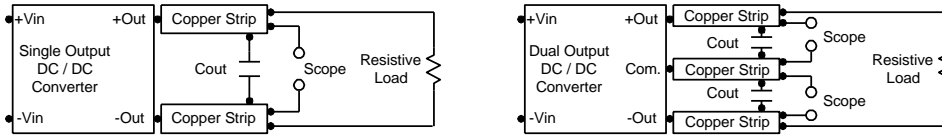
- 1 Specifications typical at Ta=+25°C, resistive load, nominal input voltage and rated output current unless otherwise noted.
- 2 These power converters require a minimum output loading to maintain specified regulation, operation under no-load conditions will not damage these modules; however they may not meet all specifications listed.
- 3 We recommend to protect the converter by a slow blow fuse in the input supply line.
- 4 Other input and output voltage may be available, please contact factory.
- 5 That "natural convection" is about 20LFM but is not equal to still air (0 LFM).
- 6 Specifications are subject to change without notice.

Package Specifications																			
<div style="border: 1px solid #ccc; padding: 10px;"> <p>Mechanical Dimensions</p>  </div>	<p>Pin Connections</p> <table border="1" style="width: 100%; border-collapse: collapse; text-align: center;"> <thead> <tr> <th>Pin</th> <th>Single Output</th> <th>Dual Output</th> </tr> </thead> <tbody> <tr> <td>1</td> <td>+Vin</td> <td>+Vin</td> </tr> <tr> <td>2</td> <td>-Vin</td> <td>-Vin</td> </tr> <tr> <td>4</td> <td>-Vout</td> <td>-Vout</td> </tr> <tr> <td>5</td> <td>No Pin</td> <td>Common</td> </tr> <tr> <td>6</td> <td>+Vout</td> <td>+Vout</td> </tr> </tbody> </table> <ul style="list-style-type: none"> ▶ All dimensions in mm (inches) ▶ Tolerance: X.X±0.25 (X.XX±0.01) X.XX±0.13 (X.XXX±0.005) ▶ Pins ±0.05(±0.002) 	Pin	Single Output	Dual Output	1	+Vin	+Vin	2	-Vin	-Vin	4	-Vout	-Vout	5	No Pin	Common	6	+Vout	+Vout
Pin	Single Output	Dual Output																	
1	+Vin	+Vin																	
2	-Vin	-Vin																	
4	-Vout	-Vout																	
5	No Pin	Common																	
6	+Vout	+Vout																	
Physical Characteristics																			
Case Size	: 19.5x7.6x10.2mm (0.77x0.30x0.40 inches)																		
Case Material	: Non-Conductive Black Plastic (flammability to UL 94V-0 rated)																		
Pin Material	: Alloy 42																		
Weight	: 2.7g																		

Test Setup

Peak-to-Peak Output Noise Measurement Test

Use a Cout 0.33 μ F ceramic capacitor. Scope measurement should be made by using a BNC socket, measurement bandwidth is 0-20 MHz. Position the load between 50 mm and 75 mm from the DC/DC Converter.



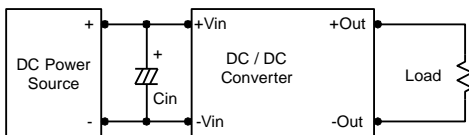
Technical Notes

Maximum Capacitive Load

The MAU300 series has limitation of maximum connected capacitance at the output. The power module may be operated in current limiting mode during start-up, affecting the ramp-up and the startup time. For optimum performance we recommend 390 μ F maximum capacitive load for dual outputs and 470 μ F capacitive load for single outputs. The maximum capacitance can be found in the data sheet.

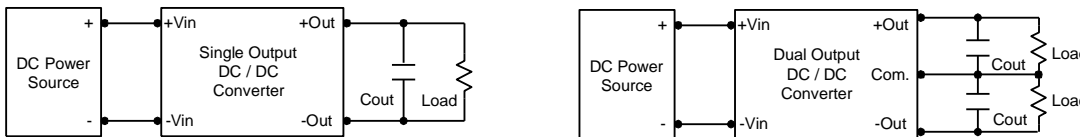
Input Source Impedance

The power module should be connected to a low ac-impedance input source. Highly inductive source impedances can affect the stability of the power module. In applications where power is supplied over long lines and output loading is high, it may be necessary to use a capacitor at the input to ensure startup. Capacitor mounted close to the power module helps ensure stability of the unit, it is comended to use a good quality low Equivalent Series Resistance (ESR < 1.0 Ω at 100 KHz) capacitor of a 2.2 μ F for the 5V input devices, a 1.0 μ F for the 12V input devices and a 0.47 μ F for the 24V devices.



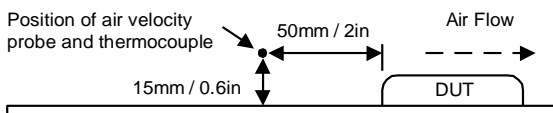
Output Ripple Reduction

A good quality low ESR capacitor placed as close as practicable across the load will give the best ripple and noise performance. To reduce output ripple, it is recommended to use 1.5 μ F capacitors at the output.



Thermal Considerations

Many conditions affect the thermal performance of the power module, such as orientation, airflow over the module and board spacing. To avoid exceeding the maximum temperature rating of the components inside the power module, the case temperature must be kept below 90°C. The derating curves are determined from measurements obtained in a test setup.



单击下面可查看定价，库存，交付和生命周期等信息

[>>MINMAX](#)