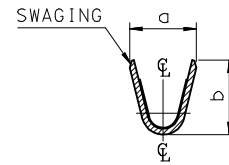
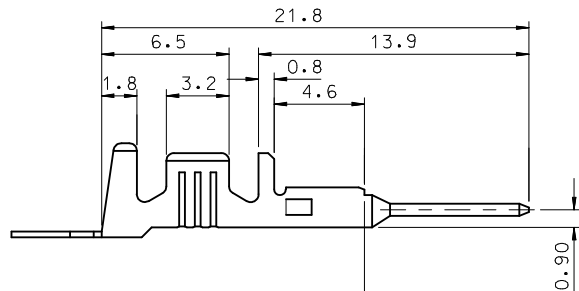
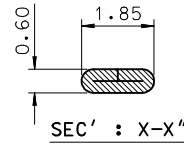


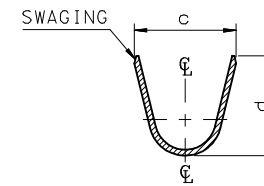
ISOMETRIC VIEW

NOTES.

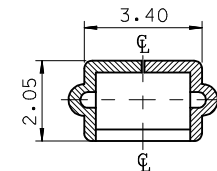
1. MATERIAL : Ⓢ BRASS, PRE-TIN PLATED
2. FINISH : 0.8~1.8 μ m, Tin(Sn) plating overall
0.3~0.8 μ m, Copper(Cu) plating
3. PRODUCT SPECIFICATION : PS-35150-001, PS-35180-002
PS-35180-003, PS-35524-001
4. CRIMPING SPECIFICATION : CS-35745-001
5. RECOMMENDED LENGTH OF WIRE STRIP IS 4.0~4.8mm



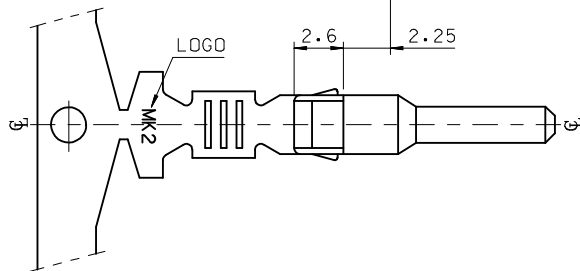
SEC' : X-X''



SEC' : Y-Y''



SEC' : W-W''



MATERIAL NO	ENG. No.	AWG	a	b	c	d	PITCH 'P'
357450210	35745-0210	#18-#14	3.4	3.8	5.2	4.8	12.0
357450110	35745-0110	#22-#20	2.85	2.8	4.2	4.0	10.6
357450410	35745-0410	#24	2.2	1.75	3.85	3.5	10.6

REVISED	EC NO: KOR2009-0151	2009/05/18
	TDRAWN: JHPARK01	2009/06/18
	CHKD: W. YANG	2009/07/01
	APPR: YUNSIKIM	2009/07/01
REV	DESCRIPTION	

QUALITY SYMBOLS	GENERAL TOLERANCES (UNLESS SPECIFIED)	
	mm	INCH
$\nabla=0$	4 PLACES \pm ---	\pm ---
$\nabla C=0$	3 PLACES \pm ---	\pm ---
	2 PLACES \pm 0.2	\pm ---
	1 PLACE \pm 0.3	\pm ---
	ANGULAR \pm 1°	
	DRAFT WHERE APPLICABLE MUST REMAIN WITHIN DIMENSIONS	

DIMENSION STYLE	
MM ONLY	
DRAWN BY	DATE
JS.KANG	1998/01/19
CHECKED BY	DATE
BK.CHOI	1998/01/19
APPROVED BY	DATE
CW.LEE	1998/01/19
MATERIAL NO.	
SEE TABLE	
SIZE	
A3	

SCALE	DESIGN UNITS	THIRD ANGLE PROJECTION
4:1	METRIC	\odot \triangle
TITLE		
.070 MALE TERMINAL (A-TYPE)		
MOLEX INCORPORATED		SHEET NO.
DOCUMENT NO.		1 OF 01
SD-35745-001		
THIS DRAWING CONTAINS INFORMATION THAT IS PROPRIETARY TO MOLEX INCORPORATED AND SHOULD NOT BE USED WITHOUT WRITTEN PERMISSION		

单击下面可查看定价，库存，交付和生命周期等信息

[>>MOLEX](#)