



**Part Number :** [348978200](#)

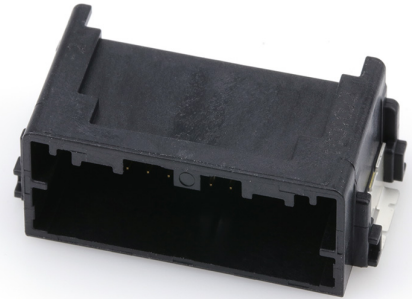
**Product Description :** Mini50 Unsealed Header, Right-Angle, SMT, Dual Row, 20 Circuits, Tin (Sn) Plating, Polarization Option A, Black, Tape and Reel

**Series Number :** 34897

**Status :** Active

**Product Category :** PCB Headers and Receptacles

**Packaging Alternative :** [348979200 \(Tube\)](#)



---

## Documents & Resources

### Drawings

[348978200\\_sd.pdf](#)

[PK-31301-786-001.pdf](#)

### 3D Models and Design Files

[348978200\\_stp.zip](#)

### Specifications

[AS-34791-020-CH-001.pdf](#)

[2065230000-AS-000.pdf](#)

[AS-34791-020-001.pdf](#)

[AS-34791-020-CH-001.pdf](#)

[AS-34791-020-FR-001.pdf](#)

[2065230000-AS-KR-000.pdf](#)

[PS-34791-020-001.pdf](#)


[2065230000-TS-000.pdf](#)

[347910020-TS-000.pdf](#)

---

## Product Environment Compliance

### Compliance

GADSL/IMDS	Compliant with Exemption 44; 33; 34
China RoHS	
EU ELV	Compliant per 2000/53/EC
Low-Halogen Status	Low-Halogen per IEC 61249-2-21

REACH SVHC	Not Contained per D(2024)6225-DC (07 Nov 2024)
EU RoHS	Compliant per EU 2015/863

### Multiple Part Product Compliance Statements

- Eu RoHS
- REACH SVHC
- Low-Halogen

### Multiple Part Industry Compliance Documents

- IPC 1752A Class C
- IPC 1752A Class D
- Molex Product Compliance Declaration
- IEC-62474
- chemSHERPA (xml)

### EU RoHS Certificate of Compliance

---

## Part Details

### General

Status	Active
Category	PCB Headers and Receptacles
Series	34897
Description	Mini50 Unsealed Header, Right-Angle, SMT, Dual Row, 20 Circuits, Tin (Sn) Plating, Polarization Option A, Black, Tape and Reel
Application	Automotive, Power, Signal, Wire-to-Board
Component Type	PCB Header
Product Name	Mini50
UPC	887191459301

### Electrical

Current - Maximum per Contact	4.0A (for reference only)
Voltage - Maximum	14V (typical operating)

### Physical

Breakaway	No
Circuits (Loaded)	20

Circuits (maximum)	20
Color - Resin	Black
First Mate / Last Break	No
Glow-Wire Capable	No
Guide to Mating Part	No
Keying to Mating Part	Yes
Lock to Mating Part	Yes
Material - Metal	Brass
Material - Plating Mating	Tin
Material - Plating Termination	Tin
Material - Resin	SPS
Net Weight	3.377/g
Number of Rows	2
Orientation	Right Angle
Packaging Type	Embossed Tape on Reel
PCB Retention	Yes
Pitch - Mating Interface	2.00mm
Polarized to Mating Part	Yes
Polarized to PCB	Yes
Temperature Range - Operating	-40° to +100°C
Termination Interface Style	Surface Mount

#### Solder Process Data

Lead-Free Process Capability	N/A
------------------------------	-----

---

#### Mates With / Use With

##### Mates with Part(s)

Description	Part Number
Mini50 Unsealed Dual Row Receptacles	<u>206523</u>
Mini50 Unsealed Dual Row Receptacle Housings	<u>34824</u>

---

This document was generated on Mar 08, 2025

单击下面可查看定价，库存，交付和生命周期等信息

[>>MOLEX](#)