

EXTreme Guardian Power Connector System 11.00mm Pitch with 80.0A Per Blade

molex

Exceed high-current and reliability requirements with EXTreme Guardian™ Power Connector System, providing EMI/RFI shielding with overmolded and non-overmolded cable harness options in vertical and right-angle configurations for design flexibility

Features and Benefits

SYSTEM WIDE

Current-dense design with high-current terminals and relatively small pitch

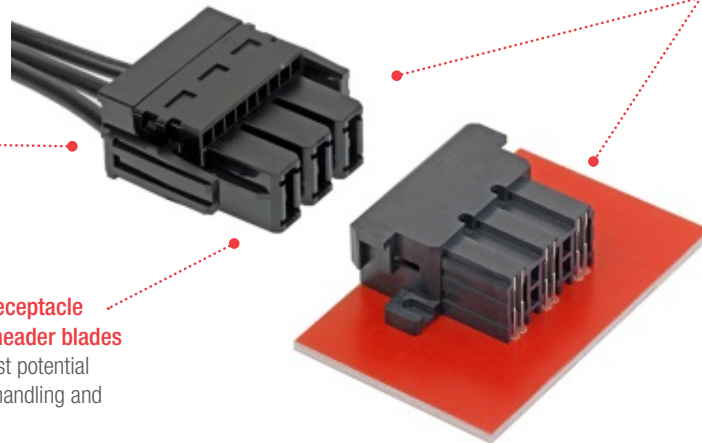
Provides one of the greatest current-density options amongst high-current wire-to-board connectors

Fully isolated receptacle terminals and header blades

Protection against potential damage during handling and mating

Relatively small 11.00mm pitch

Provides a very high 185.0A per linear inch in high-current applications



Non-Overmolded Power Assembly with Right-Angle Header (Series 151035)

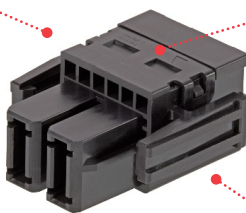
RECEPTACLE

Housings accept large gauge wire (up to 6 AWG)

Provides a large current-carrying capacity

Housing lead-in chambers

Provide terminal gatherability for easy mating to header



2-Circuit Receptacle (Series 151034)

Terminal position assurance (TPA) feature

Prevents backing out of terminals during mating and unmating

Positive locking housing

Ensures secure retention when receptacle and header are mated. Delivers an audible click to provide feedback that connector is fully mated

Through-hole solder retention design

Offers a robust, reliable manufacturing option

Compliant, press-fit tails available

Lowers processing costs. Allows for no max PCB thickness

Solder tails in multiple lengths

Support multiple PCB thicknesses

TERMINALS

Terminal interface with 6 independent points of contact

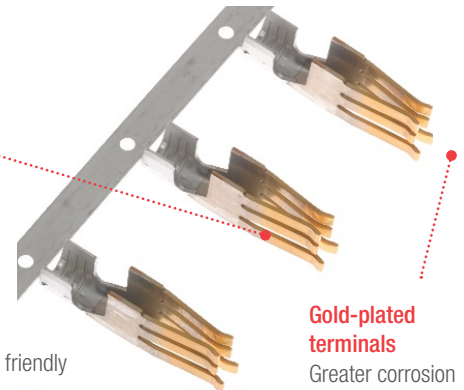
Offers redundant, secondary current paths for long-term performance and reliability

Low-halogen

Environmentally friendly

Gold-plated terminals

Greater corrosion resistance compared to other materials, which optimizes electrical conductivity

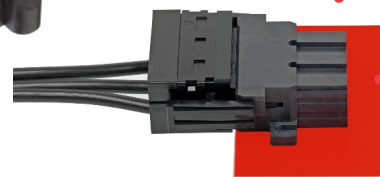


Power Terminal (Series 46819)

Locating pegs on housing

Enable accurate through-hole positioning to PCB

HEADER



Right-angle header has 2 contact blade lengths

Allows for varied mating sequences

Vertical PCB Header, 2 Circuits (Series 151053)

EXTreme Guardian Power Connector System 11.00mm Pitch with 80.0A Per Blade

molex

Applications

Data Communication Equipment

High-end servers

Telecommunication Equipment

Manufacturers

Cellular base stations

Hubs

Servers

Routers

Switches

Aerospace and Defense*

Power Supplies

Uninterruptable Power Supply (UPS)

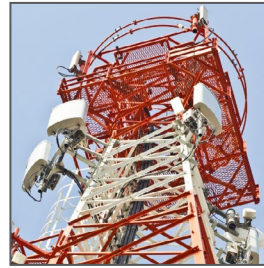
Other Markets

Solar

Medical

Electric vehicles

Commercial applications that require small formfactor interconnects delivering up to 200.0A



Base Tower



Servers

Specifications

REFERENCE INFORMATION

Packaging: Tray, Reel or Bulk

UL File No.: E29179

CSA File No.: LR19980 (1779070)

Mates With: PCB Headers

(Series 46817, 151035, 151053) mate with

Overmolded Cable Assemblies

(Series 68790 or 111119)

Use With: Power Harness Crimp Receptacles

(Series 46818, 151034) use

High-Power Terminals (Series 46819) and

TPA Clips (Series 151076)

Designed In: Millimeters

RoHS: Yes

Halogen Free: Yes

Glow Wire Compliant: No

ELECTRICAL

Voltage (max.): 600V AC/DC

Current (max.): 80.0A per blade

Dielectric Withstanding Voltage: 2,200V AC

MECHANICAL

Contact Retention to Housing (average): 26.61N

Mating Force (max.): 36.60N

Unmating Force (max.): 34.39N

Durability (min.): 25 cycles

PHYSICAL

Housing: Polyester, 94V-0

Contact: Copper (Cu) Alloy

Plating:

Contact Area — Gold (Au)

Solder Tail Area — Tin (Sn)

Underplating — Nickel (Ni)

PCB Thickness (min.): 2.30/1.50mm

Operating Temperature: -40 to +105°C

EXTreme Guardian Power Connector System 11.00mm Pitch with 80.0A Per Blade



Ordering Information

PCB Headers (Series 46817, 151035, 151053)

Series No.	Orientation	Overmolded	PCB Thickness (mm)	Tail Length (mm)	PCB Termination Style	Circuits
46817	Right angle	Yes	2.30/1.50mm	3.86 or 4.69	Through hole	2 or 3
151035	Right angle	No		3.86	Through hole	2 to 6
151053	Vertical	No		N/A (press-fit tail)	Through hole, compliant pin	2 to 6

Power Crimp Receptacles (Series 151034)

Series No.	Overmolded	Circuits	Wire Gauge (AWG)
151034	No	2 to 6	6

High-Power Receptacle Terminals (Series 46819)

Series No.	Wire Gauge (AWG)	Plating
46819	6, 8, 10	Gold (Au)

Receptacle Harness Terminal Position Assurance (TPA) Clips (Series 151076)

Series No.	Circuits
151076	2, 3, 4, 5, 6

Power Cable Assemblies

Custom Product	Description
Contact Molex	EXTreme Guardian Power Cable Assemblies

www.molex.com/link/extremeguardian.html

Molex is a registered trademark of Molex, LLC in the United States of America and may be registered in other countries; all other trademarks listed herein belong to their respective owners.

单击下面可查看定价，库存，交付和生命周期等信息

[>>MOLEX](#)