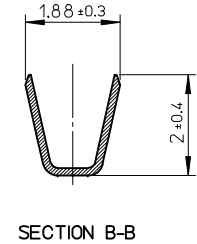
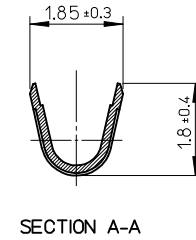
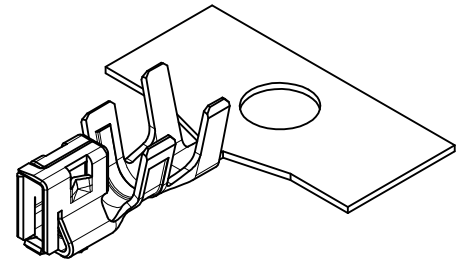
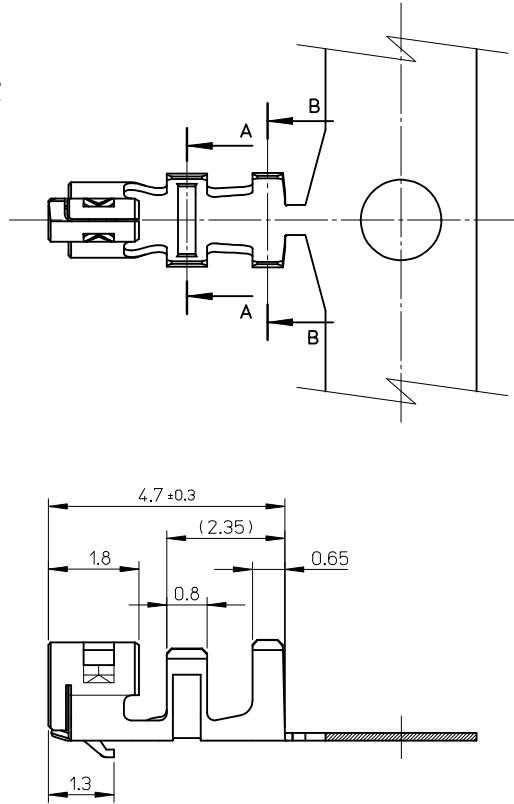
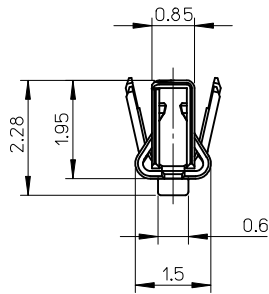


NOTES

1. Applicable housing: 502351-**00
2. Material: Phosphor bronze, pre-tinned, t=0.152



560085-0101	CHAIN
MATERIAL No.	FORM
SCALE 10:1	DESIGN UNITS METRIC
	THIRD ANGLE PROJECTION

REVISED EC NO: JTR2013-0056 DRWN: YAMAKI 2013/03/19 CHKD: HKOMATSU 2013/03/19 APPR: MAYAMOTO 2013/03/21	GENERAL TOLERANCES (UNLESS SPECIFIED)	DIMENSION STYLE MM ONLY
	10 UNDER ± 0.2	DRAWN BY DATE YAMAKI 2013/03/19
	10 OVER 30 UNDER ± 0.25	CHECKED BY DATE HKOMATSU 2013/03/19
	30 OVER ± 0.3	APPROVED BY DATE MAYAMOTO 2013/03/21
	ANGULAR ± 3 °	MATERIAL NO. SEE CHART
	DRAFT WHERE APPLICABLE MUST REMAIN WITHIN DIMENSIONS	SIZE A3

TITLE 2.0 WIRE TO BOARD CONN. CRIMP RECEPTACLE (DuraClik)	
molex	
DOCUMENT NO. SD-560085-001	SHEET NO. 1 OF 1

WIRE RANGE AWG: #22~#26
INSULATION RANGE Ø1.4 MAX.

单击下面可查看定价，库存，交付和生命周期等信息

[>>MOLEX](#)