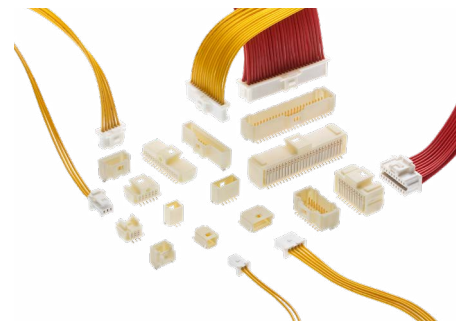


Pico-Clasp Wire-to-Board Connectors

molex

Pico-Clasp 1.00mm pitch Wire-to-Board connectors offer a variety of mating styles and orientations plated in Tin or Gold to provide design flexibility in a vast array of compact applications. Newly added 0.38 and 0.76µm Gold Plated Versions.

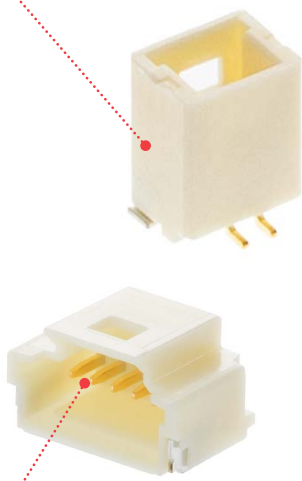


Pico-Clasp Connectors in Single and Dual-Row Configurations

Features and Advantages

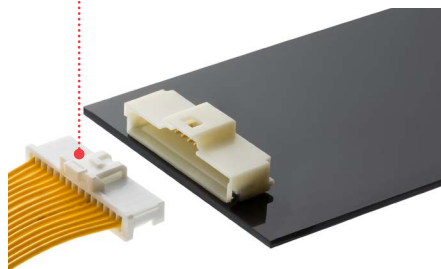
Inner Friction Lock

Space saving



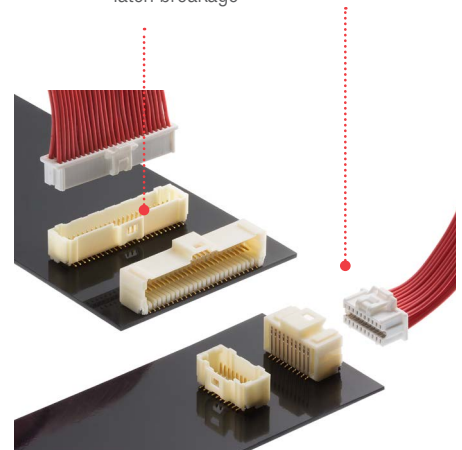
Inner Positive Lock

Secure mating retention.
Easy to mate and unmate



Inner Positive Lock

Offers secure mating retention with low mating and unmating forces. Prevents wire tangling and latch breakage



Thick gold plating options (0.1, 0.38 and 0.76µm)

Superior reliability and durability in harsh environments

Smallest pitch for positive lock Wire-to-Board crimp System

Provides space savings for mounting other components

SMT Mounting

Provides assembly and cost efficiencies. Automated assembly reduces manual labor processes

Applications

Consumer

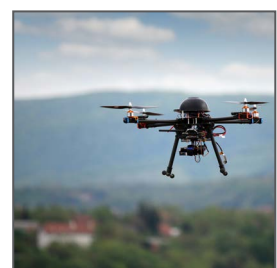
- Drone, UAV
- Smart meter
- Air conditioner
- TV
- Mobile POS Terminals
- Any other innovative electronic devices



Mobile POS Terminals



Servo Motor



Drone

Medical

- Patient monitoring



Patient Monitoring

Industrial

- Servo motor



Automotive module

Automotive

- Electronic module



Server

Telecommunications / Networking

- Server

Specifications

REFERENCE INFORMATION

Packaging: Terminals – Reel
Housings, Retainers – Bag
Headers – Emboss tape on reel
Designed In: Millimeters
RoHS: Yes
Glow Wire Compliant: No
Halogen Free: No

ELECTRICAL

Voltage (max.): 50V
Current (max.): See Derating information
Contact Resistance: 20 milliohms Max.
Dielectric Withstanding Voltage:
250V AC, 1 minute
Insulation Resistance:
100 Megaohms min.
AWG: 28, 30, 32
UL: 1571

MECHANICAL

Durability (min.): 30 cycles

PHYSICAL

Terminal: Phosphor Bronze
Housing: Nylon
Plating: Tin or 0.1/0.38/0.76µm Gold
Operating Temperature: -40 to +105°

Derating Information

SINGLE ROW

| AWG# | Amps[A] | | | |
|------|-----------|-----------|------------|------------|
| | 2-circuit | 5-circuit | 10-circuit | 15-circuit |
| 28 | 2.0 | 1.5 | 1.0 | 1.0 |
| 30 | 1.5 | 1.0 | 1.0 | 1.0 |
| 32 | 1.5 | 1.0 | 0.8 | 0.8 |

DUAL ROW

| AWG# | Amps[A] | |
|------|------------|------------|
| | 20-circuit | 50-circuit |
| 28 | 1.0 | |
| 30 | 1.0 | |
| 32 | 0.8 | |

- (1) Values are for REFERENCE ONLY.
- (2) Current deratings are based on not exceeding 30° Temperature.
- (3) PCB trace design can greatly affect temperature rise results in Wire-to-Board applications.
- (4) Data is for all circuits powered.
- (5) All data are interpolated information.

Ordering Information

| Circuit | 1 or 2 Rows | Plating | Locking: Friction/ Positive | Vertical | Right Angle | Crimp Housing | Terminal | AWG |
|----------------|-------------|-------------|---|------------------------|------------------------|---------------|-----------------------------|----------|
| 2 to 15 | Single | Tin | 2-5 circuit : Friction 6-15 : Positive Inner | 501331 | 501568 | 501330 | 501334 | 28 to 32 |
| | | 0.1µm Gold | | 504449 | 202396 | | 501193-3000 | |
| | | 0.38µm Gold | | 203556 | 203558 | | 501193-6000 | |
| | | 0.76µm Gold | | 203557 | 203559 | | 501193-5000 | |
| 3 to 5 | Single | Tin | Positive Outer | 501940 | 501953 | 501939 | 501334 | |
| | | 0.1µm Gold | | 501940 | 501953 | | 501193-3000 | |
| | | 0.38µm Gold | | 203560 | 203562 | | 501193-6000 | |
| | | 0.76µm Gold | | 203561 | 203563 | | 501193-5000 | |
| 20, 30, 40, 50 | Dual | 0.1µm Gold | Positive Inner | 501190 | 501571 | 501189 | 501193-3000 | |
| | | 0.38µm Gold | | 203564 | 203566 | | 501193-6000 | |
| | | 0.76µm Gold | | 203565 | 203567 | | 501193-5000 | |

单击下面可查看定价，库存，交付和生命周期等信息

[>>MOLEX](#)