



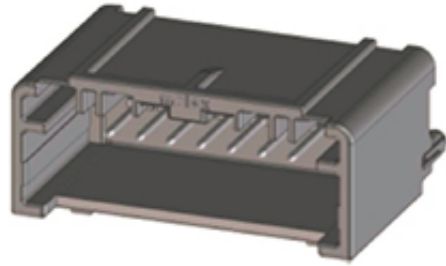
Part Number : [347928080](#)

Product Description : Mini50 Unsealed Vertical Header, Single Row, 8 Circuit, Polarization Option A, Black, Tape and Reel

Series Number : 34792

Status : Active

Product Category : PCB Headers and Receptacles



---

## Documents & Resources

### Drawings

[347928080\\_sd.pdf](#)

[PK-47799-0001-001.pdf](#)

### 3D Models and Design Files

[347928080\\_stp.zip](#)

### Specifications

[AS-34791-020-CH-001.pdf](#)

[347910020-TS-000.pdf](#)

---

## Product Environment Compliance

### Compliance

GADSL/IMDS	Compliant with Exemption 44; 33
China RoHS	
EU ELV	Compliant per 2000/53/EC
Low-Halogen Status	Low-Halogen per IEC 61249-2-21
REACH SVHC	Not Contained per D(2024)4144-DC (27 June 2024)
EU RoHS	Compliant per EU 2015/863

### Multiple Part Product Compliance Statements

- Eu RoHS
- REACH SVHC
- Low-Halogen

### Multiple Part Industry Compliance Documents

- IPC 1752A Class C

- IPC 1752A Class D
- Molex Product Compliance Declaration
- IEC-62474
- chemSHERPA (xml)

EU RoHS Certificate of Compliance

---

## Part Details

### General

Status	Active
Category	PCB Headers and Receptacles
Series	34792
Description	Mini50 Unsealed Vertical Header, Single Row, 8 Circuit, Polarization Option A, Black, Tape and Reel
Application	Automotive, Power, Signal, Wire-to-Board
Component Type	PCB Header
Product Name	Mini50
UPC	889056918718

### Electrical

Current - Maximum per Contact	4.0A (for reference only)
Voltage - Maximum	14V (typical operating)

### Physical

Breakaway	No
Circuits (Loaded)	8
Circuits (maximum)	8
Color - Resin	Black
First Mate / Last Break	No
Glow-Wire Capable	No
Guide to Mating Part	No
Keying to Mating Part	Yes
Lock to Mating Part	Yes
Material - Metal	Brass
Material - Plating Mating	Tin

Material - Plating Termination	Tin
Material - Resin	Polyester Alloy
Net Weight	1.500/g
Number of Rows	1
Orientation	Vertical
Packaging Type	Embossed Tape on Reel
PC Tail Length	2.90mm
PCB Locator	Yes
Pitch - Mating Interface	2.00mm
Polarized to Mating Part	Yes
Polarized to PCB	Yes
Temperature Range - Operating	-40° to +105°C
Termination Interface Style	Through Hole

---

## Mates With / Use With

### Mates with Part(s)

Description	Part Number
Mini50 Unsealed Receptacle Housings	<u>34791</u>

---

This document was generated on Nov 04, 2024

单击下面可查看定价，库存，交付和生命周期等信息

[>>MOLEX](#)