



ELECTRICAL MODEL REPORT

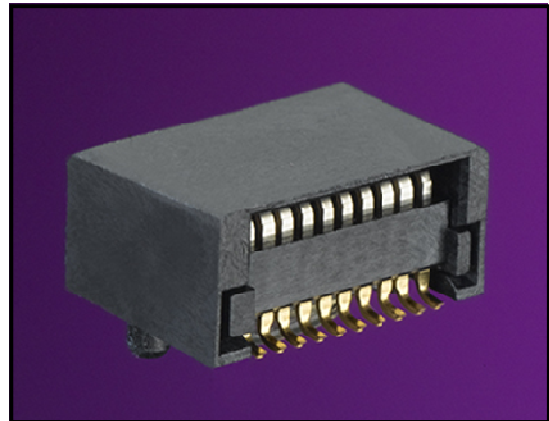
MODEL SUMMARY

This is an electrical model of the zSFP+ connector. This connector supports 10 Gbps Ethernet and 16 Gbps Fiber Channel applications with the ability to support 25/28 Gbps applications.

This model can be used as a standalone model for analysis of connector performance or with other models to complete a channel.

Further information regarding this connector product line and other related Molex zSFP+ products can be found at <http://www.molex.com/>.

zSFP+ Connector



APPLICABLE PART NUMBER(S): 170382

MODEL TYPE: S-parameter	MODEL FORMAT: Touchstone (*.sNp)
MODEL FILENAME: SP-170382-0001_revC.s8p	DATA FORMAT: Real/Imaginary
MODEL BASIS: Analytical 3-D field solution	MODEL SOURCE: Ansoft HFSS version 14.0
BANDWIDTH: DC - 40.96 GHz	RESOLUTION: 10 MHz steps
REFERENCE: 50 ohms	NUMBER OF POINTS: 4097 (4096 + 1 DC)
NUMBER OF CHANNELS: 2 differential	NUMBER OF PORTS: 8 single-ended
CHANNEL TYPE: Coupled pairs + reference	VALIDATION: TS-170382-0001
MODEL APPLICATION: Fibre Channel, Ethernet	DATA RATE: 28 Gbps

DISCLAIMERS:

Information contained in this document is simulated. Molex Incorporated does not guarantee the performance of the final product to the information provided in this document.

Molex does not represent, warrant or guarantee the accuracy of the information, expressly disclaims all warranties including the implied warranties of merchantability and fitness for particular purpose and shall not be liable for any damages whatsoever arising from use of, or inability to use, the information contained in this document or accompanying electronic file.

The user is responsible for verifying the results of their use of this information, and assumes all risk of doing or not doing so. Use of the electronic file evidences user's agreement to the above terms.

REVISION: C	ECN INFORMATION: EC No: UCP2012-3087 DATE: 03/19/2012	TITLE: Electrical Model Documentation zSFP+, Surface Mount MOLEX CONFIDENTIAL	SHEET No. 1 of 8
DOCUMENT NUMBER: EE-170382-0001	CREATED / REVISED BY: K. Balasubramanian	CHECKED BY: R. Benson	APPROVED BY: P. Casher

TEMPLATE FILENAME: SPM[SIZE_A](V.1).DOC



ELECTRICAL MODEL REPORT

MODEL DESCRIPTION

This model contains 2 differential pairs (and their associated grounds) arranged in a G-S-S-G format circuit board interfaces, which results in an 8-port, single-ended S-parameter matrix. Two power pins are not part of the ports. The signal path represented by the model consists of a surface-mount host card, and an edge card connector inserted into one side of the connector.

The electrical model was simulated using Ansoft HFSS in the Frequency domain. The frequency range of this simulation is from 0 GHz to 40.96 GHz. With Ansoft HFSS the DC values of the S-parameters are extrapolated from the lowest solved frequency (10 MHz).

CONDUCTOR TO PORT MAPPING TABLE

SIGNAL PATHS

Terminals (Host Board)	Ports (Host Board)	Ports (Edge Card)
12	1	2
13	3	4
18	5	6
19	7	8

REVISION: C	ECN INFORMATION: EC No: UCP2012-3087 DATE: 03/19/2012	TITLE: Electrical Model Documentation zSFP+, Surface Mount MOLEX CONFIDENTIAL	SHEET No. 2 of 8
DOCUMENT NUMBER: EE-170382-0001	CREATED / REVISED BY: K. Balasubramanian	CHECKED BY: R. Benson	APPROVED BY: P. Casher

TEMPLATE FILENAME: SPM[SIZE_A](V.1).DOC

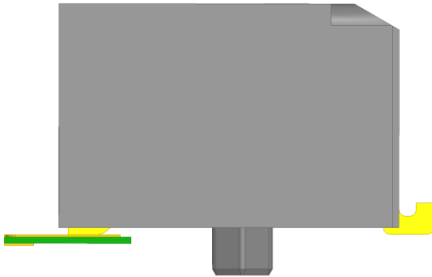


ELECTRICAL MODEL REPORT

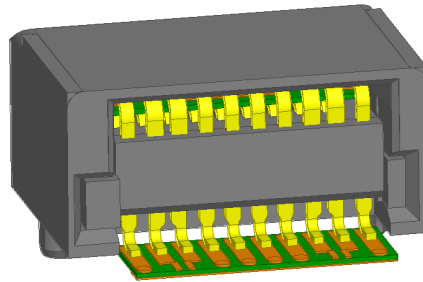
PART ILLUSTRATIONS

Connector

Side



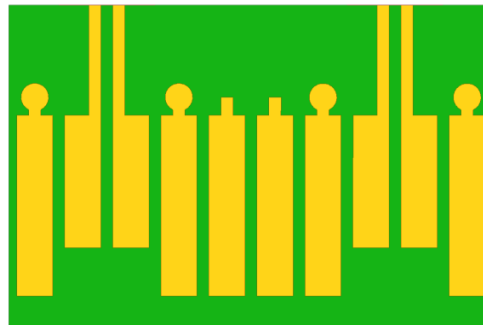
Perspective



Host Card



Edge Card



Host Board Construction Details

Thickness: 0.148mm
 Layers: 2 (Microstrip & Ground)
 Board Material: Dk=3.8, Df=0.015
 Copper: 1.5 oz. (.05mm)

Edge Card Pads

Pitch: 0.8 mm
 Ground: 3.0 x 0.6 mm
 Signal: 2.2 x 0.6 mm

REVISION: C	ECN INFORMATION: EC No: UCP2012-3087 DATE: 03/19/2012	TITLE: Electrical Model Documentation zSFP+, Surface Mount MOLEX CONFIDENTIAL	SHEET No. 3 of 8
DOCUMENT NUMBER: EE-170382-0001	CREATED / REVISED BY: K. Balasubramanian	CHECKED BY: R. Benson	APPROVED BY: P. Casher

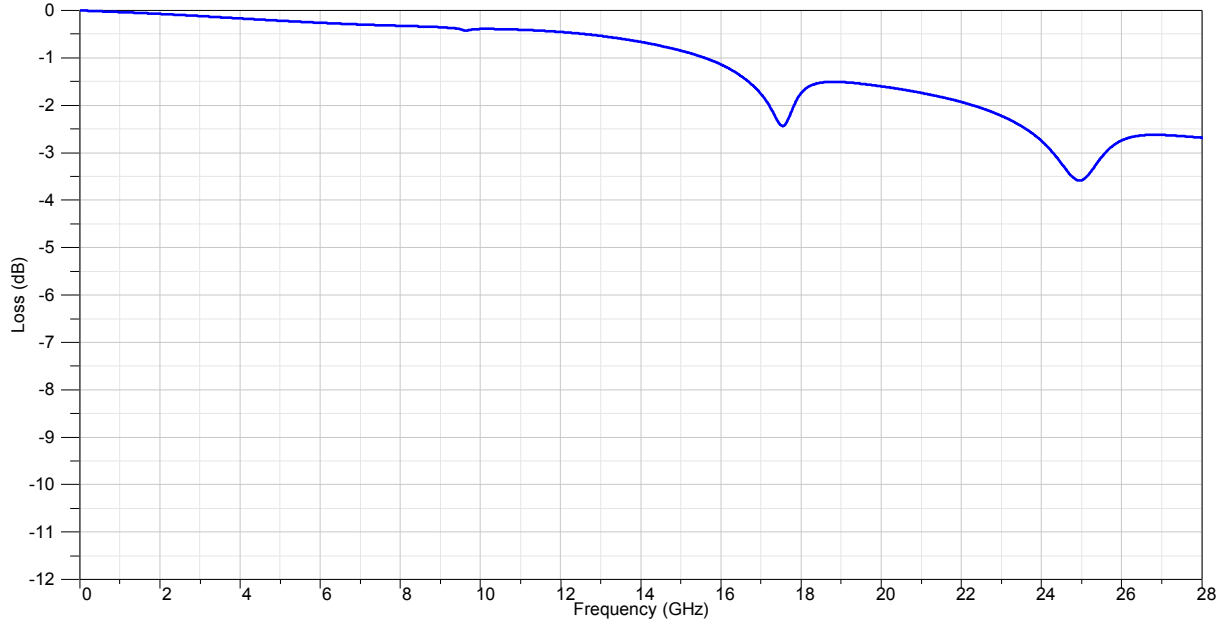
TEMPLATE FILENAME: SPM[SIZE_A](V.1).DOC



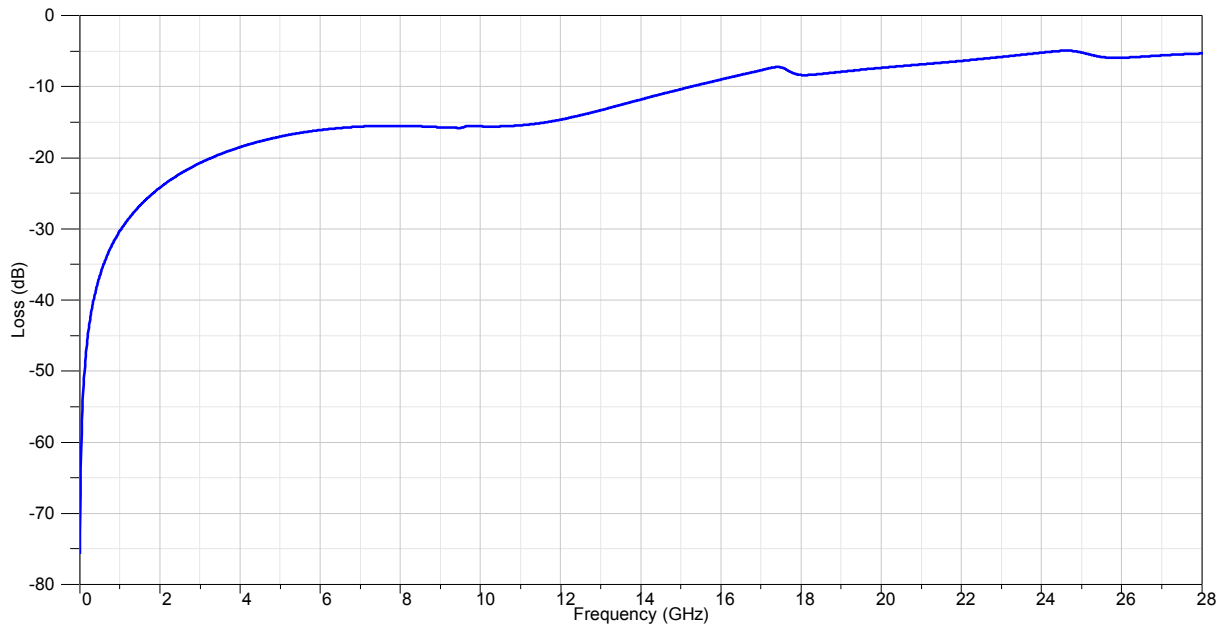
ELECTRICAL MODEL REPORT

REFERENCE RESULTS

Differential Insertion Loss



Differential Return Loss



REVISION: C	ECN INFORMATION: EC No: UCP2012-3087 DATE: 03/19/2012	TITLE: Electrical Model Documentation zSFP+, Surface Mount MOLEX CONFIDENTIAL	SHEET No. 4 of 8
DOCUMENT NUMBER: EE-170382-0001	CREATED / REVISED BY: K. Balasubramanian	CHECKED BY: R. Benson	APPROVED BY: P. Casher

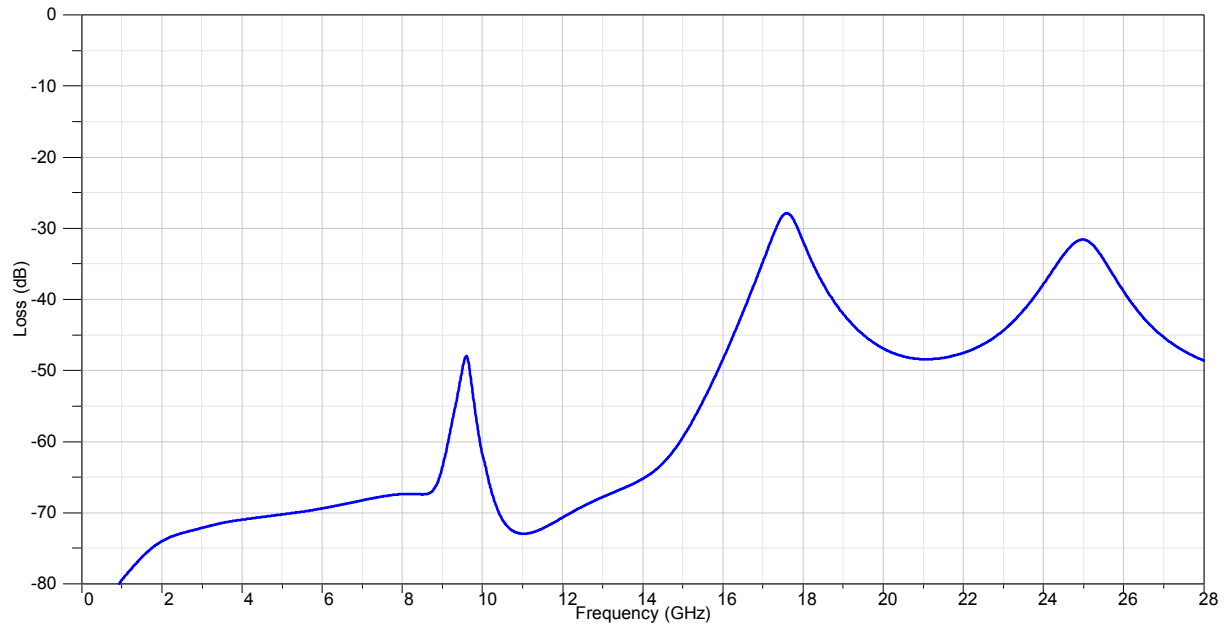
TEMPLATE FILENAME: SPM[SIZE_A](V.1).DOC



ELECTRICAL MODEL REPORT

REFERENCE RESULTS

Near-end Differential Crosstalk



REVISION: C	ECN INFORMATION: EC No: UCP2012-3087 DATE: 03/19/2012	TITLE: Electrical Model Documentation zSFP+, Surface Mount MOLEX CONFIDENTIAL	SHEET No. 5 of 8
DOCUMENT NUMBER: EE-170382-0001	CREATED / REVISED BY: K. Balasubramanian	CHECKED BY: R. Benson	APPROVED BY: P. Casher

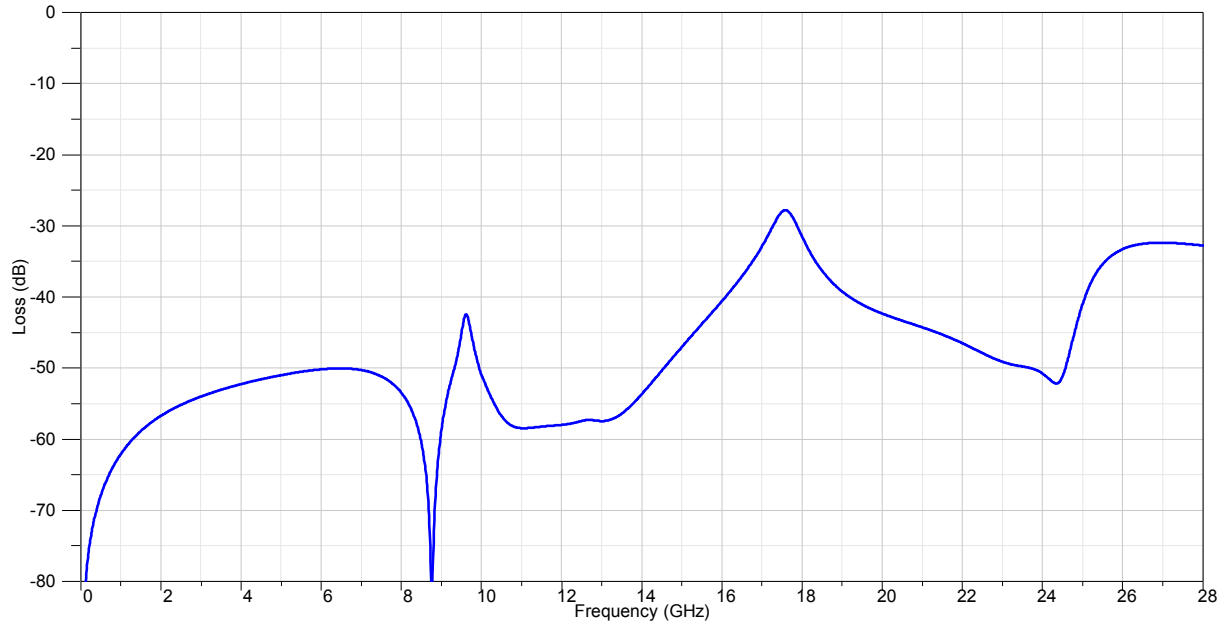
TEMPLATE FILENAME: SPM[SIZE_A](V.1).DOC



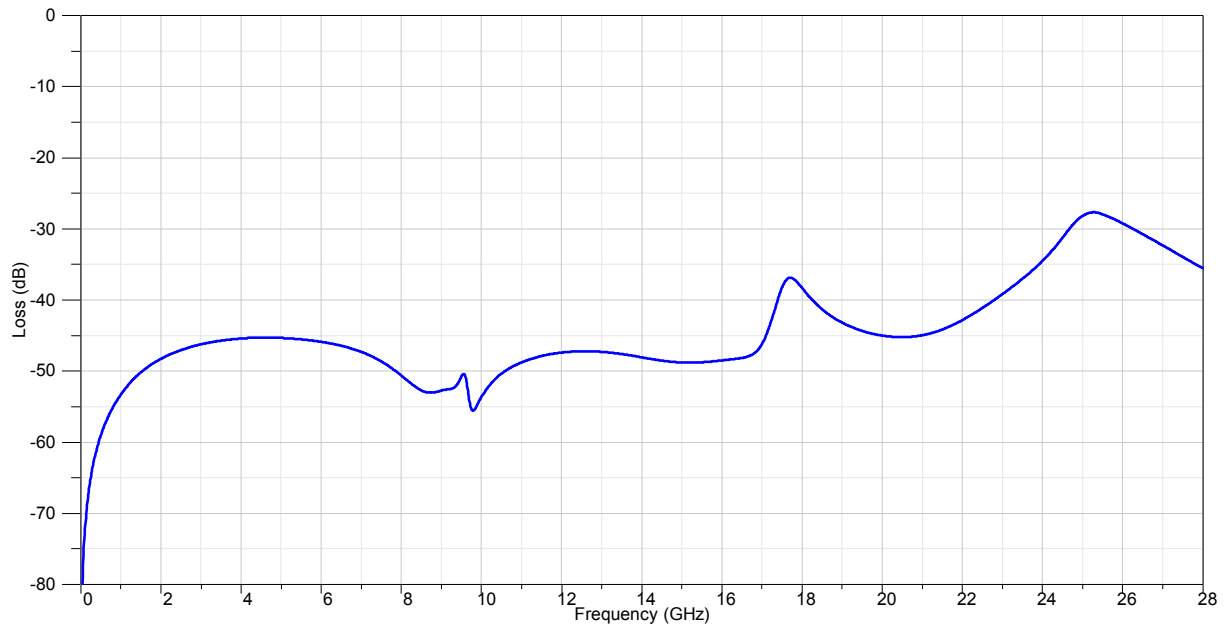
ELECTRICAL MODEL REPORT

REFERENCE RESULTS

Mode Conversion - Thru



Mode Conversion - Reflected



REVISION: C	ECN INFORMATION: EC No: UCP2012-3087 DATE: 03/19/2012	TITLE: Electrical Model Documentation zSFP+, Surface Mount MOLEX CONFIDENTIAL	SHEET No. 6 of 8
DOCUMENT NUMBER: EE-170382-0001	CREATED / REVISED BY: K. Balasubramanian	CHECKED BY: R. Benson	APPROVED BY: P. Casher

TEMPLATE FILENAME: SPM[SIZE_A](V.1).DOC

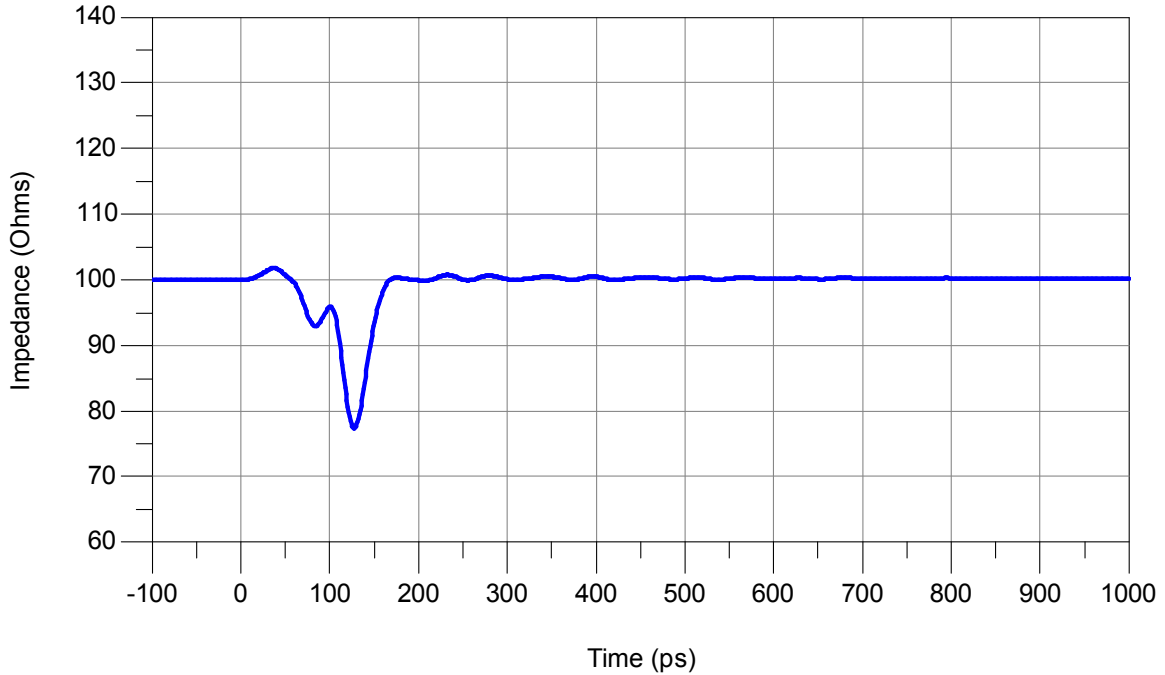


ELECTRICAL MODEL REPORT

REFERENCE RESULTS

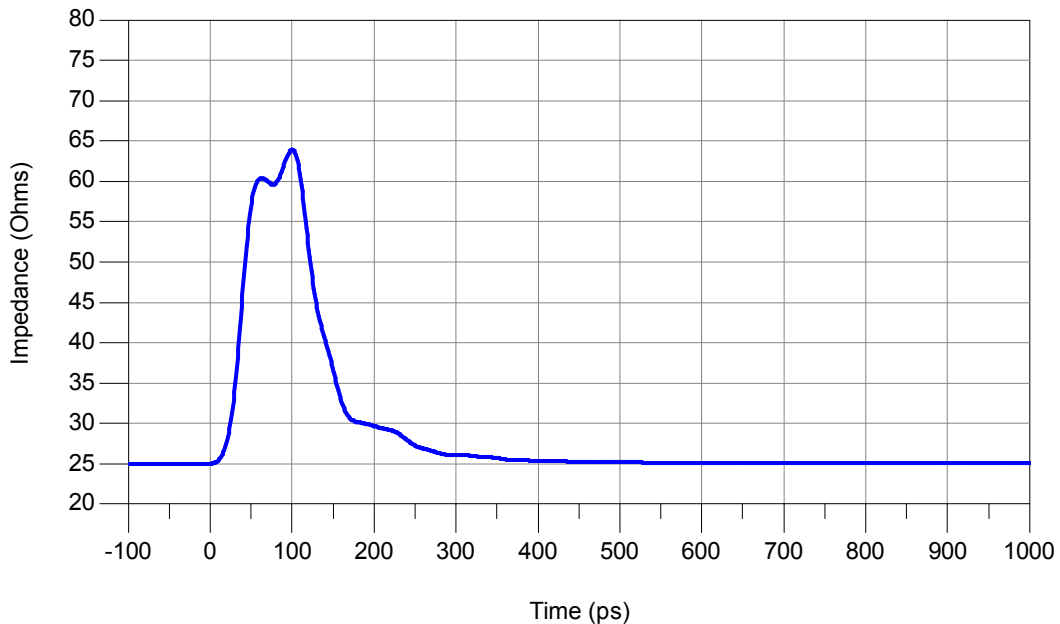
Differential TDR Response

- Rise-time of 18ps (20-80%), representative of 14.025Gbps applications



Common Mode TDR Response

- Rise-time of 18ps (20-80%), representative of 14.025Gbps applications



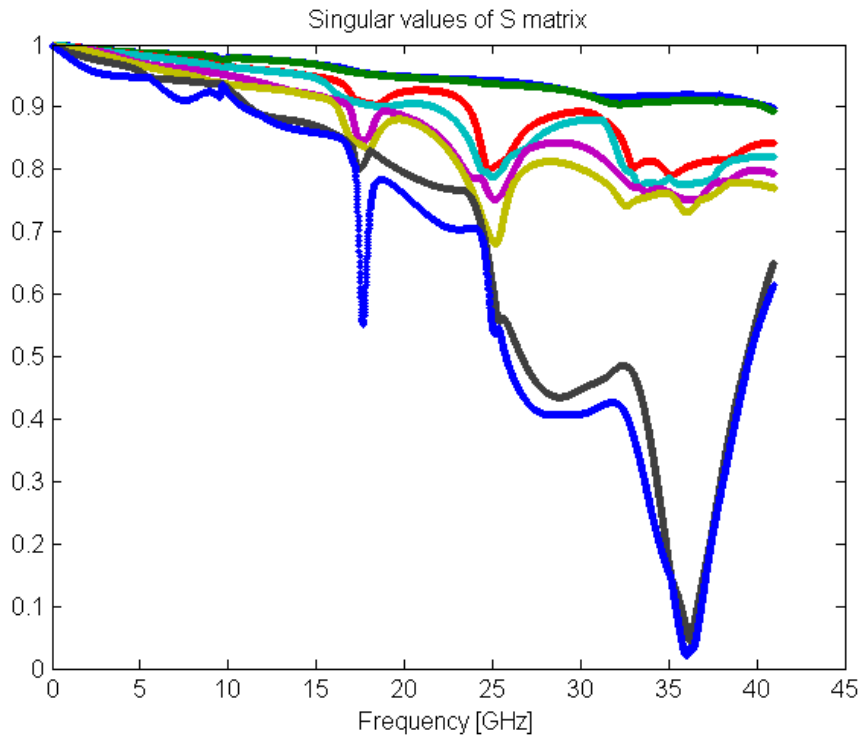
REVISION: C	ECN INFORMATION: EC No: UCP2012-3087 DATE: 03/19/2012	TITLE: Electrical Model Documentation zSFP+, Surface Mount MOLEX CONFIDENTIAL	SHEET No. 7 of 8
DOCUMENT NUMBER: EE-170382-0001	CREATED / REVISED BY: K. Balasubramanian	CHECKED BY: R. Benson	APPROVED BY: P. Casher

TEMPLATE FILENAME: SPM[SIZE_A](V.1).DOC



ELECTRICAL MODEL REPORT

Model Passivity



REVISION: C	ECN INFORMATION: EC No: UCP2012-3087 DATE: 03/19/2012	TITLE: Electrical Model Documentation zSFP+, Surface Mount MOLEX CONFIDENTIAL	SHEET No. 8 of 8
DOCUMENT NUMBER: EE-170382-0001	CREATED / REVISED BY: K. Balasubramanian	CHECKED BY: R. Benson	APPROVED BY: P. Casher

TEMPLATE FILENAME: SPM[SIZE_A](V.1).DOC

单击下面可查看定价，库存，交付和生命周期等信息

[>>MOLEX](#)