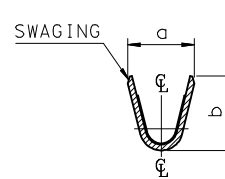
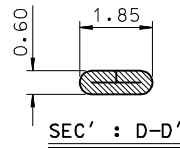
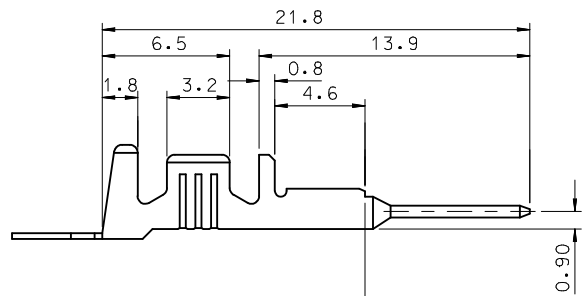


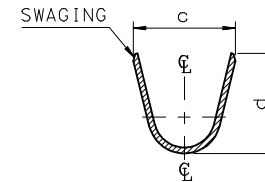
ISOMETRIC VIEW

NOTES.

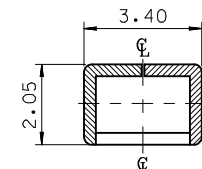
1. MATERIAL : Ⓟ BRASS, PRE-TIN PLATED
2. FINISH : 0.8~1.8μm, Tin(Sn) plating overall
0.3~0.8μm, Copper(Cu) plating
3. PRODUCT SPECIFICATION : PS-35150-001, PS-35180-002
PS-35180-003, PS-35524-001
4. CRIMPING SPECIFICATION : CS-35745-001
5. RECOMMENDED LENGTH OF WIRE STRIP IS 4.0~4.8mm



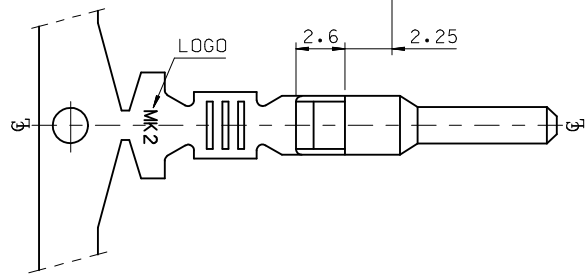
SEC' : X-X"



SEC' : Y-Y"



SEC' : C-C"



MATERIAL NO	ENG. No.	AWG	a	b	c	d	PITCH 'P'
357470210	35747-0210	#18-#14	3.4	3.8	5.2	4.8	12.0
357470110	35747-0110	#22-#20	2.85	2.8	4.2	4.0	10.6
357470410	35747-0410	#24	2.2	1.75	3.85	3.5	10.6

REVISED	EC NO: KOR2009-0151	2009/05/18
	DRWN: JHPARK01	2009/06/18
	CHKD:	
	APPR: YUNSIKKIM	2009/07/01

REV	DESCRIPTION
▽=0	QUALITY SYMBOLS
∇=0	

GENERAL TOLERANCES (UNLESS SPECIFIED)	
	mm
4 PLACES	± 0.3
3 PLACES	± 0.2
2 PLACES	± 0.1
1 PLACE	± 0.15
ANGULAR ± 1°	
DRAFT WHERE APPLICABLE MUST REMAIN WITHIN DIMENSIONS	

DIMENSION STYLE	
MM ONLY	
DRAWN BY	DATE
JS.KANG	1998/01/19
CHECKED BY	DATE
BK.CHOI	1998/01/19
APPROVED BY	DATE
CW.LEE	1998/01/19
MATERIAL NO.	
SEE TABLE	

SCALE	DESIGN UNITS	THIRD ANGLE PROJECTION
4:1	METRIC	
TITLE		
.070 MALE TERMINAL (B-TYPE)		
MOLEX INCORPORATED		SHEET NO.
DOCUMENT NO.		1 OF 01
THIS DRAWING CONTAINS INFORMATION THAT IS PROPRIETARY TO MOLEX INCORPORATED AND SHOULD NOT BE USED WITHOUT WRITTEN PERMISSION		

单击下面可查看定价，库存，交付和生命周期等信息

[>>MOLEX](#)