

MSKSEMI

SEMICONDUCTOR



ESD



TVS



TSS



MOV



GDT



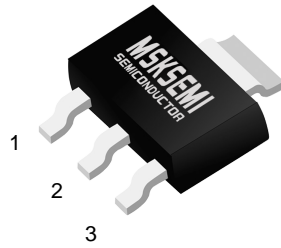
PLED

Product data sheet

www.msksemi.com

SOT-223

- 1. BASE
- 2. COLLECTOR
- 3. EMITTER



PNP Transistors

■ Features

- Collector Current Capability $I_C = -4A$
- Collector Emitter Voltage $V_{CE0} = -140V$
- Very low saturation voltages

Absolute Maximum Ratings $T_a = 25^\circ C$

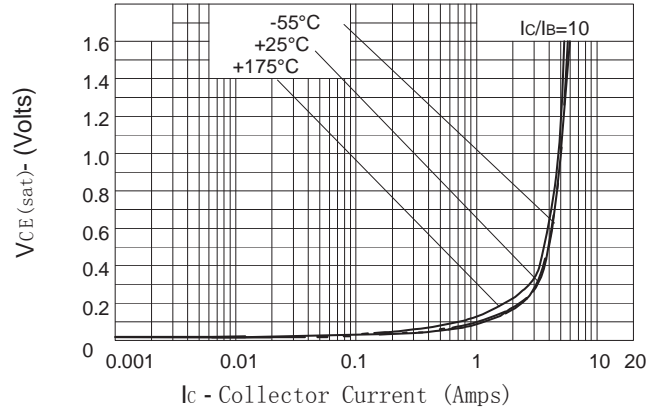
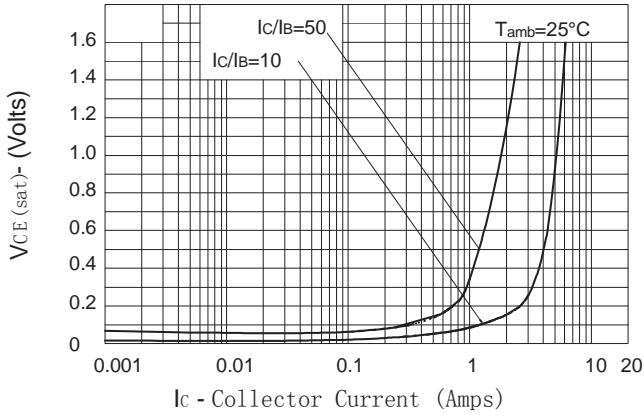
Parameter	Symbol	Rating	Unit
Collector - Base Voltage	V_{CB0}	-180	V
Collector - Emitter Voltage	V_{CE0}	-140	
Emitter - Base Voltage	V_{EB0}	-6	
Collector Current - Continuous	I_C	-4	A
Peak Pulse Current	I_{CM}	-10	
Collector Power Dissipation	P_C	3	W
Thermal Resistance, Junction to Ambient (Note 1)	$R_{\theta JA}$	78	$^\circ C/W$
Operating and Storage Temperature Range	T_J, T_{stg}	-55 to 150	$^\circ C$

Note 1: For a device mounted with the collector lead on 25mm x 25mm 1oz copper that is on a single-sided 1.6mm FR4 PCB; device is measured under still air conditions whilst operating in steady-state.

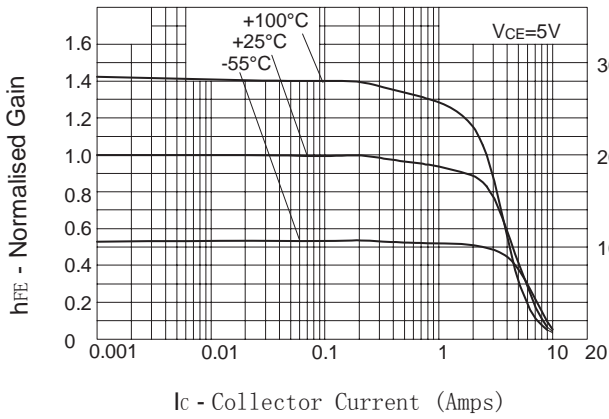
Electrical Characteristics $T_a = 25^\circ C$

Parameter	Symbol	Test Conditions	Min	Typ	Max	Unit
Collector- base breakdown voltage	V_{CB0}	$I_C = -100 \mu A, I_E = 0$	-180			V
Collector- emitter breakdown voltage	V_{CER}	$I_C = -1 \mu A, R_B \leq 1k\Omega$	-180			
Collector- emitter breakdown voltage	V_{CE0}	$I_C = -10 mA, I_B = 0$	-140			
Emitter - base breakdown voltage	V_{EB0}	$I_E = -100 \mu A, I_C = 0$	-6			
Collector-base cut-off current	I_{CBO}	$V_{CB} = -150 V, I_E = 0$			-50	nA
		$V_{CB} = -150 V, I_E = 0, T_a = 100^\circ C$			-1	μA
Collector cut-off current $R < 1k\Omega$	I_{CER}	$V_{CE} = -150 V, I_E = 0$			-50	nA
		$V_{CE} = -150 V, I_E = 0, T_a = 100^\circ C$			-1	μA
Emitter cut-off current	I_{EBO}	$V_{EB} = -6V, I_C = 0$			-10	nA
Collector-emitter saturation voltage	$V_{CE(sat)}$	$I_C = -100 mA, I_B = -5 mA$			-60	mV
		$I_C = -500 mA, I_B = -50 mA$			-120	
		$I_C = -1 A, I_B = -100 mA$			-150	
		$I_C = -3 A, I_B = -300 mA$			-370	
Base - emitter saturation voltage	$V_{BE(sat)}$	$I_C = -3 A, I_B = -300 mA$			-1110	
Base - emitter turn-on voltage	$V_{BE(on)}$	$V_{CE} = -5V, I_C = -3A$			-950	
DC current gain	h_{FE}	$V_{CE} = -5V, I_C = -10 mA$	100			
		$V_{CE} = -5V, I_C = -1 A$	100		300	
		$V_{CE} = -5V, I_C = -3 A$	75			
		$V_{CE} = -5V, I_C = -10 A$		10		
Switching Times	t_{on}	$I_C = -1A, I_{B1} = -100 mA$		68		ns
	t_{off}	$I_{B2} = 100 mA, V_{CC} = -50V$		1030		
Collector output capacitance	C_{ob}	$V_{CB} = -20V, f = 1 MHz$		40		pF
Transition frequency	f_T	$V_{CE} = -10V, I_C = -100 mA, f = 50 MHz$		110		MHz

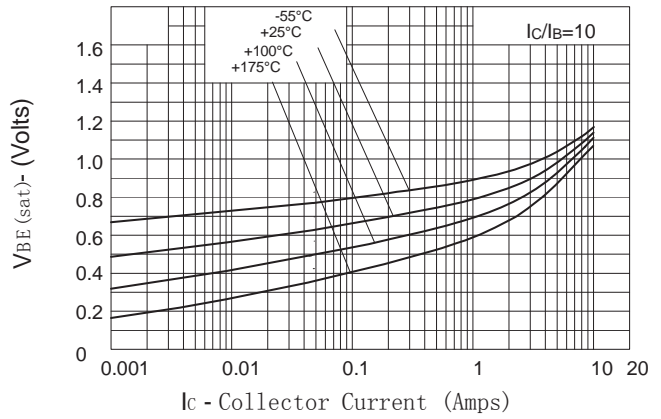
Typical Characteristics



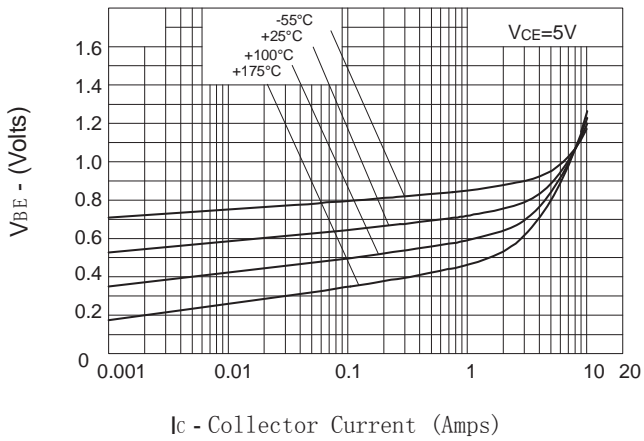
$V_{CE(sat)}$ v I_C



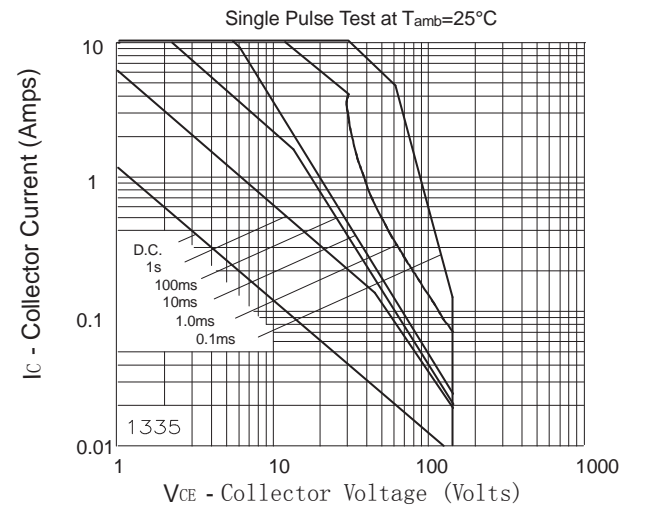
$V_{CE(sat)}$ v I_C



h_{FE} v I_C



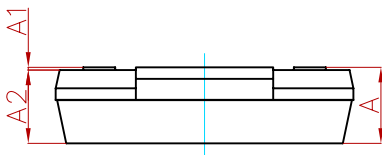
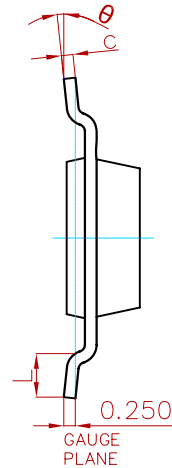
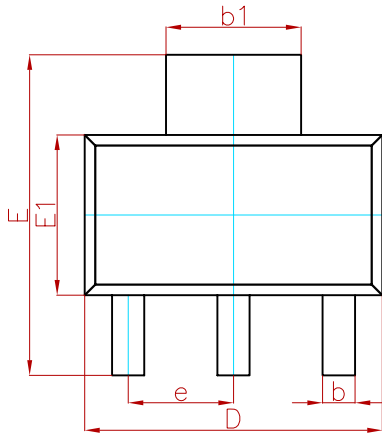
$V_{BE(sat)}$ v I_C



$V_{BE(on)}$ v I_C

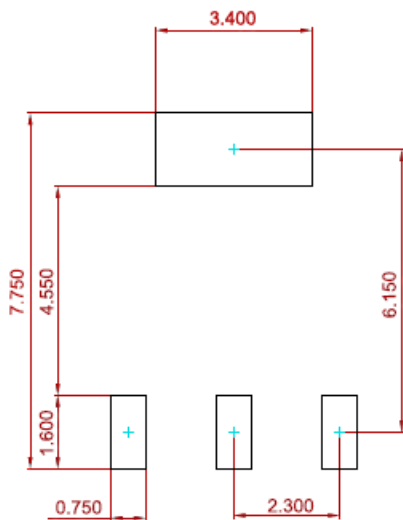
Safe Operating Area

PACKAGE MECHANICAL DATA



Symbol	Dimensions In Millimeters		Dimensions In Inches	
	Min.	Max.	Min.	Max.
A	—	1.800	—	0.071
A1	0.020	0.100	0.001	0.004
A2	1.500	1.700	0.059	0.067
b	0.660	0.840	0.026	0.033
b1	2.900	3.100	0.114	0.122
c	0.230	0.350	0.009	0.014
D	6.300	6.700	0.248	0.264
E	6.700	7.300	0.264	0.287
E1	3.300	3.700	0.130	0.146
e	2.300(BSC)		0.091(BSC)	
L	0.750	—	0.030	—
θ	0°	10°	0°	10°

Suggested Pad Layout



Note:

1. Controlling dimension: in millimeters.
2. General tolerance: ±0.050mm.
3. The pad layout is for reference purposes only.

REEL SPECIFICATION

P/N	PKG	QTY
FZT955-MS	SOT-223	1000

Attention

- Any and all MSKSEMI Semiconductor products described or contained herein do not have specifications that can handle applications that require extremely high levels of reliability, such as life-support systems, aircraft's control systems, or other applications whose failure can be reasonably expected to result in serious physical and/or material damage. Consult with your MSKSEMI Semiconductor representative nearest you before using any MSKSEMI Semiconductor products described or contained herein in such applications.
- MSKSEMI Semiconductor assumes no responsibility for equipment failures that result from using products at values that exceed, even momentarily, rated values (such as maximum ratings, operating condition ranges, or other parameters) listed in products specifications of any and all MSKSEMI Semiconductor products described or contained herein.
- Specifications of any and all MSKSEMI Semiconductor products described or contained herein stipulate the performance, characteristics, and functions of the described products in the independent state, and are not guarantees of the performance, characteristics, and functions of the described products as mounted in the customer's products or equipment. To verify symptoms and states that cannot be evaluated in an independent device, the customer should always evaluate and test devices mounted in the customer's products or equipment.
- MSKSEMI Semiconductor strives to supply high-quality high-reliability products. However, any and all semiconductor products fail with some probability. It is possible that these probabilistic failures could give rise to accidents or events that could endanger human lives, that could give rise to smoke or fire, or that could cause damage to other property. When designing equipment, adopt safety measures so that these kinds of accidents or events cannot occur. Such measures include but are not limited to protective circuits and error prevention circuits for safe design, redundant design, and structural design.
- In the event that any or all MSKSEMI Semiconductor products (including technical data, services) described or contained herein are controlled under any of applicable local export control laws and regulations, such products must not be exported without obtaining the export license from the authorities concerned in accordance with the above law.
- No part of this publication may be reproduced or transmitted in any form or by any means, electronic or mechanical, including photocopying and recording, or any information storage or retrieval system, or otherwise, without the prior written permission of MSKSEMI Semiconductor.
- Information (including circuit diagrams and circuit parameters) herein is for example only ; it is not guaranteed for volume production. MSKSEMI Semiconductor believes information herein is accurate and reliable, but no guarantees are made or implied regarding its use or any infringement of intellectual property rights or other rights of third parties.
- Any and all information described or contained herein are subject to change without notice due to product/technology improvement, etc. When designing equipment, refer to the "Delivery Specification" for the MSKSEMI Semiconductor product that you intend to use.

单击下面可查看定价，库存，交付和生命周期等信息

[>>MSKSEMI\(美森科\)](#)