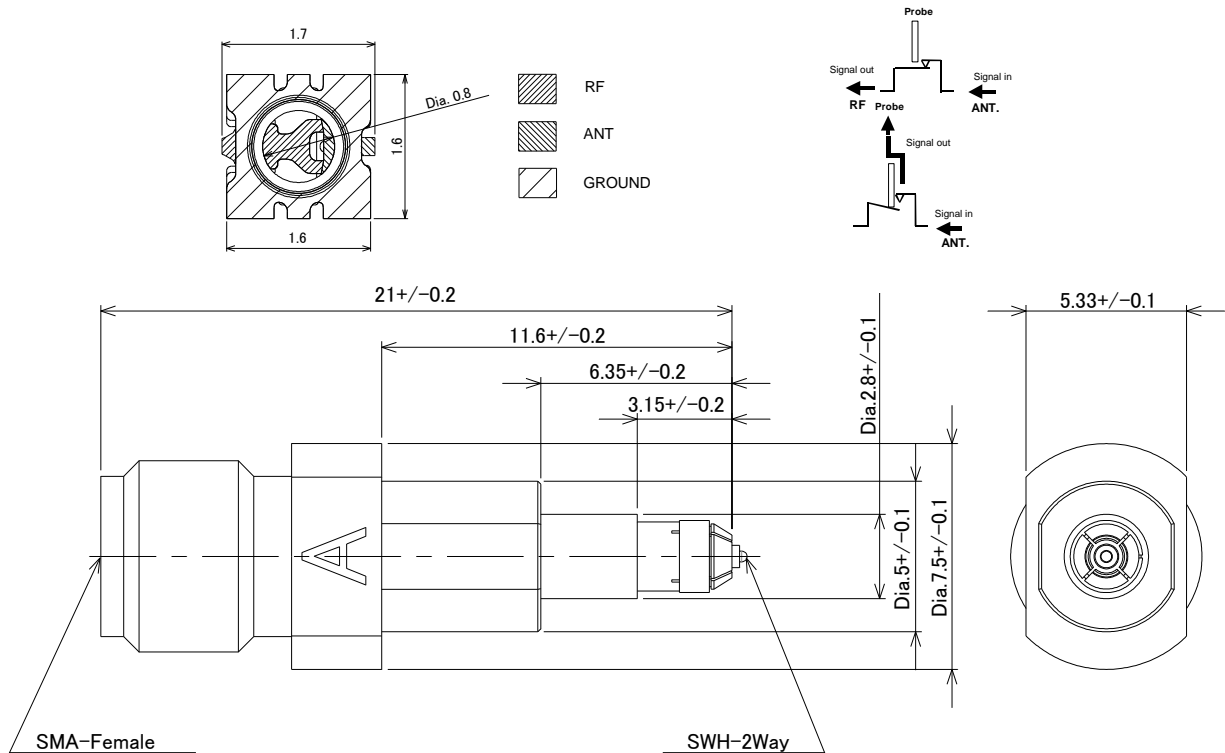


SPECIFICATION

1. MECHANICAL

This probe MM126525 is needed to measure Antenna side performance for manual measurement.

A>



Scale: Free
 Tolerances Unless
 Otherwise Specified: +/-0.2
 Unit: mm

Figure.1 Construction

2. RATING:

Item	Specification
Voltage Rating	30V r.m.s. maximum
Nominal Frequency Range	DC to 6GHz
Nominal Impedance	50Ω
Temperature Rating	-40°C to +85°C
Insulation Resistance	500 MΩ minimum
Withstanding Voltage	No evidence of breakdown
Initial Contact Resistance (without conductor resistance)	70 m Ω max.
Voltage Standing Wave Ratio (V.S.W.R.)	Meet the requirements of following spec. 1.5 max. (DC ~3GHz) 1.6 max. (3GHz ~6GHz)
Insertion loss	0.5dB max. (DC ~3GHz) 0.9dB max. (3GHz ~6GHz)
Durability	2K cycles
Engage and disengage force. (Probe side only)	a. Engagement 30N maximum b. Disengagement 5N minimum 20 N maximum

单击下面可查看定价，库存，交付和生命周期等信息

[>>Murata\(村田\)](#)