

- *Ideal Front-End Filter for European Wireless Receivers*
- *Low-Loss, Coupled-Resonator Quartz Design*
- *Simple External Impedance Matching*
- *Wide Bandwidth for Multi-Channel Receiver Application*
- *Complies with Directive 2002/95/EC (RoHS)*

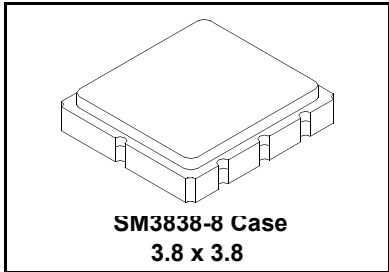


The RF1400D is a low-loss, compact, and economical surface-acoustic-wave (SAW) filter designed to provide front-end selectivity in 433.92 MHz receivers. Receiver designs using this filter include superhet with 10.7 MHz or 500 kHz IF, direct conversion and superregen. Wider bandwidth for channelized receiver applications.

This coupled-resonator filter (CRF) uses selective null placement to provide suppression, typically greater than 40 dB, of the LO and image spurious responses of superhet receivers with 10.7 MHz IF. Murata's advanced SAW design and fabrication technology is utilized to achieve high performance and very low loss with simple external impedance matching.

**RF1400D**

**433.92 MHz  
SAW Filter**



| Characteristic                                       | Sym  | Notes                 | Minimum                             | Typical                        | Maximum | Units               |
|--|--|-----------------------|-------------------------------------|--------------------------------|---------|---------------------|
| Center Frequency at 25°C Absolute Frequency          | $f_c$  | 1, 2, 3               |                                     | 433.92                         |         | MHz                 |
| Insertion Loss                                       | IL   | 1, 3                  |                                     | 2.0                            | 3.0     | dB                  |
| 3 dB Bandwidth                                       | BW <sub>3</sub>  | 1, 2, 3               | 1000                                | 1150                           |         | kHz                 |
| Rejection  |  |                       |                                     |                                |         |                     |
| 10 - 414 MHz   |  | 1, 3                  | 40                                  | 50                             |         | dB                  |
| 414 - 425 MHz  |  |                       | 30                                  | 40                             |         |                     |
| 426 - 432 MHz  |  |                       | 16                                  | 20                             |         |                     |
| 435 - 442 MHz  |  |                       | 10                                  | 15                             |         |                     |
| 442 - 550 MHz  |  |                       | 26                                  | 30                             |         |                     |
| 550 - 1000 MHz                                       |  |                       | 45                                  | 50                             |         |                     |
| Frequency Temperature Coefficient                    | FTC  |                       |                                     | 0.032                          |         | ppm/°C <sup>2</sup> |
| Frequency Aging Absolute Value during the First Year | fA   | 5                     |                                     | ≤10                            |         | ppm/yr              |
| Impedance @ $f_c$                                    | Input $Z_{IN} = R_{IN}    C_{IN}$<br>Output $Z_{OUT} = R_{OUT}    C_{OUT}$ | $Z_{IN}$<br>$Z_{OUT}$ | 1                                   | 279Ω    4.1pf<br>279Ω    4.1pf |         |                     |
| Lid Symbolization (Y=year WW=week D=day of week)     | 490 // YWWS  |                       |                                     |                                |         |                     |
| Standard Reel Quantity                               | Reel Size 7 Inch<br>Reel Size 13 Inch                                      | 9                     | 500 Pieces/Reel<br>3000 Pieces/Reel |                                |         |                     |

**CAUTION: Electrostatic Sensitive Device. Observe precautions for handling.**

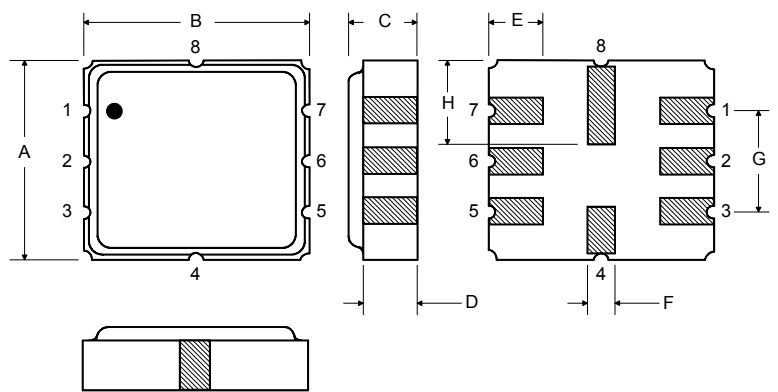
**NOTES:**

1. Unless noted otherwise, all measurements are made with the filter installed in the specified test fixture which is connected to a 50 Ω test system with VSWR ≤ 1.2:1. The test fixture L and C are adjusted for minimum insertion loss at the filter center frequency,  $f_c$ . Note that insertion loss and bandwidth and passband shape are dependent on the impedance matching component values and quality.
2. The frequency  $f_c$  is defined as the midpoint between the 3dB frequencies.
3. Where noted specifications apply over the entire specified operating temperature range of -40°C to +105°C.
4. The turnover temperature,  $T_o$ , is the temperature of maximum (or turnover) frequency,  $f_o$ . The nominal frequency at any case temperature,  $T_c$ , may be calculated from:  $f = f_o [1 - FTC (T_o - T_c)^2]$ .
5. Frequency aging is the change in  $f_c$  with time and is specified at +65°C or less. Aging may exceed the specification for prolonged temperatures above +65°C. Typically, aging is greatest the first year after manufacture, decreasing significantly in subsequent years.
6. The design, manufacturing process, and specifications of this device are subject to change.
7. One or more of the following U.S. Patents apply: 4,54,488, 4,616,197, and others pending.
8. All equipment designs utilizing this product must be approved by the appropriate government agency prior to manufacture or sale.
9. Tape and Reel Standard Per ANSI / EIA 481.

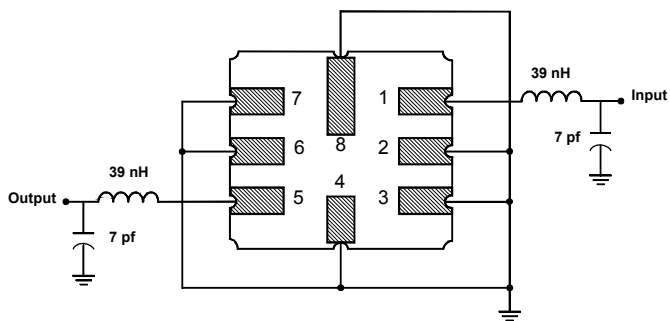
| Rating                | Value                        | Units  |
|-----------------------|------------------------------|--------|
| Input Power Level     | 10                           | dBm    |
| DC Voltage            | 12                           | VDC    |
| Storage Temperature   | -40 to +125                  | °C     |
| Operable Temperature  | -40 to +125                  | °C     |
| Soldering Temperature | (10 seconds / 5 cycles max.) | 260 °C |

### Electrical Connections

| Pin | Connection    |
|-----|---------------|
| 1   | Input         |
| 2   | Input Ground  |
| 3   | Ground        |
| 4   | Case Ground   |
| 5   | Output        |
| 6   | Output Ground |
| 7   | Ground        |
| 8   | Case Ground   |

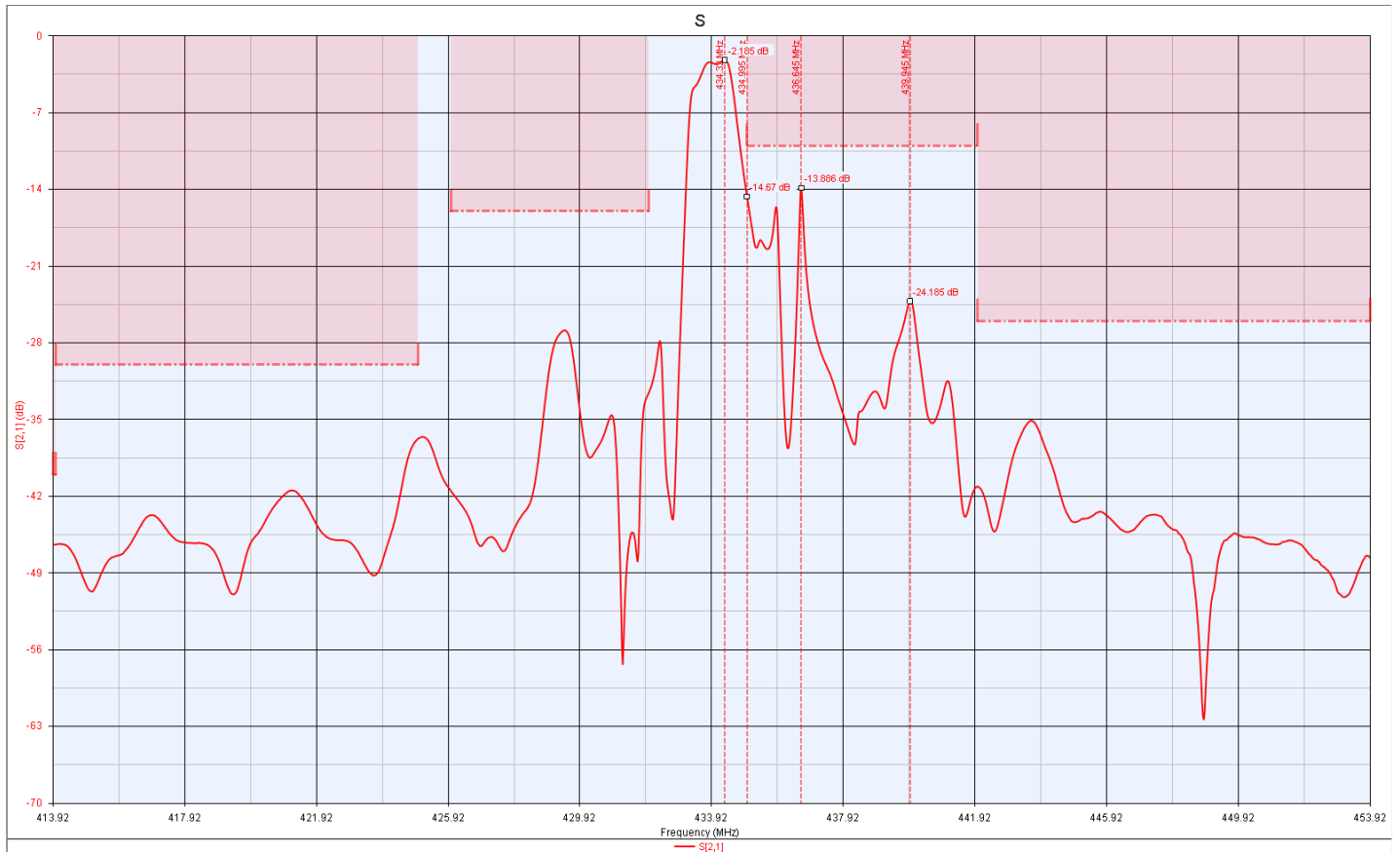
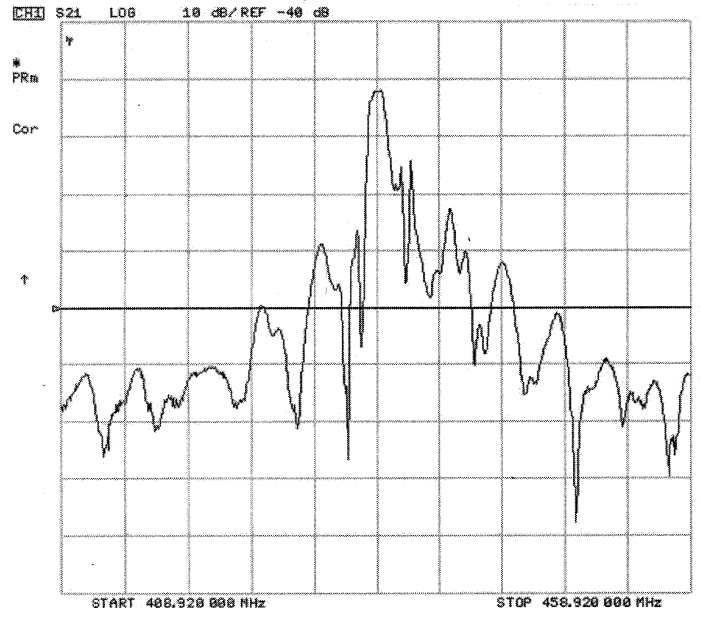


### Matching Circuit to 50Ω



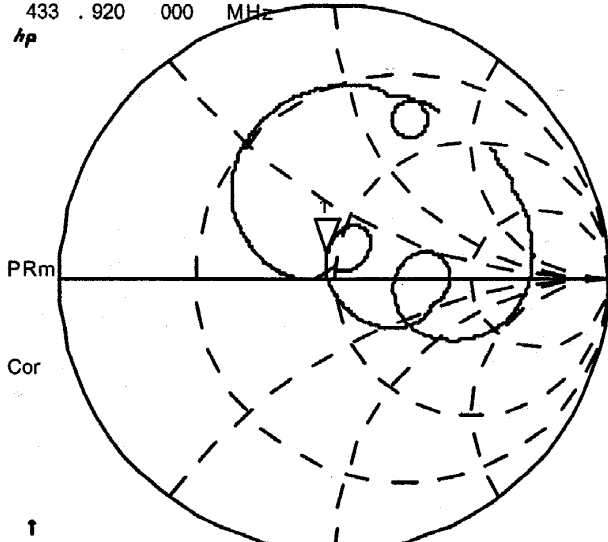
### Case Dimensions

| Dimension | mm   |      |      | Inches |       |       |
|-----------|------|------|------|--------|-------|-------|
|           | Min  | Nom  | Max  | Min    | Nom   | Max   |
| A         | 3.6  | 3.8  | 4.0  | 0.14   | 0.15  | 0.16  |
| B         | 3.6  | 3.8  | 4.0  | 0.14   | 0.15  | 0.16  |
| C         | 1.00 | 1.20 | 1.40 | 0.04   | 0.05  | 0.055 |
| D         | 0.95 | 1.10 | 1.25 | 0.033  | 0.043 | 0.05  |
| E         | 0.90 | 1.0  | 1.10 | 0.035  | 0.04  | 0.043 |
| F         | 0.50 | 0.6  | 0.70 | 0.020  | 0.024 | 0.028 |
| G         | 2.39 | 2.54 | 2.69 | 0.090  | 0.100 | 0.110 |
| H         | 1.40 | 1.75 | 2.05 | 0.055  | 0.069 | 0.080 |



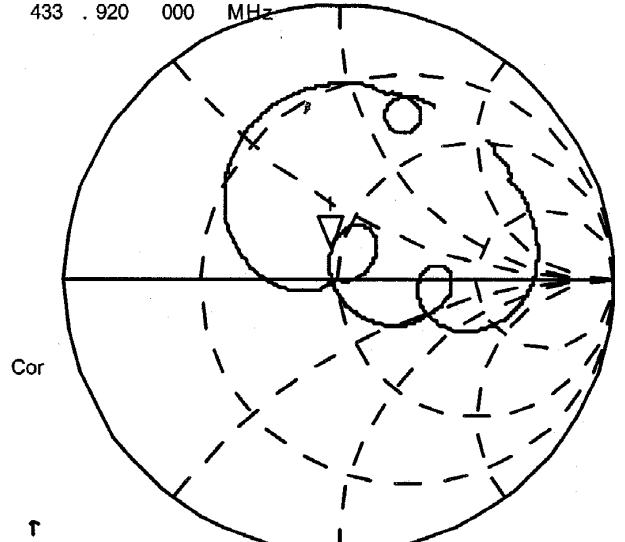
5 Feb 2004 17:17:52

CH1 S11 1 UFS  
1: 46 . 521 9. 5156 3. 4902 nH  
433 . 920 000 MHz  
hp



↑  
CENTR 433 . 920 MHz SPAN 5. 000 MHz

CH3 S22 1 UFS  
1: 46 . 305 10 . 367 3. 8025 nH  
433 . 920 000 MHz



↑  
CENTR 433 . 920 MHz SPAN 5. 000 MHz

单击下面可查看定价，库存，交付和生命周期等信息

[>>Murata\(村田\)](#)