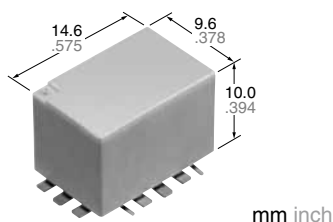


8 GHz max. capable,
150 W carrying power (at 2 GHz),
compact SMD type,
50Ω impedance and 1 Form C relays

RN RELAYS (ARN)



RoHS compliant

FEATURES

- 150 W carrying power possible (at 2GHz)
- Excellent high frequency characteristics, 6 GHz capable
Low insertion loss: Max. 0.12 dB (at 2GHz)
- Miniature size and Surface mount (SMD) type
L: 9.6 × W: 14.6 × H: 10 mm
L: .378 × W: .575 × H: .394 inch

TYPICAL APPLICATIONS

- Base stations market
Mobile phone, transmitter section of terrestrial digital base stations, etc.
 - Measuring equipment market
Spectrum analyzer and oscilloscope, etc.
 - Other applications
High-frequency amp switching in wireless devices, etc.
- If you consider using applications with low level loads or with high frequency switching, please consult us.

Protective construction: Flux-resistant type

ORDERING INFORMATION

ARN A

Contact arrangement

- 1: 1 Form C standard contact type
- 3: 1 Form C reversed contact type (single side stable type only)

Operating function

- 0: Single side stable type
- 2: 2 coil latching type

Terminal shape

- A: Surface mount terminal

Coil voltage, DC*

4H: 4.5 V, 12: 12 V, 24: 24 V (H=0.5)

* For 28 V type, please consult us.

Packing style

- Nil: Carton packing
- X: Tape and reel packing (picked from 1 pin side)
- Z: Tape and reel packing (picked from 13 pin side)

TYPES

1. Single side stable type

Contact arrangement	Rated voltage	Part No.		Standard packing	
		Standard contact type	Reversed contact type	Carton	Case
1 Form C	4.5 V DC	ARN10A4H	ARN30A4H	50 pcs.	500 pcs.
	12 V DC	ARN10A12	ARN30A12		
	24 V DC	ARN10A24	ARN30A24		

2. 2 coil latching type

Contact arrangement	Rated voltage	Part No.		Standard packing	
		Standard contact type		Carton	Case
1 Form C	4.5 V DC	ARN12A4H		50 pcs.	500 pcs.
	12 V DC	ARN12A12			
	24 V DC	ARN12A24			

3. Single side stable type

Contact arrangement	Rated voltage	Part No.		Standard packing	
		Standard contact type	Reversed contact type	Tape and reel	Case
1 Form C	4.5 V DC	ARN10A4H□	ARN30A4H□	400 pcs.	800 pcs.
	12 V DC	ARN10A12□	ARN30A12□		
	24 V DC	ARN10A24□	ARN30A24□		

* Please add an X (picked from 1 pin side) or Z (picked from 13 pin side) at the end of the part number when ordering.

* Packing style symbol "X", "Z" is not marked on the relay.

4. 2 coil latching type

Contact arrangement	Rated voltage	Part No.		Standard packing	
		Standard contact type	Reversed contact type	Tape and reel	Case
1 Form C	4.5 V DC	ARN12A4H□		400 pcs.	800 pcs.
	12 V DC	ARN12A12□			
	24 V DC	ARN12A24□			

* Please add an X (picked from 1 pin side) or Z (picked from 13 pin side) at the end of the part number when ordering.

* Packing style symbol "X", "Z" is not marked on the relay.

RATING

1. Coil data

1) Single side stable type

Rated voltage	Pick-up voltage* (at 20°C 68°F)	Drop-out voltage* (at 20°C 68°F)	Rated operating current [±10%] (at 20°C 68°F)	Coil resistance [±10%] (at 20°C 68°F)	Rated operating power	Max. allowable voltage (at 85°C 185°F)
4.5 V DC	75%V or less of rated voltage (initial)	10%V or more of rated voltage (initial)	71.1 mA	63.3 Ω	320 mW	110%V of rated voltage
12 V DC			26.7 mA	450 Ω		
24 V DC			13.3 mA	1,800 Ω		

* Square, pulse drive (JIS C5442-1996)

2) 2 coil latching type

Rated voltage	Set voltage* (at 20°C 68°F)	Reset voltage* (at 20°C 68°F)	Rated operating current [±10%] (at 20°C 68°F)	Coil resistance [±10%] (at 20°C 68°F)	Rated operating power	Max. allowable voltage (at 85°C 185°F)
4.5 V DC	75%V or less of rated voltage (initial)	75%V or less of rated voltage (initial)	88.9 mA	50.6 Ω	400 mW	110%V of rated voltage
12 V DC			33.3 mA	360 Ω		
24 V DC			16.7 mA	1,440 Ω		

* Square, pulse drive (JIS C5442-1996)

2. Specifications

Characteristics	Item	Specifications	
Contact data	Arrangement	1 Form C	
	Contact resistance (initial)	Max. 100 mΩ (By voltage drop 10 V AC 10mA)	
	Contact material	Gold plating	
	Contact rating (resistive)	80W (at 2 GHz, Impedance 50Ω, V.S.W.R. Max.1.15)	
	Contact input power (CW)*1	Max.150W (at 20°C 68°F) (at 2 GHz, Impedance 50Ω, V.S.W.R. Max.1.15, with heat sink) Max.100W (at 20°C 68°F) (at 2 GHz, Impedance 50Ω, V.S.W.R. Max.1.15, without heat sink)	
High frequency characteristics (initial) (to 6 GHz)		to 1 GHz 1 to 2 GHz 2 to 3 GHz 3 to 6 GHz	
	V.S.W.R. (Max.)	1.1 1.15 1.2 1.3	
	Insertion loss (without D.U.T. board's loss, dB, Max.)	0.1 0.12 0.15 0.5	
	Isolation (dB, Min.)	60 55 45 30	
Insulation resistance (initial)		Min. 1,000 MΩ (at 500V DC, Measured portion is the same as the case of dielectric voltage.)	
Breakdown voltage (initial)	Between open contacts	500 AC Vrms for 1min. (detection current: 10mA)	
	Between contact and earth terminal	500 AC Vrms for 1min. (detection current: 10mA)	
	Between contact and coil	500 AC Vrms for 1min. (detection current: 10mA)	
Time characteristics	Operate [Set] time (initial)	Max. 5 ms (at 20°C 68°F, at rated voltage, without bounce)	
	Release [Reset] time (initial)	Single side stable type: Max. 5 ms (at 20°C 68°F, at rated voltage, without bounce)*2 2 coil latching type: Max. 5 ms (at 20°C 68°F, at rated voltage, without bounce, without diode)	
Mechanical characteristics	Shock resistance	Functional	Min. 490 m/s ² (half-sine shock pulse: 11 ms, detection time: 10 μs)
		Destructive	Min. 980 m/s ² (half-sine shock pulse: 6 ms)
	Vibration resistance	Functional	10 to 55 Hz at double amplitude of 3 mm .118 inch (detection time: 10 μs)
		Destructive	10 to 55 Hz at double amplitude of 5 mm .197 inch
Expected life	Mechanical	Min. 1×10 ⁶ (at 180 cpm)	
	Electrical	• 1×10 ⁶ ope. at 10mA 10 V DC resistive (at 20 cpm), • 1×10 ⁶ ope. at 1W High frequency load (at 20 cpm, at 2 GHz, Impedance 50Ω, V.S.W.R. Max. 1.15), • 1×10 ³ ope. at 80 W High frequency load, operating frequency ON : OFF = 5.0s : 5.0s (at 2 GHz, Impedance 50Ω, V.S.W.R. Max. 1.15, at 20°C 68°F, with heatsink)	
Conditions	Conditions for operation, transport and storage	Ambient temperature: -40 to +85°C -40 to +185°F, Humidity: 5 to 85% R.H. (Not freezing and condensing at low temperature)	
Unit weight		Approx. 2.5 g .088 oz	

Notes: *1. Since the design of the PC board and heat dispersion conditions affect contact carrying power, please verify under actual conditions.

*2. Release time will leng then if a diode, etc., is connected in parallel to the coil. Be sure to verify operation under actual conditions.

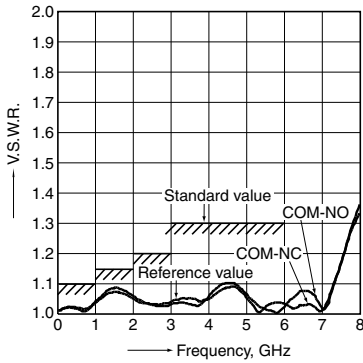
REFERENCE DATA

1. High frequency characteristics

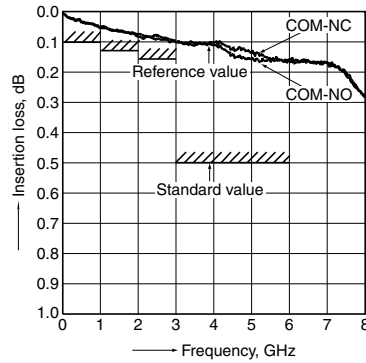
Sample: ARN10A12

Measuring method: Measured with Agilent Technologies network analyzer (E8363B). *For details, see "9. Measuring method" under "NOTES".

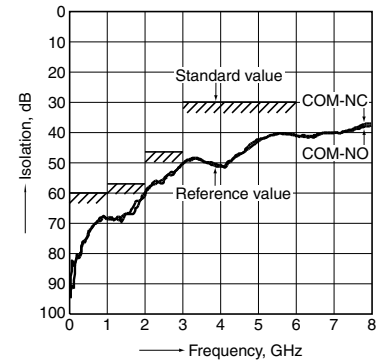
• V.S.W.R. characteristics



• Insertion loss characteristics (without D.U.T. board's loss)



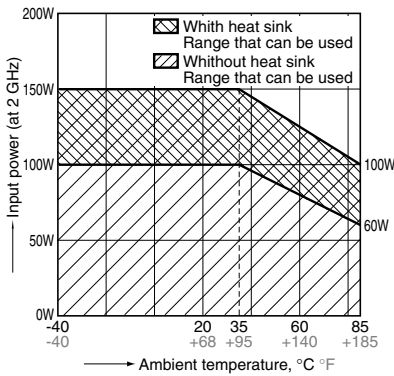
• Isolation characteristics



2. Contact carrying power (CW)

Max. 150 W (with heat sink) (at 2 GHz, Impedance 50Ω, V.S.W.R. Max. 1.15, at 20°C 68°F)

Max. 100 W (without heat sink) (at 2 GHz, Impedance 50Ω, V.S.W.R. Max. 1.15, at 20°C 68°F)



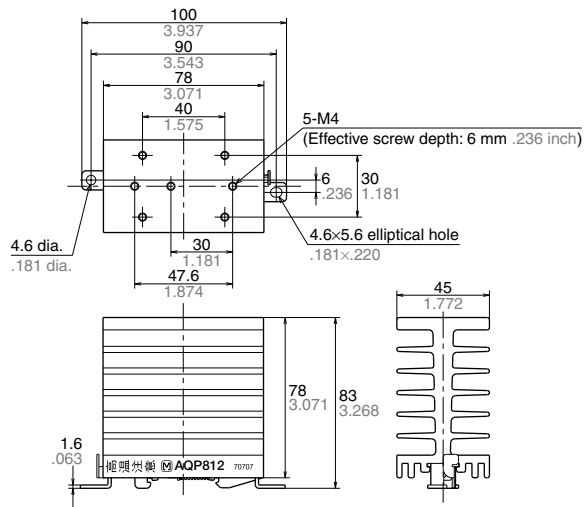
Measuring conditions:

Heat sink (AQP-HS-SJ20A) is used. (Reference: 2.9°C 37.22°F/W)

Heat sink (AQP-HS-SJ20A) (mm inch)



External dimensions



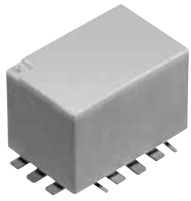
General tolerance: $\pm 0.1 \pm .004$

RN (ARN)

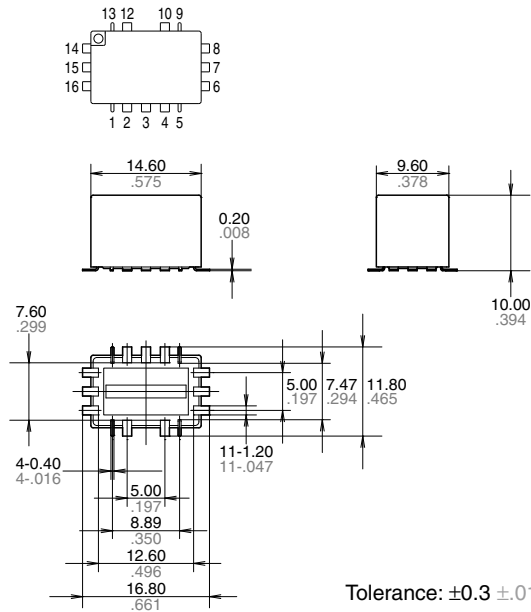
DIMENSIONS (mm inch)

The CAD data of the products with a **CAD** mark can be downloaded from: <http://industrial.panasonic.com/ac/e/>

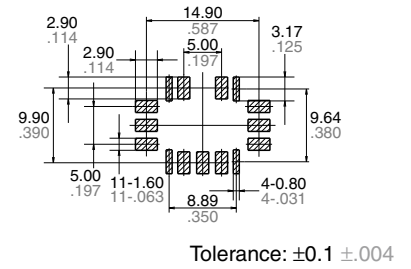
CAD



External dimensions

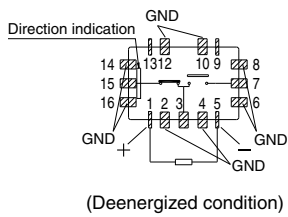


PC board pattern

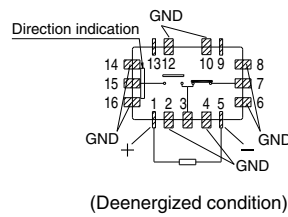


Schematic (Top view)

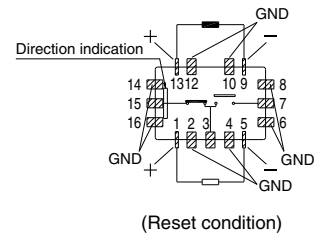
Single side stable type/Standard contact type



Single side stable type/Reversed contact type



2 coil latching type/Standard contact type



NOTES

1. Regarding cautions for use, please refer to “GENERAL APPLICATION GUIDELINES” on our general catalog.

2. Coil operating power

Pure DC current should be applied to the coil. If it includes ripple, the ripple factor should be less than 5%. However, check it with the actual circuit since the characteristics may be slightly different. The wave form of power should be rectangular. To ensure accurate operation, the voltage on both sides of the coil should be $\pm 5\%$ (at 20°C 68°F) of the nominal coil voltage. Also, please note that the pick-up and drop-out voltages (set and reset voltages) will change depending on operation temperature and conditions of use.

3. Coil connection

This relay is polarized relay, the coil voltage must be applied with correct polarity.

4. External magnetic field

Since RN relays are highly sensitive polarized relays, their characteristics will be affected by a strong external magnetic field. Avoid using the relay under that condition.

5. Cleaning

This product is not sealed type, therefore washing is not allowed.

6. Conditions for operation, transport and storage

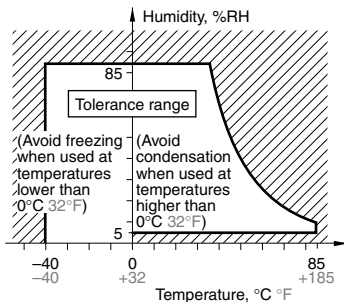
1) Temperature: -40 to $+85^\circ\text{C}$ -40 to $+185^\circ\text{F}$ (But allowable temperature is from -40 to $+60^\circ\text{C}$ -40 to $+140^\circ\text{F}$ at our standard packing condition.)

2) Humidity: 5 to 85% R.H. (Avoid freezing and condensation.)

The humidity range varies with the temperature. Use within the range indicated in the graph below.

3) Atmospheric pressure: 86 to 106 kPa

Temperature and humidity range for usage, transport, and storage



4) Condensation

Condensation forms when there is a sudden change in temperature under high temperature and high humidity conditions. Condensation will cause deterioration of the relay insulation.

5) Freezing

Condensation or other moisture may freeze on the relay when the temperature is lower than 0°C 32°F . This causes problems such as sticking of movable parts or operational time lags.

6) Low temperature and low humidity environments

The plastic becomes brittle if the relay is exposed to a low temperature, low humidity environment for long periods of time.

7) Storage requirements

Since the relay is sensitive to humidity, it comes in sealed anti-humidity packaging. However, when storing, please be careful of the following.

(1) Please use promptly once the anti-humidity pack is opened.

(2) When storing for a long period after opening the anti-humidity

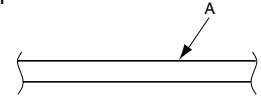
pack, storage in anti-humidity packaging with an antihumidity bag to which silica gel has been added, is recommended.

*Furthermore, if the relay is solder mounted when it has been subjected to excessive humidity, cracks and leaks can occur. Be sure to mount the relay under the required mounting conditions.

7. Soldering

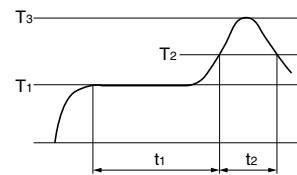
Please meet the following conditions if this relay is to be automatically soldered.

1) Position of measuring temperature



A: Surface of PC board where relay is mounted.

2) IR (infrared reflow) soldering method



$T_1 = 150$ to 180°C 302 to 356°F $t_1 = 60\text{s}$ to 120s
 $T_2 = 230^\circ\text{C}$ 446°F and higher $t_2 = \text{within } 30\text{s}$
 $T_3 = 250^\circ\text{C}$ 482°F max.

• Mounting cautions

Rise in relay temperature depends greatly on the component mix on a given PC board and the heating method of the reflow equipment. Therefore, please test beforehand using actual equipment to ensure that the temperature where the relay terminals are soldered and the temperature at the top of the relay case are within the conditions given above.

3) Please meet the following conditions if this relay is to be soldered by hand.

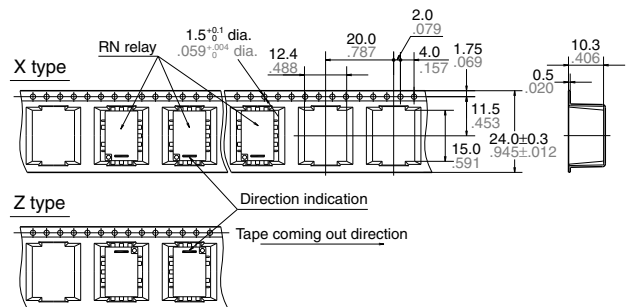
(1) Max. 260°C 500°F (solder temperature), within 10 seconds (soldering time)

(2) Max. 350°C 662°F (solder temperature), within 3 seconds (soldering time)

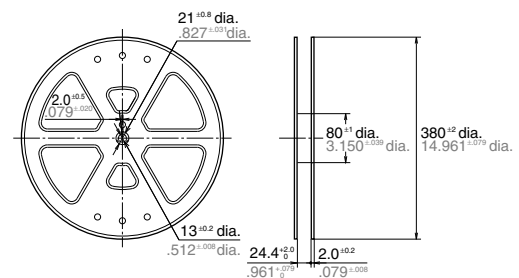
The effect on the relay depends on the actual PC board used. Please verify the PC board to be used.

8. Tape and reel packing

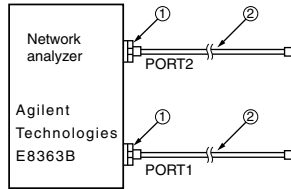
1) Tape dimensions (General tolerance: $\pm 0.1 \pm 0.04$)



2) Dimensions of plastic reel



9. Measuring method (50Ω type)



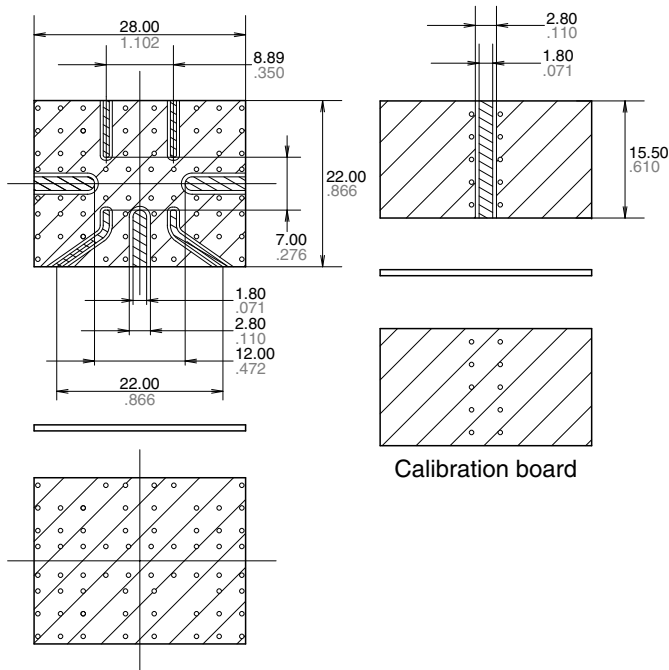
Connect connectors 1 and 2 respectively to PORT 1 and PORT 2. Perform calibration using the 3.5 mm calibration kit (HP85052B).

No.	Product name	Contents
1	Agilent 85130-60011	Adapter 2.4mm-3.5mm female .095inch-.138inch female
2	SUHNER SUCOFLEX104	Cable 3.5mm-3.5mm male .138inch-.138inch male

After calibration, connect the D.U.T. board and measure. However, connectors other than those for measurement should be connected with a 50Ω termination resistor.

D.U.T. board

Dimensions (mm inch)



Material: Glass PTFE (double-sided, through hole PC board)
R-4737 (manufactured by our company)
Board thickness: $t = 0.8 \text{ mm}$.031 inch
Copper plating thickness: 18 μm
Connector (SMA type)
Product name: 01K1808-00 (Waka Manufacturing Co., Ltd.)
Insertion loss compensation: The insertion loss of relay itself is given by subtracting the insertion loss of calibration board.

10. Others

1) The switching lifetime is defined under the standard test condition specified in the JIS* C 5442 standard (temperature 15 to 35°C 59 to 95°F, humidity 25 to 75%RH). Check this with the real device as it is affected by coil driving circuit, load type, activation frequency, activation phase, ambient conditions and other factors. *JIS: Japanese Industrial Standards
Also, be especially careful of loads such as those listed below.

- When used for AC load-operating and the operating phase is synchronous, rocking and fusing can easily occur due to contact shifting.
- When high-frequency opening and closing of the relay is performed with a load that causes arcs at the contacts, nitrogen and oxygen in the air is fused by the arc energy and HNO_3 is formed. This can corrode metal materials. Three countermeasures for these are listed here.
 - (1) Incorporate an arc-extinguishing circuit.
 - (2) Lower the operating frequency
 - (3) Lower the ambient humidity

2) Use the relay within specifications such as coil rating, contact rating and on/off service life. If used beyond limits, the relay may overheat, generate smoke or catch fire.

3) Be careful not to drop the relay. If accidentally dropped, carefully check its appearance and characteristics before use.

4) Be careful to wire the relay correctly. Otherwise, malfunction, overheat, fire or other trouble may occur.

5) If a relay stays on in a circuit for many months or years at a time without being activated, circuit design should be reviewed so that the relay can remain non-excited. A coil that receives current all the time heats, which degrades insulation earlier than expected. A latching type relay is recommended for such circuits.

6) To ensure accurate operation of the latching type amidst surrounding temperature changes and other factors that might affect the set and reset pulse times, we recommend a coil impress set and reset pulse width of at least 30 ms at the rated operation voltage.

7) The latching type relay is shipped in the reset position. But jolts during transport or impacts during installation can change the reset position. It is, therefore, advisable to build a circuit in which the relay can be initialized (set and reset) just after turning on the power.

8) If silicone materials (e.g., silicone rubbers, silicone oils, silicone coating agents, silicone sealers) are used in the vicinity of the relay, the gas emitted from the silicone may adhere to the contacts of the relay during opening and closing and lead to improper contact. If this is the case, use a material other than silicone.

For general cautions for use, please refer to the "General Application Guidelines".

Please contact

Panasonic Corporation

Electromechanical Control Business Division

■ 1006, Oaza Kadoma, Kadoma-shi, Osaka 571-8506, Japan
industrial.panasonic.com/ac/e/

Panasonic®

©Panasonic Corporation 2017

单击下面可查看定价，库存，交付和生命周期等信息

[>>Panasonic\(松下\)](#)