

Approved	Checked	Designed	DEVELOPMENT SPECIFICATION			
		T. Tabata		P/N: LNJ218C82RA	TEMPORARY	

T Y P E	Red Light Emitting Diode					
APPLICATION	Indicators					
MATERIAL	InGaAlP					
OUTLINE	Attached					
ABSOLUTE MAXIMUM RATINGS	P	*1 I <sub>FP</sub>	I <sub>FDC</sub>	V <sub>R</sub>	Topr	Tstg
	55	60	20	4	-30~+85	-40~+100
	mW	mA	mA	V	°C	°C
CONDITION	T <sub>a</sub> = 25 ± 3°C					

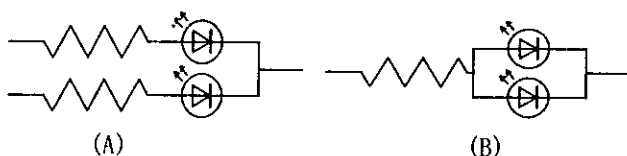
Test Specification

I t e m	Symbol	C o n d i t i o n	Typ	Limit		Unit
				Min	Max	
Forward Voltage	V <sub>F</sub>	I <sub>F</sub> = 10 mA	1.92		2.5	V
Reverse Leakage Current	I <sub>R</sub>	V <sub>R</sub> = 4 V			100	μA
Luminous Intensity *2	I <sub>O</sub>	I <sub>F</sub> = 10 mA DC	75	40		mcd
Peak Emission Wavelength	λ <sub>p</sub>	I <sub>F</sub> = 10 mA DC	645			nm
Spectral Line Half Width	Δλ	I <sub>F</sub> = 10 mA DC	22			nm

- \*1. The Condition of I<sub>FP</sub> is duty 10 %, Pulse width 1 ms
- \*2. Tolerance of luminous intensity : ±20%.

NOTE

- ★1. Please contact the Panasonic local office if you design at low current (below 1mA DC) or pulse current operation and have any questions.
- ★2. Soldering conditions...Refer to Handling note.
- ★3. Compositions of the lead ... Cu/Ni/Au plating
- ★4. Package...Clear type.
- ★5. Beware of destruction by static electricity in handling the LED.
- ★6. Circuit to operate LED.



- (A) Recommended circuit.
- (B) The difference of brightness between the LED could be found due to the V<sub>F</sub> characteristics of each LED.

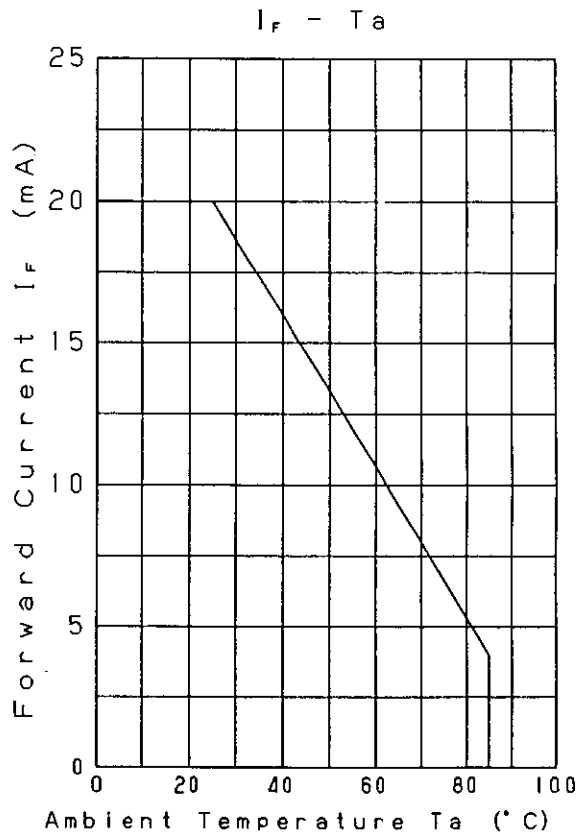
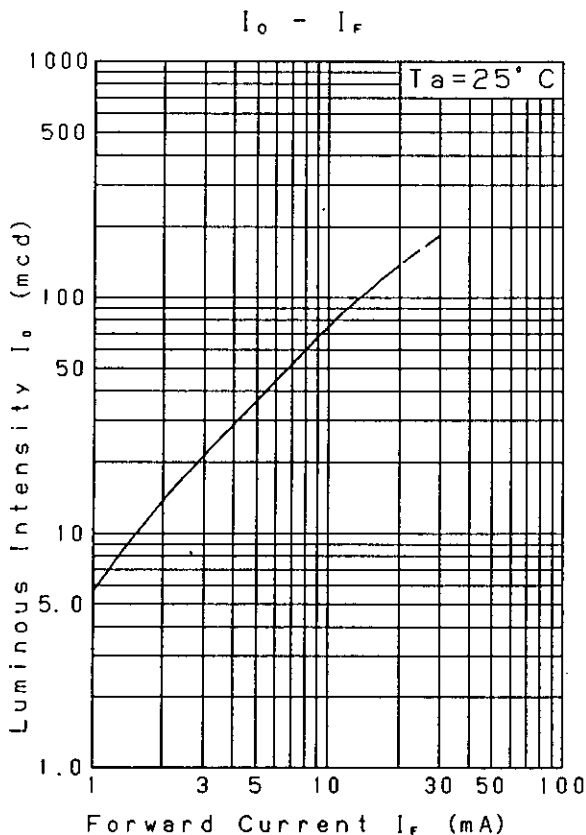
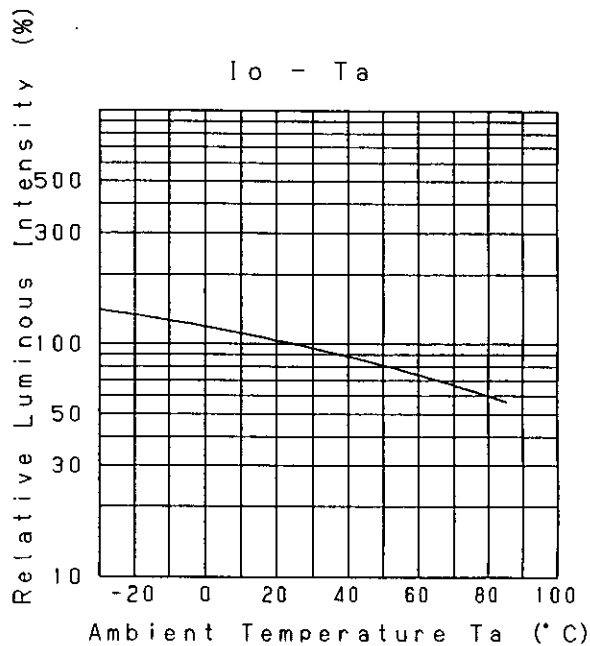
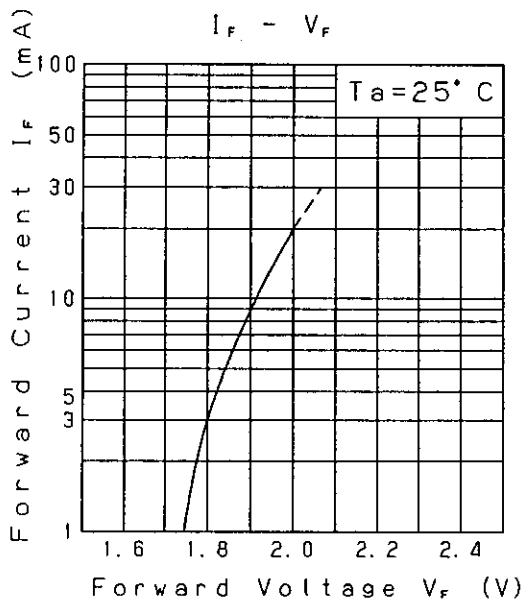
Nov. 7. 2001			

Approved	Checked	Designed
		T. Takata

DEVELOPMENT SPECIFICATION

P/N: LNJ218C82RA

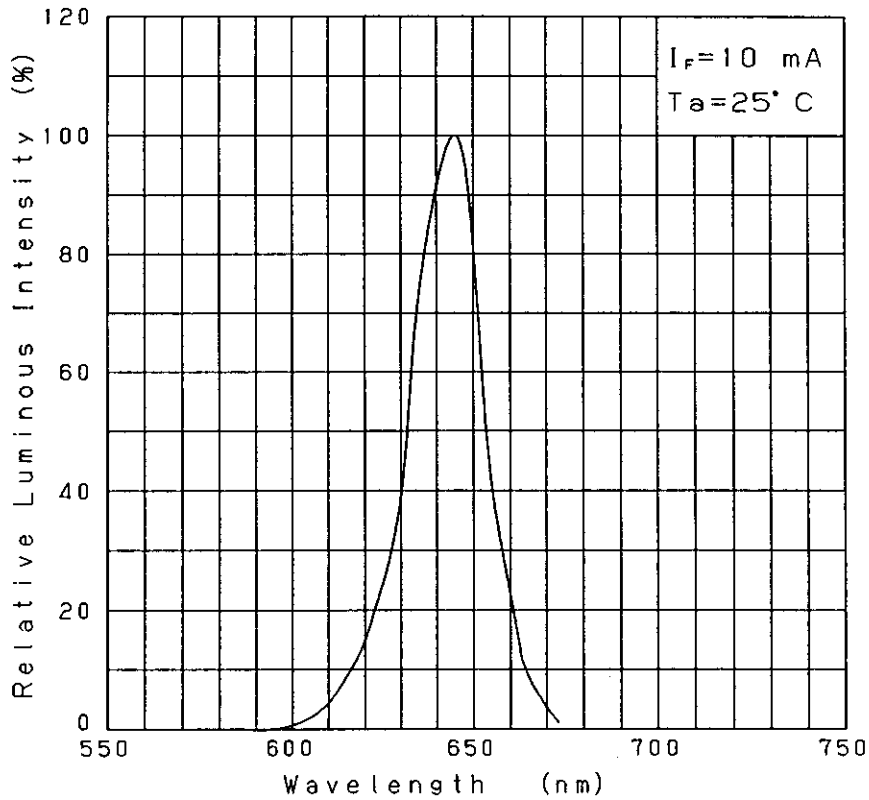
TEMPORARY



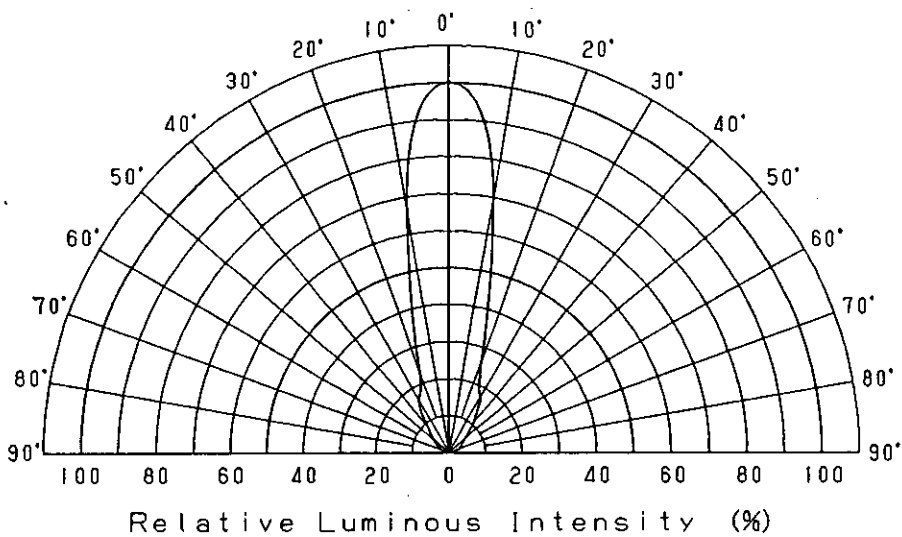
Nov. 7, 2001

Approved	Checked	Designed	DEVELOPMENT SPECIFICATION	TEMPORARY
		T. Tabata		

Relative Luminous Intensity  
Wavelength Characteristics



Directive Characteristics



Nov. 7. 2001		

Approved    Checked    Designed

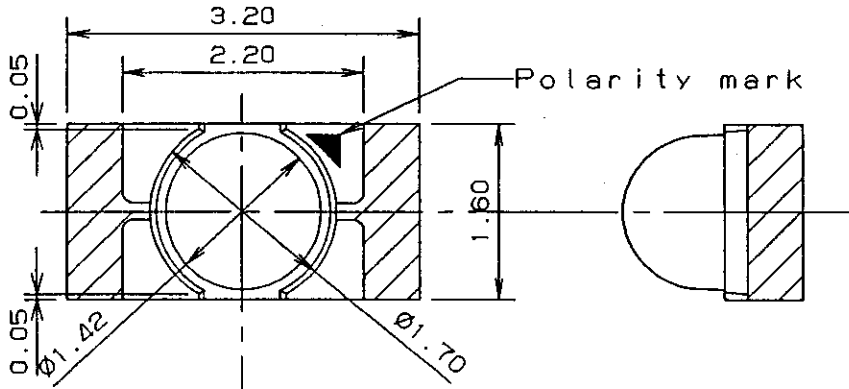
T. Shudo    h. h.    T. Tabata

# DEVELOPMENT SPECIFICATION (OUTLINE)

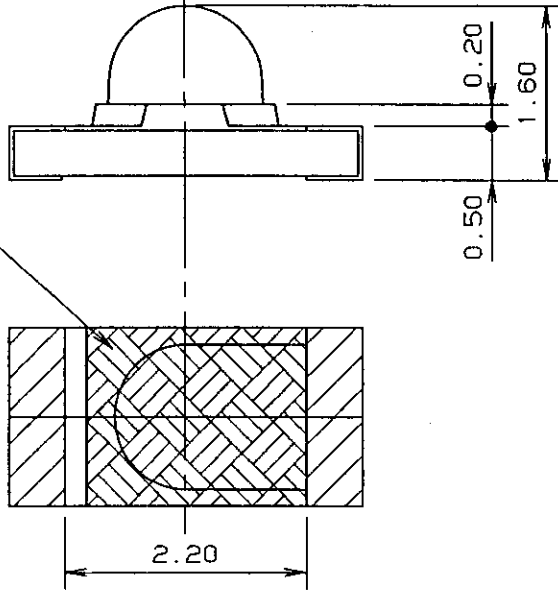
P/N: \_\_\_\_\_

TEMPORARY

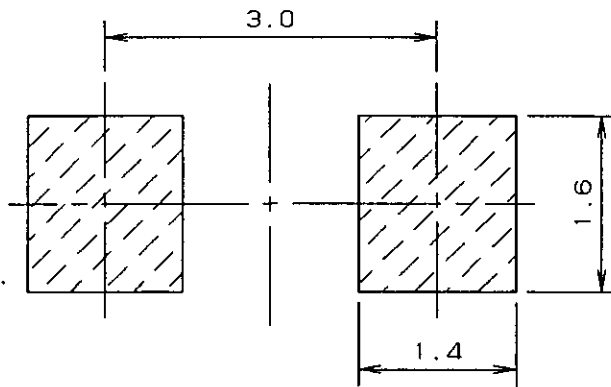
Outline



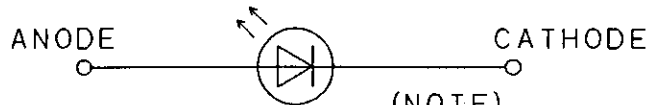
Protect mask



Recommended Land Layout



Polarity



(NOTE)

1. Unit:mm

2. Tolerance unless specified is  $\pm 0.15$ .

3. indicate Au terminal.

Jul. 5.2001

Panasonic

KAGOSHIMA MATSUSHITA ELECTRONICS CO., LTD.

KB-H-022-018B

单击下面可查看定价，库存，交付和生命周期等信息

[>>Panasonic\(松下\)](#)