

Panel feed-through terminal block - DFK-WW(1 X1) - 0735032


Please be informed that the data shown in this PDF Document is generated from our Online Catalog. Please find the complete data in the user's documentation. Our General Terms of Use for Downloads are valid (<http://phoenixcontact.com/download>)



Panel feed-through terminal block, Connection method: Screw connection, Wire-Wrap® connection, Cross section: 0.2 mm² - 4 mm², AWG 24 - 12, Width: 5.9 mm, Color: gray



Key Commercial Data

| | |
|--------------------------------------|---|
| Packing unit | 1 pc |
| Minimum order quantity | 50 pc |
| GTIN |  4 017918 005405 |
| Weight per Piece (excluding packing) | 5.57 g |
| Custom tariff number | 85369010 |
| Country of origin | Bulgaria |

Technical data

General

| | |
|--|-------|
| Number of levels | 1 |
| Number of connections | 2 |
| Color | gray |
| Insulating material | PA |
| Flammability rating according to UL 94 | V2 |
| Rated surge voltage | 4 kV |
| Pollution degree | 3 |
| Overvoltage category | III |
| Insulating material group | I |
| Nominal current I _N | 10 A |
| Nominal voltage U _N | 250 V |
| Open side panel | nein |

Panel feed-through terminal block - DFK-WW(1 X1) - 0735032

Technical data

General

| | |
|---------------------|---|
| Number of positions | 0 |
|---------------------|---|

Dimensions

| | |
|-------|--------|
| Width | 5.9 mm |
|-------|--------|

Connection data

| | |
|---|-----------------------|
| Connection side | Level 1 ext. 1 |
| Connection method | Screw connection |
| Conductor cross section solid min. | 0.2 mm ² |
| Conductor cross section solid max. | 4 mm ² |
| Conductor cross section flexible min. | 0.2 mm ² |
| Conductor cross section flexible max. | 4 mm ² |
| Conductor cross section AWG min. | 24 |
| Conductor cross section AWG max. | 12 |
| Conductor cross section flexible, with ferrule without plastic sleeve min. | 0.25 mm ² |
| Conductor cross section flexible, with ferrule without plastic sleeve max. | 4 mm ² |
| Conductor cross section flexible, with ferrule with plastic sleeve min. | 0.25 mm ² |
| Conductor cross section flexible, with ferrule with plastic sleeve max. | 2.5 mm ² |
| 2 conductors with same cross section, solid min. | 0.2 mm ² |
| 2 conductors with same cross section, solid max. | 1 mm ² |
| 2 conductors with same cross section, stranded min. | 0.2 mm ² |
| 2 conductors with same cross section, stranded max. | 1.5 mm ² |
| 2 conductors with same cross section, stranded, ferrules without plastic sleeve, min. | 0.5 mm ² |
| 2 conductors with same cross section, stranded, ferrules without plastic sleeve, max. | 2.5 mm ² |
| 2 conductors with same cross section, stranded, TWIN ferrules with plastic sleeve, min. | 0.5 mm ² |
| 2 conductors with same cross section, stranded, TWIN ferrules with plastic sleeve, max. | 2.5 mm ² |
| Stripping length | 9 mm |
| Internal cylindrical gage | A3 |
| Screw thread | M3 |
| Tightening torque, min | 0.6 Nm |
| Tightening torque max | 0.8 Nm |
| Connection side | Level 1 int. 1 |
| Connection method | Wire-Wrap® connection |
| Conductor cross section AWG min. | 30 |
| Conductor cross section AWG max. | 20 |
| Internal cylindrical gage | A3 |

Panel feed-through terminal block - DFK-WW(1 X1) - 0735032

Technical data

Connection data

| | |
|--------------------|----------|
| Slip-on connection | 1 x 1 mm |
|--------------------|----------|

Standards and Regulations

| | |
|--|-----|
| Connection in acc. with standard | CSA |
| Flammability rating according to UL 94 | V2 |

Classifications

eCl@ss

| | |
|------------|----------|
| eCl@ss 4.0 | 27141131 |
| eCl@ss 4.1 | 27141131 |
| eCl@ss 5.0 | 27141134 |
| eCl@ss 5.1 | 27141134 |
| eCl@ss 6.0 | 27141134 |
| eCl@ss 7.0 | 27141134 |
| eCl@ss 8.0 | 27141134 |

ETIM

| | |
|----------|----------|
| ETIM 2.0 | EC001283 |
| ETIM 3.0 | EC001283 |
| ETIM 4.0 | EC001283 |
| ETIM 5.0 | EC001283 |

UNSPSC

| | |
|---------------|----------|
| UNSPSC 6.01 | 30211811 |
| UNSPSC 7.0901 | 39121410 |
| UNSPSC 11 | 39121410 |
| UNSPSC 12.01 | 39121410 |
| UNSPSC 13.2 | 39121410 |

Approvals

Approvals

Approvals

CSA / UL Recognized / cUL Recognized / EAC / cULus Recognized

Panel feed-through terminal block - DFK-WW(1 X1) - 0735032

Approvals

Ex Approvals

Approvals submitted

Approval details

| | |
|--------------------------------|-------|
| CSA | |
| mm ² /AWG/kcmil | 22-12 |
| Nominal current I _N | 10 A |
| Nominal voltage U _N | 300 V |

| | |
|--------------------------------|-------|
| UL Recognized | |
| mm ² /AWG/kcmil | 28-12 |
| Nominal current I _N | 10 A |
| Nominal voltage U _N | 300 V |

| | |
|--------------------------------|-------|
| cUL Recognized | |
| mm ² /AWG/kcmil | 28-12 |
| Nominal current I _N | 10 A |
| Nominal voltage U _N | 300 V |

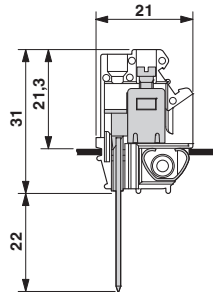
| |
|-----|
| EAC |
|-----|

| |
|------------------|
| cULus Recognized |
|------------------|

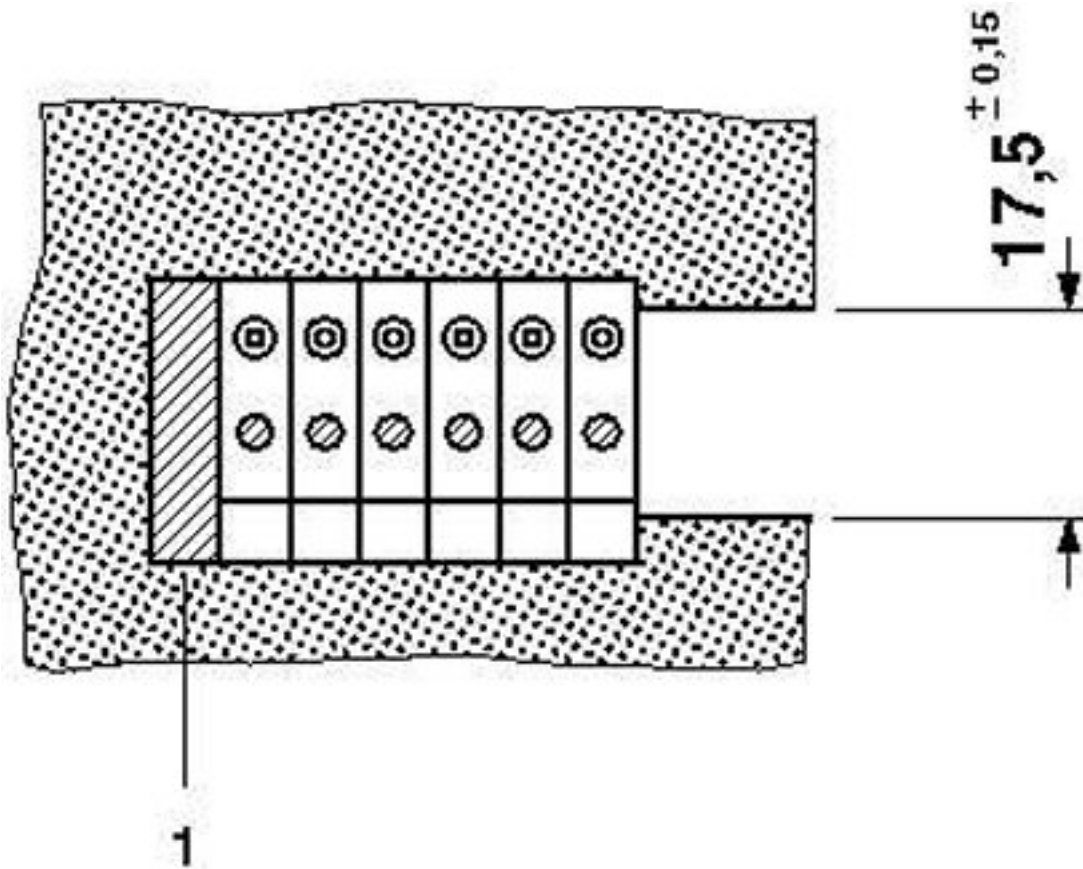
Drawings

Panel feed-through terminal block - DFK-WW(1 X1) - 0735032

Dimensional drawing



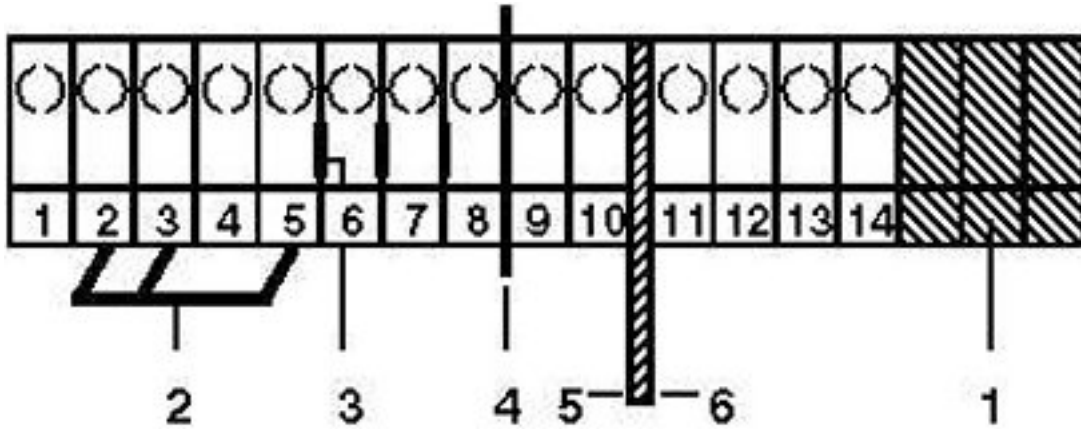
Dimensional drawing



1 = blind cover

Panel feed-through terminal block - DFK-WW(1 X1) - 0735032

Circuit diagram



- 1 = blind cover
- 2 = insertion bridge
- 3 = separating plate
- 4 = partition plates
- 5 = separating plate
- 6 = separating plate, long version

单击下面可查看定价，库存，交付和生命周期等信息

[>>Phoenix Contact\(菲尼克斯\)](#)