

## Flush-type connector - SACC-CIP-M8FS-3P SMD SH T - 1412235

Please be informed that the data shown in this PDF Document is generated from our Online Catalog. Please find the complete data in the user's documentation. Our General Terms of Use for Downloads are valid (<http://phoenixcontact.com/download>)



Flush-type connector, 3-position, SocketLink:straightLink:M8, A-coded, PCB mounting, SMD



### Key Commercial Data

Packing unit	1 pc
Minimum order quantity	60 pc
Custom tariff number	85366990
Country of origin	Germany

### Technical data

#### Ambient conditions

Ambient temperature (operation)	-25 °C ... 105 °C (Plug / socket)
	-40 °C ... 105 °C (without mechanical actuation)
Degree of protection	IP67 (correctly plugged in and locked)
	IP65 (not plugged in, by means of additional O-ring seal with device)

#### General

Note	The electrical and mechanical data specified assume that the connector pair is correctly locked and mounted. If the connector is unlocked and if there is a danger of contamination, the connector must be sealed using a protective cap > IP54. Influences arising from litz wires, cables or PCB assembly must also be taken into consideration.
Rated current at 40°C	3 A
Rated voltage	50 V AC
	60 V DC
Number of positions	3
Contact resistance	≤ 3 mΩ
Insulation resistance	≥ 100 MΩ
Coding	A - standard

# Flush-type connector - SACC-CIP-M8FS-3P SMD SH T - 1412235

## Technical data

### General

Standards/regulations	M8 connector IEC 61076-2-104
Surge voltage category	II
Connection method	SMD
Insertion/withdrawal cycles	> 100
Mounting type	PCB mounting
Type of packaging	Tray

### Material

Inflammability class according to UL 94	V0
Contact material	CuZn
Contact surface material	Au
Contact carrier material	PA
Sealing material	FKM

## Classifications

### eCl@ss

eCl@ss 5.1	27143423
eCl@ss 6.0	27279220

### ETIM

ETIM 5.0	EC002061
----------	----------

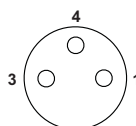
## Drawings

### Dimensional drawing

SMD  
tray  
packaging

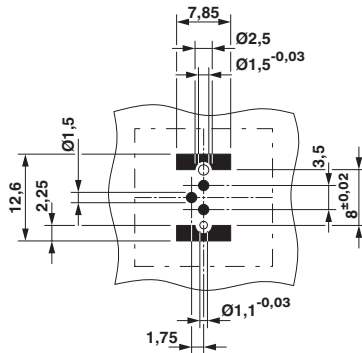
Pin assignment M8 socket, 3-pos., view female side

### Schematic diagram

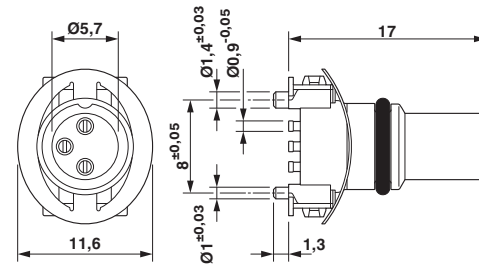


## Flush-type connector - SACC-CIP-M8FS-3P SMD SH T - 1412235

Drilling diagram



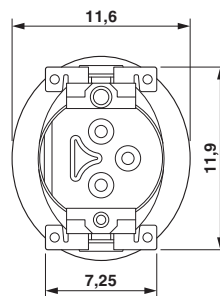
Dimensional drawing



M8 flush-type socket

Drilling diagram

Dimensional drawing



View of solder side

单击下面可查看定价，库存，交付和生命周期等信息

[>>Phoenix Contact\(菲尼克斯\)](#)