

## Bus system flat-type plug - SACC-DSIV-M12MSD-4CON-L90 - 1434866

Please be informed that the data shown in this PDF Document is generated from our Online Catalog. Please find the complete data in the user's documentation. Our General Terms of Use for Downloads are valid (<http://download.phoenixcontact.com>)



Bus system flush-type connector, ETHERNET, 4-pos., M12, shielded, D-coded, rear/screw mounting, with angled solder connection



### Key commercial data

|                        |          |
|------------------------|----------|
| Packing unit           | 1 PCE    |
| Minimum order quantity | 10 PCE   |
| Custom tariff number   | 85369010 |
| Country of origin      | Germany  |

### Technical data

#### Ambient conditions

|                                 |                  |
|---------------------------------|------------------|
| Ambient temperature (operation) | -25 °C ... 85 °C |
| Degree of protection            | IP67             |

#### General

|                        |  |
|------------------------|--|
| Note                   | This product corresponds to the PROFINET Cabling and Interconnection Technology Guideline for PROFINET regulations, version 2.00, order no: 2.252, Chapter 8.2 Connectors for Outside Environment (Balanced cabling) |
| Rated current at 40°C  | 4 A  |
| Rated voltage          | 250 V  |
| Number of positions    | 4  |
| Contact resistance     | ≤ 5 mΩ   |
| Insulation resistance  | ≥ 100 MΩ   |
| Coding                 | D - data   |
| Standards/regulations  | M12 connector IEC 61076-2-101  |
| Status display         | No   |
| Surge voltage category | II   |

# Bus system flat-type plug - SACC-DSIV-M12MSD-4CON-L90 - 1434866

## Technical data

### General

|                   |                                     |
|-------------------|-------------------------------------|
| Pollution degree  | 3                                   |
| Connection method | Solder pins                         |
| Mounting type     | Rear mounting M12 x 1 With flat nut |

### Material

|   |                     |
|---|---------------------|
| Inflammability class according to UL 94 | HB                  |
| Contact material                        | CuZn                |
| Contact surface material                | Au                  |
| Contact carrier material                | PA 66               |
| Material, knurls                        | Nickel-plated brass |
| Sealing material                        | NBR                 |

## Classifications

### eCl@ss

|            |          |
|------------|----------|
| eCl@ss 4.0 | 27250313 |
| eCl@ss 4.1 | 27250313 |
| eCl@ss 5.0 | 27143423 |
| eCl@ss 5.1 | 27143423 |
| eCl@ss 6.0 | 27143423 |
| eCl@ss 7.0 | 27449001 |
| eCl@ss 8.0 | 27449001 |

### ETIM

|          |          |
|----------|----------|
| ETIM 3.0 | EC001855 |
| ETIM 4.0 | EC002062 |
| ETIM 5.0 | EC002062 |

### UNSPSC

|               |          |
|---------------|----------|
| UNSPSC 6.01   | 31251501 |
| UNSPSC 7.0901 | 31251501 |
| UNSPSC 11     | 31251501 |
| UNSPSC 12.01  | 31251501 |
| UNSPSC 13.2   | 31251501 |

## Approvals

### Approvals

# Bus system flat-type plug - SACC-DSIV-M12MSD-4CON-L90 - 1434866

## Approvals

Approvals

GOST

---

Ex Approvals

---

Approvals submitted

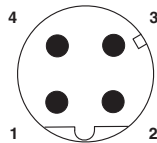
---

## Approval details



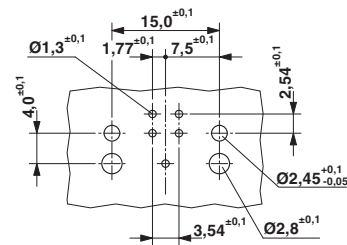
## Drawings

Schematic diagram



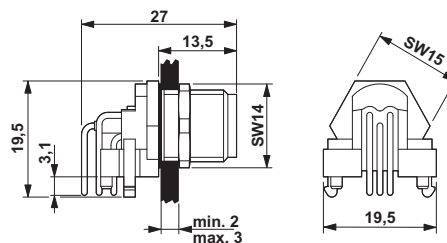
Pin assignment M12 male connector, 4-pos., D-coded, male side

Drilling diagram



M12 flush-type connector

Dimensioned drawing



M12 flush-type connector



单击下面可查看定价，库存，交付和生命周期等信息

[>>Phoenix Contact\(菲尼克斯\)](#)