

ST-COMBI Pluggable Spring Cage Terminal Blocks

The base terminal blocks of the ST-COMBI series provide solutions for a wide variety of applications. The series includes feed-through terminal blocks with one or two connector entries, four-conductor terminal blocks with two or four connector entries and space-saving double-level terminal blocks also with two connector entries. The same accessories are used for the base terminal blocks as for the ST standard series. Ground terminal blocks with the same shape and the same pitch are available for the various base terminal blocks. Contact is made by simply snapping the terminal block onto the mounting rail. All the requirements of IEC 60 947-7-2 are fulfilled.

ST-COMBI Plugs and ST-COMBI Receptacles

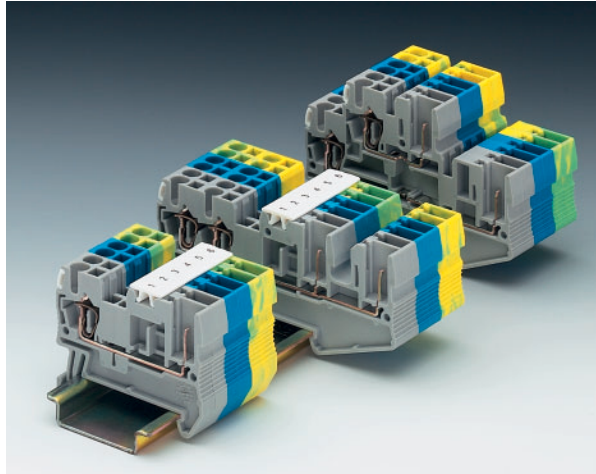
As with the base terminal blocks, the plugs also offer the perfect solution for every application. The SP 2,5... plugs are designed for the connection of one conductor. The SPB 2,5... plug fulfills the same purpose but also provides an additional bridging facility. The SPDB 2,5... plug is designed for the connection of two conductors and also provides an additional bridging facility. With the receptacles SC 2,5/..., plug-in contacts can be safely accommodated in cable ducts and distributor shafts without using much space. The standard strain relief can also be used. Large-surface labeling makes it possible to clearly identify the plug connection. The integrated test connection makes it possible to test each contact point using a 2.3 mm test plug.

Strain relief PZ/PDZ

Strain reliefs are available for the plugs and can be snapped on at the required points as an option. The PZ... strain reliefs for SP... and SPB... plugs are snapped on externally. The PDZ... strain relief for the SPDB plug is snapped on at the plug center.

PZ/PRZ snap-lock fitting

The PR... snap-lock fitting can be used for all plug variants. It is snapped into the outside of the plug housing as an option and hooks onto the terminal block housing when the plug is snapped on. PRZ can be used when an application requires strain relief and a snap-lock fitting. PRZ is also snapped into the plug housing as an option and offers a combination of snap fitting and strain relief in a single component.



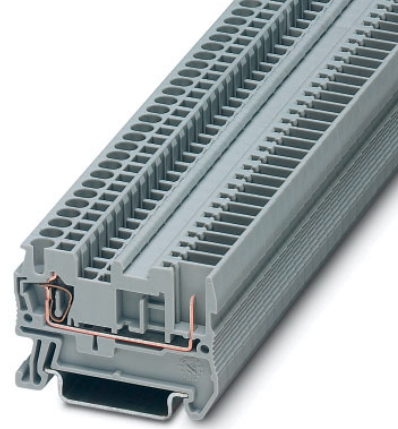
Shield connection PSH

PSH... provides a solution for the connection of shielded conductors. PSH... is snapped into PZ... or PRZ after the terminal blocks have been wired and is then permanently secured using a cable tie. The PSH connecting cable is connected to a connector conductor and makes contact directly with the terminal block when inserted.

PC coding option

Specific connector positions can be defined for all the base terminal blocks using the PC coding star. To do this, the individual branches of the coding star are inserted at the coding position in the base terminal block and the coding lug is removed at the corresponding point of the connector.

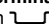


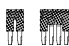






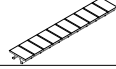
Pluggable Spring Cage Terminal Blocks ST 2,5/ 1P



(IEC) [mm ²]	rigid solid	flexible stranded	AWG	I [A]	U [V]
Connection data	0.08-4	0.08-2.5	28-12	24	500



Technical data

Spring cage terminal block, for mounting on 	gray blue	terminal width 5.2 terminal width 5.2	
(1) Cover	gray		
(2) Insulating stop sleeve, prevents unintentional clamping of the insulation in the case of smaller cross sections Cross section range:	0.08-0.2 mm ² 0.25-0.5 mm ² 0.75-1 mm ²	white gray black	
(3) Plug-in bridge, for cross bridging in the terminal center	2-pos. 3-pos. 4-pos. 5-pos. 10-pos. 20-pos.		
(4) Partition plate, for visual and electrical separation of terminal groups, 2 mm thick			
(5) Test adapter, for 4 mm Ø PS test plug and 4 mm Ø safety test plugs, makes contact in the bridge shaft			
(6) 2.3 mm Ø test plug ¹⁾ , consisting of metal part and red insulating sleeve			
(7) Modular test plug, labeling with ZBF 5			
(8) Coding star, with 4 coding pins, for mounting in all base terminal blocks			
(9) Warning cover, for the actuating ducts of the "mini-spring" ST spring cage terminal blocks			
(10) Screwdriver, for actuating the tension spring			
(11) Zack strip, flat, for labeling the center and outer marker grooves	white		
(12) Zack strip, 10-section, for labeling in the terminal center	white		

Dimensions

Width / length / end cover width	[mm]
Height (NS 35/7,5 / NS 35/15)	[mm]

Technical data in accordance with IEC / DIN VDE

Maximum // Rated data	[A] / [mm ²]
Rated surge voltage / contamination class	[kV] / -
Surge voltage category / insulation material group	- / -

Connection capacity

Stranded with ferrule with plastic sleeve	[mm ²]
Stranded with ferrule without plastic sleeve	[mm ²]
Stranded with TWIN ferrule with plastic sleeve	[mm ²]
Stripping length	[mm]

Internal cylindrical gauge (IEC 60 947-1)

Insulation material	
Inflammability class acc. to UL 94	

Approval data (UL and CSA/CUL)

Nominal voltage / current / conductor sizes	UL: [V]/[A]/AWG
	CSA/CUL: [V] / [A] / AWG

Type	Order No.	Pcs. Pkt.
ST 2,5/ 1P	30 40 01 2	50
ST 2,5/ 1P BU	30 40 65 6	50
D-ST 2,5	30 30 41 7	50
ISH 2,5/0,2	30 02 84 3	50
ISH 2,5/0,5	30 02 85 6	50
ISH 2,5/1	30 02 86 9	50
FBS 2-5	I_{max} : 24 A	30 30 16 1
FBS 3-5	24 A	30 30 17 4
FBS 4-5	24 A	30 30 18 7
FBS 5-5	24 A	30 30 19 0
FBS 10-5	24 A	30 30 21 3
FBS 20-5	24 A	30 30 22 6
ATP-ST 4	30 30 72 1	50
PAI 4	30 30 92 5	10
MPS-RD	02 01 55 3	10
PS 5	30 30 98 3	10
PC	30 40 58 8	50
WST 2,5	30 30 94 1	50
SZF 1 - 0,6 x 3,5	12 04 51 7	10
ZBF 5:UNPRINTED	08 08 64 2	10
ZB 5:UNPRINTED	10 50 00 4	10

5.2 / 48.5 / 2.2

36.5 / 44

24 / 4 // -

6 / 3

III / I

0.25 - 2.5

0.25 - 2.5

0.5

10

A 3

PA

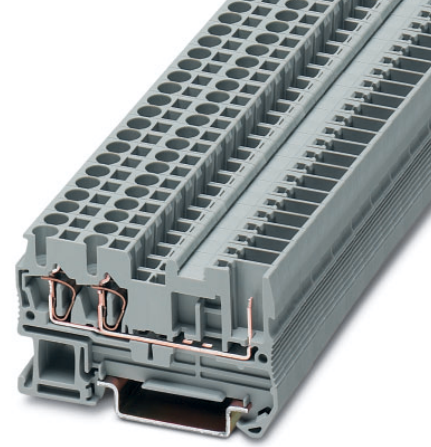
V0

600 / 20 / 26-12

600 / 20 / 26-12

¹⁾ Further colors on request.

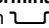



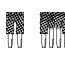



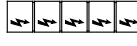
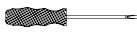
Pluggable Spring Cage Terminal Blocks ST 2,5-TWIN/ 1P



(IEC) [mm ²]	rigid solid	flexible stranded	AWG	I [A]	U [V]
Connection data	0.08-4	0.08-2.5	28-12	24*	500

* The max. load current must not be exceeded by the total current of all connected conductors.

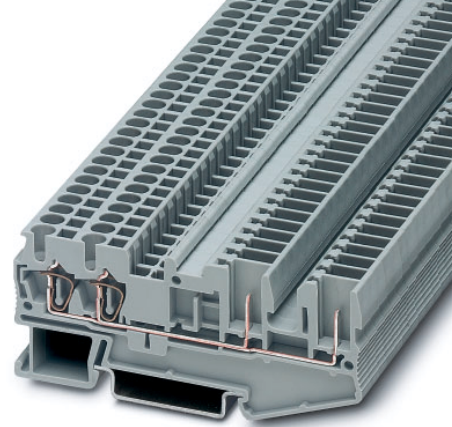
Technical data

Spring cage terminal block, for mounting on 		gray blue	terminal width 5.2 terminal width 5.2
(1) Cover		gray	
(2) Cover segment, serves for covering multi-conductor terminal blocks when two-conductor terminal blocks are aligned		gray	
(3) Insulating stop sleeve, prevents unintentional clamping of the insulation in the case of smaller cross sections	Cross section range:	white gray black	
(4) Plug-in bridge, for cross bridging in the terminal center	2-pos. 3-pos. 4-pos. 5-pos. 10-pos. 20-pos.		
(5) Partition plate, for visual and electrical separation of terminal groups, 2 mm thick			
(6) Test adapter, for 4 mm Ø PS test plug and 4 mm Ø safety test plugs, makes contact in the bridge shaft			
(7) 2.3 mm Ø test plug ¹⁾ , consisting of metal part and red insulating sleeve			
(8) Modular test plug, labeling with ZBF 5			
(9) Coding star, with 4 coding pins, for mounting in all base terminal blocks			
(10) Warning cover, for the actuating ducts of the "mini-spring" ST spring cage terminal blocks			
(11) Screwdriver, for actuating the tension spring			
(12) Zack strip, flat, for center and external labeling,		white	
(13) Zack strip, 10-section, for center labeling,		white	
Dimensions			
Width / length / end cover width			[mm]
Height (NS 35/7,5 / NS 35/15)			[mm]
Technical data in accordance with IEC / DIN VDE			
Maximum // Rated data			[A] / [mm ²]
Rated surge voltage / contamination class			[kV] / -
Surge voltage category / insulation material group			- / -
Connection capacity			
Stranded with ferrule with plastic sleeve			[mm ²]
Stranded with ferrule without plastic sleeve			[mm ²]
Stranded with TWIN ferrule with plastic sleeve			[mm ²]
Stripping length			[mm]
Internal cylindrical gauge (IEC 60 947-1)			
Insulation material			
Inflammability class acc. to UL 94			
Approval data (UL and CSA/CUL)			
Nominal voltage / current / conductor sizes UL: [V] / [A] / AWG			
CSA/CUL: [V] / [A] / AWG			

Type	Order No.	Pcs. Pkt.
ST 2,5-TWIN/ 1P	30 42 11 7	50
ST 2,5-TWIN/ 1P BU	30 42 10 4	50
D-ST 2,5-TWIN	30 30 48 8	50
DS-ST 2,5	30 36 60 2	50
ISH 2,5/0,2	30 02 84 3	50
ISH 2,5/0,5	30 02 85 6	50
ISH 2,5/1	30 02 86 9	50
FBS 2-5	I_{max} : 24 A 30 30 16 1	50
FBS 3-5	24 A 30 30 17 4	50
FBS 4-5	24 A 30 30 18 7	50
FBS 5-5	24 A 30 30 19 0	50
FBS 10-5	24 A 30 30 21 3	10
FBS 20-5	24 A 30 30 22 6	10
ATP-ST-TWIN	30 30 78 9	50
PAI 4	30 30 92 5	10
MPS-RD	02 01 55 3	10
PS 5	30 30 98 3	10
PC	30 40 58 8	50
WST 2,5	30 30 94 1	50
SZF 1 - 0,6 x 3,5	12 04 51 7	10
ZBF 5:UNPRINTED	08 08 64 2	10
ZB 5:UNPRINTED	10 50 00 4	10
	5.2 / 60.5 / 2.2	
	36.5 / 44	
	24 / 4 // -	
	6 / 3	
	III / I	
	0.25 - 2.5	
	0.25 - 2.5	
	0.5	
	10	
	A 3	
	PA	
	V0	
	applied for	
	applied for	

¹⁾ Further colors on request.

Pluggable Spring Cage Terminal Blocks ST 2,5-QUATTRO/ 2P



(IEC) [mm ²]	rigid solid	flexible stranded	AWG	I [A]	U [V]
Connection data	0.08-4	0.08-2.5	28-12	24*	500

* The max. load current must not be exceeded by the total current of all connected conductors.



Technical data

Spring cage terminal block , for mounting on	gray blue	terminal width 5.2 terminal width 5.2	
(1) Cover	gray		
(2) Cover segment , serves for covering multi-conductor terminal blocks when two-conductor terminal blocks are aligned	gray		
(3) Insulating stop sleeve , prevents unintentional clamping of the insulation in the case of smaller cross sections Cross section range:	0.08-0.2 mm ² 0.25-0.5 mm ² 0.75-1 mm ²	white gray black	
(4) Plug-in bridge , for cross bridging in the terminal center	2-pos. 3-pos. 4-pos. 5-pos. 10-pos. 20-pos.		
(5) Partition plate , for visual and electrical separation of terminal groups, 2 mm thick			
(6) Test adapter , for 4 mm Ø PS test plug and 4 mm Ø safety test plugs, makes contact in the bridge shaft			
(7) 2.3 mm Ø test plug 1), consisting of metal part and red insulating sleeve			
(8) Modular test plug , labeling with ZBF 5			
(9) Coding star , with 4 coding pins, for mounting in all base terminal blocks			
(10) Warning cover , for the actuating ducts of the "mini-spring" ST spring cage terminal blocks			
(11) Screwdriver , for actuating the tension spring			
(12) Zack strip , flat, for center and external labeling ,		white	
(13) Zack strip , 10-section, for center labeling,		white	

Dimensions

Width / length / end cover width	[mm]
Height (NS 35/7,5 / NS 35/15)	[mm]

Technical data in accordance with IEC / DIN VDE

Maximum // Rated data	[A] / [mm ²]	24 / 4 // -
Rated surge voltage / contamination class	[kV] / -	6 / 3
Surge voltage category / insulation material group	- / -	III / I

Connection capacity

Stranded with ferrule with plastic sleeve	[mm ²]	0.25 - 2.5
Stranded with ferrule without plastic sleeve	[mm ²]	0.25 - 2.5
Stranded with TWIN ferrule with plastic sleeve	[mm ²]	0.5
Stripping length	[mm]	10

Internal cylindrical gauge (IEC 60 947-1)

Insulation material		PA
Inflammability class acc. to UL 94		V0

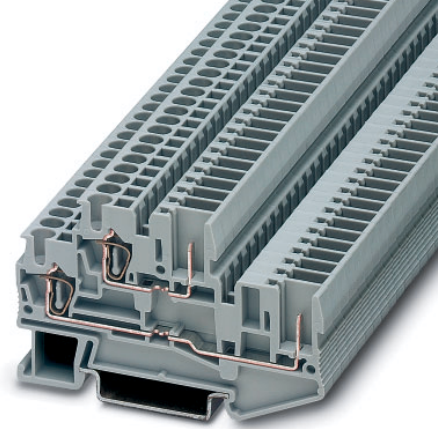
Approval data (UL and CSA/CUL)

Nominal voltage / current / conductor sizes	UL: [V] / [A] / AWG	600 / 20 / 26-12
	CSA/CUL: [V] / [A] / AWG	600 / 20 / 26-12

1). Further colors on request.

Type	Order No.	Pcs. Pkt.
ST 2,5-QUATTRO/ 2P	30 40 03 8	50
ST 2,5-QUATTRO/ 2P BU	30 40 66 9	50
D-ST 2,5-QUATTRO/ 2P	30 40 08 3	50
DS-ST 2,5/P	30 41 01 1	50
ISH 2,5/0,2	30 02 84 3	50
ISH 2,5/0,5	30 02 85 6	50
ISH 2,5/1	30 02 86 9	50
FBS 2-5	I_{max} : 24 A 30 30 16 1	50
FBS 3-5	24 A 30 30 17 4	50
FBS 4-5	24 A 30 30 18 7	50
FBS 5-5	24 A 30 30 19 0	50
FBS 10-5	24 A 30 30 21 3	10
FBS 20-5	24 A 30 30 22 6	10
ATP-ST QUATTRO	30 30 81 5	50
PAI 4	30 30 92 5	10
MPS-RD	02 01 55 3	10
PS 5	30 30 98 3	10
PC	30 40 58 8	50
WST 2,5	30 30 94 1	50
SZF 1 - 0,6 x 3,5	12 04 51 7	10
ZBF 5:UNPRINTED	08 08 64 2	10
ZB 5:UNPRINTED	10 50 00 4	10

Pluggable Spring Cage Terminal Blocks STTB 2,5/ 2P



(IEC) [mm ²]	rigid solid	flexible stranded	AWG	I [A]	U [V]
Connection data	0.08-4	0.08-2.5	28-12	24	500



Technical data

Spring cage terminal block, for mounting on	gray blue	terminal width 5.2 terminal width 5.2	
(1) Cover	gray		
(2) Insulating stop sleeve , prevents unintentional clamping of the insulation in the case of smaller cross sections Cross section range:	0.08-0.2 mm ² 0.25-0.5 mm ² 0.75-1 mm ²	white gray black	
(3) Plug-in bridge , for cross bridging in the terminal center	2-pos. 3-pos. 4-pos. 5-pos. 10-pos. 20-pos.		
(4) Partition plate , for visual and electrical separation of terminal groups, 2 mm thick			
(5) Test adapter , for 4 mm Ø PS test plug and 4 mm Ø safety test plugs, makes contact in the bridge shaft			
(6) 2.3 mm Ø test plug ¹⁾ , consisting of metal part and red insulating sleeve			
(7) Modular test plug , labeling with ZBF 5			
(8) Coding star , with 4 coding pins, for mounting in all base terminal blocks			
(9) Warning cover , for the actuating ducts of the "mini-spring" ST spring cage terminal blocks			
(10) Screwdriver , for actuating the tension spring			
(11) Zack strip , flat, for labeling the outer marker grooves	white		

Dimensions

Width / length / end cover width	[mm]
Height (NS 35/7,5 / NS 35/15)	[mm]

Technical data in accordance with IEC / DIN VDE

Maximum // Rated data	[A] / [mm ²]
Rated surge voltage / contamination class	[kV] / -
Surge voltage category / insulation material group	- / -

Connection capacity

Stranded with ferrule with plastic sleeve	[mm ²]
Stranded with ferrule without plastic sleeve	[mm ²]
Stranded with TWIN ferrule with plastic sleeve	[mm ²]
Stripping length	[mm]

Internal cylindrical gauge (IEC 60 947-1)

Insulation material	
Inflammability class acc. to UL 94	

Approval data (UL and CSA/CUL)

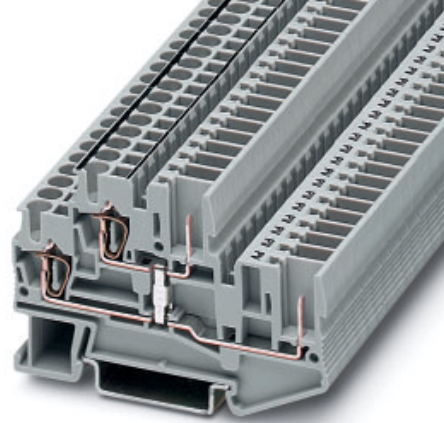
Nominal voltage / current / conductor sizes	UL: [V] / [A] / AWG
	CSA/CUL: [V] / [A] / AWG

Type	Order No.	Pcs. Pkt.
STTB 2,5/ 2P	30 40 05 4	50
STTB 2,5/ 2P BU	30 40 67 2	50
D-STTB 2,5/ 2P	30 40 09 6	50
ISH 2,5/0,2	30 02 84 3	50
ISH 2,5/0,5	30 02 85 6	50
ISH 2,5/1	30 02 86 9	50
FBS 2-5	I_{max} : 24 A	30 30 16 1
FBS 3-5	24 A	30 30 17 4
FBS 4-5	24 A	30 30 18 7
FBS 5-5	24 A	30 30 19 0
FBS 10-5	24 A	30 30 21 3
FBS 20-5	24 A	30 30 22 6
ATP-STTB 4	30 30 74 7	50
PAI 4	30 30 92 5	10
MPS-RD	02 01 55 3	10
PS 5	30 30 98 3	10
PC	30 40 58 8	50
WST 2,5	30 30 94 1	50
SZF 1 - 0,6 x 3,5	12 04 51 7	10
ZBF 5:UNPRINTED	08 08 64 2	10

5.2 / 71.5 / 2.2
47.5 / 55
24 / 4 // 20 / 2.5
6 / 3
III / I
0.25 - 2.5
0.25 - 2.5
0.5
10
A 3
PA
V0
600 / 20 / 26-12
600 / 20 / 26-12

¹⁾ Further colors on request.

Pluggable Spring Cage Terminal Blocks STTB 2,5/ 2P-PV



(IEC) [mm ²]	rigid solid	flexible stranded	AWG	I [A]	U [V]
Connection data	0.08-4	0.08-2.5	28-12	24*	500

* The max. load current must not be exceeded by the total current of all connected conductors.



Technical data

Spring cage terminal block, for mounting on	gray blue	terminal width 5.2 terminal width 5.2	
(1) Cover	gray		
(2) Insulating stop sleeve, prevents unintentional clamping of the insulation in the case of smaller cross sections Cross section range:	0.08-0.2 mm ² 0.25-0.5 mm ² 0.75-1 mm ²	white gray black	
(3) Plug-in bridge, for cross bridging in the terminal center	2-pos. 3-pos. 4-pos. 5-pos. 10-pos. 20-pos.		
(4) Partition plate, for visual and electrical separation of terminal groups, 2 mm thick			
(5) Test adapter, for 4 mm Ø PS test plug and 4 mm Ø safety test plugs, makes contact in the bridge shaft			
(6) 2.3 mm Ø test plug ¹⁾, consisting of metal part and red insulating sleeve			
(7) Modular test plug, labeling with ZBF 5			
(8) Coding star, with 4 coding pins, for mounting in all base terminal blocks			
(9) Warning cover, for the actuating ducts of the "mini-spring" ST spring cage terminal blocks			
(10) Screwdriver, for actuating the tension spring			
(11) Zack strip, flat, for labeling the outer marker grooves	white		

Dimensions

Width / length / end cover width	[mm]
Height (NS 35/7,5 / NS 35/15)	[mm]

Technical data in accordance with IEC / DIN VDE

Maximum // Rated data	[A] / [mm ²]
Rated surge voltage / contamination class	[kV] / -
Surge voltage category / insulation material group	- / -

Connection capacity

Stranded with ferrule with plastic sleeve	[mm ²]
Stranded with ferrule without plastic sleeve	[mm ²]
Stranded with TWIN ferrule with plastic sleeve	[mm ²]

Stripping length	[mm]
-------------------------	------

Internal cylindrical gauge (IEC 60 947-1)	
--	--

Insulation material	
----------------------------	--

Inflammability class acc. to UL 94	
------------------------------------	--

Approval data (UL and CSA/CUL)	
---------------------------------------	--

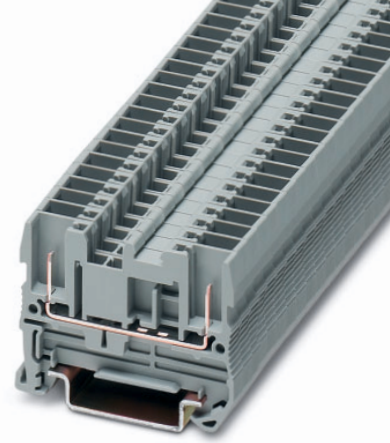
Nominal voltage / current / conductor sizes	UL: [V] / [A] / AWG
	CSA/CUL: [V] / [A] / AWG

¹⁾ Further colors on request.

Type	Order No.	Pcs. Pkt.
STTB 2,5/ 2P-PV	30 40 07 0	50
STTB 2,5/ 2P-PV BU	30 40 68 5	50
D-STTB 2,5/ 2P	30 40 09 6	50
ISH 2,5/0,2	30 02 84 3	50
ISH 2,5/0,5	30 02 85 6	50
ISH 2,5/1	30 02 86 9	50
FBS 2-5	I_{max} : 24 A	30 30 16 1
FBS 3-5	24 A	30 30 17 4
FBS 4-5	24 A	30 30 18 7
FBS 5-5	24 A	30 30 19 0
FBS 10-5	24 A	30 30 21 3
FBS 20-5	24 A	30 30 22 6
ATP-STTB 4	30 30 74 7	50
PAI 4	30 30 92 5	10
MPS-RD	02 01 55 3	10
PS 5	30 30 98 3	10
PC	30 40 58 8	50
WST 2,5	30 30 94 1	50
SZF 1 - 0,6 x 3,5	12 04 51 7	10
ZBF 5:UNPRINTED	08 08 64 2	10

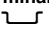
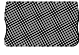




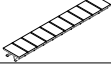
5.2 / 71.5 / 2.2
47.5 / 55
24 / 4 // 20 / 2.5
6 / 3
III / I
0.25 - 2.5
0.25 - 2.5
0.5
10
A 3
PA
V0
600 / 20 / 26-12
600 / 20 / 26-12

Pluggable Spring Cage Terminal Blocks ST 2,5/ 2P



(IEC) [mm ²]	rigid solid	flexible stranded	AWG	I [A]	U [V]
Connection data	0.08-4	0.08-2.5	28-12	24	500

Technical data

Spring cage terminal block, for mounting on 	gray blue	terminal width 5.2 terminal width 5.2	
(1) Cover	gray		
(2) Plug-in bridge, for cross bridging in the terminal center	2-pos. 3-pos. 4-pos. 5-pos. 10-pos. 20-pos.		
(3) Partition plate, for visual and electrical separation of terminal groups, 2 mm thick			
(4) Test adapter, for 4 mm Ø PS test plug and 4 mm Ø safety test plugs, makes contact in the bridge shaft			
(5) 2.3 mm Ø test plug ¹⁾ , consisting of metal part and red insulating sleeve			
(6) Modular test plug, labeling with ZBF 5			
(7) Coding star, with 4 coding pins, for mounting in all base terminal blocks			
(8) Zack strip, for labeling the outer marker grooves, white			

Dimensions

Width / length / end cover width	[mm]
Height (NS 35/7,5 / NS 35/15)	[mm]

Technical data in accordance with IEC / DIN VDE

Maximum load current / cross section	[A] / [mm ²]
Rated surge voltage / contamination class	[kV] / -
Surge voltage category / insulation material group	- / -

Connection capacity

Stranded with ferrule with plastic sleeve	[mm ²]
Stranded with ferrule without plastic sleeve	[mm ²]
Stranded with TWIN ferrule with plastic sleeve	[mm ²]
Stripping length	[mm]

Internal cylindrical gauge (IEC 60 947-1)

Insulation material	
Inflammability class acc. to UL 94	

Approval data (UL and CSA/CUL)

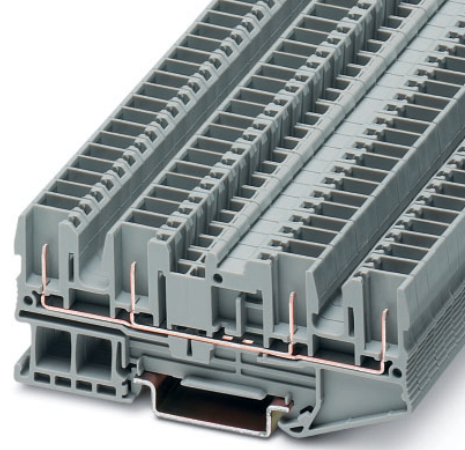
Nominal voltage / current / conductor sizes	UL: [V] / [A] / AWG
	CSA/CUL: [V] / [A] / AWG

¹⁾ Further colors on request.

Type	Order No.	Pcs. Pkt.
ST 2,5/ 2P	30 42 13 3	50
ST 2,5/ 2P BU	30 42 09 4	50
D-ST 2,5	30 30 41 7	50
FBS 2-5	$I_{max.}$: 24 A 30 30 16 1	50
FBS 3-5	24 A 30 30 17 4	50
FBS 4-5	24 A 30 30 18 7	50
FBS 5-5	24 A 30 30 19 0	50
FBS 10-5	24 A 30 30 21 3	10
FBS 20-5	24 A 30 30 22 6	10
ATP-ST 4	30 30 72 1	50
PAI 4	30 30 92 5	10
MPS-RD	02 01 55 3	10
PS 5	30 30 98 3	10
PC	30 40 58 8	50
ZB 5:UNPRINTED	10 50 00 4	10

	5.2 / 48.5 / 2.2
	36.5 / 44
	24 / 4
	6 / 3
	III / I
	0.25 - 2.5
	0.25 - 2.5
	0.5
	-
	-
	PA
	V0
	applied for
	applied for

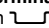


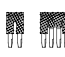



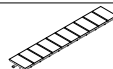
Pluggable Spring Cage Terminal Blocks ST 2,5-QUATTRO/ 4P



(IEC) [mm ²]	rigid solid	flexible stranded	AWG	I [A]	U [V]
Connection data	0.08-4	0.08-2.5	28-12	24*	500

* The max. load current must not be exceeded by the total current of all connected conductors.

Technical data

Spring cage terminal block, for mounting on 	gray blue	terminal width 5.2 terminal width 5.2	
(1) Cover	gray		
(2) Cover segment , serves for covering multi-conductor terminal blocks when two-conductor terminal blocks are aligned	gray		
(3) Plug-in bridge , for cross bridging in the terminal center	2-pos. 3-pos. 4-pos. 5-pos. 10-pos. 20-pos.		
(4) Partition plate , for visual and electrical separation of terminal groups, 2 mm thick			
(5) Test adapter , for 4 mm Ø PS test plug and 4 mm Ø safety test plugs, makes contact in the bridge shaft			
(6) 2.3 mm Ø test plug ¹⁾ , consisting of metal part and red insulating sleeve			
(7) Modular test plug , labeling with ZBF 5			
(8) Coding star , with 4 coding pins, for mounting in all base terminal blocks			
(9) Zack strip , for labeling the outer marker grooves, white			

Dimensions

Width / length / end cover width	[mm]
Height (NS 35/7,5 / NS 35/15)	[mm]

Technical data in accordance with IEC / DIN VDE

Maximum load current / cross section	[A] / [mm ²]
Rated surge voltage / contamination class	[kV] / -
Surge voltage category / insulation material group	- / -

Connection capacity

Stranded with ferrule with plastic sleeve	[mm ²]
Stranded with ferrule without plastic sleeve	[mm ²]
Stranded with TWIN ferrule with plastic sleeve	[mm ²]
Stripping length	[mm]

Internal cylindrical gauge (IEC 60 947-1)

Insulation material

Inflammability class acc. to UL 94

Approval data (UL and CSA/CUL)

Nominal voltage / current / conductor sizes	UL: [V] / [A] / AWG
	CSA/CUL: [V] / [A] / AWG

¹⁾ Further colors on request.

Type	Order No.	Pcs. Pkt.
ST 2,5-QUATTRO/ 4P	30 42 15 9	50
ST 2,5-QUATTRO/ 4P BU	30 42 08 1	50
D-ST 2,5-QUATTRO/4P	30 42 17 5	50
DS-ST 2,5/2P	30 42 33 7	50
FBS 2-5	I_{max} : 24 A	50
FBS 3-5	24 A	50
FBS 4-5	24 A	50
FBS 5-5	24 A	50
FBS 10-5	24 A	10
FBS 20-5	24 A	10
ATP-ST QUATTRO	30 30 81 5	50
PAI 4	30 30 92 5	10
MPS-RD	02 01 55 3	10
PS 5	30 30 98 3	10
PC	30 40 58 8	50
ZB 5:UNPRINTED	10 50 00 4	10

5.2 / 89.5 / 2.2
36.5 / 44
24 / 4
6 / 3
III / I
0.25 - 2.5
0.25 - 2.5
0.5
-
-
PA
V0
applied for
applied for

Pluggable Spring Cage Ground Terminal Blocks ST 2,5/ 1P-PE

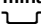
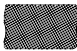



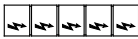





IEC [mm ²]	rigid solid	flexible stranded	AWG
Connection data	0.08-4	0.08-2.5	28-12

Observe the current carrying capacity of the mounting rails.



Technical data

Spring cage terminal block, for mounting on 		green-yellow	terminal width 5.2
(1) Cover		gray	
(2) Insulating stop sleeve, prevents unintentional clamping of the insulation in the case of smaller cross sections Cross section range:		0.08-0.2 mm ² 0.25-0.5 mm ² 0.75-1 mm ²	white gray black 
(3) Partition plate, for visual and electrical separation of terminal groups, 2 mm thick			
(4) Coding star, with 4 coding pins, for mounting in all base terminal blocks			
(5) Warning cover, for the actuating ducts of the "mini-spring" ST spring cage terminal blocks			
(6) Screwdriver, for actuating the tension spring			
(7) Zack strip, flat, for labeling the outer marker grooves	white		
(8) Zack strip, 10-section, for labeling in the terminal center	white		

Dimensions

Width / length / end cover width	[mm]	5.2 / 48.5 / 2.2
Height (NS 35/7,5 / NS 35/15)	[mm]	36.5 / 44

Technical data in accordance with IEC / DIN VDE

Maximum load current / cross section	[A] / [mm ²]	–
Rated surge voltage / contamination class	[kV] / –	6 / 3
Surge voltage category / insulation material group	– / –	III / I

Connection capacity

Stranded with ferrule with plastic sleeve	[mm ²]	0.25 - 2.5
Stranded with ferrule without plastic sleeve	[mm ²]	0.25 - 2.5
Stranded with TWIN ferrule with plastic sleeve	[mm ²]	0.5
Stripping length	[mm]	10

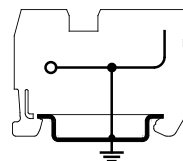
Internal cylindrical gauge (IEC 60 947-1)

Insulation material		A 3
Inflammability class acc. to UL 94		PA V0

Approval data (UL and CSA/CUL)

Nominal voltage / current / conductor sizes	UL: [V] / [A] / AWG	– / – / 26-12
	CSA/CUL: [V] / [A] / AWG	– / – / 26-12

Type	Order No.	Pcs. Pkt.
ST 2,5/ 1P-PE	30 40 02 5	50
D-ST 2,5	30 30 41 7	50
ISH 2,5/0,2	30 02 84 3	50
ISH 2,5/0,5	30 02 85 6	50
ISH 2,5/1	30 02 86 9	50
ATP-ST 4	30 30 72 1	50
PC	30 40 58 8	50
WST 2,5	30 30 94 1	50
SZF 1 - 0,6 x 3,5	12 04 51 7	10
ZBF 5:UNPRINTED	08 08 64 2	10
ZB 5:UNPRINTED	10 50 00 4	10

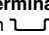


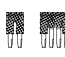


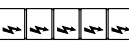

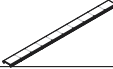



Pluggable Spring Cage Ground Terminal Blocks ST 2,5-TWIN/ 1P-PE



IEC [mm ²]	rigid solid	flexible stranded	AWG
Connection data	0.08-4	0.08-2.5	28-12
Observe the current carrying capacity of the mounting rails.			

Technical data

Spring cage terminal block, for mounting on 		green-yellow	terminal width 5.2
(1) Cover		gray	
(2) Cover segment, serves for covering multi-conductor terminal blocks when two-conductor terminal blocks are aligned		gray	
(3) Insulating stop sleeve, prevents unintentional clamping of the insulation in the case of smaller cross sections Cross section range:		0.08-0.2 mm ² 0.25-0.5 mm ² 0.75-1 mm ²	white gray black
(4) Plug-in bridge, for cross bridging in the terminal center		2-pos. 3-pos. 4-pos. 5-pos. 10-pos. 20-pos.	
(5) Partition plate, for visual and electrical separation of terminal groups, 2 mm thick			
(6) Coding star, with 4 coding pins, for mounting in all base terminal blocks			
(7) Warning cover, for the actuating ducts of the "mini-spring" ST spring cage terminal blocks			
(8) Screwdriver, for actuating the tension spring			
(9) Zack strip, flat, for labeling the outer marker grooves		white	
(10) Zack strip, 10-section, for labeling in the terminal center		white	

Dimensions

Width / length / end cover width	[mm]
Height (NS 35/7,5 / NS 35/15)	[mm]

Technical data in accordance with IEC / DIN VDE

Maximum load current / cross section	[A] / [mm ²]
Rated surge voltage / contamination class	[kV] / -
Surge voltage category / insulation material group	- / -

Connection capacity

Stranded with ferrule with plastic sleeve	[mm ²]
Stranded with ferrule without plastic sleeve	[mm ²]
Stranded with TWIN ferrule with plastic sleeve	[mm ²]

Stripping length

	[mm]
--	------

Internal cylindrical gauge (IEC 60 947-1)

Insulation material

Inflammability class acc. to UL 94

Approval data (UL and CSA/CUL)

Nominal voltage / current / conductor sizes	UL: [V] / [A] / AWG
	CSA/CUL: [V] / [A] / AWG

Type	Order No.	Pcs. Pkt.
ST 2,5-TWIN/ 1P-PE	30 42 12 0	50
D-ST 2,5-TWIN	30 30 48 8	50
DS-ST 2,5	30 36 60 2	50
ISH 2,5/0,2	30 02 84 3	50
ISH 2,5/0,5	30 02 85 6	50
ISH 2,5/1	30 02 86 9	50
FBS 2-5	I_{max} : 24 A	30 30 16 1
FBS 3-5	24 A	30 30 17 4
FBS 4-5	24 A	30 30 18 7
FBS 5-5	24 A	30 30 19 0
FBS 10-5	24 A	30 30 21 3
FBS 20-5	24 A	30 30 22 6
ATP-ST-TWIN	30 30 78 9	50
PC	30 40 58 8	50
WST 2,5	30 30 94 1	50
SZF 1 - 0,6 x 3,5	12 04 51 7	10
ZBF 5:UNPRINTED	08 08 64 2	10
ZB 5:UNPRINTED	10 50 00 4	10

5.2 / 60.5 / 2.2

36.5 / 44

-

6 / 3

III / I

0.25 - 2.5

0.25 - 2.5

0.5

10

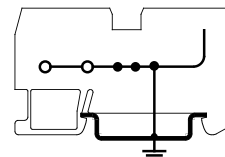
A 3

PA

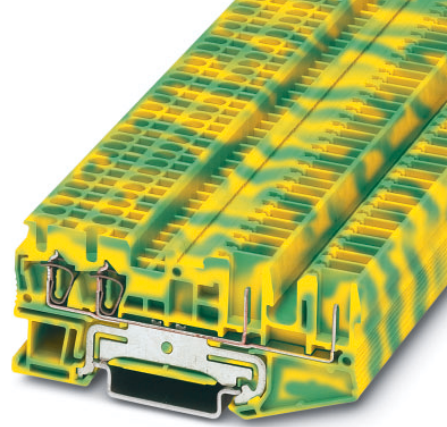
V0

applied for

applied for



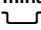
Pluggable Spring Cage Ground Terminal Blocks ST 2,5-QUATTRO/ 2P-PE




IEC [mm ²]	rigid solid	flexible stranded	AWG
Connection data	0.08-4	0.08-2.5	28-12
Observe the current carrying capacity of the mounting rails.			





Technical data


Spring cage terminal block,
for mounting on  green-yellow terminal width 5.2

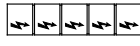
(1) **Cover** gray 

(2) **Cover segment**, serves for covering multi-conductor terminal blocks when two-conductor terminal blocks are aligned gray 

(3) **Insulating stop sleeve**, prevents unintentional clamping of the insulation in the case of smaller cross sections
Cross section range: 0.08-0.2 mm² white
0.25-0.5 mm² gray
0.75-1 mm² black 

(4) **Partition plate**, for visual and electrical separation of terminal groups, 2 mm thick 

(5) **Coding star**, with 4 coding pins, for mounting in all base terminal blocks 

(6) **Warning cover**, for the actuating ducts of the "mini-spring" ST spring cage terminal blocks 

(7) **Screwdriver**, for actuating the tension spring 

(8) **Zack strip**, flat, for labeling the outer marker grooves white 

(9) **Zack strip**, 10-section, for labeling in the terminal center white 

Dimensions

Width / length / end cover width	[mm]	5.2 / 81 / 2.2
Height (NS 35/7,5 / NS 35/15)	[mm]	36.5 / 44

Technical data in accordance with IEC / DIN VDE

Maximum load current / cross section	[A] / [mm ²]	-
Rated surge voltage / contamination class	[kV] / -	6 / 3
Surge voltage category / insulation material group	- / -	III / I

Connection capacity

Stranded with ferrule with plastic sleeve	[mm ²]	0.25 - 2.5
Stranded with ferrule without plastic sleeve	[mm ²]	0.25 - 2.5
Stranded with TWIN ferrule with plastic sleeve	[mm ²]	0.5

Stripping length [mm] 10

Internal cylindrical gauge (IEC 60 947-1) A 3

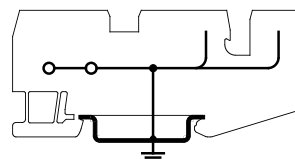
Insulation material

Inflammability class acc. to UL 94 PA

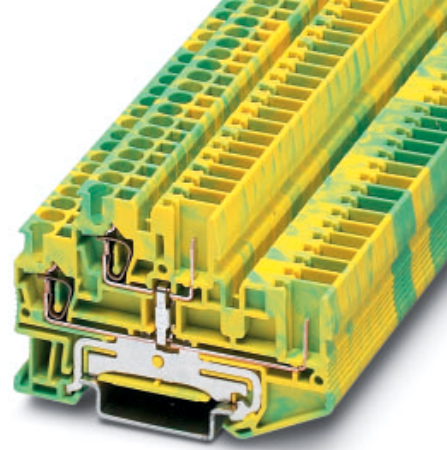
Approval data (UL and CSA/CUL)

Nominal voltage / current / conductor sizes	UL: [V] / [A] / AWG	- / - / 26-12
	CSA/CUL: [V] / [A] / AWG	- / - / 26-12

Type	Order No.	Pcs. Pkt.
ST 2,5-QUATTRO/ 2P-PE	30 40 04 1	50
D-ST 2,5-QUATTRO/ 2P	30 40 08 3	50
DS-ST 2,5/P	30 41 01 1	50
ISH 2,5/0,2	30 02 84 3	50
ISH 2,5/0,5	30 02 85 6	50
ISH 2,5/1	30 02 86 9	50
ATP-ST QUATTRO	30 30 81 5	50
PC	30 40 58 8	50
WST 2,5	30 30 94 1	50
SZF 1 - 0,6 x 3,5	12 04 51 7	10
ZBF 5:UNPRINTED	08 08 64 2	10
ZB 5:UNPRINTED	10 50 00 4	10



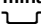
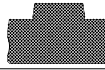

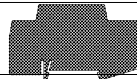


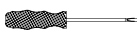

Pluggable Spring Cage Ground Terminal Blocks STTB 2,5/ 2P-PE



(IEC) [mm ²]	rigid solid	flexible stranded	AWG
Connection data	0.08-4	0.08-2.5	28-12
Observe the current carrying capacity of the mounting rails.			



Technical data

Spring cage terminal block, for mounting on 		green-yellow	terminal width 5.2
(1) Cover		gray	
(2) Insulating stop sleeve, prevents unintentional clamping of the insulation in the case of smaller cross sections	Cross section range:		
	0.08-0.2 mm ²	white	
	0.25-0.5 mm ²	gray	
	0.75-1 mm ²	black	
(3) Partition plate, for visual and electrical separation of terminal groups, 2 mm thick			
(4) Coding star, with 4 coding pins, for mounting in all base terminal blocks			
(5) Warning cover, for the actuating ducts of the "mini-spring" ST spring cage terminal blocks			
(6) Screwdriver, for actuating the tension spring			
(7) Zack strip, flat, for labeling the outer marker grooves		white	

Dimensions

Width / length / end cover width	[mm]
Height (NS 35/7,5 / NS 35/15)	[mm]

Technical data in accordance with IEC / DIN VDE

Maximum load current / cross section	[A] / [mm ²]
Rated surge voltage / contamination class	[kV] / -
Surge voltage category / insulation material group	- / -

Connection capacity

Stranded with ferrule with plastic sleeve	[mm ²]
Stranded with ferrule without plastic sleeve	[mm ²]
Stranded with TWIN ferrule with plastic sleeve	[mm ²]
Stripping length	[mm]

Internal cylindrical gauge (IEC 60 947-1)

Insulation material

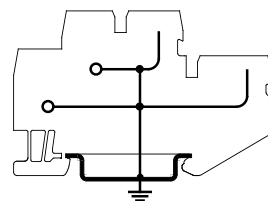
Inflammability class acc. to UL 94

Approval data (UL and CSA/CUL)

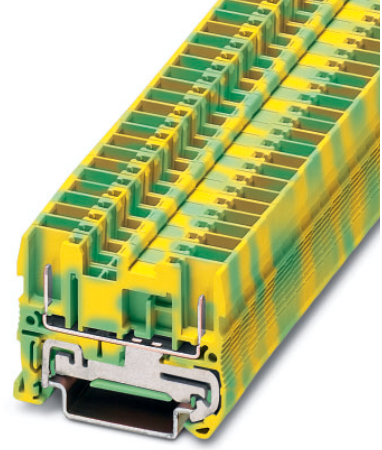
Nominal voltage / current / conductor sizes	UL: [V] / [A] / AWG
	CSA/CUL: [V] / [A] / AWG

Type	Order No.	Pcs. Pkt.
STTB 2,5/ 2P-PE	30 40 06 7	50
D-STTB 2,5/ 2P	30 40 09 6	50
ISH 2,5/0,2	30 02 84 3	50
ISH 2,5/0,5	30 02 85 6	50
ISH 2,5/1	30 02 86 9	50
ATP-STTB 4	30 30 74 7	50
PC	30 40 58 8	50
WST 2,5	30 30 94 1	50
SZF 1 - 0,6 x 3,5	12 04 51 7	10
ZBF 5:UNPRINTED	08 08 64 2	10

5.2 / 71.5 / 2.2
47.5 / 55
-
6 / 3
III / I
0.25 - 2.5
0.25 - 2.5
0.5
10
A 3
PA
V0
- / - / 26-12
- / - / 26-12

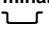





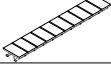


Pluggable Spring Cage Ground Terminal Blocks ST 2,5/ 2P-PE



(IEC) [mm ²]	rigid solid	flexible stranded	AWG
Connection data	0.08-4	0.08-2.5	28-12
Observe the current carrying capacity of the mounting rails.			

Technical data

Spring cage terminal block, for mounting on 		green-yellow	terminal width 5.2
(1) Cover		gray	
(2) Plug-in bridge, for cross bridging in the terminal center	2-pos. 3-pos. 4-pos. 5-pos. 10-pos. 20-pos.		
(3) Partition plate, for visual and electrical separation of terminal groups, 2 mm thick			
(4) Test adapter, for 4 mm Ø PS test plug and 4 mm Ø safety test plugs, makes contact in the bridge shaft			
(5) 2.3 mm Ø test plug ¹⁾ , consisting of metal part and red insulating sleeve			
(6) Modular test plug, labeling with ZBF 5			
(7) Coding star, with 4 coding pins, for mounting in all base terminal blocks			
(8) Zack strip, for labeling the outer marker grooves,		white	

Dimensions

Width / length / end cover width	[mm]
Height (NS 35/7,5 / NS 35/15)	[mm]

Technical data in accordance with IEC / DIN VDE

Maximum load current / cross section	[A] / [mm ²]
Rated surge voltage / contamination class	[kV] / -
Surge voltage category / insulation material group	- / -

Connection capacity

Stranded with ferrule with plastic sleeve	[mm ²]
Stranded with ferrule without plastic sleeve	[mm ²]
Stranded with TWIN ferrule with plastic sleeve	[mm ²]
Stripping length	[mm]

Internal cylindrical gauge (IEC 60 947-1)

Insulation material	
Inflammability class acc. to UL 94	

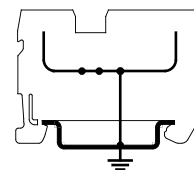
Approval data (UL and CSA/CUL)

Nominal voltage / current / conductor sizes	UL: [V] / [A] / AWG
	CSA/CUL: [V] / [A] / AWG

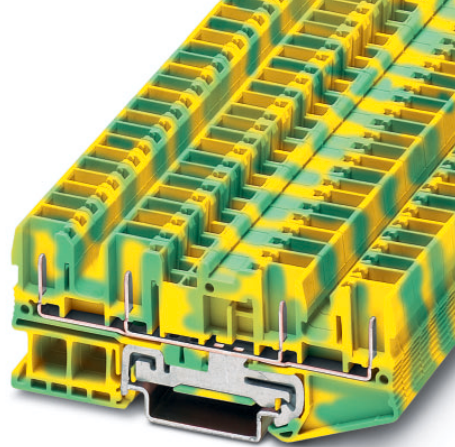
¹⁾ Further colors on request.

Type	Order No.	Pcs. Pkt.
ST 2,5/ 2P-PE	30 42 14 6	50
D-ST 2,5	30 30 41 7	50
FBS 2-5	30 30 16 1	50
FBS 3-5	30 30 17 4	50
FBS 4-5	30 30 18 7	50
FBS 5-5	30 30 19 0	50
FBS 10-5	30 30 21 3	10
FBS 20-5	30 30 22 6	10
ATP-ST 4	30 30 72 1	50
PAI 4	30 30 92 5	10
MPS-RD	02 01 55 3	10
PS 5	30 30 98 3	10
PC	30 40 58 8	50
ZB 5:UNPRINTED	10 50 00 4	10

	5.2 / 48.5 / 2.2
	36.5 / 44
	-
	6 / 3
	III / I
	0.25 - 2.5
	0.25 - 2.5
	0.5
	-
	-
	PA
	V0
	applied for
	applied for



Pluggable Spring Cage Ground Terminal Blocks ST 2,5-QUATTRO/ 4P-PE



IEC [mm ²]	rigid solid	flexible stranded	AWG
Connection data	0.08-4	0.08-2.5	28-12
Observe the current carrying capacity of the mounting rails.			

Technical data

Spring cage terminal block,
for mounting on green-yellow terminal width 5.2

(1) Cover	gray	
(2) Cover segment , serves for covering multi-conductor terminal blocks when two-conductor terminal blocks are aligned	gray	
(3) Plug-in bridge , for cross bridging in the terminal center	2-pos. 3-pos. 4-pos. 5-pos. 10-pos. 20-pos.	
(4) Partition plate , for visual and electrical separation of terminal groups, 2 mm thick		
(5) Test adapter , for 4 mm Ø PS test plug and 4 mm Ø safety test plugs, makes contact in the bridge shaft		
(6) 2.3 mm Ø test plug ¹⁾ , consisting of metal part and red insulating sleeve		
(7) Modular test plug , labeling with ZBF 5		
(8) Coding star , with 4 coding pins, for mounting in all base terminal blocks		
(9) Zack strip , for labeling the outer marker grooves	white	

Dimensions

Width / length / end cover width	[mm]
Height (NS 35/7,5 / NS 35/15)	[mm]

Technical data in accordance with IEC / DIN VDE

Maximum load current / cross section	[A] / [mm ²]
Rated surge voltage / contamination class	[kV] / -
Surge voltage category / insulation material group	- / -

Connection capacity

Stranded with ferrule with plastic sleeve	[mm ²]
Stranded with ferrule without plastic sleeve	[mm ²]
Stranded with TWIN ferrule with plastic sleeve	[mm ²]
Stripping length	[mm]

Internal cylindrical gauge (IEC 60 947-1)

Insulation material

Inflammability class acc. to UL 94

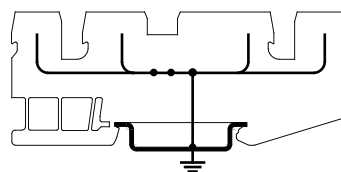
Approval data (UL and CSA/CUL)

Nominal voltage / current / conductor sizes	UL: [V] / [A] / AWG
	CSA/CUL: [V] / [A] / AWG

¹⁾ Further colors on request.

Type	Order No.	Pcs. Pkt.
ST 2,5-QUATTRO/ 4P-PE	30 42 16 2	50
D-ST 2,5-QUATTRO/4P	30 42 17 5	50
DS-ST 2,5/2P	30 42 33 7	50
FBS 2-5	30 30 16 1	50
FBS 3-5	30 30 17 4	50
FBS 4-5	30 30 18 7	50
FBS 5-5	30 30 19 0	50
FBS 10-5	30 30 21 3	10
FBS 20-5	30 30 22 6	10
ATP-ST QUATTRO	30 30 81 5	50
PAI 4	30 30 92 5	10
MPS-RD	02 01 55 3	10
PS 5	30 30 98 3	10
PC	30 40 58 8	50
ZB 5:UNPRINTED	10 50 00 4	10

5.2 / 89.5 / 2.2
36.5 / 44
-
6 / 3
III / I
0.25 - 2.5
0.25 - 2.5
0.5
-
-
PA
V0
applied for
applied for



ST-COMBI Receptacles

SC 2,5/...



(IEC) [mm ²]	rigid solid	flexible stranded	AWG	I [A]	U [V]
Connection data	0.08-4	0.08-2.5	28-12	24	500

Technical data

ST-COMBI receptacle, single, not bridgeable, 5.2 mm wide	Color	Positions
	gray	2-pos.
	gray	3-pos.
	gray	4-pos.
	gray	5-pos.
	gray	6-pos.
	gray	7-pos.
	gray	8-pos.
	gray	9-pos.
	gray	10-pos.
	gray	11-pos.
	gray	12-pos.
	gray	13-pos.
	gray	14-pos.
	gray	15-pos.

(1) **Insulating stop sleeve**, prevents unintentional clamping of the insulation in the case of smaller cross sections
Cross section range:

0.08-0.2 mm ²	white
0.25-0.5 mm ²	gray
0.75-1 mm ²	black

(2) **Strain relief**,

black	2-pos.
black	4-pos.

(3) **Zack strip**, flat,
for labeling the outer marker grooves

white

Technical data in accordance with IEC / DIN VDE

Maximum load current / cross section	[A] / [mm ²]	24 / 4
Rated surge voltage / contamination class	[kV] / -	6 / 3
Surge voltage category / insulation material group	- / -	III / I

Connection capacity

Stranded with ferrule with plastic sleeve	[mm ²]	0.25 - 2.5
Stranded with ferrule without plastic sleeve	[mm ²]	0.25 - 2.5
Stranded with TWIN ferrule with plastic sleeve	[mm ²]	0.5
Stripping length	[mm]	10

Internal cylindrical gauge (IEC 60 947-1)

Insulation material	PA
Inflammability class acc. to UL 94	V0

Approval data (UL and CSA/CUL)

Nominal voltage / current / conductor sizes	UL: [V] / [A] / AWG	applied for
	CSA/CUL: [V] / [A] / AWG	applied for

Type	Order No.	Pcs. Pkt.
SC 2,5/2	30 41 31 2	50
SC 2,5/3	30 42 26 9	50
SC 2,5/4	30 42 27 2	50
SC 2,5/5	30 42 28 5	50
SC 2,5/6	30 42 29 8	25
SC 2,5/7	30 41 36 7	25
SC 2,5/8	30 42 30 8	25
SC 2,5/9	30 41 38 3	25
SC 2,5/10	30 42 31 1	25
SC 2,5/11	30 41 40 6	10
SC 2,5/12	30 42 32 4	10
SC 2,5/13	30 41 42 2	10
SC 2,5/14	30 41 43 5	10
SC 2,5/15	30 41 44 8	10
ISH 2,5/0,2	30 02 84 3	50
ISH 2,5/0,5	30 02 85 6	50
ISH 2,5/1	30 02 86 9	50
PDZ/2	30 40 56 2	50
PDZ/4	30 40 57 5	50
ZBF 5:UNPRINTED	08 08 64 2	10

ST-COMBI Receptacles

SC 2,5-RZ/...



(IEC) [mm ²]	rigid solid	flexible stranded	AWG	I [A]	U [V]
Connection data	0.08-4	0.08-2.5	28-12	24	500

Technical data

ST-COMBI receptacle, single, not bridgeable, 5.2 mm wide with engagement pin	Color	Positions
	gray	2-pos.
	gray	3-pos.
	gray	4-pos.
	gray	5-pos.
	gray	6-pos.
	gray	7-pos.
	gray	8-pos.
	gray	9-pos.
	gray	10-pos.
	gray	11-pos.
	gray	12-pos.
	gray	13-pos.
	gray	14-pos.
	gray	15-pos.

(1) **Insulating stop sleeve**, prevents unintentional clamping of the insulation in the case of smaller cross sections
 Cross section range:

0.08-0.2 mm ²	white
0.25-0.5 mm ²	gray
0.75-1 mm ²	black

(2) **Strain relief**,

black	2-pos.
black	4-pos.

(3) **Zack strip**, flat, for labeling the outer marker grooves

white

Technical data in accordance with IEC / DIN VDE

Maximum load current / cross section	[A] / [mm ²]	24 / 4
Rated surge voltage / contamination class	[kV] / -	6 / 3
Surge voltage category / insulation material group	- / -	III / I

Connection capacity

Stranded with ferrule with plastic sleeve	[mm ²]	0.25 - 2.5
Stranded with ferrule without plastic sleeve	[mm ²]	0.25 - 2.5
Stranded with TWIN ferrule with plastic sleeve	[mm ²]	0.5
Stripping length	[mm]	10

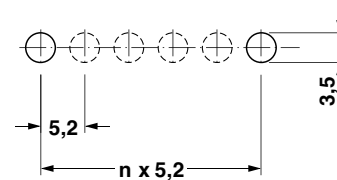
Internal cylindrical gauge (IEC 60 947-1)

Insulation material	PA
Inflammability class acc. to UL 94	V0

Approval data (UL and CSA/CUL)

Nominal voltage / current / conductor sizes	UL: [V] / [A] / AWG	applied for
	CSA/CUL: [V] / [A] / AWG	applied for

Type	Order No.	Pcs. Pkt.
SC 2,5-RZ/2	30 41 51 6	50
SC 2,5-RZ/3	30 41 52 9	50
SC 2,5-RZ/4	30 41 53 6	50
SC 2,5-RZ/5	30 41 54 5	50
SC 2,5-RZ/6	30 41 55 8	25
SC 2,5-RZ/7	30 41 56 1	25
SC 2,5-RZ/8	30 41 57 4	25
SC 2,5-RZ/9	30 41 59 0	25
SC 2,5-RZ/10	30 41 58 7	25
SC 2,5-RZ/11	30 41 60 0	10
SC 2,5-RZ/12	30 41 61 3	10
SC 2,5-RZ/13	30 41 62 6	10
SC 2,5-RZ/14	30 41 63 9	10
SC 2,5-RZ/15	30 41 64 2	10
ISH 2,5/0,2	30 02 84 3	50
ISH 2,5/0,5	30 02 85 6	50
ISH 2,5/1	30 02 86 9	50
PDZ/2	30 40 56 2	50
PDZ/4	30 40 57 5	50
ZBF 5:UNPRINTED	08 08 64 2	10



Drilling plan: SC 2,5-RZ...
 Example: 1 x SC 2,5-RZ/6
 Plate thickness: 0.8-1.5 mm

ST-COMBI Receptacles for Self-Assembly

With the ST-COMBI receptacles for self-assembly, we offer a solution for every task and it can be implemented by the user himself. The receptacle is assembled directly on site by snapping together one-position receptacle elements.

For receptacle types SC 2,5/1-L and SC 2,5-RZ/1-L, one-position base versions are available in gray, blue and green-yellow.

Structure of a receptacle

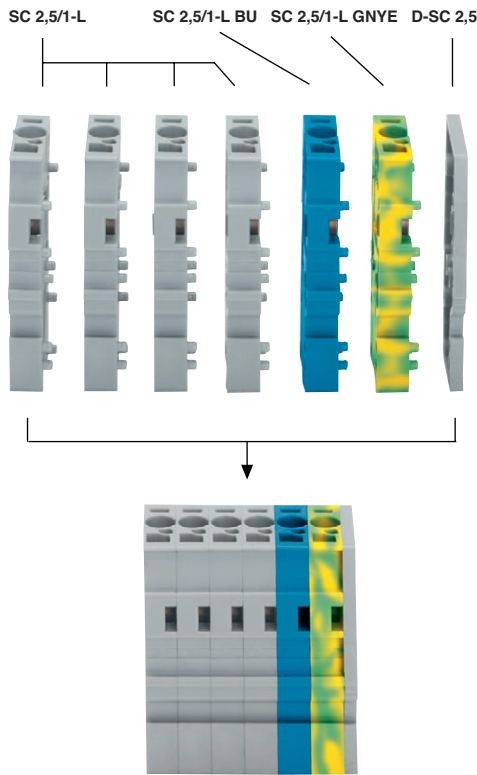
For multi-position receptacles, the corresponding number of one-position receptacle elements and a cover are required. The individual receptacle elements and the cover are connected by pushing them together and are held by the engagement pins.

When mounting receptacles with engagement pins, an element with an engagement pin should be mounted at the beginning and end of the receptacle. For longer receptacles, we recommend that an element with engagement pin is used after at least every 6th position.

To ensure a secure fit, the bore holes must be burr-free.

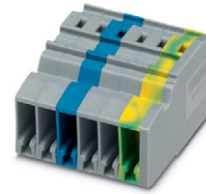
Example for the structure of a 6-position receptacle:

:



ST-COMBI Receptacles

SC 2,5/1-L




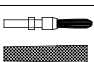
(IEC) [mm ²]	rigid solid	flexible stranded	AWG	I [A]	U [V]
Connection data	0.08-4	0.08-2.5	28-12	24	500


Technical data

ST-COMBI receptacle , single, not bridgeable, 5.2 mm wide	gray	1-pos.
	blue	1-pos.
	green-yellow	1-pos.

(1) Cover ,	gray	
--------------------	------	---

(2) Insulating stop sleeve , prevents unintentional clamping of the insulation in the case of smaller cross sections	
Cross section range:	white
0.08-0.2 mm ²	gray
0.25-0.5 mm ²	black
0.75-1 mm ²	

(3) 2.3 mm Ø test plugs ¹⁾ , consisting of metal part and red insulating sleeve	
--	---

(4) Warning cover , for the actuating ducts of the "mini-spring" ST spring cage terminal blocks	
--	---

(5) Strain relief ,	black	2-pos.
	black	4-pos.

(6) Screwdriver , for actuating the tension spring	
--	---

(7) Zack strip , flat, for labeling the outer marker grooves	white	
--	-------	---

Technical data in accordance with IEC / DIN VDE

Maximum load current / cross section	[A] / [mm ²]	24 / 4
Rated surge voltage / contamination class	[kV] / -	6 / 3
Surge voltage category / insulation material group	- / -	III / I

Connection capacity

Stranded with ferrule with plastic sleeve	[mm ²]	0.25 - 2.5
Stranded with ferrule without plastic sleeve	[mm ²]	0.25 - 2.5
Stranded with TWIN ferrule with plastic sleeve	[mm ²]	0.5

Stripping length	[mm]	10
-------------------------	------	----

Internal cylindrical gauge (IEC 60 947-1)		A 3
--	--	-----

Insulation material		PA
----------------------------	--	----

Inflammability class acc. to UL 94		V0
------------------------------------	--	----

Approval data (UL and CSA/CUL)

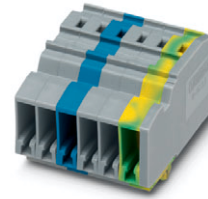
Nominal voltage / current / conductor sizes	UL: [V] / [A] / AWG	applied for
	CSA/CUL: [V] / [A] / AWG	applied for

Type	Order No.	Pcs. Pkt.
SC 2,5/1-L	30 42 18 8	50
SC 2,5/1-L BU	30 42 19 1	50
SC 2,5/1-L GNYE	30 42 20 1	50
D-SC 2,5	30 42 24 3	50
ISH 2,5/0,2	30 02 84 3	50
ISH 2,5/0,5	30 02 85 6	50
ISH 2,5/1	30 02 86 9	50
MPS-RD	02 01 55 3	10
WST 2,5	30 30 94 1	50
PDZ/2	30 40 56 2	50
PDZ/4	30 40 57 5	50
SZF 1 - 0,6 x 3,5	12 04 51 7	10
ZBF 5:UNPRINTED	08 08 64 2	10

¹⁾ Further colors on request.

ST-COMBI Receptacles

SC 2,5-RZ/1-L





(IEC) [mm ²]	rigid solid	flexible stranded	AWG	I [A]	U [V]
Connection data	0.08-4	0.08-2.5	28-12	24	500


Technical data

ST-COMBI receptacle , single, not bridgeable, 5.2 mm wide with engagement pin	gray	1-pos.
	blue	1-pos.
	green-yellow	1-pos.

(1) Cover ,	gray	
--------------------	------	---

(2) Insulating stop sleeve , prevents unintentional clamping of the insulation in the case of smaller cross sections	
Cross section range:	
0.08-0.2 mm ²	white
0.25-0.5 mm ²	gray
0.75-1 mm ²	black

(3) 2.3 mm Ø test plugs ¹⁾ , consisting of metal part and red insulating sleeve	
--	---

(4) Warning cover , for the actuating ducts of the "mini-spring" ST spring cage terminal blocks	
--	---

(5) Strain relief ,	black	2-pos.
	black	4-pos.

(6) Screwdriver , for actuating the tension spring	
--	---

(7) Zack strip , flat, for labeling the outer marker grooves	white	
--	-------	---

Technical data in accordance with IEC / DIN VDE

Maximum load current / cross section	[A] / [mm ²]
Rated surge voltage / contamination class	[kV] / -
Surge voltage category / insulation material group	- / -

Connection capacity

Stranded with ferrule with plastic sleeve	[mm ²]
Stranded with ferrule without plastic sleeve	[mm ²]
Stranded with TWIN ferrule with plastic sleeve	[mm ²]

Stripping length	[mm]
-------------------------	------

Internal cylindrical gauge (IEC 60 947-1)	
--	--

Insulation material	
----------------------------	--

Inflammability class acc. to UL 94	
------------------------------------	--

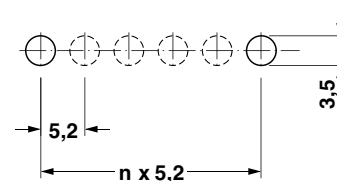
Approval data (UL and CSA/CUL)	
---------------------------------------	--

Nominal voltage / current / conductor sizes	UL: [V] / [A] / AWG
	CSA/CUL: [V] / [A] / AWG

Type	Order No.	Pcs. Pkt.
SC 2,5-RZ/1-L	30 42 21 4	50
SC 2,5-RZ/1-L BU	30 42 22 7	50
SC 2,5-RZ/1-L GNYE	30 42 23 0	50
D-SC 2,5	30 42 24 3	50
ISH 2,5/0,2	30 02 84 3	50
ISH 2,5/0,5	30 02 85 6	50
ISH 2,5/1	30 02 86 9	50
MPS-RD	02 01 55 3	10
WST 2,5	30 30 94 1	50
PDZ/2	30 40 56 2	50
PDZ/4	30 40 57 5	50
SZF 1 - 0,6 x 3,5	12 04 51 7	10
ZBF 5:UNPRINTED	08 08 64 2	10

	24 / 4
	6 / 3
	III / I
	0.25 - 2.5
	0.25 - 2.5
	0.5
	10
	A 3
	PA
	V0
	applied for
	applied for

¹⁾ Further colors on request.



Drilling plan: SC 2,5-RZ...
Example: 6 x SC 2,5-RZ/1-L
Plate thickness: 0.8-1.5 mm

ST-COMBI Plugs

SP 2,5



(IEC) [mm ²]	rigid solid	flexible stranded	AWG	I [A]	U [V]
Connection data	0.08-4	0.08-2.5	28-12	24	500



Technical data

ST-COMBI plug, single,
not bridgeable, 5.2 mm wide

gray	1-pos.
gray	2-pos.
gray	3-pos.
gray	4-pos.
gray	5-pos.
gray	6-pos.
gray	7-pos.
gray	8-pos.
gray	9-pos.
gray	10-pos.
gray	11-pos.
gray	12-pos.
gray	13-pos.
gray	14-pos.
gray	15-pos.
blue	1-pos.
green-yellow	1-pos.

(1) **Insulating stop sleeve**, prevents unintentional clamping of the insulation in the case of smaller cross sections

Cross section range:	0.08-0.2 mm ²	white
	0.25-0.5 mm ²	gray
	0.75-1 mm ²	black

(2) **Strain relief**, black 2-pos. black 4-pos.

(3) **Snap-lock fitting**, for all plugs orange 1-pos. orange 2-pos.

(4) **Snap-lock fitting and strain relief**, for all connectors orange 2-pos.

(5) **Shielding**, for mounting on PZ/... and PRZ, for shielded conductors with 3-6 mm Ø 5-10 mm Ø

(6) **Zack strip**, flat, for labeling the outer marker grooves white

Technical data in accordance with IEC / DIN VDE

Maximum load current / cross section	[A] / [mm ²]	24 / 4
Rated surge voltage / contamination class	[kV] / -	6 / 3
Surge voltage category / insulation material group	- / -	III / I
Connection capacity		
Stranded with ferrule with plastic sleeve	[mm ²]	0.25 - 2.5
Stranded with ferrule without plastic sleeve	[mm ²]	0.25 - 2.5
Stranded with TWIN ferrule with plastic sleeve	[mm ²]	0.5
Stripping length	[mm]	10
Internal cylindrical gauge (IEC 60 947-1)		A 3
Insulation material		PA
Inflammability class acc. to UL 94		V0
Approval data (UL and CSA/CUL)		
Nominal voltage / current / conductor sizes	UL: [V] / [A] / AWG	600 / 20 / 26-12
	CSA/CUL: [V] / [A] / AWG	600 / 20 / 26-12

Type	Order No.	Pcs. Pkt.
SP 2,5/1	30 40 25 8	50
SP 2,5/2	30 40 26 1	50
SP 2,5/3	30 40 27 4	50
SP 2,5/4	30 40 28 7	50
SP 2,5/5	30 40 29 0	50
SP 2,5/6	30 40 30 0	25
SP 2,5/7	30 40 31 3	25
SP 2,5/8	30 40 32 6	25
SP 2,5/9	30 40 33 9	25
SP 2,5/10	30 40 34 2	25
SP 2,5/11	30 40 35 5	10
SP 2,5/12	30 40 36 8	10
SP 2,5/13	30 40 37 1	10
SP 2,5/14	30 40 38 4	10
SP 2,5/15	30 40 39 7	10
SP 2,5/1 BU	30 40 69 8	50
SP 2,5/1 GNYE	30 40 70 8	50
ISH 2,5/0,2	30 02 84 3	50
ISH 2,5/0,5	30 02 85 6	50
ISH 2,5/1	30 02 86 9	50
PZ/2	30 40 62 7	50
PZ/4	30 40 64 3	50
PR	30 40 55 9	50
PR/2	30 40 63 0	50
PRZ	30 40 61 4	50
PSH 3-6	30 40 59 1	50
PSH 5-10	30 40 60 1	50
ZBF 5:UNPRINTED	08 08 64 2	10

ST-COMBI Plugs

SPB 2,5



(IEC) [mm ²]	rigid solid	flexible stranded	AWG	I [A]	U [V]
Connection data	0.08-4	0.08-2.5	28-12	24	500



Technical data

			Type	Order No.	Pcs. Pkt.
ST-COMBI plug , single, bridgeable, 5.2 mm wide	gray	1-pos.	SPB 2,5/1	30 40 10 6	50
	gray	2-pos.	SPB 2,5/2	30 40 11 9	50
	gray	3-pos.	SPB 2,5/3	30 40 12 2	50
	gray	4-pos.	SPB 2,5/4	30 40 13 5	50
	gray	5-pos.	SPB 2,5/5	30 40 14 3	50
	gray	6-pos.	SPB 2,5/6	30 40 15 1	25
	gray	7-pos.	SPB 2,5/7	30 40 16 4	25
	gray	8-pos.	SPB 2,5/8	30 40 17 7	25
	gray	9-pos.	SPB 2,5/9	30 40 18 0	25
	gray	10-pos.	SPB 2,5/10	30 40 19 3	25
	gray	11-pos.	SPB 2,5/11	30 40 20 3	10
	gray	12-pos.	SPB 2,5/12	30 40 21 6	10
	gray	13-pos.	SPB 2,5/13	30 40 22 9	10
	gray	14-pos.	SPB 2,5/14	30 40 23 2	10
	gray	15-pos.	SPB 2,5/15	30 40 24 5	10
blue	1-pos.	SPB 2,5/1 BU	30 40 72 4	50	
green-yellow	1-pos.	SPB 2,5/1 GNYE	30 40 71 1	50	
(1) Plug-in bridge , for cross bridging in the bridge shaft	2-pos.		FBS 2-5	$I_{max}: 24 A$ 30 30 16 1	50
	3-pos.		FBS 3-5	24 A 30 30 17 4	50
	4-pos.		FBS 4-5	24 A 30 30 18 7	50
	5-pos.		FBS 5-5	24 A 30 30 19 0	50
	10-pos.		FBS 10-5	24 A 30 30 21 3	10
	20-pos.		FBS 20-5	24 A 30 30 22 6	10
(2) Insulating stop sleeve , prevents unintentional clamping of the insulation in the case of smaller cross sections Cross section range:	0.08-0.2 mm ²	white	ISH 2,5/0,2	30 02 84 3	50
	0.25-0.5 mm ²	gray	ISH 2,5/0,5	30 02 85 6	50
	0.75-1 mm ²	black	ISH 2,5/1	30 02 86 9	50
(3) Strain relief ,	black	2-pos.	PZ/2	30 40 62 7	50
	black	4-pos.	PZ/4	30 40 64 3	50
(4) Snap-lock fitting , for all plugs	orange	1-pos.	PR	30 40 55 9	50
	orange	2-pos.	PR/2	30 40 63 0	50
(5) Snap-lock fitting and strain relief , for all plugs	orange	2-pos.	PRZ	30 40 61 4	50
(6) Shielding , for mounting on PZ/... and PRZ, for shielded conductors with	3-6 mm Ø		PSH 3-6	30 40 59 1	50
	5-10 mm Ø		PSH 5-10	30 40 60 1	50
(7) Zack strip , flat, for labeling the outer marker grooves	white		ZBF 5:UNPRINTED	08 08 64 2	10
Technical data in accordance with IEC / DIN VDE					
Maximum load current / cross section	[A] / [mm ²]			24 / 4	
Rated surge voltage / contamination class	[kV] / -			6 / 3	
Surge voltage category / insulation material group	- / -			III / I	
Connection capacity					
Stranded with ferrule with plastic sleeve	[mm ²]			0.25 - 2.5	
Stranded with ferrule without plastic sleeve	[mm ²]			0.25 - 2.5	
Stranded with TWIN ferrule with plastic sleeve	[mm ²]			0.5	
Stripping length	[mm]			10	
Internal cylindrical gauge (IEC 60 947-1)				A 3	
Insulation material				PA	
Inflammability class acc. to UL 94				V0	
Approval data (UL and CSA/CUL)					
Nominal voltage / current / conductor sizes	UL: [V] / [A] / AWG			600 / 20 / 26-12	
	CSA/CUL: [V] / [A] / AWG			600 / 20 / 26-12	

ST-COMBI Plugs

SPDB 2,5



(IEC) [mm ²]	rigid solid	flexible stranded	AWG	I [A]	U [V]
Connection data	0.08-4	0.08-2.5	28-12	24	500



Technical data

Color	Positions
gray	1-pos.
gray	2-pos.
gray	3-pos.
gray	4-pos.
gray	5-pos.
gray	6-pos.
gray	7-pos.
gray	8-pos.
gray	9-pos.
gray	10-pos.
gray	11-pos.
gray	12-pos.
gray	13-pos.
gray	14-pos.
gray	15-pos.
blue	1-pos.
green-yellow	1-pos.

(1) Plug-in bridge , for cross bridging in the bridge shaft	2-pos.	
	3-pos.	
	4-pos.	
	5-pos.	
	10-pos.	
	20-pos.	

(2) Insulating stop sleeve , prevents unintentional clamping of the insulation in the case of smaller cross sections Cross section range:	0.08-0.2 mm ²	white
	0.25-0.5 mm ²	gray
	0.75-1 mm ²	black

(3) Strain relief ,	black	2-pos.
	black	4-pos.

(4) Snap-lock fitting , for all plugs	orange	1-pos.
	orange	2-pos.

(5) Snap-lock fitting and strain relief , for all plugs	orange	2-pos.
--	--------	--------

(6) Shielding , for mounting on PZ/... and PRZ, for shielded conductors with	3-6 mm Ø	
	5-10 mm Ø	

(7) Zack strip , flat, for labeling the outer marker grooves	white	

Technical data in accordance with IEC / DIN VDE

Maximum load current / cross section	[A] / [mm ²]	24 / 4
Rated surge voltage / contamination class	[kV] / -	6 / 3
Surge voltage category / insulation material group	- / -	III / I

Connection capacity

Stranded with ferrule with plastic sleeve	[mm ²]	0.25 - 2.5
Stranded with ferrule without plastic sleeve	[mm ²]	0.25 - 2.5
Stranded with TWIN ferrule with plastic sleeve	[mm ²]	0.5

Stripping length	[mm]	10
-------------------------	------	----

Internal cylindrical gauge (IEC 60 947-1)		A 3
--	--	-----

Insulation material		PA
----------------------------	--	----

Inflammability class acc. to UL 94		V0
------------------------------------	--	----

Approval data (UL and CSA/CUL)

Nominal voltage / current / conductor sizes	UL: [V] / [A] / AWG	600 / 20 / 26-12
	CSA/CUL: [V] / [A] / AWG	600 / 20 / 26-12

Type	Order No.	Pcs. Pkt.
SPDB 2,5/1	30 40 40 7	50
SPDB 2,5/2	30 40 41 0	50
SPDB 2,5/3	30 40 42 3	50
SPDB 2,5/4	30 40 43 6	50
SPDB 2,5/5	30 40 44 9	50
SPDB 2,5/6	30 40 45 2	25
SPDB 2,5/7	30 40 46 5	25
SPDB 2,5/8	30 40 47 8	25
SPDB 2,5/9	30 40 48 1	25
SPDB 2,5/10	30 40 49 4	25
SPDB 2,5/11	30 40 50 4	10
SPDB 2,5/12	30 40 51 7	10
SPDB 2,5/13	30 40 52 0	10
SPDB 2,5/14	30 40 53 3	10
SPDB 2,5/15	30 40 54 6	10
SPDB 2,5/1 BU	30 40 73 7	50
SPDB 2,5/1 GNYE	30 40 74 0	50
FBS 2-5	I _{max} : 24 A 30 30 16 1	50
FBS 3-5	24 A 30 30 17 4	50
FBS 4-5	24 A 30 30 18 7	50
FBS 5-5	24 A 30 30 19 0	50
FBS 10-5	24 A 30 30 21 3	10
FBS 20-5	24 A 30 30 22 6	10
ISH 2,5/0,2	30 02 84 3	50
ISH 2,5/0,5	30 02 85 6	50
ISH 2,5/1	30 02 86 9	50
PDZ/2	30 40 56 2	50
PDZ/4	30 40 57 5	50
PR	30 40 55 9	50
PR/2	30 40 63 0	50
PRZ	30 40 61 4	50
PSH 3-6	30 40 59 1	50
PSH 5-10	30 40 60 1	50
ZBF 5:UNPRINTED	08 08 64 2	10

ST-COMBI Plugs for Self-Assembly

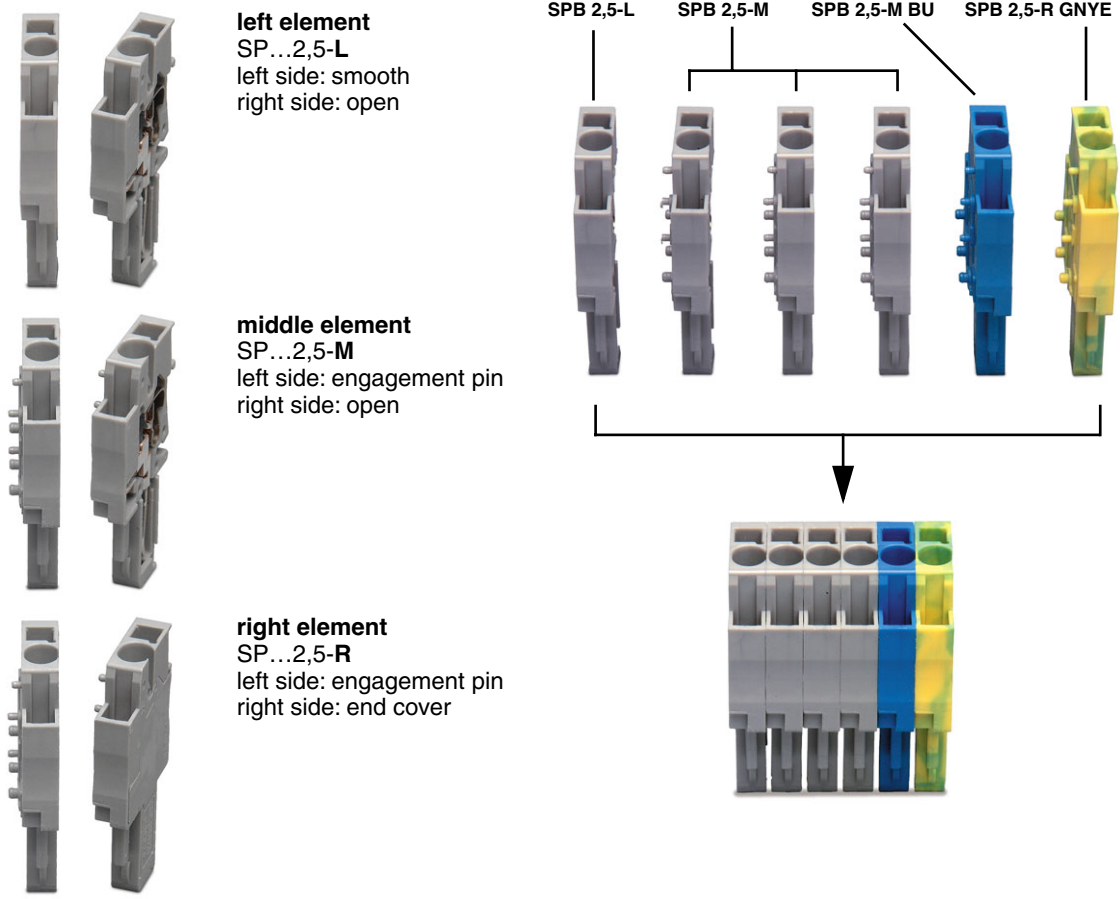
With the ST-COMBI plugs for self-assembly, we offer a solution for every task and it can be implemented by the user himself. The plug is assembled directly on site by snapping together one-position plug elements.

For plug types SP 2,5..., SPB 2,5... and SPDB 2,5..., one-position base versions are available in gray, blue and green-yellow:

Structure of a plug

For each multiple-position plug, a left element (at the beginning of the plug) and a right element (at the end of the plug) is required. How many middle elements need to be inserted depends on the number of positions of the desired plug. The individual elements are connected by pushing them together and are held by the engagement pins.

Example for the structure of a 6-position plug:



In this view, the open side of the plug is on the right. The different color versions can be combined with each other in any order for the various plug types.

Plugs for Self-Assembly

SP 2,5/1...




(IEC) [mm ²]	rigid solid	flexible stranded	AWG	I [A]	U [V]
Connection data	0.28-4	0.08-2.5	28-12	24	500



Technical data

ST-COMBI plug , single, not bridgeable, 5.2 mm wide, left element	gray blue green-yellow
ST-COMBI plug , single, not bridgeable, 5.2 mm wide, middle element	gray blue green-yellow
ST-COMBI plug , single, not bridgeable, 5.2 mm wide, right element	gray blue green-yellow

(1) Strain relief ,	black black	2-pos. 4-pos.
(2) Snap-lock fitting , for all plugs	orange orange	1-pos. 2-pos.
(3) Snap-lock fitting and strain relief , for all plugs	orange	2-pos.
(4) Shielding , for mounting on PZ/... and PRZ, for shielded conductors with		3-6 mm Ø 5-10 mm Ø
(5) Zack marker sheet , flat, for labeling the outer marker grooves	white	

Technical data in accordance with IEC / DIN VDE

Maximum load current / cross section	[A] / [mm ²]
Rated surge voltage / contamination class	[kV] / -
Surge voltage category / insulation material group	- / -

Connection capacity

Stranded with ferrule with plastic sleeve	[mm ²]
Stranded with ferrule without plastic sleeve	[mm ²]
Stranded with TWIN ferrule with plastic sleeve	[mm ²]
Stripping length	[mm]

Internal cylindrical gauge (IEC 60 947-1)

Insulation material	
Inflammability class acc. to UL 94	

Approval data (UL and CSA/CUL)

Nominal voltage / current / conductor sizes	UL: [V] / [A] / AWG
	CSA/CUL: [V] / [A] / AWG

Type	Order No.	Pcs. Pkt.
SP 2,5/1-L	30 43 01 9	50
SP 2,5/1-L BU	30 43 02 2	50
SP 2,5/1-L GNYE	30 43 03 5	50
SP 2,5/1-M	30 43 04 3	50
SP 2,5/1-M BU	30 43 05 1	50
SP 2,5/1-M GNYE	30 43 06 4	50
SP 2,5/1-R	30 43 07 7	50
SP 2,5/1-R BU	30 43 08 0	50
SP 2,5/1-R GNYE	30 43 09 3	50
PZ/2	30 40 62 7	50
PZ/4	30 40 64 3	50
PR	30 40 55 9	50
PR/2	30 40 63 0	50
PRZ	30 40 61 4	50
PSH 3-6	30 40 59 1	50
PSH 5-10	30 40 60 1	50
ZBF 5:UNPRINTED	08 08 64 2	10

	24 / 4
	6 / 3
	III / I
	0.25 - 2.5
	0.25 - 2.5
	0.5
	10
	A 3
	PA
	V0
	600 / 20 / 26-12
	600 / 20 / 26-12

Plugs for Self-Assembly

SPB 2,5/1...



(IEC) [mm ²]	rigid solid	flexible stranded	AWG	I [A]	U [V]
Connection data	0.08-4	0.08-2.5	28-12	24	500



Technical data

ST-COMBI plug , single, bridgeable, 5.2 mm wide, left element		gray blue green-yellow
ST-COMBI plug , single, bridgeable, 5.2 mm wide, middle element		gray blue green-yellow
ST-COMBI plug , single, bridgeable, 5.2 mm wide, right element		gray blue green-yellow
(1) Plug-in bridge , for cross bridging in the bridge shaft	2-pos. 3-pos. 4-pos. 5-pos. 10-pos. 20-pos.	
(2) Strain relief ,	black black	2-pos. 4-pos.
(3) Snap-lock fitting , for all plugs	orange orange	1-pos. 2-pos.
(4) Snap-lock fitting and strain relief , for all plugs	orange	2-pos.
(5) Shielding , for mounting on PZ/... and PRZ, for shielded conductors with		3-6 mm Ø 5-10 mm Ø
(6) Zack strip , flat, for labeling the outer marker grooves	white	

Technical data in accordance with IEC / DIN VDE

Maximum load current / cross section	[A] / [mm ²]
Rated surge voltage / contamination class	[kV] / -
Surge voltage category / insulation material group	- / -
Connection capacity	
Stranded with ferrule with plastic sleeve	[mm ²]
Stranded with ferrule without plastic sleeve	[mm ²]
Stranded with TWIN ferrule with plastic sleeve	[mm ²]
Stripping length	[mm]
Internal cylindrical gauge (IEC 60 947-1)	
Insulation material	
Inflammability class acc. to UL 94	
Approval data (UL and CSA/CUL)	
Nominal voltage / current / conductor sizes	UL: [V] / [A] / AWG
	CSA/CUL: [V] / [A] / AWG

Type	Order No.	Pcs. Pkt.
SPB 2,5/1-L	30 43 10 3	50
SPB 2,5/1-L BU	30 43 11 6	50
SPB 2,5/1-L GNYE	30 43 12 9	50
SPB 2,5/1-M	30 43 13 2	50
SPB 2,5/1-M BU	30 43 14 5	50
SPB 2,5/1-M GNYE	30 43 15 8	50
SPB 2,5/1-R	30 43 16 1	50
SPB 2,5/1-R BU	30 43 17 4	50
SPB 2,5/1-R GNYE	30 43 18 7	50
FBS 2-5	I _{max.} : 24 A	50
FBS 3-5	24 A	50
FBS 4-5	24 A	50
FBS 5-5	24 A	50
FBS 10-5	24 A	10
FBS 20-5	24 A	10
PZ/2	30 40 62 7	50
PZ/4	30 40 64 3	50
PR	30 40 55 9	50
PR/2	30 40 63 0	50
PRZ	30 40 61 4	50
PSH 3-6	30 40 59 1	50
PSH 5-10	30 40 60 1	50
ZBF 5:UNPRINTED	08 08 64 2	10

	24 / 4
	6 / 3
	III / I
	0.25 - 2.5
	0.25 - 2.5
	0.5
	10
	A 3
	PA
	V0
	600 / 20 / 26-12
	600 / 20 / 26-12

Plugs for Self-Assembly

SPDB 2,5/1...



(IEC) [mm ²]	rigid solid	flexible stranded	AWG	I [A]	U [V]
Connection data	0.08-4	0.08-2.5	28-12	24	500



Technical data

Plug , double, bridgeable, 5.2 mm wide, left element		gray blue green-yellow
Plug , double, bridgeable, 5.2 mm wide, middle element		gray blue green-yellow
Plug , double, bridgeable, 5.2 mm wide, right element		gray blue green-yellow
(1) Plug-in bridge , for cross bridging in the bridge shaft	2-pos. 3-pos. 4-pos. 5-pos. 10-pos. 20-pos.	
(2) Strain relief ,	black black	2-pos. 4-pos.
(3) Snap-lock fitting , for all plugs	orange orange	1-pos. 2-pos.
(4) Snap-lock fitting and strain relief , for all plugs	orange	2-pos.
(5) Shielding , for mounting on PZ/... and PRZ, for shielded conductors with		3-6 mm Ø 5-10 mm Ø
(6) Zack strip , flat, for labeling the outer marker grooves	white	

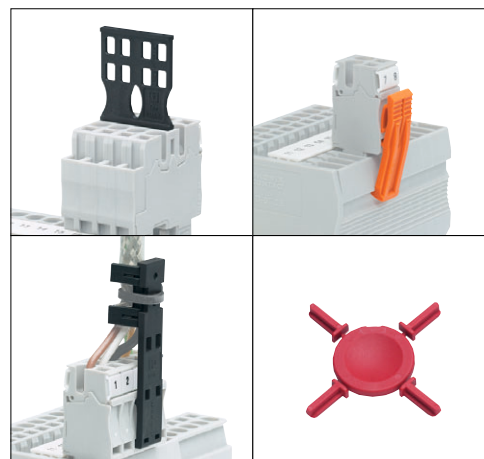
Technical data in accordance with IEC / DIN VDE

Maximum load current / cross section	[A] / [mm ²]
Rated surge voltage / contamination class	[kV] / -
Surge voltage category / insulation material group	- / -
Connection capacity	
Stranded with ferrule with plastic sleeve	[mm ²]
Stranded with ferrule without plastic sleeve	[mm ²]
Stranded with TWIN ferrule with plastic sleeve	[mm ²]
Stripping length	[mm]
Internal cylindrical gauge (IEC 60 947-1)	
Insulation material	
Inflammability class acc. to UL 94	
Approval data (UL and CSA/CUL)	
Nominal voltage / current / conductor sizes	UL: [V] / [A] / AWG
	CSA/CUL: [V] / [A] / AWG

Type	Order No.	Pcs. Pkt.
SPDB 2,5/1-L	30 43 19 0	50
SPDB 2,5/1-L BU	30 43 20 0	50
SPDB 2,5/1-L GNYE	30 43 21 3	50
SPDB 2,5/1-M	30 43 22 6	50
SPDB 2,5/1-M BU	30 43 23 9	50
SPDB 2,5/1-M GNYE	30 43 24 2	50
SPDB 2,5/1-R	30 43 25 5	50
SPDB 2,5/1-R BU	30 43 26 8	50
SPDB 2,5/1-R GNYE	30 43 27 1	50
FBS 2-5	I _{max.} : 24 A	50
FBS 3-5	24 A	50
FBS 4-5	24 A	50
FBS 5-5	24 A	50
FBS 10-5	24 A	10
FBS 20-5	24 A	10
PDZ/2	30 40 56 2	50
PDZ/4	30 40 57 5	50
PR	30 40 55 9	50
PR/2	30 40 63 0	50
PRZ	30 40 61 4	50
PSH 3-6	30 40 59 1	50
PSH 5-10	30 40 60 1	50
ZBF 5:UNPRINTED	08 08 64 2	10

	24 / 4
	6 / 3
	III / I
	0.25 - 2.5
	0.25 - 2.5
	0.5
	10
	A 3
	PA
	V0
	600 / 20 / 26-12
	600 / 20 / 26-12

ST-COMBI Accessories



Technical data

Technical data			Type	Order No.	Pcs. Pkt.
Strain relief, for SP ... and SPB ... plugs	black	2-pos.	PZ/2	30 40 62 7	50
	black	4-pos.	PZ/4	30 40 64 3	50
Strain relief, for SPDB ... plugs and receptacle SC...	black	2-pos.	PDZ/2	30 40 56 2	50
	black	4-pos.	PDZ/4	30 40 57 5	50
Snap-lock fitting, for all plugs	orange	1-pos.	PR	30 40 55 9	50
	orange	2-pos.	PR/2	30 40 63 0	50
Snap-lock fitting and strain relief for all plugs	orange	2-pos.	PRZ	30 40 61 4	50
Shielding, for mounting on PZ/... and PRZ, for shielded conductors with		3-6 mm-Ø	PSH 3-6	30 40 59 1	50
		5-10 mm-Ø	PSH 5-10	30 40 60 1	50
Coding star, with 4 coding branches, can be inserted in all base terminal blocks			PC	30 40 58 8	50

Recommendation for the use of optional accessories

Number of positions	Strain relief	Snap-lock fitting
1	–	1 x PR
2 - 4	1 x P.../2	1 x PR/2 or 2 x PR
5 - 10	1 x P.../4 or 2 x P.../2	2 x PR/2 or 4 x PR
11 - 15	2 x P.../4 or 4 x P.../2	3 x PR/2 or 6 x PR

单击下面可查看定价，库存，交付和生命周期等信息

[>>Phoenix Contact\(菲尼克斯\)](#)