

## Flush-type connector - SACC-DSIV-FS-5CON-L180SCOTHRSH - 1434879

Please be informed that the data shown in this PDF Document is generated from our Online Catalog. Please find the complete data in the user's documentation. Our General Terms of Use for Downloads are valid (<http://download.phoenixcontact.com>)



Sensor/actuator flush-type connector, socket, 4-pos., A-coded, M12 SPEEDCON, shielded, rear/screw mounting with M12 thread, with straight THR solder connection



### Key commercial data

Packing unit	1 PCE
Minimum order quantity	60 PCE
Weight per Piece (excluding packing)	11.34 GRM
Custom tariff number	85366990
Country of origin	Germany

### Technical data

#### Ambient conditions

Ambient temperature (operation)	-25 °C ... 85 °C (Plug / socket)
Degree of protection	IP67

#### General

Rated current at 40°C	4 A
Rated voltage	60 V
Number of positions	5
Contact resistance	≤ 3 mΩ
Insulation resistance	≥ 100 MΩ
Coding	A - standard
Status display	No
Surge voltage category	II
Pollution degree	3
Connection method	THR solder connection
Mounting type	Rear mounting M12 x 1 With flat nut

## Flush-type connector - SACC-DSIV-FS-5CON-L180SCOTHRSH - 1434879

### Technical data

#### Material

Inflammability class according to UL 94	V0
Contact material	CuZn
Contact surface material	Au
Contact carrier material	PPA
Material, knurls	Zinc die-cast, nickel-plated
Sealing material	FKM / EPDM

### Classifications

#### eCl@ss

eCl@ss 4.0	27250313
eCl@ss 4.1	27250313
eCl@ss 5.0	27143423
eCl@ss 5.1	27143423
eCl@ss 6.0	27143423
eCl@ss 7.0	27449001
eCl@ss 8.0	27449001

#### ETIM

ETIM 3.0	EC002061
ETIM 4.0	EC002061
ETIM 5.0	EC002061

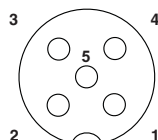
#### UNSPSC

UNSPSC 6.01	31251501
UNSPSC 7.0901	31251501
UNSPSC 11	31251501
UNSPSC 12.01	31251501
UNSPSC 13.2	31251501

### Drawings

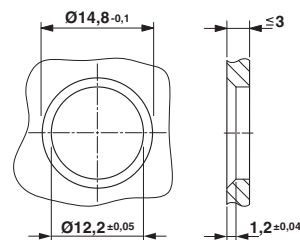
# Flush-type connector - SACC-DSIV-FS-5CON-L180SCOTHRSH - 1434879

Schematic diagram



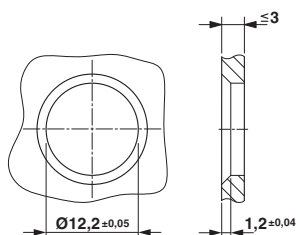
Pin assignment M12 socket, 5-pos., A-coded, socket side view

Dimensioned drawing



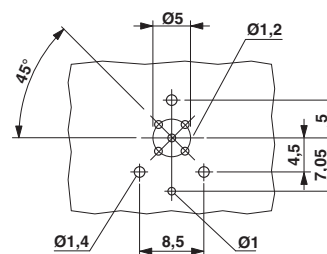
Housing cut-out for two-part M12 flush-type connectors with THR and wave soldering connection, version 1

Dimensioned drawing

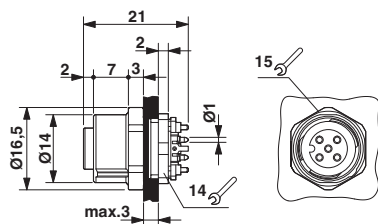


Housing cut-out for two-part M12 flush-type connectors with THR and wave soldering connection, version 2

Drilling diagram

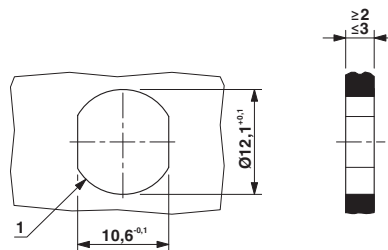


Dimensioned drawing



M12 flush-type connector

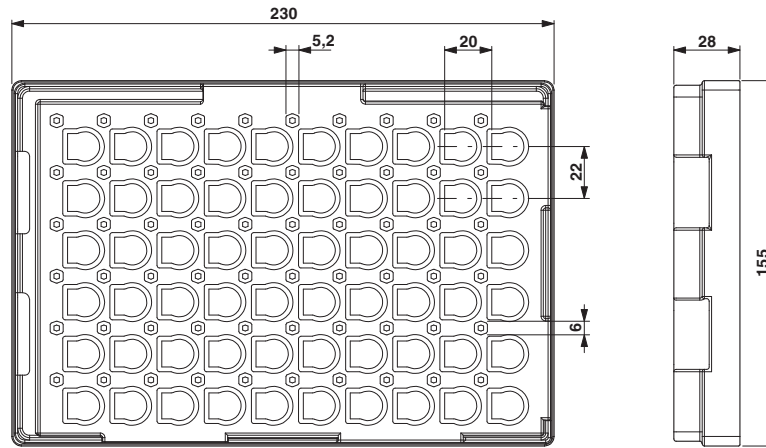
Dimensioned drawing



Housing cutout for M12 fastening thread, mounting panel with feed-through hole (alternative with surface as protection against rotation)

## Flush-type connector - SACC-DSIV-FS-5CON-L180SCOTHRSH - 1434879

Dimensioned drawing



THR tray packaging

单击下面可查看定价，库存，交付和生命周期等信息

[>>Phoenix Contact\(菲尼克斯\)](#)