

Sensor/Actuator cable - SAC-3P- 3,0-PVC/C-1L-Z - 1439515

Please be informed that the data shown in this PDF Document is generated from our Online Catalog. Please find the complete data in the user's documentation. Our General Terms of Use for Downloads are valid (<http://phoenixcontact.com/download>)



Sensor/Actuator cable, 3-position, PVC, Black RAL 9005, free cable end, on Valve connector C (8 mm), with 1 LED, connected with Z diode, connected with Z diode, Cable length: 3 m

Product Features

- ✓ Easy and safe: 100% electrically tested plug-in components
- ✓ Robust valve connector with Zener diode as protective circuit
- ✓ Convenient: increased machine availability thanks to quick and easy diagnostics



Key commercial data

| | |
|----------------------|----------|
| Packing unit | 1 pc |
| Custom tariff number | 85444290 |
| Country of origin | Poland |

Technical data

Dimensions

| | |
|-----------------|-----|
| Length of cable | 3 m |
|-----------------|-----|

Ambient conditions

| | |
|---------------------------------|-------------------------------|
| Ambient temperature (operation) | -20 °C ... 85 °C (valve plug) |
| Degree of protection | IP65 |
| | IP67 |

General

| | |
|-----------------------|-------------------------------|
| Rated current at 40°C | 4 A |
| Rated voltage | 24 V |
| Number of positions | 3 |
| Contact resistance | ≤ 5 mΩ |
| Insulation resistance | ≥ 100 MΩ |
| Standards/regulations | Valve connector EN 175301-803 |

Sensor/Actuator cable - SAC-3P- 3,0-PVC/C-1L-Z - 1439515

Technical data

General

| | |
|------------------------------|---------|
| Status display | 1 LED |
| Protective circuit/component | Z diode |
| Surge voltage category | III |
| Pollution degree | 3 |

Material

| | |
|---|-------------------|
| Inflammability class according to UL 94 | V0 |
| Valve plug contact material | CuSn |
| Valve plug contact surface material | Sn |
| Valve plug contact insert material | PA 66 |
| Material housing valve plug | TPU |
| Sealing material | TPU (Seal molded) |

Cable

| | |
|--|--|
| Cable type | PVC black |
| Cable type (abbreviation) | PVC |
| Cable abbreviation | LiYY |
| UL AWM style | 2464 |
| Conductor cross section | 3x 0.5 mm ² |
| AWG signal line | 20 |
| Conductor structure signal line | 16x 0.20 mm |
| Core diameter including insulation | 1.5 mm ±0.05 mm |
| Wire colors | black 1, black 2, green/yellow |
| Overall twist | 3 wires, twisted |
| External sheath, color | Black RAL 9005 |
| External cable diameter D | 4.8 mm ±0.2 mm |
| Minimum bending radius, fixed installation | 5 x D |
| Outer sheath, material | PVC |
| Material conductor insulation | PVC |
| Conductor material | Bare Cu litz wires |
| Insulation resistance | ≥ 20 MΩ*km |
| Conductor resistance | 39 Ω/km (at 20 °C) |
| Nominal voltage, cable | 300 V |
| Test voltage, cable | 1200 V |
| Flame resistance | DIN VDE 0482 |
| | DIN EN 50265-2-1 |
| Resistance to oil | Almost oil-resistant |
| Ambient temperature (operation) | -40 °C ... 80 °C (cable, fixed installation) |

Sensor/Actuator cable - SAC-3P- 3,0-PVC/C-1L-Z - 1439515

Technical data

Cable

| | |
|--|--|
| | -5 °C ... 80 °C (cable, flexible installation) |
|--|--|

Classifications

eCl@ss

| | |
|------------|----------|
| eCl@ss 4.0 | 27060306 |
| eCl@ss 4.1 | 27060306 |
| eCl@ss 5.0 | 27061801 |
| eCl@ss 5.1 | 27061801 |
| eCl@ss 6.0 | 27061801 |
| eCl@ss 7.0 | 27061801 |

ETIM

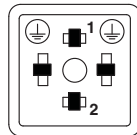
| | |
|----------|----------|
| ETIM 3.0 | EC001855 |
| ETIM 4.0 | EC001855 |
| ETIM 5.0 | EC001855 |

UNSPSC

| | |
|---------------|----------|
| UNSPSC 6.01 | 31251501 |
| UNSPSC 7.0901 | 31251501 |
| UNSPSC 11 | 31251501 |
| UNSPSC 12.01 | 31251501 |
| UNSPSC 13.2 | 31251501 |

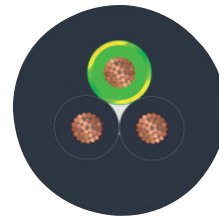
Drawings

Schematic diagram



Valve connector connector pin assignment, type C

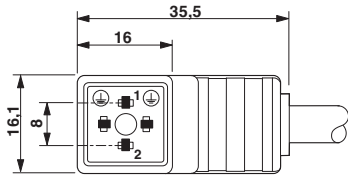
Cable cross section



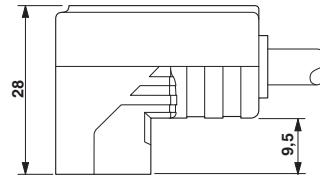
PVC black [PVC]

Sensor/Actuator cable - SAC-3P- 3,0-PVC/C-1L-Z - 1439515

Dimensioned drawing



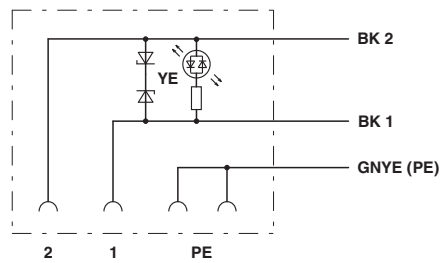
Dimensioned drawing



Valve connector, type C, side view

Valve connector, type C

Circuit diagram



Contact assignment of the valve plug

单击下面可查看定价，库存，交付和生命周期等信息

[>>Phoenix Contact\(菲尼克斯\)](#)