

# ELR-CONF-WIN-2.0

## Configuration Software



Data Sheet

01/2005

## Features

ELR-CONF-WIN 2.0 software is used for the "parameterization" and "visualization" of electronic modules with motor management.

The software can be used to enter all parameters via the keyboard or graphically and send them to the load

relay with a click of the mouse. The software is also used to display and record operating data so that it can then be processed further in databases, for example.

The software runs under Windows 9x, Windows ME, Windows NT4.0, Windows 2000, and Windows XP.

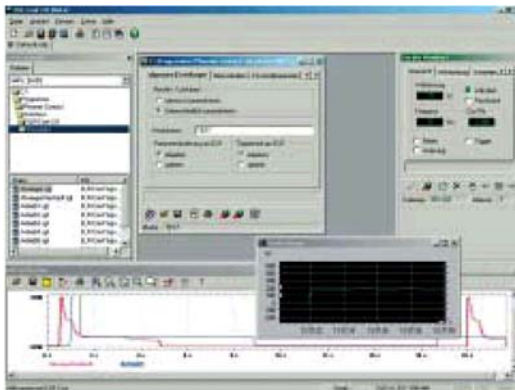


Figure 1 Configuration, monitoring, and visualization

## Ordering Data

Description	Order Designation	Order No.
Configuration software for programming electronic load relays with motor management Languages: English, German	ELR-CONF-WIN-2.0	29 63 58 5
Software adapter cable	ELR-KAD-RS232	29 63 65 3



Make sure you always use the latest documentation.  
It can be downloaded from [www.download.phoenixcontact.com](http://www.download.phoenixcontact.com).

PHOENIX CONTACT GmbH & Co. KG  
Flachsmarktstr. 8  
32825 Blomberg  
Germany



+49 - 52 35 - 30 0



+49 - 52 35 - 34 12 00



[www.phoenixcontact.com](http://www.phoenixcontact.com)



Worldwide Locations:

[www.phoenixcontact.com/salesnetwork](http://www.phoenixcontact.com/salesnetwork)

单击下面可查看定价，库存，交付和生命周期等信息

[>>Phoenix Contact\(菲尼克斯\)](#)