

Flush-type connector - SACC-DSIV-M12FSB-5CON-L180 SH - 1437180

Please be informed that the data shown in this PDF Document is generated from our Online Catalog. Please find the complete data in the user's documentation. Our General Terms of Use for Downloads are valid (<http://download.phoenixcontact.com>)



Sensor/actuator flush-type connector, socket, 5-pos., M12, shielded, B-coded, rear/screw mounting with M12 thread, with polarity protection, with straight solder connection



Key commercial data

| | |
|--------------------------------------|----------|
| Packing unit | 1 1 |
| Minimum order quantity | 60 1 |
| Weight per Piece (excluding packing) | 22.5 GRM |
| Custom tariff number | 85366990 |
| Country of origin | Germany |

Technical data

Ambient conditions

| | |
|---------------------------------|----------------------------------|
| Ambient temperature (operation) | -25 °C ... 85 °C (Plug / socket) |
| Degree of protection | IP67 |

General

| | |
|------------------------|-------------------------------|
| Rated current at 40°C | 4 A |
| Rated voltage | 60 V |
| Number of positions | 5 |
| Contact resistance | ≤ 3 mΩ |
| Insulation resistance | ≥ 100 MΩ |
| Coding | B - inverse |
| Standards/regulations | M12 connector IEC 61076-2-101 |
| Status display | No |
| Surge voltage category | II |
| Pollution degree | 3 |

Flush-type connector - SACC-DSIV-M12FSB-5CON-L180 SH - 1437180

Technical data

General

| | |
|-------------------|--|
| Connection method | Solder pins |
| Mounting type | Rear mounting M12 x 1 With locking nut |

Material

| | |
|---|---------------------|
| Inflammability class according to UL 94 | HB |
| Contact material | CuZn |
| Contact surface material | Ni/Au |
| Contact carrier material | PA 66 |
| Material, knurls | Nickel-plated brass |
| Sealing material | NBR |

Classifications

eCl@ss

| | |
|------------|----------|
| eCl@ss 4.0 | 27250313 |
| eCl@ss 4.1 | 27250313 |
| eCl@ss 5.0 | 27143423 |
| eCl@ss 5.1 | 27143423 |
| eCl@ss 6.0 | 27143423 |
| eCl@ss 7.0 | 27449001 |
| eCl@ss 8.0 | 27449001 |

ETIM

| | |
|----------|----------|
| ETIM 3.0 | EC002061 |
| ETIM 4.0 | EC002062 |
| ETIM 5.0 | EC002062 |

UNSPSC

| | |
|---------------|----------|
| UNSPSC 6.01 | 31251501 |
| UNSPSC 7.0901 | 31251501 |
| UNSPSC 11 | 31251501 |
| UNSPSC 12.01 | 31251501 |
| UNSPSC 13.2 | 31251501 |

Approvals

Approvals

Flush-type connector - SACC-DSIV-M12FSB-5CON-L180 SH - 1437180

Approvals

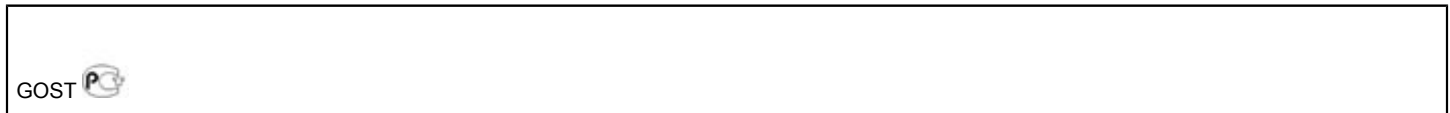
Approvals

GOST / GOST

Ex Approvals

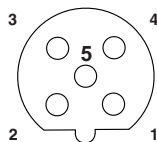
Approvals submitted

Approval details



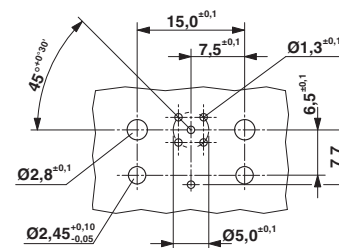
Drawings

Schematic diagram



Pin assignment M12 socket, 5-pos., B-coded, female side

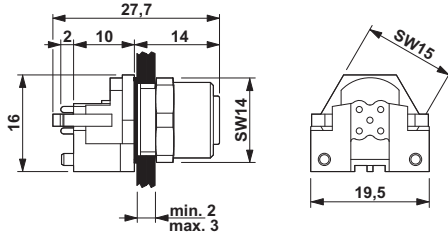
Drilling diagram



M12 flush-type connector

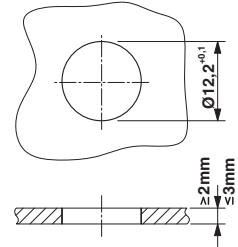
Flush-type connector - SACC-DSIV-M12FSB-5CON-L180 SH - 1437180

Dimensioned drawing



M12 flush-type connector

Dimensioned drawing



Panel cutout

单击下面可查看定价，库存，交付和生命周期等信息

[>>Phoenix Contact\(菲尼克斯\)](#)