

Molded transformer terminal block - VTRK 4-SI/C OG - 3004508

Please be informed that the data shown in this PDF Document is generated from our Online Catalog. Please find the complete data in the user's documentation. Our General Terms of Use for Downloads are valid
(<http://download.phoenixcontact.com>)



Molded transformer terminal block, Connection method: Screw connection, Length: 23.4 mm, Width: 12.4 mm, Height: 29.7 mm, Color: orange



Key commercial data

Packing unit	1 1
GTIN	4 017918 090814
Weight per Piece (excluding packing)	10.23 GRM
Custom tariff number	85369010
Country of origin	Poland

Technical data

General

Number of connections	4
Color	orange
Insulating material	PA
Inflammability class according to UL 94	V0
Rated surge voltage	0.8 kV
Rated insulation voltage	32 V
Pollution degree	3
Surge voltage category	III
Nominal current I_N	10 A (is determined by the fuse used)
Nominal voltage U_N	(voltage data only possible in conjunction with transformer)
Number of positions	2

Dimensions

Width	12.4 mm
-------	---------

Molded transformer terminal block - VTRK 4-SI/C OG - 3004508

Technical data

Dimensions

Length	23.4 mm
Height	29.7 mm

Connection data

Conductor cross section solid min.	0.2 mm ²
Conductor cross section solid max.	6 mm ²
Conductor cross section stranded min.	0.2 mm ²
Conductor cross section stranded max.	4 mm ²
Conductor cross section AWG/kcmil min.	24
Conductor cross section AWG/kcmil max.	10
Conductor cross section stranded, with ferrule without plastic sleeve min.	0.25 mm ²
Conductor cross section stranded, with ferrule without plastic sleeve max.	4 mm ²
Conductor cross section stranded, with ferrule with plastic sleeve min.	0.25 mm ²
Conductor cross section stranded, with ferrule with plastic sleeve max.	2.5 mm ²
2 conductors with same cross section, solid min.	0.2 mm ²
2 conductors with same cross section, solid max.	1.5 mm ²
2 conductors with same cross section, stranded min.	0.2 mm ²
2 conductors with same cross section, stranded max.	1.5 mm ²
2 conductors with same cross section, stranded, ferrules without plastic sleeve, min.	0.25 mm ²
2 conductors with same cross section, stranded, ferrules without plastic sleeve, max.	1.5 mm ²
2 conductors with same cross section, stranded, TWIN ferrules with plastic sleeve, min.	0.5 mm ²
2 conductors with same cross section, stranded, TWIN ferrules with plastic sleeve, max.	2.5 mm ²
Connection method	Screw connection
Stripping length	8 mm
Internal cylindrical gage	A4
Screw thread	M3
Tightening torque, min	0.6 Nm
Tightening torque max	0.8 Nm

Classifications

eCl@ss

eCl@ss 4.0	27141110
eCl@ss 4.1	27141110
eCl@ss 5.0	27141110

Molded transformer terminal block - VTRK 4-SI/C OG - 3004508

Classifications

eCl@ss

eCl@ss 5.1	27141110
eCl@ss 6.0	27141110
eCl@ss 7.0	27141110

ETIM

ETIM 2.0	EC001283
ETIM 3.0	EC001283
ETIM 4.0	EC000398
ETIM 5.0	EC000398

UNSPSC

UNSPSC 6.01	30211811
UNSPSC 7.0901	39121410
UNSPSC 11	39121410
UNSPSC 12.01	39121410
UNSPSC 13.2	39121410

Approvals

Approvals


Approvals

CSA / UL Recognized / cUL Recognized / GOST / GOST / cULus Recognized

Ex Approvals

Approvals submitted


Approval details


<div>CSA </div>		
	B	D
mm ² /AWG/kcmil	24-10	24-10
Nominal current I _N	7.5 A	7.5 A


Molded transformer terminal block - VTRK 4-SI/C OG - 3004508


Approvals


	B	D
Nominal voltage UN	125 V	125 V

UL Recognized 		
	B	C
mm²/AWG/kcmil	30-10	30-10
Nominal current IN	10 A	10 A
Nominal voltage UN	32 V	32 V

cUL Recognized 		
	B	C
mm²/AWG/kcmil	30-10	30-10
Nominal current IN	10 A	10 A
Nominal voltage UN	32 V	32 V

GOST 		
--	--	--

GOST 		
--	--	--

cULus Recognized 		
--	--	--

Accessories

Accessories

Fuse

Molded transformer terminal block - VTRK 4-SI/C OG - 3004508

Accessories

Fuse - SI FORM C 2 A - 0913689



Flat-type plug-in fuse, type C, color code: gray, nominal current: 2 A

Fuse - SI FORM C 3 A DIN 72581 - 0913773



Flat-type plug-in fuse, type C, color code: violet, nominal current: 3 A

Fuse - SI FORM C 4 A DIN 72581 - 0913731



Flat-type plug-in fuse, type C, color code: pink, nominal current: 4 A

Fuse - SI FORM C 5 A DIN 72581 - 0913692



Flat-type plug-in fuse, type C, color code: light brown, nominal current: 5 A

Fuse - SI FORM C 7,5 A DIN 72581 - 0913702



Flat-type plug-in fuse, type C, color code: brown, nominal current: 7.5 A

Molded transformer terminal block - VTRK 4-SI/C OG - 3004508

Accessories

Fuse - SI FORM C 10 A DIN 72581 - 0913715



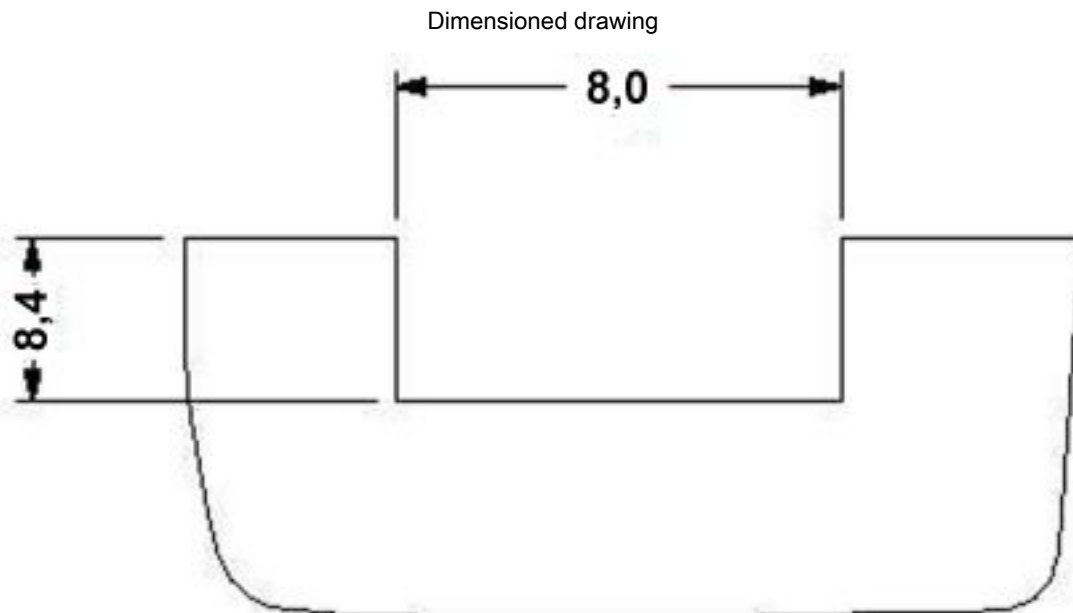
Flat-type plug-in fuse, type C, color code: red, nominal current: 10 A

Mounting material

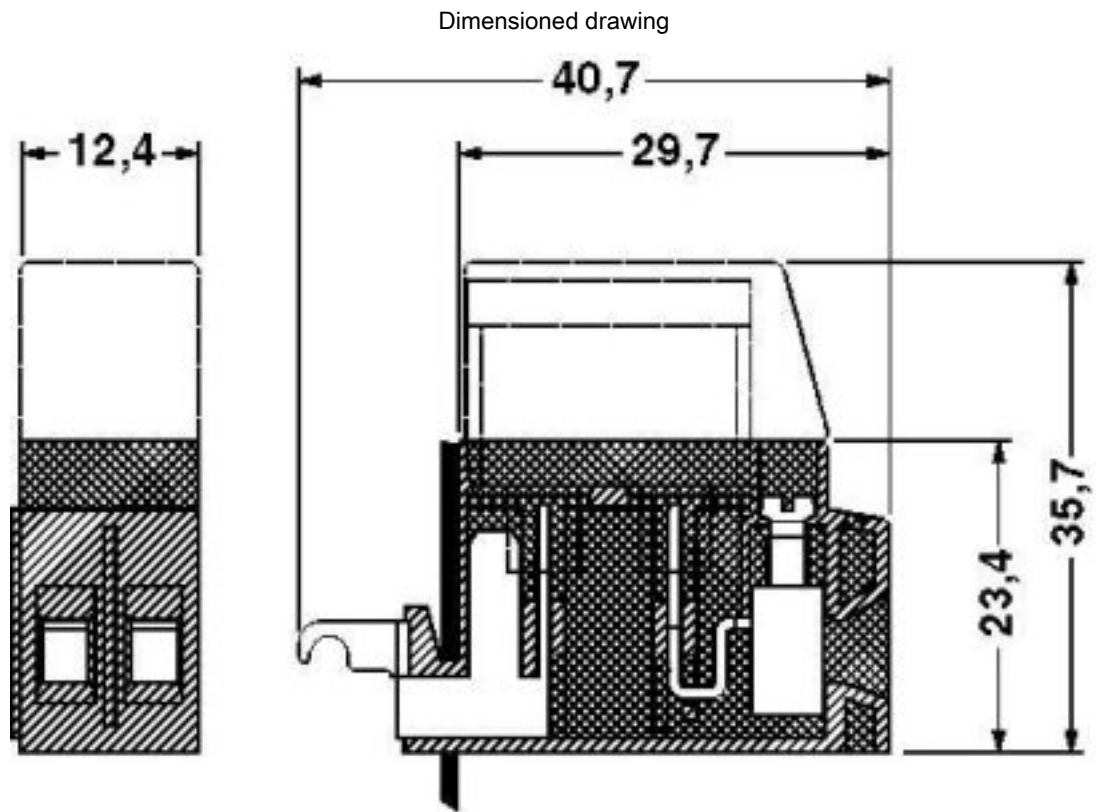
Transformer terminal block - VTRK 4-SI/C AH - 2702526

Covering hood, for covering the fuse, is snapped on later, made of transparent plastic

Drawings



Molded transformer terminal block - VTRK 4-SI/C OG - 3004508



单击下面可查看定价，库存，交付和生命周期等信息

[>>Phoenix Contact\(菲尼克斯\)](#)