


# FLKM 50/4-FLK14/PA-S300

Order No.: 2296281



<http://eshop.phoenixcontact.de/phoenix/treeViewClick.do?UID=2296281>

Front adapter, 4 x 8 channels can be connected for SIMATIC S7-300, 14-pos.

Commercial data	
GTIN (EAN)	 4 017918 190309
sales group	I600
Pack	1 pcs.
Customs tariff	85369010
Catalog page information	Page 208 (IF-2009)

### Product notes

WEEE/RoHS-compliant since:  
03/30/2007



<http://www.download.phoenixcontact.com>  
Please note that the data given here has been taken from the online catalog. For comprehensive information and data, please refer to the user documentation. The General Terms and Conditions of Use apply to Internet downloads.

## Technical data

General	
Note	<p>Analog I/O cards <b>To avoid short-circuits, all wire bridges must be disconnected! No voltage supply may be supplied to the front adapter!</b></p> <p>Digital I/O cards Thanks to the existing wire bridge upon delivery, the input and output bytes are non-isolated.</p>

Nominal voltage $U_N$	< 50 V AC
	60 V DC
Channels which can be connected	32
Connection type, plug connector	Flat-ribbon cable plug connector in acc. with IEC 60603-13
Number of plug connectors	4
No. of positions, plug connector	14
Number of positions	14
Ambient temperature (operation)	-20 °C ... 50 °C
Ambient temperature (storage/transport)	-20 °C ... 70 °C
Mounting position	Any
Standards/regulations	IEC 60664
	DIN EN 50178
	IEC 62103
Max. permissible current	1 A (per path)
	8 A (per connection, supply via separate power supply (2.8 x 0.8 mm))
Max. permissible total current	2 A (Per Byte, for supply via connector)
	8 A (during supply via a separate bridged power supply)
Pollution degree	2
Surge voltage category	II
Supported controller	SIEMENS S7-300 / ET 200 M
Supported I/O card	CPU 313C
	CPU 313C-2DP
	CPU 313C-2PtP
	CPU 314C-2DP
	CPU 314C-2PtP
	321-1BL00-0AA0
	322-1BL00-0AA0
	323-1BL00-0AA0
	331-7NF00-0AB0
	331-7PF01-0AB0
	331-7PF11-0AB0
	350-2AH01-0AE0
	357-4AH01-0AE0

## Certificates / Approvals

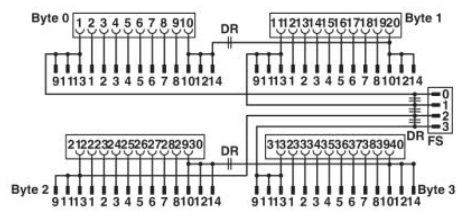


Certification

CUL, GOST, UL

## Diagrams/Drawings

Circuit diagram



Connection scheme FLKM 50/4-FLK14/PA-S300

**Address**

PHOENIX CONTACT Deutschland GmbH  
Flachmarktstr. 8  
32825 Blomberg, Germany  
Phone +49 5235 3 12000  
Fax +49 5235 3 41200  
<http://www.phoenixcontact.de>



© 2011 Phoenix Contact  
Technical modifications reserved;

单击下面可查看定价，库存，交付和生命周期等信息

[>>Phoenix Contact\(菲尼克斯\)](#)