

Mounting brackets - PSD-S ME BR-SM/2S - 2700161

Please be informed that the data shown in this PDF Document is generated from our Online Catalog. Please find the complete data in the user's documentation. Our General Terms of Use for Downloads are valid (<http://phoenixcontact.com/download>)



Angle for two-sided floor mounting, concealed cable routing, black

Product Features

- Two-sided mounting for up to 10 signal elements
- With concealed cable routing



Key commercial data

Packing unit	1 pc
Weight per Piece (excluding packing)	75.2 GRM
Custom tariff number	85318095
Country of origin	Germany

Technical data

Dimensions

Diameter	70 mm
Height	98 mm

Ambient conditions

Ambient temperature (operation)	-20 °C ... 60 °C
---------------------------------	------------------

General

Material	PA A3 x 2G5
Color	black
Weight	71 g
Mounting position	any
Mounting type	Base mounting
Assembly instructions	Seal is supplied with
Scope of delivery	4 x lens sheet screw

Mounting brackets - PSD-S ME BR-SM/2S - 2700161

Technical data

General

	3 x seal
--	----------

Classifications

eCl@ss

eCl@ss 4.0	27143203
eCl@ss 4.1	27143203
eCl@ss 5.0	27371232
eCl@ss 5.1	27371232
eCl@ss 6.0	27371232
eCl@ss 7.0	27371232
eCl@ss 8.0	27371232

ETIM

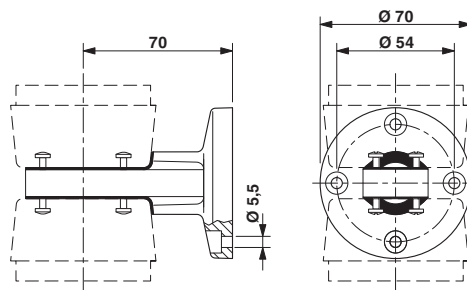
ETIM 3.0	EC001152
ETIM 4.0	EC001152
ETIM 5.0	EC001152

UNSPSC

UNSPSC 6.01	43172015
UNSPSC 7.0901	43201404
UNSPSC 11	39121311
UNSPSC 12.01	39121311
UNSPSC 13.2	39121311

Drawings

Dimensioned drawing



单击下面可查看定价，库存，交付和生命周期等信息

[>>Phoenix Contact\(菲尼克斯\)](#)