

Flange - SACC-MSQ-M12MS-25-3,2 SCO - 1419959

Please be informed that the data shown in this PDF Document is generated from our Online Catalog. Please find the complete data in the user's documentation. Our General Terms of Use for Downloads are valid (<http://download.phoenixcontact.com>)

Flange housing, 25 mm x 25 mm



Key commercial data

Packing unit	1 PCE
Weight per Piece (excluding packing)	20.0 GRM
Custom tariff number	85389099
Country of origin	Germany

Technical data

Ambient conditions

Ambient temperature (operation)	-25 °C ... 85 °C (Plug / socket)
---------------------------------	----------------------------------

General

Standards/regulations	M12 connector IEC 61076-2-101
Mounting type	Front mounting, square flange 25 mm side length Square flange

Material

Material, knurls	Zinc die-cast, nickel-plated
Sealing material	NBR

Classifications

eCl@ss

eCl@ss 4.0	27250313
eCl@ss 4.1	27250313
eCl@ss 5.0	27143423

Flange - SACC-MSQ-M12MS-25-3,2 SCO - 1419959

Classifications

eCl@ss

eCl@ss 5.1	27143423
eCl@ss 6.0	27143423
eCl@ss 7.0	27449001
eCl@ss 8.0	27449001

ETIM

ETIM 4.0	EC002608
ETIM 5.0	EC002608

UNSPSC

UNSPSC 6.01	31251501
UNSPSC 7.0901	31251501
UNSPSC 11	31251501
UNSPSC 12.01	31251501
UNSPSC 13.2	31251501

Approvals

Approvals

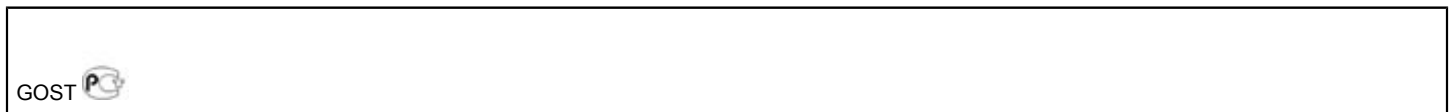
Approvals

GOST / GOST

Ex Approvals

Approvals submitted

Approval details



Flange - SACC-MSQ-M12MS-25-3,2 SCO - 1419959

Accessories

Accessories

Circular connectors (device side)

Contact carriers - SACC-MCI-M12MSD-4CON/0,5 - 1440821



Assembled contact carrier and insulating body with 0.5 m litz wires and crimp contacts

Contact carriers - SACC-MCI-M12MS-4CON - 1440931



4-pos. contact carrier, with splice ring, A-coded

Contact carriers - SACC-MCI-M12MSD-4CON - 1440944



4-pos. contact carrier, with splice ring, D-coded

Contact carriers - SACC-MCI-M12MS-5CON - 1419988



5-pos. contact carrier, with splice ring, A-coded

Contact carriers - SACC-MCI-M12MSB-5CON - 1440915



5-pos. contact carrier, with splice ring, B-coded

Flange - SACC-MSQ-M12MS-25-3,2 SCO - 1419959

Accessories

Contact carriers - SACC-MCI-M12MS-8CON - 1440928



8-pos. contact carrier, with splice ring

Contact insert

Contact carriers - SACC-MCI-M12MS-4CON/0,5 - 1440805



Assembled contact carrier and insulating body with 0.5 m litz wires and crimp contacts

Contact carriers - SACC-MCI-M12MS-5CON/0,5 - 1440818



Assembled contact carrier and insulating body with 0.5 m litz wires and crimp contacts

Contact carriers - SACC-MCI-M12MSB-5CON/0,5 - 1440759



Assembled contact carrier and insulating body with 0.5 m litz wires and crimp contacts

Contact carriers - SACC-MCI-M12MS-8CON/0,5 - 1457827

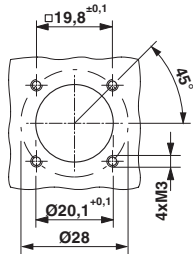


Assembled contact carrier and insulating body with 0.5 m litz wires and crimp contacts

Flange - SACC-MSQ-M12MS-25-3,2 SCO - 1419959

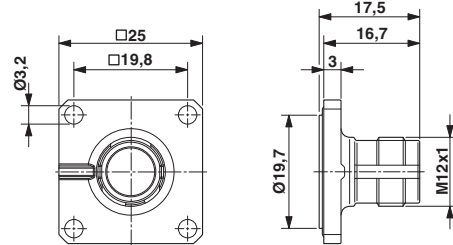
Drawings

Dimensioned drawing



Installation dimensions

Dimensioned drawing



M12 flush-type plug, square flange

单击下面可查看定价，库存，交付和生命周期等信息

[>>Phoenix Contact \(菲尼克斯\)](#)