

# PSD-S AE BM2-1 85DB

**Buzzer element, continuous/pulse tone, 24 V AC/DC,  
max. 85 dB(A)**

Data sheet  
7946\_en\_02

© PHOENIX CONTACT 2015-12-18



## 1 Description

This audible signal element is designed as a component of a modular signal tower.

According to your requirements, a signal tower can be combined as desired, from a maximum of five signal elements. Set up to a maximum of five optical signal elements or up to four optical and one audible signal element.

Only use an acoustic signal element as the top element.

A bayonet locking system establishes the mechanical and electrical connection between the elements.

Connection elements with spring-cage or screw connection can be used for electrical connection of the signal tower.

Mounting elements for base or tube mounting can be used to mount the signal tower.

### Features

- Buzzer element for 24 V AC/DC
- Continuous/pulse tone
- Maximum volume of 85 dB(A)
- Degree of protection: IP65, when mounted
- No opening for sound to escape



Make sure you always use the latest documentation.  
It can be downloaded from the product at [phoenixcontact.net/products](https://phoenixcontact.net/products).

**2 Table of contents**

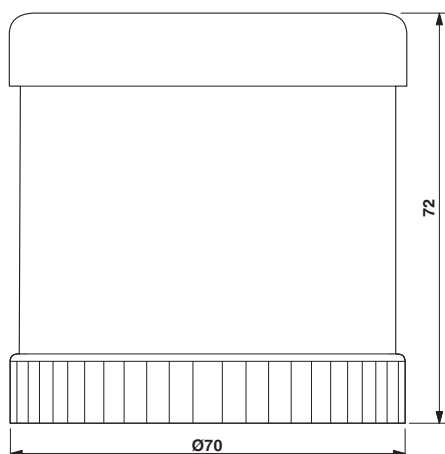
1	Description .....	1
2	Table of contents .....	2
3	Ordering data .....	3
4	Technical data .....	3
5	Setting the tone type .....	4
6	Example of a signal tower .....	4
7	Assembly notes for a signal tower .....	5
8	Assembling the individual elements .....	5
9	Example for signal tower dimensions .....	5

### 3 Ordering data

Description	Type	Order No.	Pcs./Pkt.
Buzzer element, continuous/pulse tone, 24 V AC/DC, max. 85 dB(A), black	PSD-S AE BM2-1 85DB	2700136	1

### 4 Technical data

#### Dimensions (in mm)



Diameter	70 mm
Height	72 mm

#### General data

Material	Polycarbonate PC
Color	black
Weight	73 g
Ambient temperature (operation)	-30 °C ... 50 °C
Degree of protection	IP65, when installed
Mounting position	any

#### Electrical data

Input voltage	12 V AC/DC ... 30 V AC/DC
Inrush current	max. 200 mA
Current consumption	25 mA
Type of acoustic signal	Continuous/pulse tone
Signal frequency	approx. 1 Hz
Tone frequency	approx. 1.75 kHz
Volume	85 dB(A)
Service life, electrical	min. 5,000 h
Operating time	100 %

#### Approvals/conformities

Conformance with EMC Directive 2004/108/EC (valid until 19.04.2016) / 2014/30/EU (valid from 20.04.2016)

For the latest approvals, please visit [phoenixcontact.net/products](http://phoenixcontact.net/products).

## 5 Setting the tone type

Disconnect the power to the signal tower before changing the tone!

A switch is positioned on the printed-circuit board inside the housing. Adjust the type of tone via this switch.

Depending on the production date, either a wire frame switch or a DIP switch is available.

Switch position			Tone type
Wire frame switch	DIP switch		
Open	Left	1	Pulse tone
Closed	Right	ON	Continuous tone

## 6 Example of a signal tower

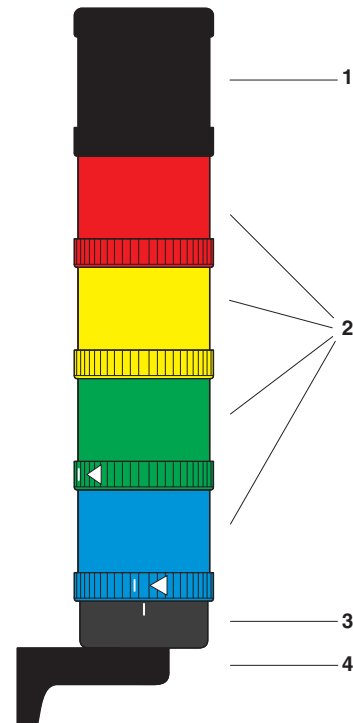


Figure 1 Example of a signal tower

Key:

- 1 Audible signal element
- 2 Optical signal element
- 3 Connection element
- 4 Assembly element

## 7 Assembly notes for a signal tower

- Only use a maximum of five elements within a signal tower.
- Use only one audible element in a signal tower and position this element on top.
- When closing the bayonet locking system, observe the markings (see "Assembling the individual elements").

## 8 Assembling the individual elements

Audible and optical signal elements are assembled in the same way. The illustration shows the assembly of two optical elements.

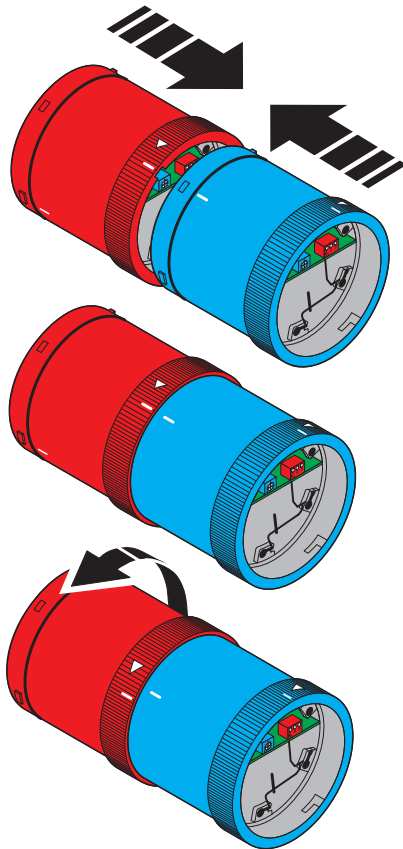


Figure 2 Assembling the individual elements

- Select the elements for your application.
- Connect the elements to be assembled so that the markings are aligned.
- Turn the upper element in the direction of the arrow.

## 9 Example for signal tower dimensions

The following figure shows the dimensions of a typical signal tower.

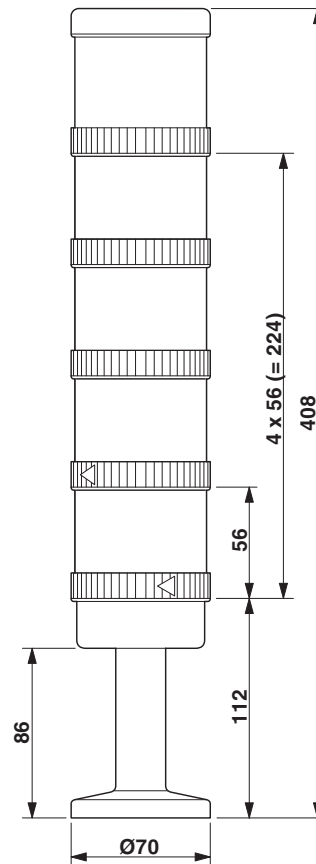


Figure 3 Dimensions of a signal tower (example)

单击下面可查看定价，库存，交付和生命周期等信息

[>>Phoenix Contact\(菲尼克斯\)](#)