

Connector - C-SCFI 2,5/6,3X0,8 - 3240055

Please be informed that the data shown in this PDF Document is generated from our Online Catalog. Please find the complete data in the user's documentation. Our General Terms of Use for Downloads are valid (<http://download.phoenixcontact.com>)



Slip-on sleeve, blue, 1.5 - 2.5 mm², 6.3 x 0.8

Product Features

- Hard-soldered crimping zone for maximum pull-out forces
- Electrolytic tin plating
- Halogen-free
- 'EASY ENTRY' for easy and reliable conductor entry



Key commercial data

Packing unit	1 1
Minimum order quantity	100 1
Weight per Piece (excluding packing)	1.2 GRM
Custom tariff number	85366990
Country of origin	China

Technical data

Dimensions

Length (b)	22 mm
Width (a)	6.3 mm
Length of insulation sleeve (c)	11 mm
Inner dimension of the insulating collar (d)	5 mm
Material thickness (g)	0.4 mm

Ambient conditions

Ambient temperature (operation)	-20 °C ... 105 °C
---------------------------------	-------------------

General

Color	blue
-------	------

Connector - C-SCFI 2,5/6,3X0,8 - 3240055

Technical data

General

Stripping length	8 mm
Components	Halogen-free
Material	Brass

Classifications

eCl@ss

eCl@ss 4.0	27060701
eCl@ss 4.1	27060701
eCl@ss 5.0	27400201
eCl@ss 5.1	27400201
eCl@ss 6.0	27400201
eCl@ss 7.0	27400201
eCl@ss 8.0	27400201

ETIM

ETIM 2.0	EC000005
ETIM 3.0	EC000005
ETIM 4.0	EC001052
ETIM 5.0	EC001052

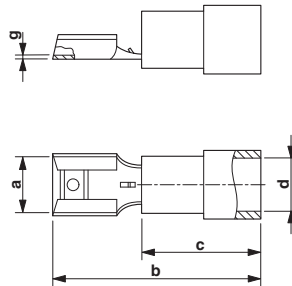
UNSPSC

UNSPSC 6.01	30211923
UNSPSC 7.0901	27121703
UNSPSC 11	27121703
UNSPSC 12.01	27121703
UNSPSC 13.2	27121703

Drawings

Connector - C-SCFI 2,5/6,3X0,8 - 3240055

Dimensioned drawing



单击下面可查看定价，库存，交付和生命周期等信息

[>>Phoenix Contact\(菲尼克斯\)](#)