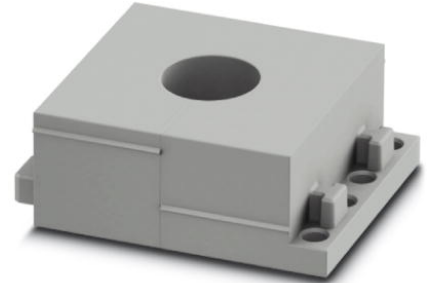



CES-LTPG-GY-17

Order No.: 0801689

<http://catalog.phoenixcontact.net/phoenix/treeViewClick.do?UID=0801689>

Large, slotted cable sleeves suitable for cables with a diameter of 16 ... 17 mm, material: SEBS

Commercial data

EAN	 4 046356 674935
sales group	B241
Pack	10 Pcs.
Customs tariff	85472000
Gross weight in pieces	0.03057 KG
Net weight per piece	0.02222 KG

Product notes

WEEE/RoHS-compliant since:
06/27/2011



<http://www.download.phoenixcontact.com>
Please note that the data given here has been taken from the online catalog. For comprehensive information and data, please refer to the user documentation. The General Terms and Conditions of Use apply to Internet downloads.

Product description

Slotted sleeves for accommodating pre-assembled cables and lines with a diameter of 16 ... 17 mm, can be used in CES sealing frames. When fitted, the sleeves also ensure strain relief according to DIN EN 50262.

Technical data

General data

Product description	Slotted sleeves for accommodating pre-assembled cables and lines with a diameter of 16 ... 17 mm, can be used in CES sealing frames. When fitted, the sleeves also ensure strain relief according to DIN EN 50262.
External cable diameter	16 mm ... 17 mm
Material	SEBS
Inflammability class according to UL 94	V0
Color	gray
Degree of protection	IP54
Ambient temperature (operation)	-40 °C ... 80 °C (static)

Certificates / Approvals

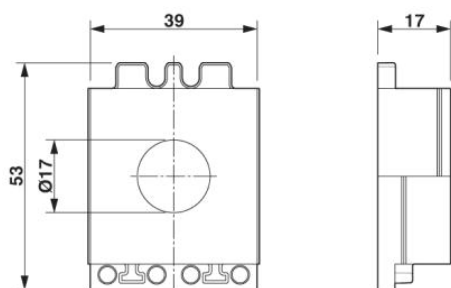
Certification

Certifications applied for:

Certification Ex:

Drawings

Dimensioned drawing



Dimensional drawing

Address

PHOENIX CONTACT Deutschland GmbH
Flachmarktstr. 8
32825 Blomberg, Germany
Phone +49 5235 3 12000
Fax +49 5235 3 41200
<http://www.phoenixcontact.de>



© 2012 Phoenix Contact
Technical modifications reserved;

单击下面可查看定价，库存，交付和生命周期等信息

[>>Phoenix Contact\(菲尼克斯\)](#)