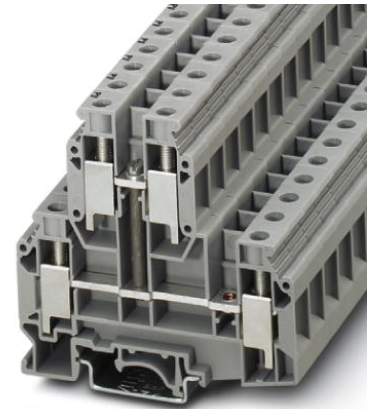


UKKB 10-PV


Order No.: 3003567



<http://eshop.phoenixcontact.de/phoenix/treeViewClick.do?UID=3003567>

Feed-through modular terminal block, Cross section: 0.5 mm² - 16 mm², AWG: 20 - 6, Connection type: Screw connection, Width: 10.2 mm, Color: gray, Mounting type: NS 35/7.5, NS 35/15, NS 32

Commercial data

| | |
|--------------------------|---|
| GTIN (EAN) |  |
| sales group | A210 |
| Pack | 50 pcs. |
| Customs tariff | 85369010 |
| Catalog page information | Page 358 (CL-2009) |

Product notes

WEEE/RoHS-compliant since:
01/01/2003



<http://www.download.phoenixcontact.com>
Please note that the data given here has been taken from the online catalog. For comprehensive information and data, please refer to the user documentation. The General Terms and Conditions of Use apply to Internet downloads.

Technical data

General

| | |
|-----------------------|------|
| Number of levels | 2 |
| Number of connections | 4 |
| Color | gray |
| Insulating material | PA |

| | |
|------------------------------------|----|
| Inflammability class acc. to UL 94 | V0 |
|------------------------------------|----|

Dimensions

| | |
|------------------|---------|
| Width | 10.2 mm |
| Length | 77.5 mm |
| Height NS 35/7.5 | 73 mm |
| Height NS 35/15 | 80.5 mm |
| Height NS 32 | 78 mm |

Technical data

| | |
|----------------------------------|---------------|
| Rated surge voltage | 6 kV |
| Pollution degree | 3 |
| Surge voltage category | III |
| Insulating material group | I |
| Connection in acc. with standard | IEC 60947-7-1 |
| Nominal current I_N | 57 A |
| Nominal voltage U_N | 500 V |

Connection data

| | |
|--|---------------------|
| Conductor cross section solid min. | 0.5 mm ² |
| Conductor cross section solid max. | 16 mm ² |
| Conductor cross section stranded min. | 0.5 mm ² |
| Conductor cross section stranded max. | 10 mm ² |
| Conductor cross section AWG/kcmil min. | 20 |
| Conductor cross section AWG/kcmil max | 6 |
| Conductor cross section stranded, with ferrule without plastic sleeve min. | 0.5 mm ² |
| Conductor cross section stranded, with ferrule without plastic sleeve max. | 10 mm ² |
| Conductor cross section stranded, with ferrule with plastic sleeve min. | 0.5 mm ² |
| Conductor cross section stranded, with ferrule with plastic sleeve max. | 6 mm ² |
| 2 conductors with same cross section, solid min. | 0.5 mm ² |
| 2 conductors with same cross section, solid max. | 6 mm ² |
| 2 conductors with same cross section, stranded min. | 0.5 mm ² |
| 2 conductors with same cross section, stranded max. | 4 mm ² |

| | |
|---|---------------------|
| 2 conductors with same cross section, stranded, ferrules without plastic sleeve, min. | 0.5 mm ² |
| 2 conductors with same cross section, stranded, ferrules without plastic sleeve, max. | 6 mm ² |
| 2 conductors with same cross section, stranded, TWIN ferrules with plastic sleeve, min. | 0.5 mm ² |
| 2 conductors with same cross section, stranded, TWIN ferrules with plastic sleeve, max. | 6 mm ² |
| Type of connection | Screw connection |
| Stripping length | 11 mm |
| Internal cylindrical gage | B6 |
| Screw thread | M4 |
| Tightening torque, min | 1.5 Nm |
| Tightening torque max | 1.8 Nm |

Certificates / Approvals



Certification

GOST

Accessories

| Item | Designation | Description |
|-----------------|-------------------------------|--|
| Assembly | | |
| 3022218 | CLIPFIX 35 | Snap-on end bracket, for 35 mm NS 35/7.5 or NS 35/15 DIN rail, can be fitted with Zack strip ZB 8 and ZB 8/27, terminal strip marker KLM 2 and KLM, width: 9.5 mm, color: gray |
| 3001394 | D-UKKB 10 | End cover, Length: 77.5 mm, Width: 1.5 mm, Height: 73 mm, Color: gray |
| 1201413 | E/UK 1 | End clamps, for supporting the ends of double-level and three-level terminal blocks, width: 10 mm, color: gray |
| 1201028 | NS 32 AL UNPERF 2000MM | G rail 32 mm (NS 32) |
| 1201280 | NS 32 CU/120QMM UNPERF 2000MM | G-profile DIN rail, deep-drawn, material: Copper, unperforated, height 15 mm, width 32 mm, length 2 m |
| 1201358 | NS 32 CU/35QMM UNPERF 2000MM | G-profile DIN rail, material: Copper, unperforated, height 15 mm, width 32 mm, length 2 m |

| | | |
|---------|-----------------------------|--|
| 1201002 | NS 32 PERF 2000MM | G-profile DIN rail, material: Steel, perforated, height 15 mm, width 32 mm, length 2 m |
| 1201015 | NS 32 UNPERF 2000MM | G-profile DIN rail, material: Steel, unperforated, height 15 mm, width 32 mm, length 2 m |
| 0801762 | NS 35/ 7,5 CU UNPERF 2000MM | DIN rail, material: Copper, unperforated, height 7.5 mm, width 35 mm, length: 2 m |
| 0801733 | NS 35/ 7,5 PERF 2000MM | DIN rail, material: Steel, galvanized and passivated with a thick layer, perforated, height 7.5 mm, width 35 mm, length: 2 m |
| 0801681 | NS 35/ 7,5 UNPERF 2000MM | DIN rail, material: Steel, unperforated, height 7.5 mm, width 35 mm, length: 2 m |
| 1201756 | NS 35/15 AL UNPERF 2000MM | DIN rail, deep-drawn, high profile, unperforated, 1.5 mm thick, material: Aluminum, height 15 mm, width 35 mm, length 2 m |
| 1201895 | NS 35/15 CU UNPERF 2000MM | DIN rail, material: Copper, unperforated, 1.5 mm thick, height 15 mm, width 35 mm, length: 2 m |
| 1201730 | NS 35/15 PERF 2000MM | DIN rail, material: Steel, perforated, height 15 mm, width 35 mm, length: 2 m |
| 1201714 | NS 35/15 UNPERF 2000MM | DIN rail, material: Steel, unperforated, height 15 mm, width 35 mm, length: 2 m |
| 1201798 | NS 35/15-2,3 UNPERF 2000MM | DIN rail, material: Steel, unperforated, 2.3 mm thick, height 15 mm, width 35 mm, length: 2 m |

Bridges

| | | |
|---------|-------------|---|
| 0203153 | EB 2-10 | Insertion bridge, Number of positions: 2, Color: gray |
| 0203328 | EB 3-10 | Insertion bridge, Number of positions: 3, Color: gray |
| 0203137 | EB 10-10 | Insertion bridge, Number of positions: 10, Color: gray |
| 0203483 | FBI 2-10 | Fixed bridge, Number of positions: 2, Color: aluminum |
| 0203276 | FBI 10-10 | Fixed bridge, Number of positions: 10, Color: silver |
| 1303337 | IS-K 10 | Bridge bar isolator, Color: gray |
| 0301521 | ISSBI 10-10 | Bridge bar isolator, Number of positions: 10, Color: silver |
| 0203205 | KB- 10 | Chain bridge, Number of positions: 1, Color: silver |
| 0203234 | SB 2-10/15 | Switching jumper, Number of positions: 2, Color: silver |

Marking

| | | |
|---------|------------------|---|
| 1007248 | SBS10:UNBEDRUCKT | Marker cards, unprinted, for individual labeling with the M-PEN, 250-section, perforated, white plastic |
| 1050525 | ZB10:SO/CMS | Zack strip, 10-section, divisible, special printing, marking according to customer requirements |

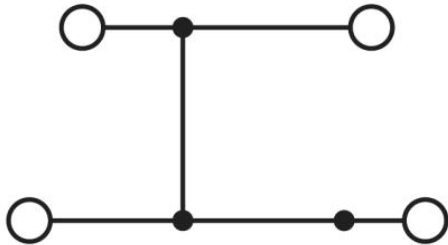
Plug/Adapter

| | | |
|---------|-----------|---|
| 0310541 | KSS 10 | Short-circuit connector, Number of positions: 2, Color: black |
| 0303299 | PSB 4/7/6 | Female test connector, Color: silver |

| | | |
|---------|---------------------|---|
| 0303406 | PSBJ 4/15/6 BK | Female test connector, Color: black |
| 0303354 | PSBJ 4/15/6 BU | Female test connector, Color: blue |
| 0303419 | PSBJ 4/15/6 FARBLOS | Female test connector, Color: transparent |
| 0303370 | PSBJ 4/15/6 GN | Female test connector, Color: green |
| 0303396 | PSBJ 4/15/6 GY | Female test connector, Color: gray |
| 0303325 | PSBJ 4/15/6 RD | Female test connector, Color: red |
| 0303383 | PSBJ 4/15/6 VT | Female test connector, Color: violet |
| 0303312 | PSBJ 4/15/6 WH | Female test connector, Color: white |
| 0303367 | PSBJ 4/15/6 YE | Female test connector, Color: yellow |

Diagrams/Drawings

Circuit diagram



Address

PHOENIX CONTACT Deutschland GmbH
Flachmarktstr. 8
32825 Blomberg, Germany
Phone +49 5235 3 12000
Fax +49 5235 3 41200
<http://www.phoenixcontact.de>



© 2011 Phoenix Contact
Technical modifications reserved;

单击下面可查看定价，库存，交付和生命周期等信息

[>>Phoenix Contact \(菲尼克斯\)](#)