

Housing - HC-B 10-KMQ-H-M1PG16 - 1460294

Please be informed that the data shown in this PDF Document is generated from our Online Catalog. Please find the complete data in the user's documentation. Our General Terms of Use for Downloads are valid (<http://download.phoenixcontact.com>)



HEAVYCON B10 coupling housing, with double locking latch, height: 77.5 mm, with 1 x Pg16 screw connection, straight cable outlet



Key commercial data

| | |
|----------------------|----------|
| Packing unit | 1 pc |
| Custom tariff number | 85389099 |
| Country of origin | Germany |

Technical data

Dimensions

| | |
|-------------------------|------------------|
| Height | 77.5 mm |
| Width | 43 mm |
| Length | 73 mm |
| Wrench size, union nut | 22 mm |
| External cable diameter | 7.5 mm ... 15 mm |

Ambient conditions

| | |
|---------------------------------|-------------------|
| Ambient temperature (operation) | -40 °C ... 125 °C |
|---------------------------------|-------------------|

General

| | |
|------------------------------|--|
| Note | For contact inserts HC-B10, BB18, DD42, M, K8/24 |
| Design | B10 |
| Housing type | Coupling housings |
| Locking type | With double locking latch |
| No. of cable exits | 1 |
| Cable exit | Straight |
| Screw connection | With |
| Type of the screw connection | 1x Pg16 |

Housing - HC-B 10-KMQ-H-M1PG16 - 1460294

Technical data

General

| | |
|------------------------------|-----------------------------|
| Housing material | Aluminum die-cast |
| Housing surface material | Powder-coated, gray |
| Seal material | NBR |
| Material lock | Stainless steel, handle: PA |
| Material grip body interlock | PA |

Classifications

eCl@ss

| | |
|------------|----------|
| eCl@ss 4.0 | 27140816 |
| eCl@ss 4.1 | 27140816 |
| eCl@ss 5.0 | 27143424 |
| eCl@ss 5.1 | 27143424 |
| eCl@ss 6.0 | 27143424 |
| eCl@ss 7.0 | 27440209 |
| eCl@ss 8.0 | 27440209 |

ETIM

| | |
|----------|----------|
| ETIM 3.0 | EC000437 |
| ETIM 4.0 | EC000437 |
| ETIM 5.0 | EC000437 |

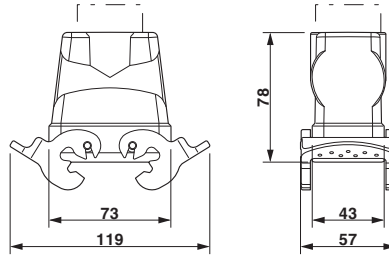
UNSPSC

| | |
|---------------|----------|
| UNSPSC 6.01 | 31261502 |
| UNSPSC 7.0901 | 31261502 |
| UNSPSC 11 | 31261502 |
| UNSPSC 12.01 | 31261502 |
| UNSPSC 13.2 | 31261502 |

Drawings

Housing - HC-B 10-KMQ-H-M1PG16 - 1460294

Dimensioned drawing



Dimensional drawing

© Phoenix Contact 2013 - all rights reserved
<http://www.phoenixcontact.com>

单击下面可查看定价，库存，交付和生命周期等信息

[>>Phoenix Contact\(菲尼克斯\)](#)