

Device connector, rear mounting - RC-07S1N124100 - 1594586

Please be informed that the data shown in this PDF Document is generated from our Online Catalog. Please find the complete data in the user's documentation. Our General Terms of Use for Downloads are valid (<http://phoenixcontact.com/download>)



Device connector for rear wall, straight, Screw locking, M23, Number of positions: 7, Type of contact: Socket, Solder connection, Flat gasket, 4xM3, Panel thickness min.: 2.7 mm, Panel thickness max.: 3.5 mm

The figure shows the 12-pos. product version



Key commercial data

Packing unit	1 pc
Weight per Piece (excluding packing)	30.02 GRM
Custom tariff number	74153300
Country of origin	Germany

Technical data

Product type	Circular connectors (device side)
Number of positions	7
Coding	N
Type	Device connector for rear wall
Mounting type	4xM3
Rated current (IEC)	20
Rated voltage (IEC)	300
Thread	M23
Signal type	Signal

Classifications

eCl@ss

eCl@ss 4.0	272607xx
eCl@ss 4.1	27260701

Device connector, rear mounting - RC-07S1N124100 - 1594586

Classifications

eCl@ss

eCl@ss 5.0	27260701
eCl@ss 5.1	27260701
eCl@ss 6.0	27260708
eCl@ss 7.0	27440312
eCl@ss 8.0	27440103

ETIM

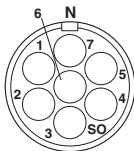
ETIM 3.0	EC001121
ETIM 4.0	EC001121
ETIM 5.0	EC001121

UNSPSC

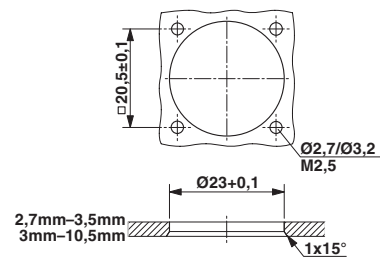
UNSPSC 6.01	43172015
UNSPSC 7.0901	43201404
UNSPSC 11	43172015
UNSPSC 12.01	43201404
UNSPSC 13.2	43201404

Drawings

Schematic diagram



Dimensioned drawing



单击下面可查看定价，库存，交付和生命周期等信息

[>>Phoenix Contact\(菲尼克斯\)](#)