

PSD-S OE LED RFL RD/YE

LED random flashing beacon element, 24 V DC



AUTOMATION

Data sheet
7953_en_01

© PHOENIX CONTACT 2010-08-23

1 Description

This optical signal element is part of a modular signal tower. According to your requirements, a signal tower may comprise any combination of up to five signal elements. You may use up to five optical signal elements or up to four optical and one audible signal element.

An audible signal element can be used as top element only.

A bayonet locking system establishes the mechanical and electrical connection between the elements.

Connection elements with spring-cage or screw connection can be used for electrical connection of the signal tower.

Mounting elements for base or tube mounting can be used to mount the signal tower.

Features

- LED random flashing beacon element, 24 V DC
- Colors: red and yellow
- Degree of protection: IP65, when installed or with cover



Make sure you always use the latest documentation.
It can be downloaded from the product at www.phoenixcontact.net/catalog.



This data sheet is valid for all products listed on the following page:

2 Table of contents

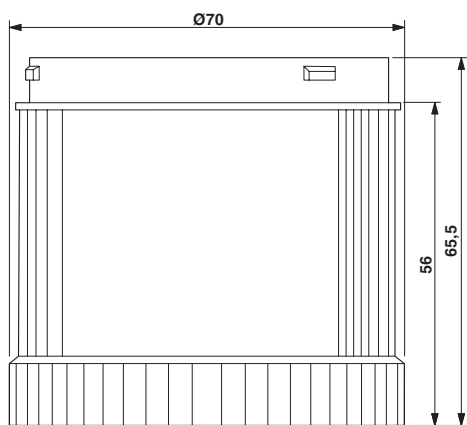
1	Description	1
2	Table of contents	2
3	Ordering data	3
4	Technical Data.....	3
5	Example of a signal tower	4
6	Assembly notes for a signal tower	4
7	Assembling the individual elements.....	5
8	Example for signal tower dimensions	5

3 Ordering data

Description	Type	Order No.	Pcs. / Pkt.
LED random flashing beacon element, 24 V DC, red	PSD-S OE LED RFL RD	2700118	1
LED random flashing beacon element, 24 V DC, yellow	PSD-S OE LED RFL YE	2700126	1

4 Technical Data

Dimensions (in mm)



Diameter	70 mm
Height	65.5 mm

General data

Material	Polycarbonate PC
Calotte color : PSD-S OE LED RFL RD	red
Calotte color : PSD-S OE LED RFL YE	yellow
Weight	78 g
Ambient temperature (operation)	-20 °C ... 50 °C
Degree of protection	IP65, when installed or with cover
Mounting position	Any
Connection	Rubber seal pre-installed for each element

Electrical data

Input voltage	24 V DC
Inrush current	max. 500 mA
Current consumption	350 mA
Optical signal type	LED random flashing beacon (RLF)
Service life, electrical	max. 50,000 h
Operating time	100 %

Approvals / conformities

Conformance with EMC directive 2004/108/EC
 For the latest approvals, please visit www.phoenixcontact.net/catalog.

5 Example of a signal tower

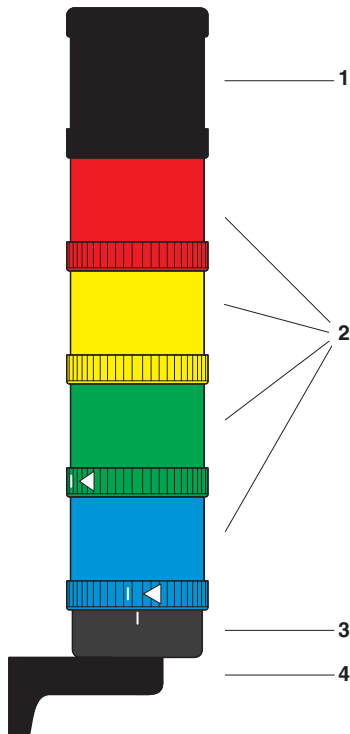


Figure 1 Example of a signal tower

Key:

- 1 Audible signal element
- 2 Optical signal element
- 3 Connection element
- 4 Assembly element

6 Assembly notes for a signal tower

- You may use up to five signal elements in a signal tower.
- Use only one audible element in a signal tower and position this element on top.
- When closing the bayonet locking system, observe the markings (see "Assembling the individual elements").

7 Assembling the individual elements 8 Example for signal tower dimensions

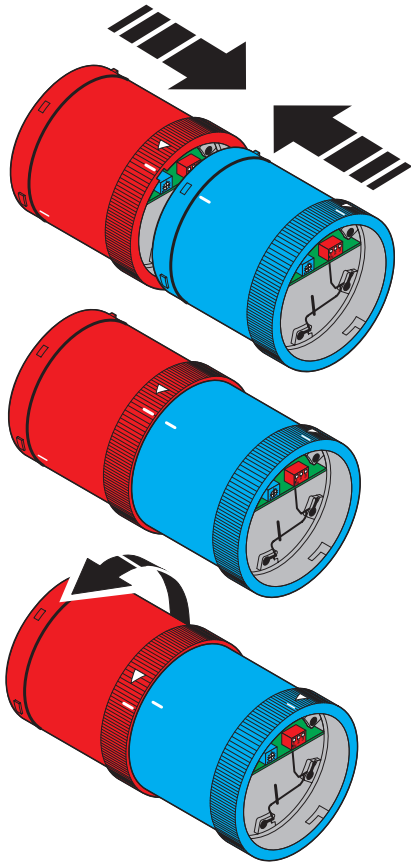


Figure 2 Assembling the individual elements

- Select the elements for your application.
- Connect the elements to be assembled so that the markings are aligned.
- Turn the upper element in the direction of the arrow.

The following figure shows the dimensions of a typical signal tower.

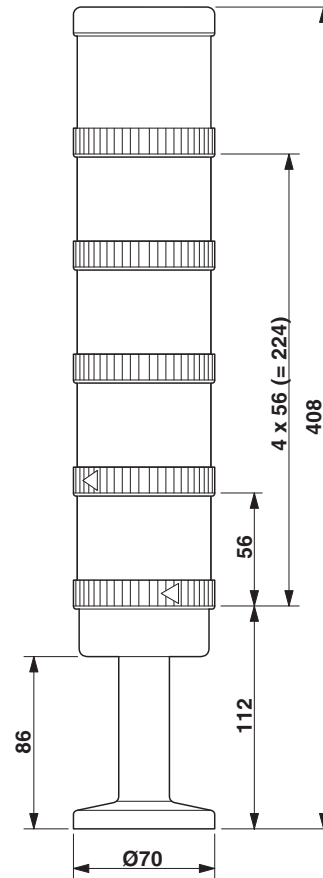


Figure 3 Dimensions of a signal tower (example)

单击下面可查看定价，库存，交付和生命周期等信息

[>>Phoenix Contact\(菲尼克斯\)](#)