

Printed-circuit board connector - BCH-381H-20 GN - 5444440

Please be informed that the data shown in this PDF Document is generated from our Online Catalog. Please find the complete data in the user's documentation. Our General Terms of Use for Downloads are valid (<http://phoenixcontact.com/download>)

Header, Nominal current: 8 A, Rated voltage (III/2): 160 V, Number of positions: 20, Pitch: 3.81 mm, Color: pastel green, Contact surface: Tin, Mounting: Soldering



The figure shows a 5-pos. version of the product in gray



Key commercial data

| | |
|------------------------|----------|
| Packing unit | 1 pc |
| Minimum order quantity | 100 pc |
| Custom tariff number | 85366990 |
| Country of origin | China |

Technical data

Dimensions

| | |
|----------------|--------------|
| Length | 9.2 mm |
| Pitch | 3.81 mm |
| Dimension a | 72.39 mm |
| Pin dimensions | 0,8 x 0,8 mm |
| Hole diameter | 1.2 mm |

General

| | |
|-----------------------------|--------|
| Range of articles | BCH-H |
| Insulating material group | I |
| Rated surge voltage (III/3) | 2.5 kV |
| Rated surge voltage (III/2) | 2.5 kV |
| Rated surge voltage (II/2) | 2.5 kV |
| Rated voltage (III/3) | 160 V |
| Rated voltage (III/2) | 160 V |
| Rated voltage (II/2) | 320 V |

Printed-circuit board connector - BCH-381H-20 GN - 5444440

Technical data

General

| | |
|---|--------------|
| Connection in acc. with standard | EN-VDE |
| Nominal current I _N | 8 A |
| Insulating material | PA |
| Inflammability class according to UL 94 | V0 |
| Color | pastel green |
| Number of positions | 20 |

Classifications

eCl@ss

| | |
|------------|----------|
| eCl@ss 4.0 | 272607xx |
| eCl@ss 4.1 | 27260701 |
| eCl@ss 5.0 | 27260701 |
| eCl@ss 5.1 | 27260701 |
| eCl@ss 6.0 | 27261101 |
| eCl@ss 7.0 | 27440401 |
| eCl@ss 8.0 | 27440402 |

ETIM

| | |
|----------|----------|
| ETIM 3.0 | EC001121 |
| ETIM 4.0 | EC002637 |
| ETIM 5.0 | EC002637 |

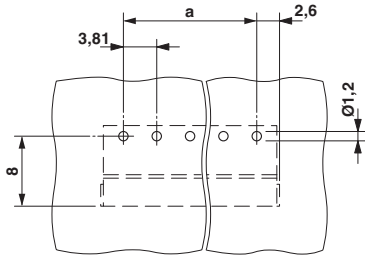
UNSPSC

| | |
|---------------|----------|
| UNSPSC 6.01 | 30211801 |
| UNSPSC 7.0901 | 39121432 |
| UNSPSC 11 | 39121432 |
| UNSPSC 12.01 | 39121409 |
| UNSPSC 13.2 | 39121432 |

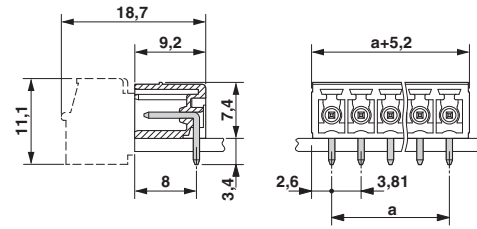
Drawings

Printed-circuit board connector - BCH-381H-20 GN - 5444440

Drilling diagram



Dimensioned drawing



单击下面可查看定价，库存，交付和生命周期等信息

[>>Phoenix Contact \(菲尼克斯\)](#)