

## Bus system flat-type plug - SACCEC-M12MSB-2CON-M16/10-910 - 1525584

Please be informed that the data shown in this PDF Document is generated from our Online Catalog. Please find the complete data in the user's documentation. Our General Terms of Use for Downloads are valid (<http://download.phoenixcontact.com>)



Bus system flush-type plug, PROFIBUS, 2-pos., M12, shielded, B-coded, front/screw mounting with M16 thread, with 10 m bus cable, 2 x 0.25 mm<sup>2</sup>



### Key commercial data

Packing unit	1 1
Weight per Piece (excluding packing)	689.5 GRM
Custom tariff number	85444290
Country of origin	Germany

### Technical data

#### Dimensions

Length of cable	10 m
-----------------	------

#### Ambient conditions

Degree of protection	IP67
----------------------	------

#### General

Rated current at 40°C	4 A
Rated voltage	60 V
Number of positions	2
Contact resistance	≤ 3 mΩ
Insulation resistance	≥ 100 MΩ
Coding	B - inverse
Status display	No
Surge voltage category	II
Pollution degree	3
Test voltage	2500 V

# Bus system flat-type plug - SACCEC-M12MSB-2CON-M16/10-910 - 1525584

## Technical data

### General

Connection method	PROFIBUS
Mounting type	Front mounting M16 x 1.5

### Material

Inflammability class according to UL 94	V0
Contact material	CuZn
Contact surface material	Ni/Au
Material, knurls	Metal

### Cable

Cable type	PROFIBUS
Conductor cross section	0.22 mm <sup>2</sup>
AWG signal line	24
Conductor structure signal line	19x 0.12 mm
Core diameter including insulation	2.55 mm ±0.07 mm
Wire colors	Red, green
Type of pair shielding	Aluminum-lined polyester foil
Overall twist	2 cores with 2 fillers to the core
Shielding	Braided shielding made of galvanized copper wires
Optical shield covering	80 %
External sheath, color	Violet, RAL 4001
External cable diameter	7.80 mm
Smallest bending radius, fixed installation	min. 78 mm
Smallest bending radius, movable installation	min. 78 mm
Number of bending cycles	5000000
Bending radius	78 mm
Traversing path	10 m
Traversing rate	3 m/s
Acceleration	7 m/s <sup>2</sup>
Outer sheath, material	PUR
Material conductor insulation	Foamed PE
Conductor material	Tin-plated Cu litz wires
Insulation resistance	≥ 5 GΩ*km
Conductor resistance	≤ 78.4 mΩ/m
Working capacitance	32 pF (core-core)
Nominal voltage, cable	30 V

# Bus system flat-type plug - SACCEC-M12MSB-2CON-M16/10-910 - 1525584

## Technical data

### Cable

Test voltage Core/Core	1500 V
------------------------	--------

## Classifications

### eCl@ss

eCl@ss 4.0	27140815
eCl@ss 4.1	27140815
eCl@ss 5.0	27143423
eCl@ss 5.1	27143423
eCl@ss 6.0	27143423
eCl@ss 7.0	27449001
eCl@ss 8.0	27449001

### ETIM

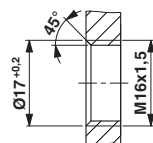
ETIM 2.0	EC001297
ETIM 3.0	EC002061
ETIM 4.0	EC002062
ETIM 5.0	EC002062

### UNSPSC

UNSPSC 6.01	31251501
UNSPSC 7.0901	31251501
UNSPSC 11	31251501
UNSPSC 12.01	31251501
UNSPSC 13.2	31251501

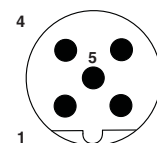
## Drawings

Dimensioned drawing



Housing cutout for M16 fastening thread, mounting panel with thread

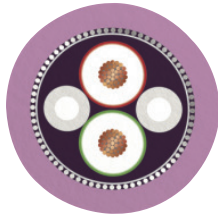
Schematic diagram



Pin assignment M12 male connector, 5-pos., B-coded, male side

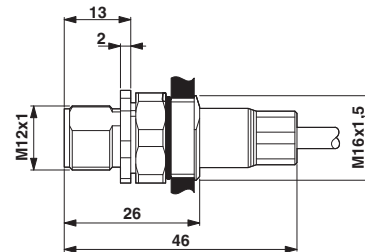
## Bus system flat-type plug - SACCEC-M12MSB-2CON-M16/10-910 - 1525584

Cable cross section



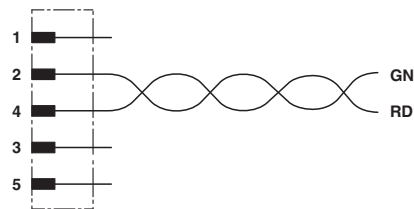
PROFIBUS [910]

Dimensioned drawing



M12 flush-type plug

Circuit diagram



Contact assignment of the M12 plug

单击下面可查看定价，库存，交付和生命周期等信息

[>>Phoenix Contact\(菲尼克斯\)](#)