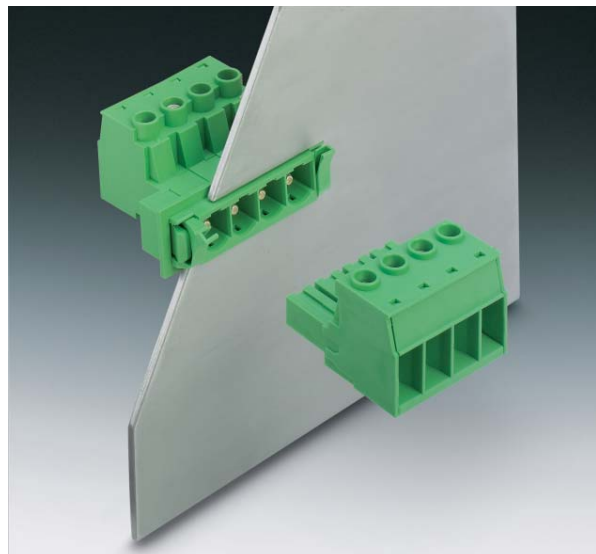


# POWER COMBICON feed-through plugs

## 10.16 mm pitch

### DFK-PC 16/...-ST(F)-10,16

If a 16 mm<sup>2</sup> conductor is used, the new feed-through plug connector offers the possibility to transfer a current of 76 A from inside the device to outside and vice-versa. Just insert DFK-PC 16 into the opening in the housing and fix it in place using the easy-to-use snap-lock mechanism, without the need for additional tools. This version is designed in such a way that there is a screw connection on the device inside to guide cables from outside the device to the inside (or vice-versa). In combination with the standard PC 16 plugs, a cable-cable feed-through fit in the device housing can be realized for 2 to 9 positions. In the STF versions, the shielding function can be guided onto or through the housing wall. The fastening flanges offer vibration-proof connection. The feed-through plug connector is designed for 1.0 to 3.0 mm panel thickness.



#### COMBICON Select

The COMBICON search engine with CAD downloading



COMBICON Select – the printed circuit board connection software supports your workflow from the PCB and housing layout to the ordering process with:

- Systematic and fast selection of products
- Universal Internet aided engineering with extensive CAD downloading
- Easy-to-use e-shopping functions.

[select.phoenixcontact.com/combicon](http://select.phoenixcontact.com/combicon)

#### Note:

In compliance with DIN EN 61984, COMBICON plug connectors come without switching capacity. During designated use, they must not be plugged in or disconnected when carrying voltage or under load.

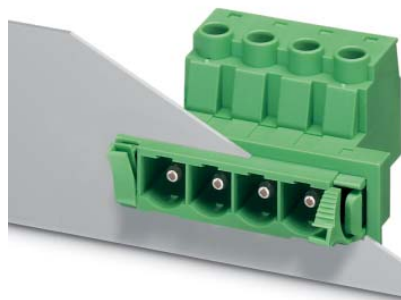


Fast snap-lock mechanism



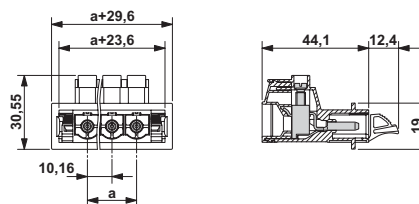
Screw fastening

**POWER COMBICON**  
**Feed-through plugs**  
**DFK-PC 16/...-ST-10,16**  
**10.16 mm Pitch**

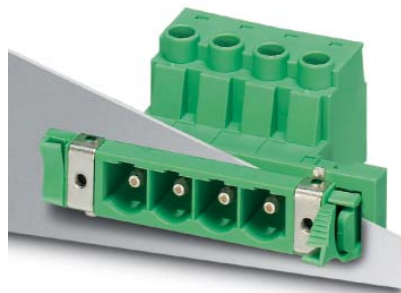


Description	No. of pos.	Dim. a [mm]	Type	Order No.	Pcs./Pkt.
<b>POWER COMBICON plugs, 10.16 mm pitch, color: green</b>	2	10.16	<b>DFK-PC 16/ 2-ST-10,16</b>	<b>1703373</b>	50
	3	20.32	<b>DFK-PC 16/ 3-ST-10,16</b>	<b>1703386</b>	50
	4	30.48	<b>DFK-PC 16/ 4-ST-10,16</b>	<b>1703399</b>	50
	5	40.64	<b>DFK-PC 16/ 5-ST-10,16</b>	<b>1703409</b>	50
	6	50.80	<b>DFK-PC 16/ 6-ST-10,16</b>	<b>1703412</b>	50
	7	60.96	<b>DFK-PC 16/ 7-ST-10,16</b>	<b>1703425</b>	50
	8	71.12	<b>DFK-PC 16/ 8-ST-10,16</b>	<b>1703438</b>	50
	9	81.28	<b>DFK-PC 16/ 9-ST-10,16</b>	<b>1703441</b>	50
	<b>Keying profile</b> , is inserted into the slot on the plug and header, red insulating material			<b>CP-HCC 4</b>	<b>1600027</b>
<b>Screws</b> , (DIN ISO 7049 screw ST 2,9 x 9,5), for fixing feed-through terminal blocks on the housing wall			<b>DFK-PC 16-SS</b>	<b>1705449</b>	20
<b>Screwdriver</b> , to actuate the terminal screws			<b>SZS 1,0 x 4,0</b>	<b>1205066</b>	10
<b>Marker card</b> , with 10 pcs., 10-section marker strips, white, self-adhesive, for 100 terminal blocks			<b>SK 10/5</b> (see COMBICON catalog)		
<b>Crimp pliers</b> , for ferrules of up to 16 mm <sup>2</sup>			<b>CRIMPFOX 16 S</b>	<b>1207983</b>	1
<b>Technical data</b>			see description		
Dimensions			10.16		
Pitch [mm]					
<b>Technical data in accordance with IEC/ DIN VDE</b>					
Insulating material group			I		
Surge voltage category / contamination class			III / 3 III / 2 II / 2		
Rated voltage [V]			1000 1000 1000		
Rated surge voltage [kV]			8 8 6		
Nominal current / cross section [A] / [mm <sup>2</sup> ]			57 <sup>1)</sup> / 10		
Maximum load current / cross section [A] / [mm <sup>2</sup> ]			76 <sup>1)</sup> / 16		
<b>Connection capacity</b>					
Solid / stranded / conductor sizes [mm <sup>2</sup> ] / [mm <sup>2</sup> ] / AWG			0.75 - 16 / 0.75 - 16 / 18 - 6		
Stranded with ferrule without / with plastic sleeve [mm <sup>2</sup> ]			0,5 - 16 <sup>2)</sup> / 0,5 - 16 <sup>2)</sup>		
<b>Multiple connection (2 conductors with same cross section)</b>					
Solid / stranded [mm <sup>2</sup> ]			0.75 - 6 / 0.75 - 6		
Stranded with ferrules without plastic sleeve [mm <sup>2</sup> ]			0.5 - 4		
Stranded with TWIN ferrule with plastic sleeve [mm <sup>2</sup> ]			0.5 - 6		
<b>Stripping length</b> [mm]			14		
<b>Internal cylindrical gage (IEC 60947-1)</b>			A6		
<b>Screw thread</b>			M4		
<b>Tightening torque</b> [Nm]			1.5 - 1.7		
<b>Insulation material</b>			PA		
Inflammability class acc. to UL 94			V0		
<b>Approval data (UL/CUL and CSA)</b>					
Usegroup B [V] / [A] / AWG			600 / 55 / 20 - 6		
Usegroup C [V] / [A] / AWG			600 / 55 / 20 - 6		
Usegroup D [V] / [A] / AWG			on request		

<sup>1)</sup> Observe derating curve  
<sup>2)</sup> Only in connection with CRIMPFOX 16 S

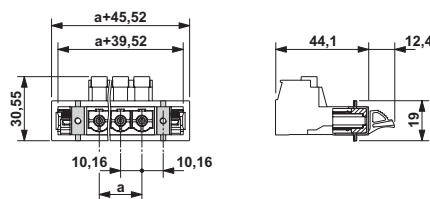


**POWER COMBICON**  
**Feed-through plugs**  
**DFK-PC 16/...-STF-10,16**  
**10.16 mm Pitch**



Description	No. of pos.	Dim. a [mm]	Type	Order No.	Pcs./Pkt.
<b>POWER COMBICON feed-through plugs, 10.16 mm pitch, color: green, with screw flange</b>	2	10.16	<b>DFK-PC 16/ 2-STF-10,16</b>	<b>1703454</b>	50
	3	20.32	<b>DFK-PC 16/ 3-STF-10,16</b>	<b>1703467</b>	50
	4	30.48	<b>DFK-PC 16/ 4-STF-10,16</b>	<b>1703470</b>	50
	5	40.64	<b>DFK-PC 16/ 5-STF-10,16</b>	<b>1703483</b>	50
	6	50.80	<b>DFK-PC 16/ 6-STF-10,16</b>	<b>1703496</b>	50
	7	60.96	<b>DFK-PC 16/ 7-STF-10,16</b>	<b>1703506</b>	50
	8	71.12	<b>DFK-PC 16/ 8-STF-10,16</b>	<b>1703519</b>	50
	9	81.28	<b>DFK-PC 16/ 9-STF-10,16</b>	<b>1703522</b>	50
	<b>Keying profile</b> , is inserted into the slot on the plug and header, red insulating material			<b>CP-HCC 4</b>	<b>1600027</b>
<b>Screws</b> , (DIN ISO 7049 screw ST 2,9 x 9,5), for fixing feed-through terminal blocks on the housing wall			<b>DFK-PC 16-SS</b>	<b>1705449</b>	20
<b>Screwdriver</b> , to actuate the terminal screws			<b>SZS 1,0 x 4,0</b>	<b>1205066</b>	10
<b>Marker card</b> , with 10 pcs., 10-section marker strips, white, self-adhesive, for 100 terminal blocks			<b>SK 10/5</b> (see COMBICON catalog)		
<b>Crimp pliers</b> , for ferrules of up to 16 mm <sup>2</sup>			<b>CRIMPFOX 16 S</b>	<b>1207983</b>	1
<b>Technical data</b>			see description		
Dimensions			10.16		
Pitch		[mm]			
<b>Technical data in accordance with IEC/ DIN VDE</b>					
Insulating material group		-		I	
Surge voltage category / contamination class		- / -	III / 3	III / 2	II / 2
Rated voltage		[V]	1000	1000	1000
Rated surge voltage		[kV]	8	8	6
Nominal current / cross section		[A] / [mm <sup>2</sup> ]		57 <sup>1)</sup> / 10	
Maximum load current / cross section		[A] / [mm <sup>2</sup> ]		76 <sup>1)</sup> / 16	
<b>Connection capacity</b>					
Solid / stranded / conductor sizes		[mm <sup>2</sup> ] / [mm <sup>2</sup> ] / AWG		0.75 - 16 / 0.75 - 16 / 18 - 6	
Stranded with ferrule without / with plastic sleeve		[mm <sup>2</sup> ]		0,5 - 16 <sup>2)</sup> / 0,5 - 16 <sup>2)</sup>	
<b>Multiple connection (2 conductors with same cross section)</b>					
Solid / stranded		[mm <sup>2</sup> ]		0.75 - 6 / 0.75 - 6	
Stranded with ferrules without plastic sleeve		[mm <sup>2</sup> ]		0.5 - 4	
Stranded with TWIN ferrule with plastic sleeve		[mm <sup>2</sup> ]		0.5 - 6	
<b>Stripping length</b>		[mm]		14	
<b>Internal cylindrical gage (IEC 60947-1)</b>		-		A6	
<b>Screw thread</b>		-		M4	
<b>Tightening torque</b>		[Nm]		1.5 - 1.7	
<b>Insulation material</b>				PA	
Inflammability class acc. to UL 94				V0	
<b>Approval data (UL/CUL and CSA)</b>					
Usegroup B		[V] / [A] / AWG		600 / 55 / 20 - 6	
Usegroup C		[V] / [A] / AWG		600 / 55 / 20 - 6	
Usegroup D		[V] / [A] / AWG		on request	

<sup>1)</sup> Observe derating curve  
<sup>2)</sup> Only in connection with CRIMPFOX 16 S

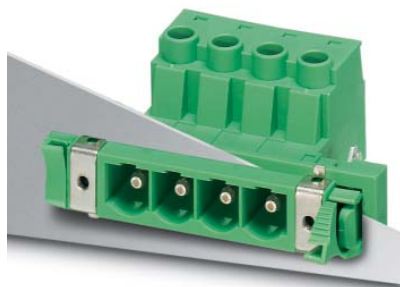


# POWER COMBICON

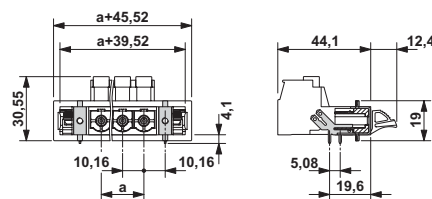
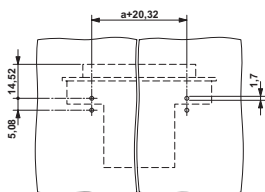
## Feed-through plugs

### DFK-PC 16/...-STF-SH-10,16

#### 10.16 mm Pitch

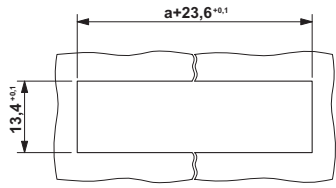


Description	No. of pos.	Dim. a [mm]	Type	Order No.	Pcs./Pkt.
<b>POWER COMBICON feed-through plugs, 10.16 mm pitch, color: green, shielded version, with screw flange</b>	2	10.16	<b>DFK-PC 16/ 2-STF-SH-10,16</b>	<b>1703616</b>	50
	3	20.32	<b>DFK-PC 16/ 3-STF-SH-10,16</b>	<b>1703629</b>	50
	4	30.48	<b>DFK-PC 16/ 4-STF-SH-10,16</b>	<b>1703632</b>	50
	5	40.64	<b>DFK-PC 16/ 5-STF-SH-10,16</b>	<b>1703645</b>	50
	6	50.80	<b>DFK-PC 16/ 6-STF-SH-10,16</b>	<b>1703658</b>	50
	7	60.96	<b>DFK-PC 16/ 7-STF-SH-10,16</b>	<b>1703661</b>	50
	8	71.12	<b>DFK-PC 16/ 8-STF-SH-10,16</b>	<b>1703674</b>	50
	9	81.28	<b>DFK-PC 16/ 9-STF-SH-10,16</b>	<b>1703687</b>	50
<b>Keying profile</b> , is inserted into the slot on the plug and header, red insulating material			<b>CP-HCC 4</b>	<b>1600027</b>	50
<b>Screws</b> , (DIN ISO 7049 screw ST 2,9 x 9,5), for fixing feed-through terminal blocks on the housing wall			<b>DFK-PC 16-SS</b>	<b>1705449</b>	20
<b>Screwdriver</b> , to actuate the terminal screws			<b>SZS 1,0 x 4,0</b>	<b>1205066</b>	10
<b>Marker card</b> , with 10 pcs., 10-section marker strips, white, self-adhesive, for 100 terminal blocks			<b>SK 10/5</b> (see COMBICON catalog)		
<b>Crimp pliers</b> , for ferrules of up to 16 mm <sup>2</sup>			<b>CRIMPFOX 16 S</b>	<b>1207983</b>	1
<b>Technical data</b>					
Dimensions				see description	
Pitch		[mm]		10.16	
<b>Technical data in accordance with IEC/ DIN VDE</b>					
Insulating material group		-		I	
Surge voltage category / contamination class		- / -		III / 3    III / 2    II / 2	
Rated voltage		[V]		1000    1000    1000	
Rated surge voltage		[kV]		8    8    6	
Nominal current / cross section		[A] / [mm <sup>2</sup> ]		57 <sup>1)</sup> / 10	
Maximum load current / cross section		[A] / [mm <sup>2</sup> ]		76 <sup>1)</sup> / 16	
<b>Connection capacity</b>					
Solid / stranded / conductor sizes		[mm <sup>2</sup> ] / [mm <sup>2</sup> ] / AWG		0.75 - 16 / 0.75 - 16 / 18 - 6	
Stranded with ferrule without / with plastic sleeve		[mm <sup>2</sup> ]		0,5 - 16 <sup>2)</sup> / 0,5 - 16 <sup>2)</sup>	
<b>Multiple connection (2 conductors with same cross section)</b>					
Solid / stranded		[mm <sup>2</sup> ]		0.75 - 6 / 0.75 - 6	
Stranded with ferrules without plastic sleeve		[mm <sup>2</sup> ]		0.5 - 4	
Stranded with TWIN ferrule with plastic sleeve		[mm <sup>2</sup> ]		0.5 - 6	
<b>Stripping length</b>		[mm]		14	
<b>Internal cylindrical gage (IEC 60947-1)</b>		-		A6	
<b>Screw thread</b>		-		M4	
<b>Tightening torque</b>		[Nm]		1.5 - 1.7	
<b>Insulation material</b>				PA	
Inflammability class acc. to UL 94				V0	
<b>Approval data (UL/CUL and CSA)</b>					
Usegroup B		[V] / [A] / AWG		600 / 55 / 20 - 6	
Usegroup C		[V] / [A] / AWG		600 / 55 / 20 - 6	
Usegroup D		[V] / [A] / AWG		on request	

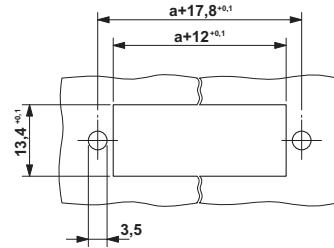


<sup>1)</sup> Observe derating curve

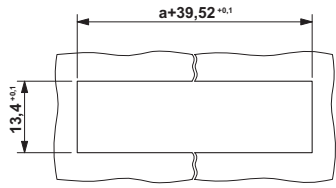
<sup>2)</sup> Only in connection with CRIMPFOX 16 S



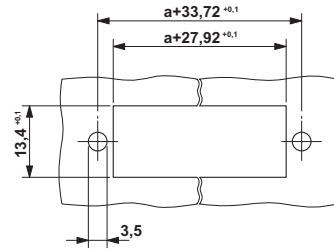
Sheet metal cutout for snap-lock mechanism for "ST" versions



Sheet metal cutout for screw connection for "ST" versions

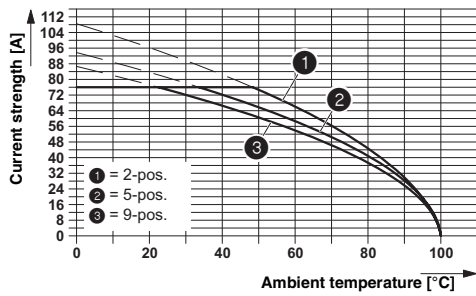


Sheet metal cutout for snap-lock mechanism for "STF" versions



Sheet metal cutout for screw connection for "STF" versions

**Derating curve**  
 Type: PC 16/...-ST-10,16 with DFK-PC 16/...-ST-10,16  
 Connected conductor cross section = 16 mm<sup>2</sup>  
 Reduction factor = 0.8  
 Number of positions = see diagram



单击下面可查看定价，库存，交付和生命周期等信息

[>>Phoenix Contact\(菲尼克斯\)](#)