

S-PT1-2PE-24DC/P

Order No.: 2818216



<http://eshop.phoenixcontact.de/phoenix/treeViewClick.do?UID=2818216>

Spare PCB for screw-in module for conduit systems, with two conductor protection for a 2-core floating signal circuit. Design: 24 V DC

Commercial data

GTIN (EAN)	 4 017918 148409
Note	Made-to-order
sales group	J330
Pack	10 pcs.
Customs tariff	85363010
Catalog page information	Page 55 (TT-2002)

Product notes

WEEE/RoHS-compliant since:
07/27/2006



<http://www.download.phoenixcontact.com>
Please note that the data given here has been taken from the online catalog. For comprehensive information and data, please refer to the user documentation. The General Terms and Conditions of Use apply to Internet downloads.

Technical data

General

Ambient temperature (operation)	-40 °C ... 65 °C
Mounting type	Connection-specific intermediate plugging
Design	Screw-in module
Direction of action	Line-Line & Line-Earth Ground

Protective circuit

Nominal voltage U_N	24 V DC
Nominal current I_N	250 mA (25°C)
Operating effective current I_c at U_c	$\leq 5 \mu\text{A}$
Nominal discharge surge current I_n (8/20) μs (Core-Core)	10 kA
Output voltage limitation at 1 kV/ μs (Core-Core) spike	≤ 40 V
Output voltage limitation at 1 kV/ μs (Core-Earth) spike	≤ 450 V
Protection level U_p (Core-Core)	≤ 55 V
Protection level U_p (Core-Earth)	≤ 550 V
Response time t_A (Core-Core)	≤ 1 ns
Response time t_A (Core-Earth)	≤ 100 ns
Resistance in series	10 Ω

Connection data

Conductor cross section stranded min.	0.14 mm ²
Conductor cross section stranded max.	1.5 mm ²
Conductor cross section solid min.	0.14 mm ²
Conductor cross section solid max.	1.5 mm ²
Conductor cross section AWG/kcmil min.	26
Conductor cross section AWG/kcmil max	16

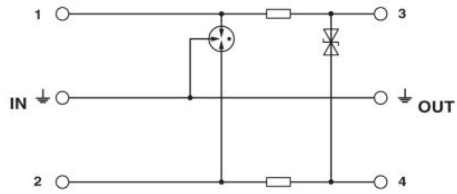
Certificates / Approvals



Certification GOST, UL
Certification Ex: CUL-EX LIS, UL-EX LIS

Diagrams/Drawings

Circuit diagram



Address

PHOENIX CONTACT Deutschland GmbH
Flachmarktstr. 8
32825 Blomberg, Germany
Phone +49 5235 3 12000
Fax +49 5235 3 41200
<http://www.phoenixcontact.de>



© 2011 Phoenix Contact
Technical modifications reserved;

单击下面可查看定价，库存，交付和生命周期等信息

[>>Phoenix Contact\(菲尼克斯\)](#)