

Surge protection device - PT-IQ-2X2+F-24DC-PT - 2801264

Please be informed that the data shown in this PDF Document is generated from our Online Catalog. Please find the complete data in the user's documentation. Our General Terms of Use for Downloads are valid (<http://phoenixcontact.com/download>)



Surge protection, consisting of protective plug and base element, with integrated multi-stage status indicator on the module for two 2-wire floating signal circuits. Indirect grounding via gas-filled surge arrester.

The figure shows the PT-IQ-2x2-24DC-PT version



Key commercial data

| | |
|--------------------------------------|-----------|
| Packing unit | 1 pc |
| Weight per Piece (excluding packing) | 160.0 GRM |
| Custom tariff number | 85363030 |
| Country of origin | Germany |

Technical data

Dimensions

| | |
|------------------|----------|
| Height | 109.3 mm |
| Width | 17.7 mm |
| Depth | 77.5 mm |
| Horizontal pitch | 1 Div. |

Ambient conditions

| | |
|---|------------------|
| Ambient temperature (operation) | -40 °C ... 70 °C |
| Ambient temperature (storage/transport) | -40 °C ... 85 °C |
| Degree of protection | IP20 |

General

| | |
|---|-------------------|
| Housing material | PA 6.6 |
| Inflammability class according to UL 94 | V0 |
| Color | black |
| Mounting type | DIN rail mounting |

Surge protection device - PT-IQ-2X2+F-24DC-PT - 2801264

Technical data

General

| | |
|---------------------|--|
| Type | DIN rail module, two-section, divisible |
| Direction of action | Line-Line & Line-Signal Ground/Shield & optional Signal Ground/Shield-Earth Ground |

Protective circuit

| | |
|--|---|
| IEC test classification | C1 |
| | C2 |
| | C3 |
| | D1 |
| Nominal voltage U_N | 24 V DC |
| Maximum continuous operating voltage U_C | 30 V DC |
| | 21 V AC |
| Nominal current I_N | 700 mA (up to 50°C) |
| Operating effective current I_C at U_C | ≤ 1 mA (per system) |
| Residual current I_{PE} | ≤ 1 μ A |
| Nominal discharge current I_n (8/20) μ s (Core-Core) | 10 kA |
| Nominal discharge current I_n (8/20) μ s (Core-Earth) | 10 kA |
| Impulse discharge current (10/350) μ s, peak value I_{imp} | 2.5 kA |
| Voltage protection level U_P (Core-Core) | ≤ 80 V (C1 - 1 kV/500 A) |
| | ≤ 130 V (C2 - 10 kV / 5 kA) |
| | ≤ 55 V (C3 - 25 A) |
| Voltage protection level U_P (Core-Earth) | ≤ 900 V (C1 - 1 kV/500 A) |
| | ≤ 1300 V (C2 - 10 kV / 5 kA) |
| | ≤ 1000 V (C3 - 25 A) |
| Voltage protection level U_P (Core-GND) | ≤ 600 V (C1 - 1 kV/500 A) |
| | ≤ 750 V (C2 - 10 kV / 5 kA) |
| | ≤ 700 V (C3 - 25 A) |
| Voltage protection level U_P static (core-core) | ≤ 65 V (C1 - 1 kV/500 A) |
| Voltage protection level U_P static (core-ground) | ≤ 130 V (C2 - 10 kV / 5 kA) |
| Voltage protection level U_P static (core-GND) | ≤ 60 V (C2 - 10 kV / 5 kA) |
| | ≤ 40 V (C3 - 25 A) |
| Response time t_A (Core-Core) | ≤ 1 ns |
| Response time t_A (Core-Earth) | ≤ 100 ns |
| | ≤ 100 ns |
| Input attenuation a_E , sym. | typ. 0.3 dB (≤ 270 kHz/150 Ω) |
| Cut-off frequency f_g (3 dB), sym. in 150 Ohm system | typ. 1.1 MHz |
| Capacity (Core-Core) | typ. 2 nF |

Surge protection device - PT-IQ-2X2+F-24DC-PT - 2801264

Technical data

Protective circuit

| | |
|---|-----------------------------------|
| Resistance in series | 1.2 Ω \pm 5 % (per path) |
| Surge protection fault message | Optical, multi-stage |
| Max. required back-up fuse | 0.8 A (FF) |
| Surge carrying capacity in acc. with IEC 61643-21 (Core-Core) | C3 - 25 A |
| Surge carrying capacity in acc. with IEC 61643-21 (Core-Earth) | C2 - 10 kA |
| | D1 - 2,5 kA |
| | C3 - 25 A |
| Surge carrying capacity in acc. with IEC 61643-21 (Core-GND) | C2 - 10 kA |
| | C3 - 25 A |
| Pulse reset time t_r in acc. with IEC 61643-21 (Core-Core) | \leq 4000 ms |
| Pulse reset time t_r in acc. with IEC 61643-21 (Core-Earth) | \leq 30 ms |
| Pulse reset time t_r in acc. with IEC 61643-21 (Core-GND) | \leq 2600 ms |
| Overload failure mode as per IEC 61643-21 (plug) | 2 |
| Overload failure mode as per IEC 61643-21 (GND-Ground base element) | 2 |

Connection data

| | |
|--|---------------------|
| Connection method | Push-in connection |
| Connection type IN | Push-in connection |
| Connection type OUT | Push-in connection |
| Stripping length | 10 mm |
| Conductor cross section stranded min. | 0.2 mm ² |
| Conductor cross section stranded max. | 2.5 mm ² |
| Conductor cross section solid min. | 0.2 mm ² |
| Conductor cross section solid max. | 4 mm ² |
| Conductor cross section AWG/kcmil min. | 20 |
| Conductor cross section AWG/kcmil max | 12 |

Connection, equipotential bonding

| | |
|-------------------|---|
| Connection method | NS 35 DIN rail or connection terminal block |
|-------------------|---|

Classifications

eCl@ss

| | |
|------------|----------|
| eCl@ss 4.0 | 27140201 |
| eCl@ss 4.1 | 27130801 |
| eCl@ss 5.0 | 27130801 |
| eCl@ss 5.1 | 27130801 |
| eCl@ss 6.0 | 27130807 |

Surge protection device - PT-IQ-2X2+F-24DC-PT - 2801264

Classifications

eCl@ss

| | |
|------------|----------|
| eCl@ss 7.0 | 27130807 |
| eCl@ss 8.0 | 27130807 |

ETIM

| | |
|----------|----------|
| ETIM 3.0 | EC000943 |
| ETIM 4.0 | EC000943 |
| ETIM 5.0 | EC000943 |

UNSPSC

| | |
|---------------|----------|
| UNSPSC 6.01 | 30212010 |
| UNSPSC 7.0901 | 39121610 |
| UNSPSC 11 | 39121610 |
| UNSPSC 12.01 | 39121610 |
| UNSPSC 13.2 | 39121620 |

Approvals

Approvals

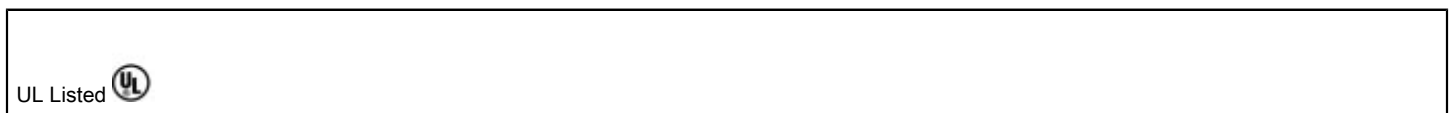
Approvals

UL Listed

Ex Approvals

Approvals submitted

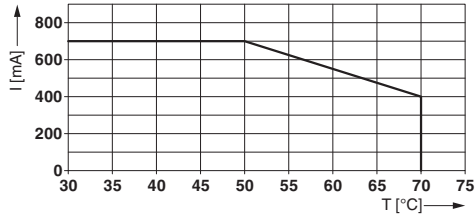
Approval details



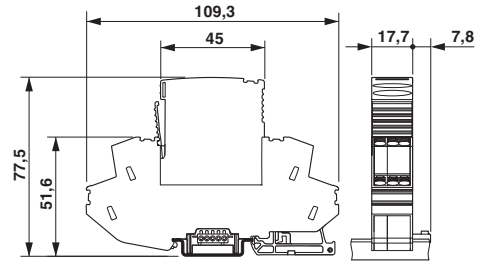
Drawings

Surge protection device - PT-IQ-2X2+F-24DC-PT - 2801264

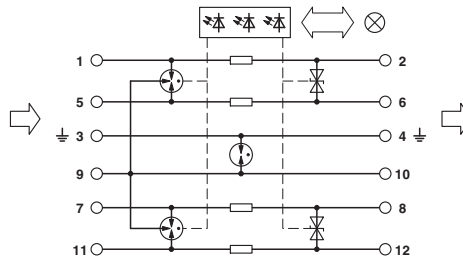
Diagram



Dimensioned drawing



Circuit diagram



单击下面可查看定价，库存，交付和生命周期等信息

[>>Phoenix Contact\(菲尼克斯\)](#)