

Mounting material - PSD-S ME T-P 45 - 2700152

Please be informed that the data shown in this PDF Document is generated from our Online Catalog. Please find the complete data in the user's documentation. Our General Terms of Use for Downloads are valid (<http://phoenixcontact.com/download>)



Tube, 45 mm long, Ø 25 mm, for direct tube mounting on the foldaway base



Key commercial data

Packing unit	1 pc
Weight per Piece (excluding packing)	20.0 GRM
Custom tariff number	85318095
Country of origin	Germany

Technical data

Dimensions

Diameter	25 mm
Height	45 mm

Ambient conditions

Ambient temperature (operation)	-20 °C ... 60 °C
---------------------------------	------------------

General

Material	PE
Color	black
Weight	13 g
Mounting position	any
Mounting type	Tube mounting
Assembly instructions	for foldaway base

Mounting material - PSD-S ME T-P 45 - 2700152

Classifications

eCl@ss

eCl@ss 4.0	27143203
eCl@ss 4.1	27143203
eCl@ss 5.0	27371235
eCl@ss 5.1	27371235
eCl@ss 6.0	27371235
eCl@ss 7.0	27371235
eCl@ss 8.0	27371235

ETIM

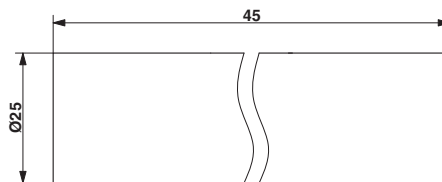
ETIM 3.0	EC001155
ETIM 4.0	EC001155
ETIM 5.0	EC001155

UNSPSC

UNSPSC 6.01	43172015
UNSPSC 7.0901	43201404
UNSPSC 11	39121311
UNSPSC 12.01	39121311
UNSPSC 13.2	39121311

Drawings

Dimensioned drawing



单击下面可查看定价，库存，交付和生命周期等信息

[>>Phoenix Contact\(菲尼克斯\)](#)