

COMBICON Spring Cage Plug Components FKCT 2,5/...-ST and FKCT 2,5/...-STF with a 5.0 or 5.08 mm Pitch

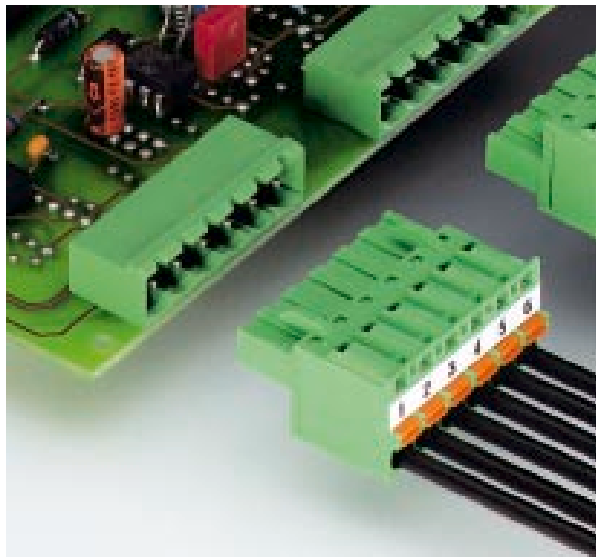
With the new FKCT 2,5 plug component, a T-shaped spring cage version is now available. As opposed to its sister, model FKCT 2,5/...-ST, the T-shape of this connector means it is arranged below the p.c.b., still using the same pin strips. This results in a lower overall height of modules, and distances to neighboring p.c.b.s can be considerably reduced.

Fast conductor connection is carried out using the "plug and play principle", i.e. rigid or flexible conductors with ferrule can be inserted directly into the terminal point without activating the opening lever, where they make contact automatically.

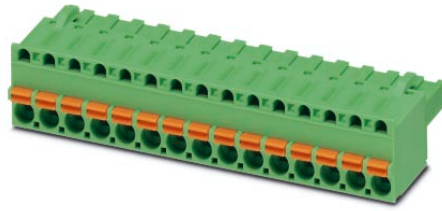
In addition, all connectors have two test connections in order to accept 2 mm \varnothing test pins or 2.3 mm \varnothing test plugs.

As an option, all plug components are also available with screw flange for a vibration-resistant connection with the headers with threaded flange.

They are labeled with the self-adhesive SK 5/3,8 or SK 5,08/3,8 marker cards (see COMBICON catalog).



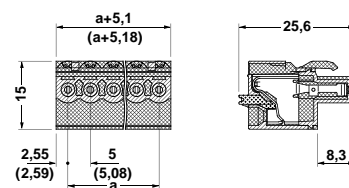
FKCT 2,5/...-ST 5.0 and 5.08 mm Pitch



| Description | No. of positions | Dim. a [mm] | Type | Order No. | Pcs./Pkt. |
|--|---|-------------|---------------------|--------------------|-----------|
| Plugs, 5.0 mm pitch, color: green For further no. of positions, see COMBICON catalog | 2 | 5 | FKCT 2,5/2-ST | 19 09 21 0 | 50 |
| | 3 | 10 | FKCT 2,5/3-ST | 19 09 22 3 | |
| | 4 | 15 | FKCT 2,5/4-ST | 19 09 23 6 | |
| | 5 | 20 | FKCT 2,5/5-ST | 19 09 24 9 | |
| | 6 | 25 | FKCT 2,5/6-ST | 19 09 25 2 | |
| | 7 | 30 | FKCT 2,5/7-ST | 19 09 26 5 | |
| | 8 | 35 | FKCT 2,5/8-ST | 19 09 27 8 | |
| | 9 | 40 | FKCT 2,5/9-ST | 19 09 28 1 | |
| | 10 | 45 | FKCT 2,5/10-ST | 19 09 29 4 | |
| | 11 | 50 | FKCT 2,5/11-ST | 19 09 30 4 | |
| | 12 | 55 | FKCT 2,5/12-ST | 19 09 31 7 | |
| | 13 | 60 | FKCT 2,5/13-ST | 19 09 32 0 | |
| | 14 | 65 | FKCT 2,5/14-ST | 19 09 33 3 | |
| | 15 | 70 | FKCT 2,5/15-ST | 19 09 34 6 | |
| | 16 | 75 | FKCT 2,5/16-ST | 19 09 35 9 | |
| | Plugs, 5.08 mm pitch, color: green For further no. of positions, see COMBICON catalog | 2 | 5.08 | FKCT 2,5/2-ST-5,08 | |
| 3 | | 10.16 | FKCT 2,5/3-ST-5,08 | 19 02 12 3 | |
| 4 | | 15.24 | FKCT 2,5/4-ST-5,08 | 19 02 13 6 | |
| 5 | | 20.32 | FKCT 2,5/5-ST-5,08 | 19 02 14 9 | |
| 6 | | 25.40 | FKCT 2,5/6-ST-5,08 | 19 02 15 2 | |
| 7 | | 30.48 | FKCT 2,5/7-ST-5,08 | 19 02 16 5 | |
| 8 | | 35.56 | FKCT 2,5/8-ST-5,08 | 19 02 17 8 | |
| 9 | | 40.64 | FKCT 2,5/9-ST-5,08 | 19 02 18 1 | |
| 10 | | 45.72 | FKCT 2,5/10-ST-5,08 | 19 02 19 4 | |
| 11 | | 50.80 | FKCT 2,5/11-ST-5,08 | 19 02 20 4 | |
| 12 | | 55.88 | FKCT 2,5/12-ST-5,08 | 19 02 21 7 | |
| 13 | | 60.96 | FKCT 2,5/13-ST-5,08 | 19 02 22 0 | |
| 14 | | 66.04 | FKCT 2,5/14-ST-5,08 | 19 02 23 3 | |
| 15 | | 71.12 | FKCT 2,5/15-ST-5,08 | 19 02 24 6 | |
| 16 | | 76.20 | FKCT 2,5/16-ST-5,08 | 19 02 25 9 | |

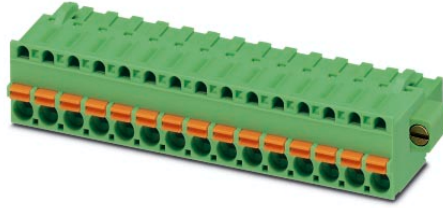
Technical Data

| | | | |
|---|---|---------------------------------|--------|
| Dimensions | see description | | |
| Pitch | [mm] | 5.0/5.08 | |
| Technical data in accordance with IEC/ DIN VDE | | | |
| Insulation material group | - | III / 3 | I |
| Surge voltage category / contamination class | -/- | III / 2 | II / 2 |
| Rated voltage | [V] | 320 | 630 |
| Rated surge voltage | [kV] | 4 | 4 |
| Nominal current / cross section | [A]/[mm ²] | 12 / 2.5 | |
| Maximum load current / cross section | [A]/[mm ²] | 12 / 2.5 | |
| Connection capacity | | | |
| solid / stranded / conductor sizes | [mm ²]/[mm ²]/AWG | 0.2 - 2.5 / 0.2 - 2.5 / 24 - 12 | |
| stranded with ferrules without / with plastic collar | [mm ²] | 0.2 - 2.5 / 0.2 - 2.5 | |
| Multiple connection (2 conductors with same cross section) | | | |
| Stranded with TWIN ferrule with plastic sleeve | [mm ²] | 0.5 - 1 | |
| Stripping length | [mm] | 10 | |
| Internal cylindrical gage (IEC 60 947-1) | - | A2 | |
| Insulation material | - | PA | |
| Inflammability class acc. to UL 94 | - | V0 | |



FKCT 2,5/...-STF

Pitch 5.0 and 5.08 mm

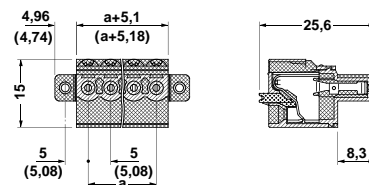


| Description | No. of positions | Dim. a [mm] | Type | Order No. | Pcs./Pkt. |
|--|---|-------------|----------------------|---------------------|-----------|
| Plugs, 5.0 mm pitch, color: green For further no. of positions, see COMBICON catalogue | 2 | 5 | FKCT 2,5/2-STF | 19 09 40 1 | 50 |
| | 3 | 10 | FKCT 2,5/3-STF | 19 09 41 4 | |
| | 4 | 15 | FKCT 2,5/4-STF | 19 09 42 7 | |
| | 5 | 20 | FKCT 2,5/5-STF | 19 09 43 0 | |
| | 6 | 25 | FKCT 2,5/6-STF | 19 09 44 3 | |
| | 7 | 30 | FKCT 2,5/7-STF | 19 09 45 6 | |
| | 8 | 35 | FKCT 2,5/8-STF | 19 09 46 9 | |
| | 9 | 40 | FKCT 2,5/9-STF | 19 09 47 2 | |
| | 10 | 45 | FKCT 2,5/10-STF | 19 09 48 5 | |
| | 11 | 50 | FKCT 2,5/11-STF | 19 09 49 8 | |
| | 12 | 55 | FKCT 2,5/12-STF | 19 09 50 8 | |
| | 13 | 60 | FKCT 2,5/13-STF | 19 09 51 1 | |
| | 14 | 65 | FKCT 2,5/14-STF | 19 09 52 4 | |
| | 15 | 70 | FKCT 2,5/15-STF | 19 09 53 7 | |
| | 16 | 75 | FKCT 2,5/16-STF | 19 09 54 0 | |
| | Plugs, 5.08 mm pitch, color: green For further no. of positions, see COMBICON catalogue | 2 | 5.08 | FKCT 2,5/2-STF-5,08 | |
| 3 | | 10.16 | FKCT 2,5/3-STF-5,08 | 19 02 31 4 | |
| 4 | | 15.24 | FKCT 2,5/4-STF-5,08 | 19 02 32 7 | |
| 5 | | 20.32 | FKCT 2,5/5-STF-5,08 | 19 02 33 0 | |
| 6 | | 25.40 | FKCT 2,5/6-STF-5,08 | 19 02 34 3 | |
| 7 | | 30.48 | FKCT 2,5/7-STF-5,08 | 19 02 35 6 | |
| 8 | | 35.56 | FKCT 2,5/8-STF-5,08 | 19 02 36 9 | |
| 9 | | 40.64 | FKCT 2,5/9-STF-5,08 | 19 02 37 2 | |
| 10 | | 45.72 | FKCT 2,5/10-STF-5,08 | 1902 38 5 | |
| 11 | | 50.80 | FKCT 2,5/11-STF-5,08 | 19 02 39 8 | |
| 12 | | 55.88 | FKCT 2,5/12-STF-5,08 | 19 02 40 8 | |
| 13 | | 60.96 | FKCT 2,5/13-STF-5,08 | 19 02 41 1 | |
| 14 | | 66.04 | FKCT 2,5/14-STF-5,08 | 19 02 42 4 | |
| 15 | | 71.12 | FKCT 2,5/15-STF-5,08 | 19 02 43 7 | |
| 16 | | 76.20 | FKCT 2,5/16-STF-5,08 | 19 02 44 0 | |

Technical Data

| | |
|---|---|
| Dimensions | |
| Pitch | [mm] |
| Technical data in accordance with IEC/ DIN VDE | |
| Insulation material group | - |
| Surge voltage category / contamination class | -/- |
| Rated voltage | [V] |
| Rated surge voltage | [kV] |
| Nominal current / cross section | [A]/[mm ²] |
| Maximum load current / cross section | [A]/[mm ²] |
| Connection capacity | |
| solid / stranded / conductor sizes | [mm ²]/[mm ²]/AWG |
| stranded with ferrules without / with plastic collar | [mm ²] |
| Multiple connection (2 conductors with same cross section) | |
| Stranded with TWIN ferrule with plastic sleeve | [mm ²] |
| Stripping length | [mm] |
| Internal cylindrical gage (IEC 60 947-1) | - |
| Insulation material | |
| Inflammability class acc. to UL 94 | |

| | | |
|-----------------|---------------------------------|--------|
| see description | | |
| 5.0/5.08 | | |
| | I | |
| III / 3 | III / 2 | II / 2 |
| 320 | 320 | 630 |
| 4 | 4 | 4 |
| | 12 / 2.5 | |
| | 12 / 2.5 | |
| | 0.2 - 2.5 / 0.2 - 2.5 / 24 - 12 | |
| | 0.2 - 2.5 / 0.2 - 2.5 | |
| | 0.5 - 1 | |
| | 10 | |
| | A2 | |
| | PA | |
| | V0 | |



© PHOENIX CONTACT 01_04_03 TNR: 5099058-01 http://www.phoenixcontact.com

单击下面可查看定价，库存，交付和生命周期等信息

[>>Phoenix Contact\(菲尼克斯\)](#)