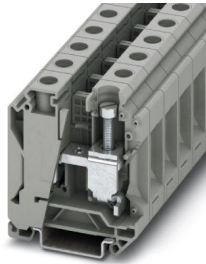


# Feed-through terminal block - UK 35 N

3074130

<https://www.phoenixcontact.com/in/products/3074130>

Please be informed that the data shown in this PDF document is generated from our Online Catalog. Please find the complete data in the user documentation. Our General Terms of Use for Downloads are valid.



Feed-through terminal block, nom. voltage: 1000 V, nominal current: 125 A, connection method: Screw connection, Rated cross section: 35 mm<sup>2</sup>, cross section: 10 mm<sup>2</sup> - 35 mm<sup>2</sup>, mounting type: NS 35/7,5, NS 35/15, color: gray

## Your advantages

- The large wiring space enables the connection of solid and stranded conductors without ferrules, even above the nominal cross section
- As well as saving space, the compact design enables user-friendly wiring in a small amount of space
- Optimum screwdriver guidance through closed screw shafts

# Feed-through terminal block - UK 35 N



3074130

<https://www.phoenixcontact.com/in/products/3074130>

## Commercial Data

Order Key	3074130
Packing unit	50 pc
Minimum order quantity	50 pc
Sales Key	BE1
Product Key	BE1211
Catalog Page	Page 461 (C-1-2019)
GTIN	4046356347297
Weight per Piece (including packing)	54.2 g
Weight per Piece (excluding packing)	51.15 g
Customs tariff number	85369010
Country of origin	CN

# Feed-through terminal block - UK 35 N



3074130

<https://www.phoenixcontact.com/in/products/3074130>

## Technical Data

### Product properties

Number of connections	2
Number of rows	1
Potentials	1

### Insulation characteristics

Overvoltage category	III
Degree of pollution	3

### Electrical properties

Rated surge voltage	8 kV
Maximum power dissipation for nominal condition	4.06 W

### Connection data

Number of connections per level	2
Nominal cross section	35 mm <sup>2</sup>

### Level 1 above 1 below 1

Screw thread	M6
Tightening torque	3.2 ... 3.7 Nm
Stripping length	16 mm
Connection in acc. with standard	IEC 60947-7-1
Conductor cross section solid	10 mm <sup>2</sup> ... 35 mm <sup>2</sup>
Cross section AWG	8 ... 2
Conductor cross section flexible	10 mm <sup>2</sup> ... 35 mm <sup>2</sup>
Conductor cross section, flexible [AWG]	8 ... 2
Flexible conductor cross section flexible (ferrule, w/o plastic sleeve)	10 mm <sup>2</sup> ... 35 mm <sup>2</sup>
Flexible conductor cross section (ferrule with plastic sleeve)	10 mm <sup>2</sup> ... 35 mm <sup>2</sup>
2 conductors with same cross section, solid	6 mm <sup>2</sup> ... 16 mm <sup>2</sup>
2 conductors with same cross section, flexible	6 mm <sup>2</sup> ... 10 mm <sup>2</sup>
2 conductors with same cross section, flexible, with ferrule without plastic sleeve	6 mm <sup>2</sup> ... 10 mm <sup>2</sup>
2 conductors with the same cross section, flexible, with TWIN ferrule with plastic sleeve	6 mm <sup>2</sup> ... 10 mm <sup>2</sup>
Nominal current	125 A
Maximum load current	125 A
Nominal voltage	1000 V
Nominal cross section	35 mm <sup>2</sup>

### Dimensions

Width	16 mm
Height NS 35/15	69.5 mm

# Feed-through terminal block - UK 35 N



3074130

<https://www.phoenixcontact.com/in/products/3074130>

Height NS 35/7,5	62 mm
Height	2.441 "
Length	54.5 mm

## Material specifications

Color	gray
Flammability rating according to UL 94	V0
Insulating material group	I
Insulating material	PA
Static insulating material application in cold	-60 °C
Temperature index of insulation material (DIN EN 60216-1 (VDE 0304-21))	130 °C
Relative insulation material temperature index (Elec., UL 746 B)	130 °C
Fire protection for rail vehicles (DIN EN 45545-2) R22	HL 1 - HL 3
Fire protection for rail vehicles (DIN EN 45545-2) R23	HL 1 - HL 3
Fire protection for rail vehicles (DIN EN 45545-2) R24	HL 1 - HL 3
Fire protection for rail vehicles (DIN EN 45545-2) R26	HL 1 - HL 3
Calorimetric heat release NFPA 130 (ASTM E 1354)	28 MJ/kg
Surface flammability NFPA 130 (ASTM E 162)	passed
Specific optical density of smoke NFPA 130 (ASTM E 662)	passed
Smoke gas toxicity NFPA 130 (SMP 800C)	passed

## Electrical tests

### Surge voltage test

Result	Test passed
--------	-------------

### Temperature-rise test

Requirement temperature-rise test	Increase in temperature $\leq 45$ K
Result	Test passed

### Power-frequency withstand voltage

Test voltage setpoint	2.2 kV
Result	Test passed

## Mechanical properties

### Mechanical data

Open side panel	No
-----------------	----

## Mechanical tests

### Mechanical strength

Result	Test passed
--------	-------------

### Attachment on the carrier

DIN rail/fixing support	NS 35
Test force setpoint	10 N

# Feed-through terminal block - UK 35 N



3074130

<https://www.phoenixcontact.com/in/products/3074130>

Result	Test passed
Test for conductor damage and slackening	
Rotation speed	10 (+/- 2) rpm
Revolutions	135
Conductor cross section/weight	10 mm <sup>2</sup> / 2 kg
	35 mm <sup>2</sup> / 6.8 kg
Result	Test passed

## Environmental and real-life conditions

### Needle-flame test

Time of exposure	30 s
Result	Test passed

### Ambient conditions

Ambient temperature (operation)	-60 °C ... 105 °C (max. short-term operating temperature RTI Elec.)
Ambient temperature (storage/transport)	-25 °C ... 60 °C (for a short time, not exceeding 24 h, -60 °C to +70 °C)
Ambient temperature (assembly)	-5 °C ... 70 °C
Ambient temperature (actuation)	-5 °C ... 70 °C
Permissible humidity (storage/transport)	30 % ... 70 %

## Standards and regulations

Connection in acc. with standard	IEC 60947-7-1
----------------------------------	---------------

## Mounting

Mounting type	NS 35/7,5
	NS 35/15

# Feed-through terminal block - UK 35 N



3074130

<https://www.phoenixcontact.com/in/products/3074130>

## Drawings

Circuit diagram



# Feed-through terminal block - UK 35 N



3074130

<https://www.phoenixcontact.com/in/products/3074130>

## Approvals

EAC

cULus Recognized	Nominal Voltage $U_N$	Nominal Current $I_N$	Cross Section AWG	Cross Section $mm^2$
Use group B	600 V	115 A	8 - 2	-
Use group C	600 V	115 A	8 - 2	-
Use group F	1000 V	115 A	8 - 2	-

EAC

# Feed-through terminal block - UK 35 N



3074130

<https://www.phoenixcontact.com/in/products/3074130>

## Classifications

### ECLASS

ECLASS-10.0.1	27141120
ECLASS-9.0	27141120
ECLASS-11.0	27141120

### ETIM

ETIM 6.0	EC000897
----------	----------

### UNSPSC

UNSPSC 19.0	39121410
UNSPSC 20.0	39121410
UNSPSC 21.0	39121410



# Feed-through terminal block - UK 35 N



3074130

<https://www.phoenixcontact.com/in/products/3074130>

## Environmental Product Compliance

China RoHS	Environmentally friendly use period: unlimited = EFUP-e
	No hazardous substances above threshold values

# Feed-through terminal block - UK 35 N

3074130

<https://www.phoenixcontact.com/in/products/3074130>

## Accessories

 Note: Applying some accessories below might limit this product.

### Screwdriver

Screwdriver - SZS 1,0X6,5 VDE - 1205079



Screwdriver, slot-headed, VDE insulated, size: 1.0 x 6.5 x 150 mm, 2-component grip, with non-slip grip

### Cover profile

Cover profile - AP 3 CM - 5022876



Cover profile for covering terminal strips, snaps onto AP 3-TU, AP 3-TNS 35 cover profile carriers, can be labeled with AP-ES insert strip. A cover profile carrier is to be positioned at the ends and at intervals of around approx. 40 cm. Supply length: As per customer order

# Feed-through terminal block - UK 35 N

3074130


<https://www.phoenixcontact.com/in/products/3074130>

## Switching jumper

Switching jumper - SBH 2-15 - 0205232



Switching jumper, pitch: 15 mm, color: silver

 Max. current carrying capacity: 120 A

---

## Fixed bridge

Fixed bridge - FBI 2-15 - 0201333



Fixed bridge, pitch: 15 mm, color: silver

# Feed-through terminal block - UK 35 N

3074130

<https://www.phoenixcontact.com/in/products/3074130>

## Zack marker strip

Zack marker strip - ZB 16:UNPRINTED - 0827461



Zack marker strip, Strip, white, unlabeled, can be labeled with: PLOTMARK, CMS-P1-PLOTTER, mounting type: snap in, for terminal block width: 16 mm, lettering field size: 16 x 10.5 mm, Number of individual labels: 50

---

## Zack marker strip

Zack marker strip - ZB 16 CUS - 0827463



Zack marker strip, can be ordered: Strip, white, labeled according to customer specifications, mounting type: snap into tall marker groove, for terminal block width: 16 mm, lettering field size: 10.5 x 16 mm, Number of individual labels: 5

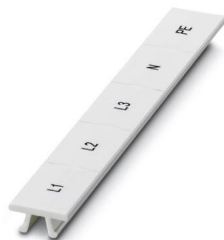
# Feed-through terminal block - UK 35 N

3074130

<https://www.phoenixcontact.com/in/products/3074130>

## Zack marker strip

Zack marker strip - ZB 16,LGS:L1-N,PE - 0827462



Zack marker strip, Strip, white, labeled, printed horizontally: L1, L2, L3, N, PE, mounting type: snap into tall marker groove, for terminal block width: 16.3 mm, lettering field size: 10.5 x 16.25 mm, Number of individual labels: 5

---

## DIN rail perforated

DIN rail perforated - NS 35/ 7,5 PERF 2000MM - 0801733



DIN rail perforated, acc. to EN 60715, material: Steel, galvanized, passivated with a thick layer, Standard profile, color: silver, Pack of 25 (50 m)

# Feed-through terminal block - UK 35 N

3074130

<https://www.phoenixcontact.com/in/products/3074130>



DIN rail perforated

DIN rail perforated - NS 35/ 7,5 WH PERF 2000MM - 1204119



DIN rail perforated, acc. to EN 60715, material: Steel, Galvanized, white passivated, Standard profile, color: silver, Pack of 25 (50 m)

DIN rail perforated

DIN rail perforated - NS 35/ 7,5 ZN PERF 2000MM - 1206421



DIN rail perforated, acc. to EN 60715, material: Steel, galvanized, Standard profile, color: silver, Pack of 25 (50 m)

# Feed-through terminal block - UK 35 N

3074130

<https://www.phoenixcontact.com/in/products/3074130>

## DIN rail perforated

DIN rail perforated - NS 35/15 PERF 2000MM - 1201730



DIN rail perforated, similar to EN 60715, material: Steel, galvanized, passivated with a thick layer, Standard profile, color: silver, Pack of 25 (50 m)

---

## DIN rail perforated

DIN rail perforated - NS 35/15 WH PERF 2000MM - 0806602



DIN rail perforated, similar to EN 60715, material: Steel, Galvanized, white passivated, Standard profile, color: silver, Pack of 25 (50 m)

# Feed-through terminal block - UK 35 N

3074130

<https://www.phoenixcontact.com/in/products/3074130>



DIN rail perforated

DIN rail perforated - NS 35/15 ZN PERF 2000MM - 1206599

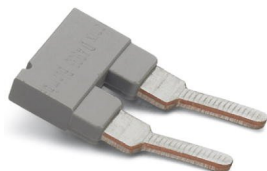


DIN rail perforated, similar to EN 60715, material: Steel, galvanized, Standard profile, color: silver, Pack of 25 (50 m)

---

Insertion bridge

Insertion bridge - EB 2-15 - 0203166



Insertion bridge, pitch: 15.25 mm, color: gray

 Max. current carrying capacity: 76 A



# Feed-through terminal block - UK 35 N

3074130

<https://www.phoenixcontact.com/in/products/3074130>

## Cover

Cover - AP 3-TNS 35 - 5022672



Sealable cover profile, for mounting on NS 35/7.5 DIN rail and for fixing the cover profile AP 3, with plastic knurled nut M5, space requirement: 13 mm

---

## End clamp

End clamp - E/UK - 1201442



End clamp, material: PA, color: gray, Mounting on a DIN rail NS 32 or NS 35

# Feed-through terminal block - UK 35 N

3074130

<https://www.phoenixcontact.com/in/products/3074130>

## End clamp

End clamp - E/UK 1 - 1201413



End clamps, for supporting the ends of double-level and three-level terminal blocks, width: 10 mm, color: gray

---

## End clamp

End clamp - CLIPFIX 35 - 3022218



Quick mounting end clamp for NS 35/7,5 DIN rail or NS 35/15 DIN rail, with marking option, width: 9.5 mm, color: gray

# Feed-through terminal block - UK 35 N

3074130

<https://www.phoenixcontact.com/in/products/3074130>

## End clamp

End clamp - CLIPFIX 35-5 - 3022276

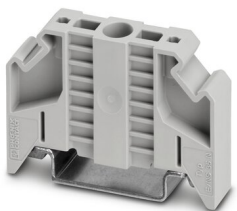


Quick mounting end clamp for NS 35/7,5 DIN rail or NS 35/15 DIN rail, with marking option, with parking option for FBS...5, FBS...6, KSS 5, KSS 6, width: 5.15 mm, color: gray

---

## End clamp

End clamp - E/NS 35 N - 0800886



End clamp, width: 9.5 mm, color: gray

# Feed-through terminal block - UK 35 N

3074130

<https://www.phoenixcontact.com/in/products/3074130>



## Insulating sleeve

Insulating sleeve - PS-IH WH - 0311566



Insulating sleeve, color: white

---

## Insulating sleeve

Insulating sleeve - PS-IH RD - 0311579



Insulating sleeve, color: red

# Feed-through terminal block - UK 35 N

3074130

<https://www.phoenixcontact.com/in/products/3074130>



## Insulating sleeve

Insulating sleeve - PS-IH BU - 0311582



Insulating sleeve, color: blue

---

## Insulating sleeve

Insulating sleeve - PS-IH YE - 0311595



Insulating sleeve, color: yellow

# Feed-through terminal block - UK 35 N

3074130

<https://www.phoenixcontact.com/in/products/3074130>



## Insulating sleeve

Insulating sleeve - PS-IH GN - 0311605



Insulating sleeve, color: green

---

## Insulating sleeve

Insulating sleeve - PS-IH GY - 0311621



Insulating sleeve, color: gray

# Feed-through terminal block - UK 35 N

3074130

<https://www.phoenixcontact.com/in/products/3074130>



## Insulating sleeve

Insulating sleeve - PS-IH BK - 0311634



Insulating sleeve, color: black

---

## Insulating sleeve

Insulating sleeve - PS-IH VT - 0311618



Insulating sleeve, color: violet

# Feed-through terminal block - UK 35 N

3074130

<https://www.phoenixcontact.com/in/products/3074130>

## End cap

End cap - NS 35/ 7,5 CAP - 1206560

DIN rail end piece, for DIN rail NS 35/7.5



## End cap

End cap - NS 35/15 CAP - 1206573

DIN rail end piece, for DIN rail NS 35/15





# Feed-through terminal block - UK 35 N

3074130

<https://www.phoenixcontact.com/in/products/3074130>



DIN rail, unperforated

DIN rail, unperforated - NS 35/ 7,5 UNPERF 2000MM - 0801681



DIN rail, unperforated, acc. to EN 60715, material: Steel, galvanized, passivated with a thick layer, Standard profile, color: silver, Pack of 25 (50 m)

DIN rail, unperforated

DIN rail, unperforated - NS 35/ 7,5 WH UNPERF 2000MM-VPE 10 - 1204122



DIN rail, unperforated, acc. to EN 60715, material: Steel, Galvanized, white passivated, Standard profile, color: silver, Pack of 25 (50 m)

# Feed-through terminal block - UK 35 N

3074130

<https://www.phoenixcontact.com/in/products/3074130>



DIN rail, unperforated

DIN rail, unperforated - NS 35/ 7,5 AL UNPERF 2000MM - 0801704



DIN rail, unperforated, acc. to EN 60715, material: Aluminum, uncoated, Standard profile, color: silver, Pack of 25 (50 m)

DIN rail, unperforated

DIN rail, unperforated - NS 35/ 7,5 ZN UNPERF 2000MM - 1206434



DIN rail, unperforated, acc. to EN 60715, material: Steel, galvanized, Standard profile, color: silver, Pack of 25 (50 m)

# Feed-through terminal block - UK 35 N

3074130

<https://www.phoenixcontact.com/in/products/3074130>



DIN rail, unperforated

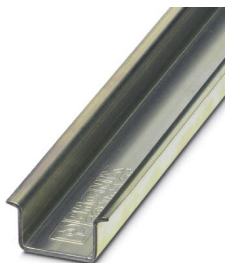
DIN rail, unperforated - NS 35/ 7,5 CU UNPERF 2000MM-VPE 10 - 0801762



DIN rail, unperforated, acc. to EN 60715, material: Copper, uncoated, Standard profile, color: copper-colored, Pack of 10 (20 m)

DIN rail, unperforated

DIN rail, unperforated - NS 35/15 UNPERF 2000MM - 1201714



DIN rail, unperforated, similar to EN 60715, material: Steel, galvanized, passivated with a thick layer, Standard profile, color: silver, Pack of 25 (50 m)

# Feed-through terminal block - UK 35 N

3074130

<https://www.phoenixcontact.com/in/products/3074130>

DIN rail, unperforated

DIN rail, unperforated - NS 35/15 WH UNPERF 2000MM-VPE 10 - 1204135



DIN rail, unperforated, similar to EN 60715, material: Steel, Galvanized, white passivated, Standard profile, color: silver, Pack of 10 (20 m)

---

DIN rail, unperforated

DIN rail, unperforated - NS 35/15 AL UNPERF 2000MM - 1201756



DIN rail, unperforated, similar to EN 60715, material: Aluminum, uncoated, Standard profile, color: silver

# Feed-through terminal block - UK 35 N

3074130

<https://www.phoenixcontact.com/in/products/3074130>



DIN rail, unperforated

DIN rail, unperforated - NS 35/15 ZN UNPERF 2000MM - 1206586



DIN rail, unperforated, similar to EN 60715, material: Steel, galvanized, Standard profile, color: silver, Pack of 25 (50 m)

DIN rail, unperforated

DIN rail, unperforated - NS 35/15 CU UNPERF 2000MM-VPE 10 - 1201895



DIN rail, unperforated, similar to EN 60715, material: Copper, uncoated, Standard profile, color: copper-colored, Pack of 10 (20 m)

# Feed-through terminal block - UK 35 N

3074130

<https://www.phoenixcontact.com/in/products/3074130>



DIN rail, unperforated

DIN rail, unperforated - NS 35/15-2,3 UNPERF 2000MM-VPE 10 - 1201798



DIN rail, unperforated, acc. to EN 60715, material: Steel, galvanized, passivated with a thick layer, Standard profile 2.3 mm, color: silver, Pack of 10 (20 m)

---

Female test connector

Female test connector - PSB 6/5/6 - 0205290



Female test connector, color: silver

# Feed-through terminal block - UK 35 N

3074130

<https://www.phoenixcontact.com/in/products/3074130>



## Test plugs

Test plugs - PS-MT - 0311647



Test plugs, color: silver

---

## Marker for terminal blocks

Marker for terminal blocks - UC-TM 16 - 0819217



Marker for terminal blocks, Sheet, white, unlabeled, can be labeled with: BLUEMARK ID COLOR, BLUEMARK ID, BLUEMARK CLED, PLOTMARK, CMS-P1-PLOTTER, mounting type: snap in, for terminal block width: 16 mm, lettering field size: 15.45 x 10.5 mm, Number of individual labels: 32

# Feed-through terminal block - UK 35 N

3074130

<https://www.phoenixcontact.com/in/products/3074130>

## Marker for terminal blocks

Marker for terminal blocks - UC-TM 16 CUS - 0824621



Marker for terminal blocks, can be ordered: by sheet, white, labeled according to customer specifications, mounting type: snap into tall marker groove, for terminal block width: 16 mm, lettering field size: 15.45 x 10.5 mm, Number of individual labels: 32

---

## Marker for terminal blocks

Marker for terminal blocks - UCT-TM 16 - 0829146



Marker for terminal blocks, Sheet, white, unlabeled, can be labeled with: TOPMARK NEO, TOPMARK LASER, BLUEMARK ID COLOR, BLUEMARK ID, BLUEMARK CLED, THERMOMARK PRIME, THERMOMARK CARD 2.0, THERMOMARK CARD, mounting type: snap in, for terminal block width: 16 mm, lettering field size: 14.8 x 9.6 mm, Number of individual labels: 18



# Feed-through terminal block - UK 35 N



3074130

<https://www.phoenixcontact.com/in/products/3074130>

## Marker for terminal blocks

Marker for terminal blocks - UCT-TM 16 CUS - 0829637

Marker for terminal blocks, can be ordered: by sheet, white, labeled according to customer specifications, mounting type: snap into tall marker groove, for terminal block width: 16 mm, lettering field size: 14.8 x 9.6 mm, Number of individual labels: 18



---

Phoenix Contact 2022 © - all rights reserved  
<https://www.phoenixcontact.com>

PHOENIX CONTACT (I) Pvt. Ltd.  
A-58/2, Okhla Industrial Area, Phase - II, New Delhi-110 020

+91.1275.71420  
[info@phoenixcontact.co.in](mailto:info@phoenixcontact.co.in)

单击下面可查看定价，库存，交付和生命周期等信息

[>>Phoenix Contact \(菲尼克斯\)](#)